

Charles H. Enloe

Born in Wichita Falls, Texas June 18, 1920

Served in the Air Force during World War II

Education:

Graduate of Wichita Falls High School in 1938

Bachelor of Music Education from Southern Methodist University

Master of Music Education from VanderCook College of Music in Chicago

Supervisor's Certificate from Texas Women's University in Denton

Experience

Before retiring, thirty-three as band or choral director, or in a supervisory capacity at the following:

Mexia High School

Nederland High School

Lamar College, Beaumont - Instructor of Trombone

Seymour High School

Monahans High School

Rider High School, Wichita Falls

Wichita Falls Public Schools - Supervisor of the Band Programs

Wichita Falls All City Band Director

Presently serving as Supervisor of Music Student Teachers at

Midwestern State University in Wichita Falls

Member of the Following Organizations

Blue Key Fraternity

Phi Mu Alpha Sinfonai

Phi Beta Mu Fraternity

Pi Kappa Lambda Honorary Fraternity

American School Band Masters Association

Music Educators National Conference

Texas Music Educators Association

Texas Bandmasters Association

Texas Music Adjudators Association - Charter member, having judged
marching, concert bands, solo, solo and ensembles, sight reading,
in Texas, Oklahoma, Louisiana, and New Mexico

Have served as:

Region and Contest Chairman

State Textbook Committee for Orchestra and Band

State Handbook for concert and Sight Reading for Judges and Directors

Panels to select outstanding bands for TMEA

Panels to select All State Musicians for Band and Orchestra

Taught at Lamar College Band School - three years

Taught at Midwestern Band School - thirty years, teaching trombone, as well
as other instruments, including the Honor Band, Directors' Band, and

Directors' course for credit

+ Clinician for area bands in Texas and Oklahoma, District and Region Bands

Some Accomplishments

Selected as Outstanding Music Student - SMU - 1947
Of all UIL Band Contest Ratings - most were first divisions and the
remaining were second divisions
First Divisions at Del Mar Music Festival in Corpus Christi
Selected as Outstanding band at Jacksboro, Castleberry, Thomas Jefferson
Music Festival in Dallas, and Bowie Marching Festival
Rider High School Band performed at the Cotton Bowl in 1968

The satisfaction of teaching and performing good music and realizing
that the students not only will understand and appreciate good music,
but have become better citizens through participating in band is most
rewarding.

Have played trombone or bassoon with the following:

Wichita Falls Municipal Band - 1930 played trombone at the age of 11
Played with an orchestra at Grant Street Methodist Church in the 30's
College marching, symphonic bands and orchestras
American Legion Band in Dallas
Professional Show and Dance Groups
Dallas Union Concert Band
Beaumont Symphony Orchestra (Charter Member)
Wichita Falls Symphony Orchestra
First All-Texas Bandmasters Band

Am I Ethical in My Profession?

By CHARLES H. ENLOE

Director of Bands
Rider High School
Wichita Falls, Texas

Directors of musical organizations have an awesome responsibility. The individual and group attitudes in such organizations so reflect the director's point of view that he, as a teacher, must do the very best teaching possible as well as mold the temperament of the group. He is striving to present music as an artistic experience — an expression of beauty, an outflowing of creative spirit uncluttered by selfish motives and considerations. To do this, he must establish for the group a code of ethics that will emphasize high moral, mental, and spiritual values. Before this is possible he must ask himself, "Am I ethical in my profession?"

First, he must ask himself, "Am I ethical toward my students?" This involves two main aspects of behavior — the director's actions toward the students and their reactions triggered thereby. The welfare and growth of his pupils should be his foremost thought always. Each pupil should be treated with dignity as an individual, with respect for his talent as a joy unto himself and a vital contribution to the group, and with a self-sacrificing concern for leading and guiding him toward his full capacity of learning and achievement. Instead of the leader of the group thinking of his fame and standing being enhanced by an A-1 rating, he should think of the potential of each child. Sometimes this concern for the struggling individual can best be served by extra help so as not to mar the proficiency of the group which is important also to the individual. Usually this sincere thought for the students' best

interests will be reflected in the form of extra effort and cooperation on their part. In order to maintain a professional respect, or attitude with pupils, the director should refrain from too much familiarity, from such practices as allowing the students to address him by his first



Charles H. Enloe

name or his last name without title, from telling risque jokes or otherwise acting unprofessionally in the presence of his students. He should appear neat and well groomed if he wishes respect. He will be bound to treat confidential matters with strict

discretion. Students' problems should not be aired with other teachers, parents, or students. Gossip, especially, should be avoided. These practices will tend to evoke similar behavior on the part of the students.

The director's second consideration is his ethics toward his administration. He should never make plans for a trip and discuss them with the members of the organization before gaining approval from the administration. He must be willing to give and take with the other programs of the school. He and his students must bear in mind that they are not the only group to be considered. Certainly he should be as convincing as possible in trying to gain his

About the Author

Charles H. Enloe, director of the S. H. Rider High School Band, Wichita Falls, Texas, holds a Bachelor of Music Degree from Southern Methodist University, and a Master's in Music from the VanderCook College of Music in Chicago. He is beginning his seventeenth year of teaching in the public schools of Texas. Mr. Enloe is a member of the Texas Music Educators Association, Texas Bandmasters Association, American School Band Directors Association, as well as the Texas State Teachers Association and the National Educators Association. He is a life member of Phi Mu Alpha, as well as a member of Phi Beta Mu, Phi Kappa Lambda, and the Blue Key.

objective; but whatever the outcome, he should not criticize and complain to other people. His principal needs to be informed of all plans throughout the year if he wishes to maintain a spirit of cooperation and harmony.

Along with proper relations toward the administration comes the director's behavior toward the other faculty members. With a little humility and a lot of tact, he can do much to appease the slight feeling of envy sometimes held by teachers of "non-glamorous" subjects toward groups which catch the eye of the public so frequently. Again, it is the director's concern for the individual pupil that must show through the surface. He, like teachers of other subjects, is dedicated to the betterment of the whole child. He must be willing to participate in all faculty meetings and activities staged by other teachers. He must be willing to use his musical organization to assist where needed in programs under the leadership of others. In this area also, gossip should be avoided at all costs. If praise cannot be given, nothing should be said. The director should never give the impression that his practices and activities are so much more important than any other school activity that they take precedence over everything else. Certainly the student must choose those organizations he will wholeheartedly support, but often a bit of cooperation among faculty sponsors can produce more proficient groups on campus than otherwise possible. Certainly, the musical director should be a part of the faculty instead of apart from it.

Since this is true, he must be ethical to other directors, in his own school and in others. This involves being helpful when assistance or advice is needed, being slow to criticize, being quick to learn from others so that standards for the entire profession are raised. There are three general eras to which these points should be applied: toward the past and future, as well as in the present. The director should work with self-confidence, secure in the knowledge of his own skill, to build a feeling of permanency in the group; however, he should not convey the impression that he is inexpendable and that his creations are super superior. This will not build desirable group relationships in the present, nor will it foster success or harmony for future workers with the group. No criticism of past leadership should be allowed. Naturally, changes are made from time to time in policy

and personnel, but they should be calmly accepted and absorbed and built into progress for all concerned. Sarcasm or belittling of the work of other directors in the presence of his students is unforgivable. Criticism of other members of the profession to administrators, co-workers, or parents is out of the question. Competition among organizations and directors can be stimulating, invigorating, and commendable if it is kept free of petty jealousies and criticism which tends to alienate and destroy rather than edify the profession and its members.

The director also owes the parents of his students ethical consideration. Courtesy is the keynote of this behavior. This means taking the time to inform them of all details necessary to convey the feeling that they are a part of the organization's functions. If he expects the parents to contribute time, money, and other assistance toward maintaining a group spirit and good morale, then he should be prompt to inform them of necessary details. Because of undesirable meddling and criticism by some parents, teachers sometimes are prone to think everything would work out better if parents stayed out of the picture altogether. Rarely, however, do teachers who are also parents expound this idea. Even though the teacher and parent have different and separate areas of responsibility, they are both concerned for the welfare of the child. At all times it should be remembered that the school, including all its groups, exists for the benefit of the pupils, not the teachers or the parents. However, this does not suggest a program of dotting compliance with insincere whims and prejudices of any of the three groups, but an adherence to practices and principles that have proved their usefulness in producing good students and citizens. With this philosophy as a guideline, parental help can be utilized in those proper areas where it is needed, and therefore the director is left free to carry on the professional processes of teaching for which he is trained.

In the musically-trained person's attempt to keep his subject aesthetic and his conduct above reproach, he sees an obligation to his school and community. Because of their support, the organization can give expression of its artistry and reciprocate with service when needed.

Last of all, the musical director needs to be ethical with himself. Integrity holds a high value in his position as it does in that of most people. How can a band director, for

instance, maintain permanent gain for himself or his students when he acquires sight reading material early and rehearses his band with this "non-available" information? Sooner or later the truth is discovered, his reputation is damaged, and his pupils' ability remains undiscovered. What does he gain for himself or his pupils when he grumbles about not earning a first division at contest? By graciously accepting judges' decisions as fair and honest, the director can teach a valuable concept of life to his students. He can use lower ratings as a stimulus to work harder in order to reach the top. Humility can even prevent him and his students from becoming overconfident after winning many superior ratings. Personal gain alone can never be a satisfactory remuneration for successful teaching. Only when the director feels the need of giving all his time and effort toward raising his profession and helping students in the process can he win and maintain the honor and respect of his students and community and, consequently, feel that what he is doing is worthwhile. Anything less than his best falls short of this goal.

Thus, when the musical director has kept his own house in order by adequate training and proper ethical behavior on his part, he has in turn influenced his environmental groups to observe good ethics toward him and other related groups. Such an interrelated improvement of ethics in our profession should make it easier to convince more people of the need to teach music and other arts along with mathematics and science, which are thought by some to be so vital to our very survival as to exclude all study of art. We are concerned with developing a moral, beautiful, and aesthetic understanding in the students' minds in addition to their knowledge of more technical, practical matters. Where can we better start than with our own ethics?

THE END

Keep your fears to yourself, but share your courage with others. . . .
Robert Louis Stevenson.

Good judgment is often acquired from bad experience.

**Do you have a pet
subject in Music**

Education? Send it

to us as a feature article

Charles H. Enloe was born June 18, 1920 in Wichita Falls, Texas.

He started taking trombone lessons from Paul Seeds when he was about eleven years old. Mr. Seeds was the director of the Texans - a community band made of all ages. They entered contests, attended the Texas Centennial, etc.

Charles played in the Grant Street Methodist Church under the direction of Mr. Seeds.

He started playing in a dance band when about 14 and still plays a dance job occasionally.

Graduated from Wichita Falls High School in 1938. Lettered in track during his senior year.

Entered SMU. Joined the Army Air Force in January of 1942. Went to England and then to North Africa. Found a beat old cornet and played with a group. From there to Italy and found a beat up trombone and played with a group.

Was discharged from the service in July of 1945 and entered SMU in the fall.

Taught in one of the elementary schools in Highland Park in Dallas for his student teaching. Even got paid for it. Earl Ray was his supervising teacher.

Taught at Mexia, Nederland, Seymour, Monahans, back to Seymour and then to Rider High School. Helped the band in Seymour when they would be without a director at the beginning of school. In the year 1985-86 he was their high school band director.

In 1986-87 he played with the Midwestern State University band and even went on tour with them in the spring of 1987.

He works with the band directors in Iowa Park and is the supervising teacher at MSU for the music students who are doing their student teaching.

Musical first due Tuesday

A first in Wichita Falls public school music presentations will take place Tuesday at 7:30 p.m. in Memorial Auditorium when the All-City High School Orchestra and Band will be presented in concert.

These two musical organizations draw their highly selective membership from Hirschi, Wichita Falls and Rider High School musical organizations.

The All-City Orchestra was formed seven years ago and the All-City Band is in its second year. Richard Affannato, directs the orchestra and Charles Enloe is director of the band.

Tickets for the concert are on sale at Max Kreutz House of Music, Averitt Music Company, and Tom McCarty Music Company. All the orchestra and band members also have tickets and tickets will be available at the door Tuesday.

The orchestra program will include "Russian Sailor's Dance, Gliere; "Finlandia," Sibelius; "That's Entertainment," Polyster and "Vignettes," Kirk.

The band will play two selections from Rimsky-Korsakov's "Scheherazade," "The Sea and Sinbad's Ship" and "The Story of the Kalandar." They also will be heard in special arrangements of "Moon River" and Hello, Dolly" and will close the program with "Crown Imperial March," Walton.

Directors of the Wichita Falls orchestra program are David Holcomb, Cynthia Compton, Benny Spencer, Duncan Beaver and Helen Cunningham. Band program directors are Mike Humphrey, Bill Parks, Ron Means, Bill Smith, Elton Milford, Poney Thompson, Dee Tucker, Buddy Richardson, James Wickersham, Gerald Tilford and Ken Tritton.



Review

All-City Band Concert Fine

By LISA WARMAN
Special Writer

I was amazed and delighted, to say the least. But the Wichita Falls public schools' All-City (High) School Band concert began on a good "note," so I should have realized I wasn't in for a second-rate performance.

And second-rate it was not. The concert began three minutes early before a crowd of about 300.

The first selection was "His Honor March" by Fillmore. The treble wind instruments and horns were the best sections of the band, and the percussion was barely mediocre.

But their only trouble was that they weren't warmed up yet. They were 100 percent improved by the third selection.

The second was a medley by Mancini including "Moon River," "Breakfast At Tiffany's," "Baby Elephant Walk" and "Hatari."

It was the tubas that fell down on this charming medley of syncopation and enthusiasm. Most of the band was at its very best (better than many many professional bands I've had to listen to!) and love of the tunes showed in the playing.

The percussion was just outstanding on the "Poet and Peasant Overture" by V. Suppe.

This has always been an hysterically funny musical piece to me. And this one nearly made me laugh out loud — through such good execution and excellent direction by Dr. Joe Haddon, director emeritus of Midwestern State

The only thing commendable to me about "Americans We March" by Fillmore was that the percussion was very good, and the pauses were executed to perfection by every single member of the band — and they were used to greatest advantage on this high piece. It was just

played in much too subdued a manner for such a lively march.

There were simply no words to describe the yumminess of the next selection, "Alto Mood," by Bunton.

But I honestly could not comment on the band here — I never heard it because saxophone soloist Norval Crews of Midwestern State University stole the whole act. I have never heard such a marvelously smooth saxophone player — either amateur or professional!

"Selections from 'The Wiz'" by Smalls was another medley the band was really "in tune" with.

The percussion, horns and all-band syncopation were fun for the band and the audience alike.

And then the band played "Macarena" by Monterde. This was the tubas' best song, by far, and the piece was beautiful, despite the rest of the band. They were a little out of sync and tune.

The final arrangement by Wichita Falls High School Director James Wickersham brought more cheers from the audience — by far — than any of the other selections.

And why not? It was a medley of each of the schools' theme songs. A delightful piece. A delightful concert! And excellent direction by Charles Enloe.



Arts On Record Youth Concert Worthwhile Show

By **MARTHA STEIMEL**
Arts Editor

Let's hope the concert presented Tuesday night by the All-City Youth Orchestra and the All-City Band is the first in a series of annual events.

It is worthwhile to hear and see a bunch of highly talented high school instrumentalists perform on a stage such as Memorial Auditorium offers. The students in these two musical organizations are selected as members. They rehearse after regular school hours and, when they have an opportunity to perform, they give their all.

Richard Affannato conducts the orchestra and Charles Enloe directs band, each with a membership including representatives of all city high schools.

The concert Tuesday was a short one and, for band and orchestra alike, covered a fairly wide spectrum. The orchestra played "Finlandia," the Sibelius composition that is perhaps more familiar than any other of the Finnish composer's works. They also presented a lively "Russian Sailor's Dance" and "Vignettes," by Kirk, a composition in three movements, each with a distinct flavor. I liked the lilting third one best.

The orchestra ended the first half of the concert with a slick arrangement of familiar show tunes such as "San Francisco," "Be My Love" and "Singin' In The Rain."

The band opened its segment with Part I and Part II of the sinuous and sensuous

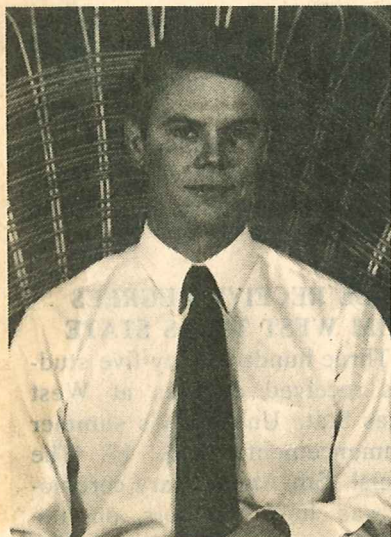
"Scheherazade," by Rimsky-Korsakov. This music also is familiar and was most appreciated by the audience. "Moon River," — yes, THAT "Moon River" — a medley of music from "Hello, Dolly" and a most melodic march, "Crown Imperial March" by Walton, were also on the band's program. I like to hear a band play a march, and this one was singularly appropriate for a concert such as this.

Both the conductors and the participating students are to be congratulated on this concert. It is the sort of thing that needs to be done as often as is practical because it gives the musicians a chance to perform in a more formal setting than usual for high school students and because the audience gets a break, sitting in comfortable seats rather than on bleachers. No matter how accomplished a band or orchestra is, it can't sound its best in a gymnasium.

The personnel of the band and orchestra are auditioned for membership. It is the orchestra's ninth season and the band's second. Lots of the instrumentalists are the students most likely to go into music as a career, to get scholarships and the like.

It also was most gratifying to see some members of the Wichita Falls Symphony Orchestra board in the audience. Since WFSO is the sponsor of the youth orchestra, it was most appropriate that these officials hear the music.

Seven Teachers Employed By Seymour Schools



Randy McCord was employed as assistant secondary principal for the 1985-86 school year. Randy has been with the Seymour system for the past six years. He graduated from Iowa Park High School and has a MED degree from Midwestern State University. He and his wife Janey have three children, Craig, age 17, Emily, 8 and Jonathan 4.

Carol McCord was employed for the 1985-86 school year. She will be teaching in the elementary school. Carol graduated from Seymour High School and has a BS degree from North Texas State University. She is married to Mark McCord and they have three children, Kelly age 7, Marci, 6, and Whitney 3. Carol taught one year in Megargel, Tex.

Carol Jean McClung was em-

ployed for the 1985-86 school year. She will be teaching in the elementary school. Carol Jean graduated from Seymour High School and has a BS degree from North Texas State University. She is married to Roy L. McClung and they have three children, Trey age 23, Sara 21 and Gena 18. Carol Jean has 22 years of teaching experience, teaching last year in Goree, Tex., and previously in Omaha, NB., Morton, Tex., Plainview, Tex., and Bryan, Tex.

Karla Thornhill was employed for the 1985-86 school year. She will be teaching in the elementary school. Karla graduated from Seymour High School and has a BS degree from Midwestern State University. She is married to Bruce Thornhill and they have one daughter Kami, age one.

Connie Boatright was employed for 1985-86 school year. She will be teaching math at the secondary level. Connie graduated from Plainview High School and has a BS degree from Sul Ross State College. She has 10 years teaching experience in the Garland ISD. She and her husband Olen have three children, Kristi, age 13, Michael 11 and Jana 9.

Charles Enloe was employed as high school band director for the 1985-86 school year. Charles graduated from Wichita Falls High School and has a BM degree from Southern Methodist Univer-

sity and received his MME from Vandercook School of Music. Charles has been in the music business for several years of which seven of those have been with the Seymour ISD, thirteen with Rider High School in Wichita Falls and was Band Coordinator for Wichita Falls Schools for seven years. He and his wife Dorothy live in Wichita Falls.

Mack Bibb was employed as elementary and Junior high band director for the 1985-86 school year. Mack graduated from Seymour High School and has a MME from Texas Tech University. Mack has three years teaching experience, he was employed with Seymour ISD for one year and Lubbock Monterey two years. He and his wife Janey have two children, Bradley, age 6 and Brian 4.

Together with the events that make tonight a very special one, we wish to add a very special salute of a very special man. As a part of the faculty of Rider High School, this dedicated teacher has made himself and his students respected and admired in every part of our great state.

He has demonstrated by his very life the attributes that each of us admires. As a young man, a student at Wichita Falls High School, he was an outstanding athlete; as a member of the Army Air Corps he served his country well in Africa and in the invasion of Europe. As a teacher he has given unselfishly of himself and his great talents. As a musician he has enriched the lives of each of us who has been a part of his work.

Mr. Thompson, The Pride Of The Raiders Marching Band, and the Golden Gals salutes Mr. Charles Enloe, who after twelve years of close and affectionate association with Rider High School, leaves us to become Consultant of Bands for the entire school district. Let us acknowledge Mr. Enloe and his work at Rider with a final request from his students: Mr. Enloe, will you direct your Band in the School Alma Mater and the famous "Young Lions"

Thank you, Mr. Enloe. Your work will continue to keep you as a part of this High School which salutes you tonight.

November 14, 1975

R I D E R H I G H S C H O O L

Department Of Instrumental Music

Presents

In Concert

CONCERT BAND

Mr. Poney Thompson

Conductor

Sol Y Sombra George Gates

A Short Ballet For Awkard Dancers H. Hazelman
I. March For Two Left Feet

Third Suite R. E. Jager
III. Rondo

Chorale And Capriccio Giovannini

ENSEMBLE BAND

Mr. Charles Enloe

Conductor

Symphony No. 5 $\frac{1}{2}$ Don Gillis
1. Perpetual Emotion
2. Spiritual ?
3. Scherzofrenia

MacArthur Park Webb

The King and I Rodgers

Alla Barocco Giovannini
(Karen Vinson- Conducting)

Stars & Stripes Forever Sousa

*** FINALE ***

COMBINED BANDS

Mr. Charles Enloe

Conducting

Elsa's Procession To The Cathedral Wagner

May 27, 1976
7:30 p.m.

Raider
Field House

MARCHING BAND

The Pride of the Raiders Bands recently had a combined concert with the McNiel and Barwise Bands.

The 500 piece band played "The Music Man," directed by Mr. Bill Parks, director at McNiel. Mr. John Hail, director at Barwise, directed the band in a jazz number entitled "Close To You." Mr. Poney Thompson, assistant director for the Marching Band at Rider, directed the band in "Brighton Beach."

At this concert the 1976-77 Band Parent Officers were installed. The Band Parents presented Mr. Charles Enloe and Mrs. Enloe a plaque for his 12 years of dedication and devotion he has given to support the band.

Several members of the band will attend State Solo and Ensemble Contest in Austin May 29. Students entering the contest are Mark Cabaniss, Twuana McKee, Suzan Renton, Lisa Reece, Kathy Sorenson, Kathy Gallenberger and Cindy Beer.

Others include Cathy Clam-pitt, Ross Smead, Mike Cargal, Jerry Phelps, Sue Moss, Elizabeth Taylor, Len Moser, Becky Hennig, Kevin Nordman, Scott Wilcox, Melanie Donart, Nancy Cook and Connie Oakey.

The Stage Band recently entered the Midwestern State University Stage Band Festival and received an excellent rating. Kevin Austin, Mark Cabaniss, Mark Veigl and Scott Wilcox made the All-Star Stage Band.

Mark Cabaniss was named outstanding woodwind.

To celebrate Navy Day and to honor the Texas Bandmaster of the Year, Mr. Maurice McAdow, the S.H. Rider Band planned special ceremonies at one of the half time shows in October, 1973. As the assistant director, I learned that it was Charles Enloe's twenty-fifth year to teach. The students and I thought it would be great to plan a special tribute to Mr. Enloe. The problem was to get rid of Charlie long enough to teach the formation.

I tried to think what would it take to get Charlie away from the band. There were three options: 1. the Supervisor of Bands, Mr. Fred Prentice; 2. the principal, Mr. Leon Parrish; or 3. an angry parent. Since we had no angry parents, and Charlie normally talked with Mr. Prentice on the marching field, Mr. Parrish was the only answer. After talking with Mr. Parrish and letting him in on the secret, the plan was in action.

Friday, the day of the game came, and Charlie was nervous. He criticized the band even though they had made a 1st division the week before. I couldn't do anything right. Suddenly, an office assistant appeared with a note from Mr. Parrish. Charlie tried to put her off, but she was insistent. Mr. Parrish needed to see him NOW!

All the way to the building, Charlie was looking back over his shoulder to see if I was doing my job. As soon as he hit the doors of Rider, the students let me know and I passed out the new chart. To quote one of the students, "We learned this formation in five minutes."

When Charlie got back, we were working on the NAVY formation. Then we went through the whole show. The band went through its regular contest routine. Then it formed NAVY. From that, the band formed the traditional RHSR which then went to ROHO, which was then suppose to go to ENLOE. When we came to that part of the show, the students grinned at me, and went to the normal RHSR.

The night was crisp and clear. The show began as planned. When Charlie saw the new formation he was sitting down, then he stood; he thought the band was falling apart on such a special night. When he heard the script and realized what the formation was, he sat back down. We received three standing ovations that night. One for NAVY and Mr. McAdow, one for RHSR, and one for ENLOE. -- A special tribute for a special man.

Buddy Richardson

Buddy Richardson





COTTON BOWL-BOUND — S. H. Rider High School's 96 - piece Raider Band struts behind five majorettes and its drum major in a drill to sharpen it for an appearance in the downtown parade prior to, and halftime period during, the

New Year's Day Cotton Bowl classic in Dallas. The game will pit Texas A&M University and Alabama. The Rider band is directed by Charles Enloe. (Staff Photo by George Smiley)



11th ANNUAL COTTON BOWL FESTIVAL PARADE JAN 1 1968

Wichita Falls Record News

Wichita Falls, Texas (76307)

Your Morning Paper—The Latest News First To You

Ed Howard, 1928—1948

RHEA HOWARD

President and Publisher

JAMES B. BARNETT, Executive Vice President and Treasurer; WILLIAM L. DONNELL, Vice President;
KATHLEEN HOWARD, Vice President; CURTIS COOK, Managing Editor; GLENN SHELTON, Columnist

Editorials • Comment

The readers of the Wichita Falls Record News reflect many diverse opinions and viewpoints. Therefore the Wichita Falls Record News presents editorial page columnists whose opinions and viewpoints also are widely diverse. They do not necessarily represent those of the Record News itself. We reserve our own comment for the Editorials.

MONDAY MORNING, JANUARY 1, 1968

PAGE 8

Rider Band Recognized

The Wichita Falls Rider High School Band is to be congratulated for having been one of the four high school bands selected to play today at Dallas during the Cotton Bowl game. Members of the band left Saturday for Dallas and were guests at a party New Year's Eve at the State Fair grounds featuring Miss Teen-age America.

The group will play during the half time intermission and will march during the pre-game parade.

The selection of the Wichitans is a compliment to the school, the band members and their director. We are happy to see this recognition. In all our attention to football teams and other athletics, we sometimes overlook the hard work and skill that it takes to be a band member.

Such recognition as this is long overdue the organization and the school it represents.

Wichita Falls Record News
WICHITA FALLS, TEXAS
THURSDAY
MORNING
December 28, 1972
Page 7B

Rider Band Will Play At Inaugural

G. H. Kirby, superintendent of schools, said Wednesday the Rider High School band has accepted an invitation to participate in the Jan. 16 Inaugural Parade in Austin.

The band, under Charles Enloe, director, will play "Stars and Stripes Forever" and "Grandioso March" in the parade honoring Gov. Dolph Briscoe and Lt. Gov. Bill Hobby.

The band, which has received a first-place rating in the University Interscholastic League marching contest, will represent this geographical area of Texas.

Several adult sponsors are expected to accompany the some 150 musicians in the band on the trip to Austin.





Pride of the Raiders Marching Band
Rider High School, Wichita Falls, Texas
1971-72

On October 22, 1966, I was playing with the Wichita Falls Symphony Orchestra. Our guest artist was the well known soprano, Eileen Farrell. I left my wife, who was ten months pregnant, in the audience and went off to play my trumpet. The first act went well. We played Weber and Beethoven. The highlight of the program was to be the aria from Puccini's "MADAME BUTTERFLY" at the beginning of the second half of the program. I was playing 3rd trumpet which had a lot of measures rest for me to count.

I was sitting next to Charles Enloe, Rider Band Director and first trombonist. Anyone who has seen Charlie knows that he's tall and easy to spot in a crowd. We were on the top riser at the back which had no lip. Charlie, as he often does, got very involved in the music. He began to push his chair toward the back of the riser. Just as he began to play an important solo, he suddenly disappeared! I immediately climbed off the riser to see if he was hurt.

What I found was Charlie entangled in a chair, his trombone held high in the air and complaining he had hurt his elbow. As I climbed back up to play my five notes at the end of the piece, the conductor, William Boyer, mouthed, "Is he all right?" As I nodded yes, I suddenly realized the whole orchestra was looking at me. It's true -- musicians watch the conductor.

What I didn't know until later was that my wife thought Charlie had pulled me off with him and that the orchestra shell had parted and rocked dangerously over the orchestra. I realized now the normal reaction when you are falling backwards is to grab someone and if that had happened, the whole brass section might have disappeared. -- And Miss Farrell -- the pro that she is never batted an eye.

Buddy Richardson
Buddy Richardson

Symphony men bandmen too

Two men who live in Wichita Falls and one from Walters, Okla., are among principal instrumentalists in the Wichita Falls Symphony Orchestra.

Ron Mitchell of Walters is principal percussionist. He has been playing with WFSO for five years and is band director at Walters High School.

Charles Enloe, trombone, is band director at Rider High School. Enloe is one of the busiest musicians around. He came back to his home town from Seymour to take the baton at Rider 10 years ago. This year his musicians here gave him a plaque of appreciation for his work. Enloe also works on the staff of the Midwestern University band camp and has taught flute at other summer music sessions.

David Hale formerly was director-conductor of the Sheppard AFB band. He plays French horn, that instrument once described as appearing more suitable for the distilling of strong drink than making mellow music. Hale now is retired from SAFB and works in a downtown music store.



SYMPHONY LEADERS — Ron Mitchell, center, is principal percussion for the Wichita Falls Symphony Orchestra. Other principals shown are David Hale, left, horn; and Charles Enloe, right, trombone.

Band Wins First Place Rating in League Contest

The Seymour High School Band won a first place rating in marching competition and a first place in inspection at the Interscholastic League contest in Wichita Falls Tuesday night.

The band is under the direction of Charles Enloe, and in such contest preparations he is ably assisted by Mrs. Enloe. They report much hard work in getting ready for this event, and it paid off handsomely in the high ratings.

Twenty-six bands from this district entered the contest, which was judged by Mr. and Mrs. Bill Woodward.

In twirling contests nine local girls competed for ratings and seven were given a number one. They are: Nixie Bailles, Rosie Randal, Gloria Martin, Sandra Shaver, Lynda Moss, Emily Suttles and Kay Speck.

Shirley Hughes received a number two rating, and Jill Larson a number three.

The band has been putting on some excellent halftime performances at the Panther football games and will be seen again Friday night when the Panthers play Stamford here in Seymour.

Marching Contest Ratings Are Given

The Wichita Falls High School marching band received a first division rating in competition here Tuesday night.

Participating bands are rated one to five, according to their marching ability, within their own district divisions. Schools from B, A, AA, AAA and AAAA divisions participated in the Tuesday night event.

The contest as a whole was one of the best ever held, Coyote director Don Hatch said. The bands and their ratings are as follows: Reagan Junior High, Robert Taylor director, 2; Barwise Junior High, Harold Jackson director, 1; Zundelowitz Junior High, Thomas Taylor director, 3; Bowie Junior High, Ted Merritt director, 4; Archer City Junior High, Richard Perot director, 4; Jacksboro Junior High, W. B. Parks director, 3; Electra Junior High, Howard Smith director, 2; Graham Junior High, Jim Harrington director, 3;

Knox City High School, R. W. Scott director, 3; Henrietta High School, Howard Reeke director, 2; Munday High School, Jack Geyman director, 1; Crowell High School, Earl Hesse director, 3; Paducah High School, W. H. Adams director, 3; Archer City High School, Richard Perot director, 1; Iowa Park High School, D. L. Vaughn director, 2; Holliday High School, Bill Konecky director, 3; Olney High School, Gary Zook director, 2.

Nocona High School, Norman McDaniel director, 1; Jacksboro High School, W. B. Parks director, 3; Quanah High School, L. E. Gray, 3; Bowie High School, Ted Merritt director, 2; Burkburnett High School, James Wickersham director, 2; Seymour High School, Charles Enloe director, 1; Elec-

tra High School, Howard Smith director, 1; Graham High School, Lloyd Cook director, 1; Vernon High School, Louie Holder director, 1; Wichita Falls High School, Donald Hatch director, 1.

Baylor County Banner

SEYMOUR, BAYLOR COUNTY, TEXAS, THURSDAY, APRIL 7, 1960



PHOTO BY DIXON

Seymour Band Wins Sweepstakes Award

The seventy-two piece member Seymour Panther High School Band made a sweepstake award in the Interscholastic League Contest at Midwestern University last Saturday, April 2. In order for a band to win such an award, a first in marching, a first in concert playing, and a first in sight reading must be made. The band contest for Region XIV is held at two different times during the school year. The contest for marching was held last November 10, 1959, in Coyote Stadium in Wichita Falls. At this contest all four judges for concert gave them a first and the sight reading judge gave them a first. They could have still made a first in marching and in concert even if one judge had given them a second rating in each contest, but all eight judges gave them a first division rating. As far as the records show this is the first time the Seymour Band has made a sweepstake award.

Thirty-one bands performed last Friday and Saturday with eight of these in Double A classification. In this region there were only four bands making such an award.

Bands are judged individually and not against each other. All bands can make from a first through a fifth division. The band played "National Victors March" by Oliviodoti, "A Song of Jupiter" by Handel, and "Elsa's Procession to the Cathedral" by Wagner. In Student Conducting Ysleta Beall made a first rating and Virginia Jones received a second.

During this past year the band has played at all of the football games, participated in the Jacksboro Music Festival. They played in the Thomas Jefferson High School Band Festival in Dallas during March. Four members played in the All Region Band in Graham last December and one member tried out in the area contest in Stephenville and made the All State Band. This member, David Foyt, placed third bass clarinetist out of twelve from the entire State to play in the concert band during the Texas Music Educators convention in Austin.

Soloists in twirling, instrumentation, and ensemble groups have performed at the different festivals receiving high ratings for

their work. The twirlers performed for their interscholastic league contest last November and the solo and ensemble groups will go to Midwestern University Saturday to place for honors.

The members of the Band have worked hard and spent many hours of practice in order to receive their outstanding honors and awards. There are only three seniors in the band this year with most of the band being eighth graders and sophomores.

The band will present its annual spring concert in the High School Auditorium April 28.

The Seymour Band Boosters Club this year has worked on different projects to support the band in its different activities. Money from these projects have fed the members and yell leaders on trips to some of the football games, have bought band jackets for the seniors, sponsored parties for the junior high band as well as the fifth graders. They also helped to put up the neon sign that is on the courthouse lawn.

Few people realize how much it costs for a student to play in the

band while earning credits for graduation. Most parents have to spend approximately one hundred and fifty dollars for a beginner to buy a horn. After the cost of the horn comes the cost of reeds and different supplies that a band student uses throughout the year. Not only do band members earn credits toward graduation in high school, but if a person is an outstanding player he or she will in all probability be offered a band scholarship at some college or university.

The members of the band, together with other classmates who participate in different Interscholastic League events such as the literary events, chorus, debate teams, spelling bee, and athletics are happy to help the Seymour school win as many honors and trophies as they can.

Officers in the Band are Ysleta Beall, president; Bill Cross, vice-president; Jill Holmes, reporter; Maribeth Johnson, treasurer; Carmen Carter, secretary; librarians are Dianne Robinette and Ann Holbert; and the manager is Aldin Warren.

Drum Major is Gloria Martin;

assistant drum major and twirler, Carmen Carter; and Rosemary Randal, Nixie Louise Bailes, Janette Roden, Lynda Moss, and Sandra Shaver are twirlers.

Other band members are: Edwin Balch, Gloria Battles, Tim Brashear, Kent Brashear, James Butler, Butch Coltharp, Don Crouch, Jane Eiland, David Foyt, Judy Higgins, Terry Hodges, Lonnie Holub, Elmo Hooser, Joel Hurley, Roy Jenkins, Virginia Jones, David Knezek, Leonard Kunkel, Ronald Laney, Harry Maciek, Joy Martin, Teddy Martin, Minda Miller, Joan Mooney, Gary Motl, Lloyd McCauley, Lynn McLarty, Joe Orsak, Wacila Pruitt, Anita Rainwater, Joe Clay Ross, Wanda Schulz, Joe Warren, Dick Wirz, Becky Bishop, Charles Burdick, Gayle Clark, Melba Gilstrap, Shirley Hughes, Margaret Knezek, Ronald Kunkel, Jill Larson, James Malone, Wesley Matus, Charles Melear, Carolyn Morgan, Patsy Roden, Paulette Shaw, Peggy Simaichl, Ronnie Slaggle, Kay Speck, Emmla Suttles, Sherry Tate, William Vacek, Janice Vita, Ann Walton, Brenda Witt, and Louis Albison.

Rider High Band Director Named

Assuming the duties of band director for Rider High School at the beginning of the fall term in September will be Charles H. Enloe, a native Wichitan who has been serving as band director in Seymour the last seven years.

Employment of Enloe as new director for the Rider Raider Band was announced Wednesday by Supt. Joe B. McNiel.

"We have had many applications from all over the state for this position but after careful screening and interviews we of the school system feel that Charles Enloe is the best qualified to replace Harold Jackson who resigned this summer as the Rider band director," Dr. McNiel said.

Jackson resigned to become band director at Sul Ross State College, Alpine.

Enloe has had 15 years of band experience, serving at Nederland High School five years; Lamar Tech High School in Mexico a year and at Monahans High two years.

Native

The new Raider Band director was born and reared in Wichita Falls, graduating from Wichita Falls High School in 1938.

He holds a bachelor of music education degree from Southern Methodist University and a master of music education degree from the Vandercook College of Music, Chicago, Ill.

While attending SMU he was a member of the Mustang Marching Band, SMU Symphonic Band and SMU Symphony Orchestra. He was assistant and student conductor of the symphonic band under the direction of A. Clyde Roller who is now the director of the Eastman Wind Ensemble, Rochester, N.Y.

He also played with the American Legion Band, Dallas Symphony, numerous professional show and dance band groups, Dallas Union Concert Band and Texas Wesleyan College Symphony.



CHARLES H. ENLOE

Phi Kappa Lambda, American School Band Directors Association, Texas State Teachers Association, associate member of the Music Educators National Conference, Dallas Musicians Union, Texas Music Educators Association and Texas Bandmasters Association.

Enloe has served as a judge in marching, solo, ensemble, concert and sight reading in Interscholastic League contests in Texas and Oklahoma and he has taught at different summer camps. He currently is teaching in the summer band camp at Midwestern University and he has been director for summer camps at Monahans and Seymour.

Citations

He received the outstanding music student award from SMU in 1946 and graduated on the Dean's Honor Roll.

Enloe has played both trombone and bassoon with the Wichita Falls Symphony and Beaumont Symphony.

While attending the Chicago college he participated in the symphonic band, the symphony, Men's Glee Club, a cappella choir, brass ensembles and studied privately with Jaroslav Cimerka at Northwestern University.

He is a member of Blue Key Fraternity, Phi Mu alpha Sinfonia Fraternity of America, helping organize the chapter at SMU, Phi Beta Mu National School Bandmasters' Fraternity,

Other Service

The new Rider director also has directed church choirs at Nederland, Monahans and a youth choir at Seymour and he has worked with and been a member of numerous civic organizations in every city in which he has resided.

His bands have established an enviable Interscholastic League contest record, winning 10 sweepstakes and never making below a second division.

Enloe has served as region and contest chairman, on state textbook committees for orchestra and band and has served on a committee which formulated concert and sight reading handbook for judges and directors. He has served on a panel to select the outstanding band for Texas Music Educators Association and he has attended seminars at the University of Texas, University of Oklahoma, Midwestern University and Lamar College of Technology.

He is a member of the First Methodist Church at Seymour where he is a member of the official board.

He and his wife, Dorothy, have two children, ages eight and 10.

The Beaumont Symphony Orchestra

JAY DIETZER, *Conductor*

Soloist, EDUARDO FIORELLI, Violinist

Presented By

THE BEAUMONT SYMPHONY SOCIETY

City Auditorium

Sunday, January 31, 1954

3:15 P. M.

BEAUMONT SYMPHONY ORCHESTRA

PERSONNEL

y Dietzer, Conductor and Music Director

Flute:

R. W. Batty
France Meier
Charlesene Hudson

Piccolo:

Charlesene Hudson

Oboe:

C. A. Wiley
Evelyn Sweat

Clarinet:

Harry Charles
Charles R. Smith
Jo Ann Barrows

Bassoon:

Ralph Schulze
Charles Enloe

Horn:

J. A. Rippetoe
Sue Ellen Young
Laurel Brownlee, Jr.
Jimmie "M" Hudgins
W. C. Patterson
John Tahaney
Louise Jones

Trumpet:

Willie LaGrone
Albert Long
Roy Silvey

Trombone:

Bob Johnson
John Badgett
Walter R. Wortman, Jr.

Tuba:

Joe Taylor Keene

Timpani:

Edwin W. Allen

Percussion:

W. O. Harlan
DeWayne TeVault

Harp:

Elizabeth Halliday

First Violin:

Mrs. Robert E. Gilberg,
Concertmistress
S. J. Chernoff
Fred Tiritilli
Alma Love Parker
Harold T. Meehan
Louis J. Garda
Edna Brooks
Mrs. W. T. Evans
Frank Pineda, Sr.
Carole Yant
Mrs. Robert E. Meeker
Joann Cruthirds

Second Violin:

Mrs. Kurt Lamprecht
Juanita Murrah
Mrs. C. C. Cobb
Mrs. Mark R. Willcott
Charlene Kiker
Mrs. John E. Pepitone
Mrs. Edna R. Crozier
Diane Daigle
Harold H. Ramsey
Mrs. Joseph A. Sale
Mrs. Max Council, Jr.
Mrs. Harry J. Hill
Chester Weber
Mrs. Robert Mers
Mrs. George Thomson

Viola:

Mrs. J. Neal Robertson
William Welch
Hilton Lockwood
Ann Townsend
Kathryn Barker
Mrs. P. W. Latimer
Mrs. Lena Milam
Rose Marie O'Brien
Mrs. Haven H. Huff

Cello:

Harry Lantz
Philip G. Swartz
Bernard Zender
A. W. LeNoir
Cherry Lee Barrett
Frances Wimberly
Lorraine Woolman

Bass:

Oswaldo Vela
Mrs. Margaret Thomas Stopher
Robert Brock
David B. Hargis, Jr.

Librarians: Albert Garcia, Mrs. V. J. Parker
Business Manager: Chester Weber
Acting Personnel Manager: Chester Weber
Properties Manager: Harold H. Ramsey

Steinway

The Instrument of the Immortals

brings golden
days of music
into your home



JEFFERSON MUSIC COMPANY

TEXAS

Music

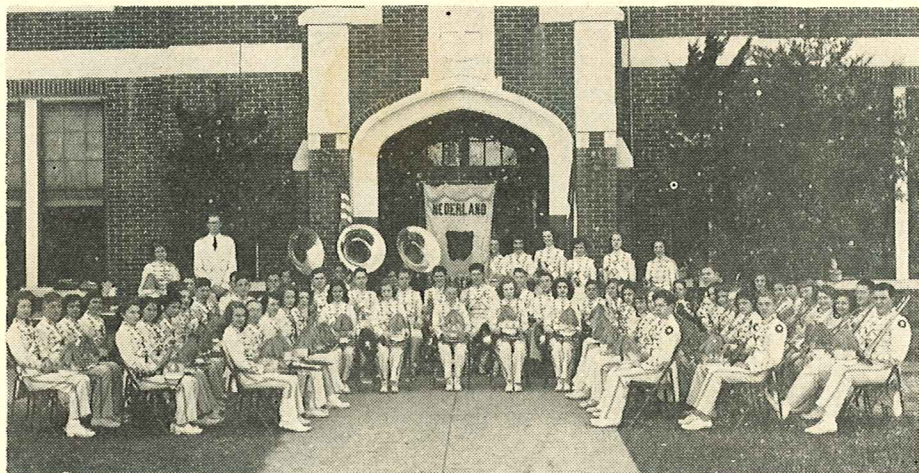
EDUCATOR



NOVEMBER
1950

PRICE 25c

Nederland High School Band



The Nederland High School Band of 1949-50 was a young band, but it was a good band just as the past bands of Nederland have been. The students made a first division at contest in concert playing and in sight reading.

Mr. Charles H. Enloe, a graduate of Southern Methodist University, came to Nederland in the fall of 1949. Since an assistant has been hired for this year it will mean more for the future bands as this is the first time in history students will have a chance to take band in the fourth and fifth grades. The assistant director is Mr. Harry Charles, another SMU graduate.

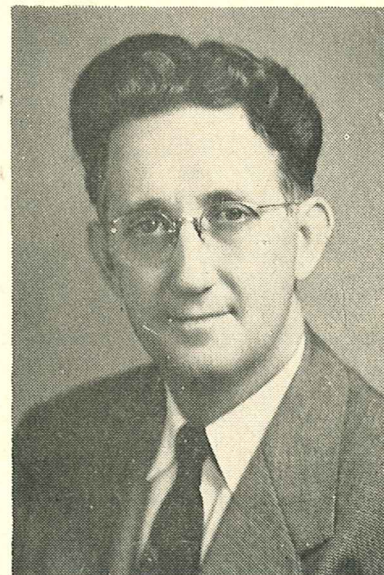
The past year was a very successful year for the band because of the cooperation demonstrated by the students; the Superintendent, Mr. Clarke A. Mathews; and last but not least the School Board. The School Board and Mr. Mathews are striving to give the students of Nederland the very best possible in music educa-

tion. We will soon have a new building for the high school and it will have one of the finest band houses in this vicinity as well as a new modern choral rehearsal room.

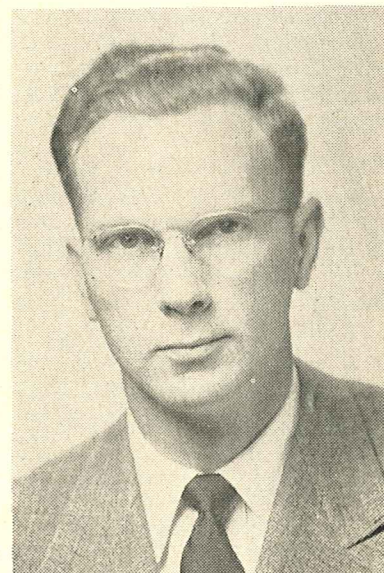
Even though the uniforms are easily soiled since they are solid white, they really rate the compliments wherever they are worn. They make a very striking appearance out on the football field as well as on the concert stage.

The very best of instruments are bought for the band as the School Board feels that it pays to buy the best in the long run.

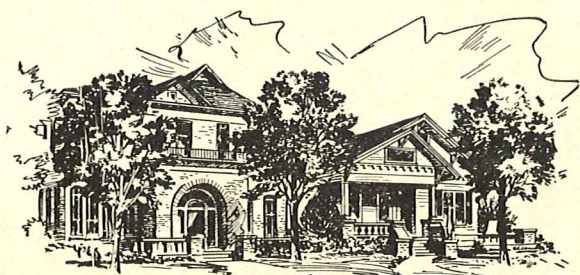
The people of Nederland are proud of their band and they always "back" the band. With the present feeder system started, the new band house in the making, the cooperation of the School Board and Mr. Mathews, Nederland has a good future for the bands. Mr. Enloe and Mr. Charles both feel as if they also have a good future working with the band students and the administration in the Nederland Schools.



Clarke A. Mathews
Supt. of Schools



Charles H. Enloe
Director



617 West Tenth Street

Dallas 8, Texas

MAXEY M. HATCHER

Dealer in Woodwind Instruments

G. Leblanc, Noblet, Jean Cartier
Kohlert, Langenus, Joray
Artley Flutes, Linton Oboes
and Bassoons

We Specialize in the Repair of
Clarinet, Flutes, Piccolos, Oboes, and Bassoons Only



Music Educator



Uses Feeder System

When school bells rang for the opening of this term, the Nederland High School Band students could



HARRY CHARLES

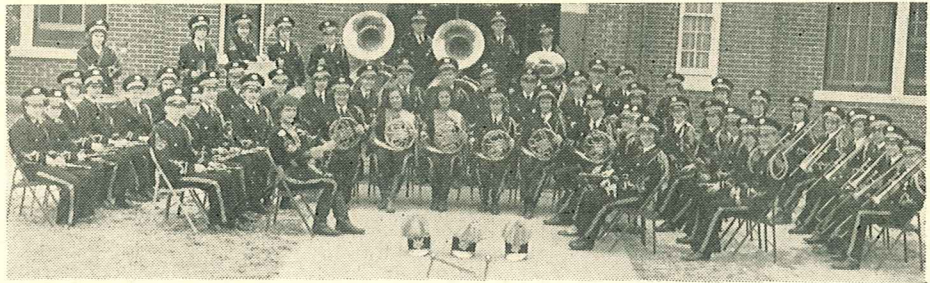
have boasted of the most modern band house in this section of Texas. The structure alone cost \$65,000. This does not include the cost of the music sorting racks, uniform racks, and other furniture. The main rehearsal room has the latest equipment for heating and cooling the building. There are four practice rooms, a huge ensemble practice room, a library, instrument room and an uniform room.

Of course, the best and latest equipment in musical instruments is used by the students. The students furnish their own small instruments and the school supplies the others.

The Nederland Schools are proud of the feeder system that was started in 1950-51 when Mr. Harry Charles started a class of beginners in the fourth and fifth grades in addition to taking over the Junior High Band students. This was the first time students in those grades had an opportunity to take band. The first beginners group will comprise most of the High School Band beginning next fall. Each year since that time Mr. Charles has started a new beginners' class. Mr. Charles took his Junior High Students to contest this last spring and for their first contest made a remarkable rating.

The beginning group, as well as the Junior High Band, has played for different programs throughout the past three years.

Since Nederland has three school buildings now, the Grammar School is composed of the 5th, 6th, 7th and 8th grades. From these four grades Mr. Charles has approximately one hundred and seventy-five students. He has three different bands for rehearsal each day in addition to sectional rehearsals. Last year the Junior High Band students bought white coveralls to wear while performing at the half time for ball games.



Nederland High School Band

The Nederland High School Band under the direction of Mr. Charles H.



CHARLES ENLOE

Enloe is small in the number of students but their performances in past have been excellent. For the past three years the High School Band has won numerous first divisions in marching, sight reading, and concert playing at contests. When Mr. Enloe starts band rehearsals next fall, he will have the largest band Nederland has had for many years. This will be due to the feeder system that was started in the lower grades. Mr. Enloe will not only have a large band, but it will be a well playing band since most of the students will have been playing for four years.

The High School Band was outfitted with new uniforms last year. The uniforms are double breasted in style and are black with gold trim. The band parent organizations have given their whole hearted support to the bands. Not only do they provide for the socials for the bands, but are always willing to help the band directors during the football season and for other work when called upon.

Mr. Enloe and Mrs. Charles always have the cooperation from the Superintendent of schools, Mr. C. A. Mathews, and the principals, that is essential for a successful band program. With this cooperation, the best musical equipment, uniforms, and the modern band houses, the band directors in the Nederland Independent School District are very proud

of their bands. This is also true for the band students and for the community of Nederland.

C & S MUSIC, INC.

4039 E. Belknap
Forth Worth, Texas

Dealers for:

Holton
Bach
Martin

Armstrong Flutes
Cable Pianos
WFL Drums

VA-3177 — VA-3800



Write Today!

WENGER MUSIC EQUIPMENT CO.
Owatonna, Minnesota

WENGER

CHORUS RISERS

- Set up speedily
- Take down instantly
- Store compactly



THE PERFECT BLEND OF
QUALITY • ECONOMY

BAND UNIFORMS

with
PERSONALIZED SERVICE
FROM
DESIGN TO DELIVERY

Write Today

Fruhauf
SOUTHWEST Uniforms

WICHITA 2, KANSAS

Sunday, January 29, 1950 SUNDAY ENTERPRISE

Three Students Of Nederland High To Play in State Band

NEDERLAND, Texas, Jan. 28. (Spl)—Three members of Nederland high school band, Jack Childress, Freddie Cessac and Robert Marcontel, will play in the all-state band of selected high school students at the Texas Music Education association's convention, February 8 to 11, at Mineral Wells.

The trio will be accompanied by Charles H. Enloe, director of the band here. Young Childress and Cessac will play the trumpet, and Marcontel the trombone.

The all-state band, which will play music they will give at state-wide band contests this spring, will be directed by Henry Fillmore, composer, and Dr. Frank Simon of the Conservatory of Cincinnati.

Alfred Smith, trombonist, will play in the all-state band as the representative of Port Neches high school band. He will be accompanied by Frank Gioviale, director.

Midcounty Review, Thursday, May 3, 1951

HIGH SCHOOL BAND WINS TWO FIRST PLACES

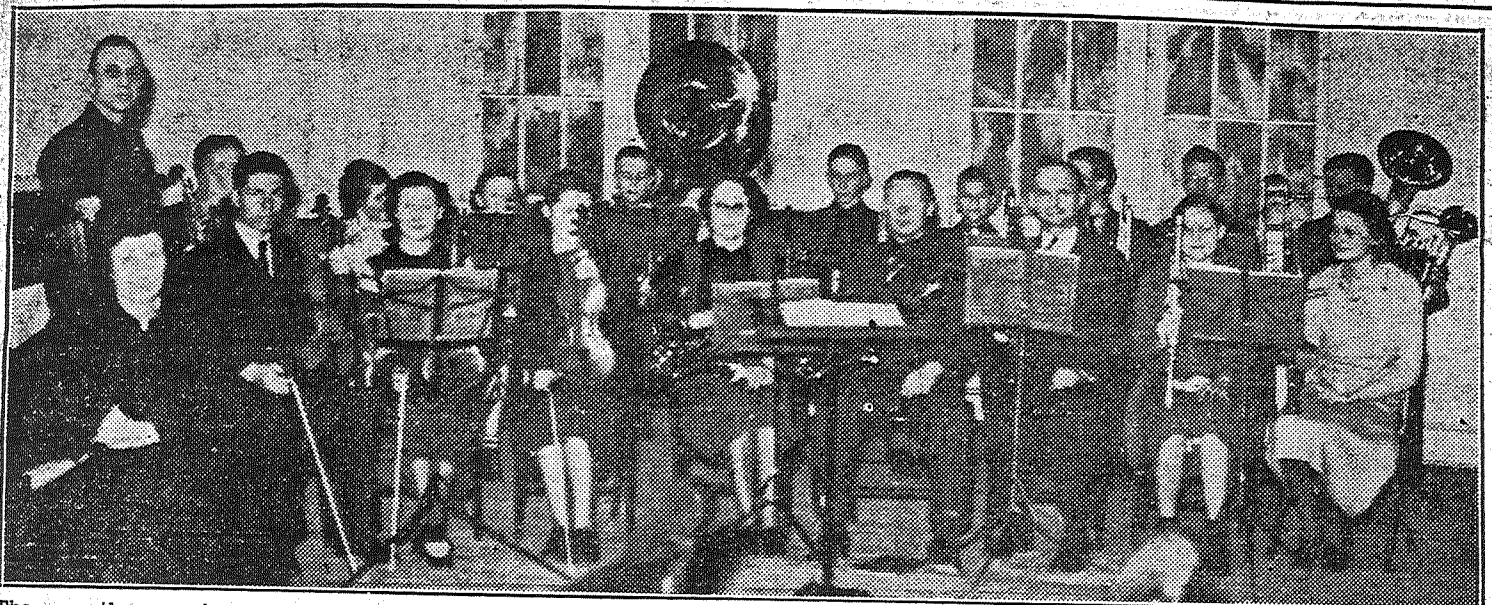
Two first places were won by the Nederland high school band last Saturday at Houston in a Region 5 playing and sightreading contest.

The local band, under the direction of Charles Enloe, placed first in both concert playing and sightreading. This entitled the band to a "sweepstake victory", according to a Houston paper, as the Nederland band also won first place in marching last December.

A special trophy for winning in the first division will be presented the local band. Assistant band director is Harry Charles.

The two student directors, Billie Sue Gallier and Willie LaGrone, won second place in directing.

Grant Street Methodist Only Wichita Falls Church Maintaining Orchestra



The recently organized 18-piece orchestra of the Grant Street Methodist church will make its initial appearance at the evening services of the church Sunday, with Paul Seeds directing.

Several years ago the Lamar Avenue Baptist church had a similar group, but at present the Grant Street orchestra is the only church instrumental group in existence here. Rev. H. Grady May, pastor, will be in charge of the services. The Sunday concert will feature a baritone horn solo by Jack Coleman and a vocal solo by Mrs. George Towles.

In the picture are seen Director Seeds, Mrs. O. F. Coleman, pianist; Genaro Gonzalez, Paula Mae Walker, Wilma Engle, Kathleen Shy, Leta Mae Walker, violinists; Billy Ayers, Frank Goff, George Shy,

trumpets; Phyllis Seeds, Earlene Neal, Rev. May, clarinets; Mrs. R. E. Neal, Eugene Firtle, Hubert Geannet, saxophones; Charles Enloe, trombone; Jack Coleman, baritone horn; Dick Seeds, bass horn.

'Texans' In Contests

Paul Seeds' Band Leaves City To Attend Battle Of Flowers At San Antonio

Paul Seed's "Texans," official band of Texas, left Wichita Falls Wednesday morning for San Antonio where they will attend the Battle of Flowers being held there in connection with Fiesta week.

The "Texans" are scheduled to participate in a concert contest which starts Thursday morning and continue through the day. Friday at 2:45 p. m. they will enter the marching contests.

A large banner advertising the coming West Texas Chamber of Commerce convention here will be carried by the band.

High school students included in

the 75 who are making the trip are: Glen Howeth, Kathleen Shy, Kathryn Tompkins, Bobby Hayes, Charles Inge, Smith Mowrey, Harry Holt, Jack Coleman, Dick Seeds, Buddy Tallent, Billy Mahoney, Norma Jo Faulkner, W. A. Eliff, H. K. Holland and Garland Wessel.

The group is scheduled to leave San Antonio Saturday morning for Austin where they will be met by Governor Allred. They will play a concert there, after which they will be shown through the capitol and grounds. They will also appear in a concert in Temple. They will arrive in Wichita Falls Tuesday, April 26.

MONDAY, APRIL 12, 1937

'TEXANS' WIN MANY HONORS IN ABILENE BAND COMPETITION

A complete report on the honors won by Paul Seeds' Texans in the week-end West Texas band contest at Abilene was received Monday morning.

Two first place gold cups for marching and playing were awarded for band winnings in the municipal division. In the solo division, out of 32 entries 15 received first division medals. Jack Coleman, baritone horn soloist, scored 98, highest solo score made by any division contestant. Dick Seeds, trumpeter, scored 95, high for trumpet and cornet players.

In the excellent class were Jerry Biles, saxophone; Dick Seeds, bass horn; Charles Enloe, trombone; Billy Ayers, trumpet; Norma Jo Faulkner, saxophone; Gerald Hodges, clarinet; Robert Thomas, trumpet; Joe Shelton, trumpet; Junior Gregg, trumpet; C. W. Weehunt, trumpet; Wesley Roberson, bass horn; Marshal Neal, clarinet; Kathleen Shy, clarinet.

The entire band scored 90, third highest score of all bands entered. Phyllis Seeds, drum major, won second in that division, one point below the winner.

In the good class were Frank Goff, trumpet; Howard Hovis, clarinet; Wilma Engle, trombone; Charles Butts, trumpet; Billy Mahler, clarinet; H. W. Bryans, clarinet; Billy Fine, clarinet; H. K. Holland, trumpet; Earlene Neal, clarinet; Joyce Howle, clarinet; Eula Lee Cooper, saxophone; Alvin Mann, trumpet.

BAND SOLO CONTESTS TO BE ENTERED BY 24 FROM WICHITA

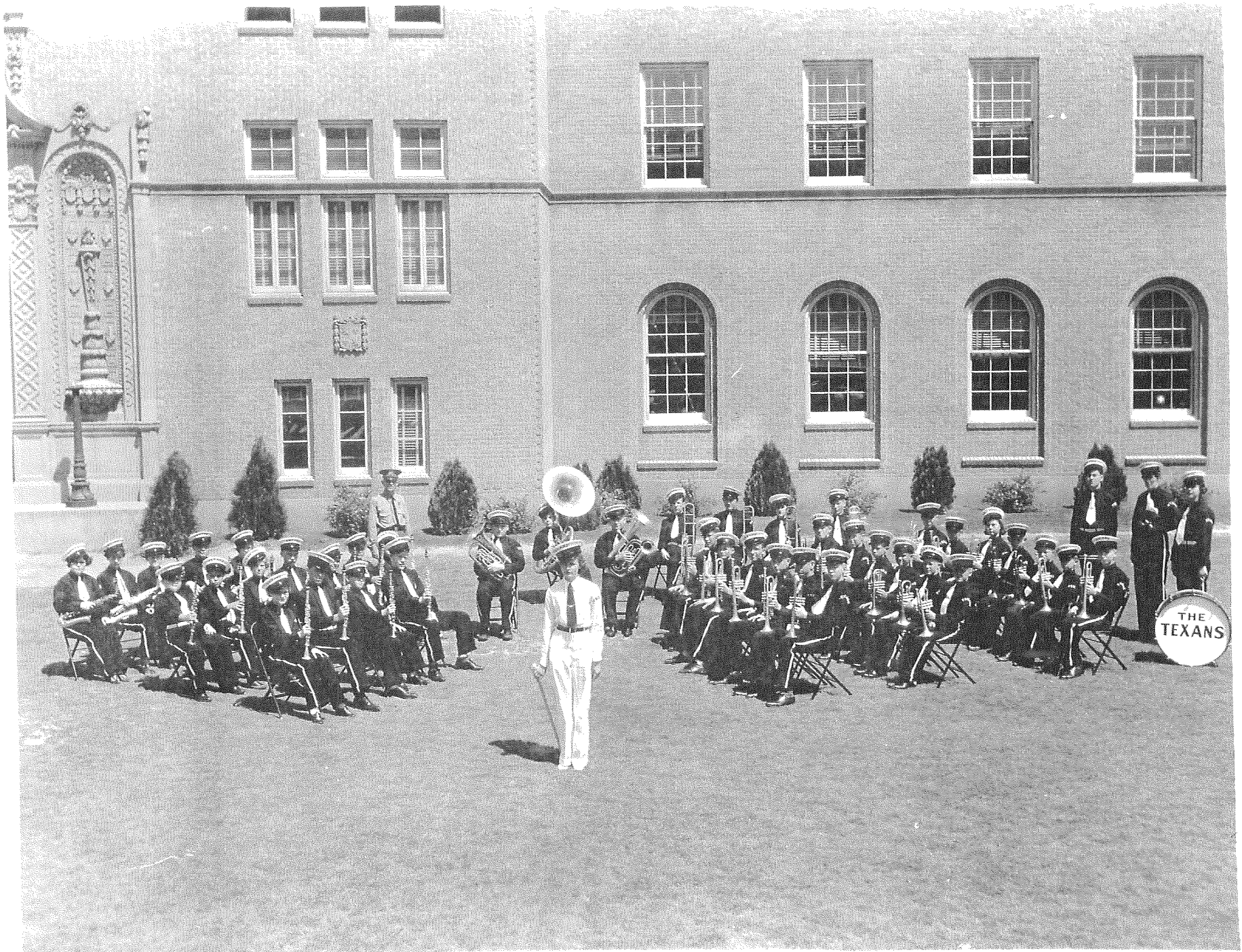
Twenty-four Wichita Falls people will participate in band contests of the North Texas Band Teachers' association at Abilene Big Spring in April.

Each of the 24 is a pupil of Paul Seeds, director of the Community band here. Mr. Seeds' Los Capitanes won the state contest at Las in 1932, and the Community band will compete for state honors this year. The state contest will be held at Big Spring.

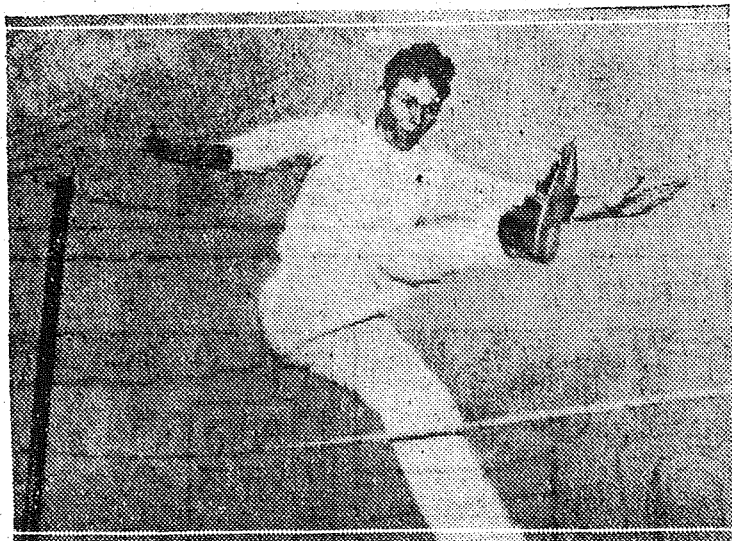
Applications to compete in solo contests have been made the following: Junior Gregg, 8-year-old class trumpet; Wallace J. 10-year-old class trumpet; Doris Campbell, 11-year-old class trumpet; Frank Goff, 11-year-old class trumpet; N. G. Blacklock, 12-year-old class cornet; H. K. Holland, 13-year-old class cornet; Dick Seeds, 13-year-old class trumpet, bass; 18-year-old bass; Wesley Roberson, 14-year-old trumpet; Garland Wessel, 14-year-old cornet; Alvin Mann, 14-year-old trumpet; Charles Enloe, 15-year-old trumpet; Chas. Enloe, 15-year-old trumpet; L. Maxwell, 14-year-old trumpet; Ayers, 15-year-old; Joe Shelton, 15-year-old trumpet.

Wilma Engle, 14-year-old trombone; Charles Enloe, 15-year-old trombone; Doris Carter, 16-year-old trombone; Jack Coleman, 18-year-old and 18-year-old baritone; Biles, 13-year-old saxophone; Earlene Neal, 11-year-old clarinet; W. Bryans, 10-year-old clarinet; Byron Bryans, 10-year-old clarinet.

Contestants are admitted in competition for pupils of their own and above.



Up in the Air Again



Charles Enloe, lanky thinly clad, sails up into the air and is shown here ready to go over and down at a height of some 5 feet. Enloe, snappel while taking a few preliminary jumps over the bar preparing for the track season, is scheduled to make a wonderful showing in the forthcoming dual meets with other schools, in the invitation meet at Electra and in other competition.

FALLS

his own line of endeavor.

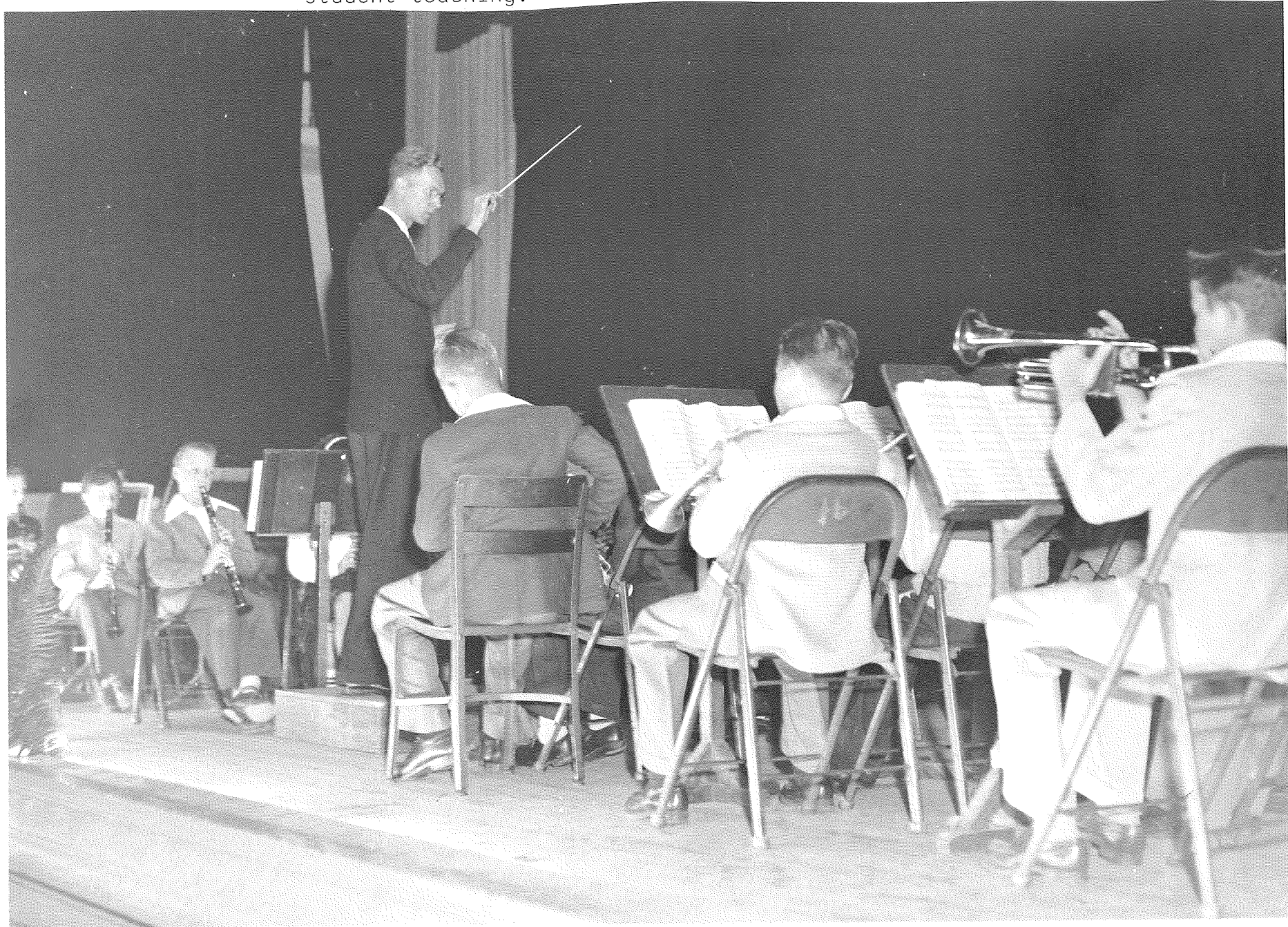
Enloe In High Jump

A preliminary survey reveals that Charles Enloe will fill an important niche in the high jump event. Enloe, who has been practicing diligently the past few weeks was clearing the bar yesterday afternoon with little effort well above five feet. W. J. House is the likely leader in discus hurling.

In the broad jump, Wilfred Boatman is attracting no little attention with his jumps around 18 feet, even when under pressure of a photographer. Big Ed Neal picks up a 12 pound shot and pushes it around over the practice field much as any other candidate might handle a baseball. In yesterday afternoon's workout, Neal was getting well over 40 feet in his half-serious efforts at the shot. For the edification of onlookers, Neal toyed with the 16 pound pellet and crowded the 38 foot mark with the heavy shot.

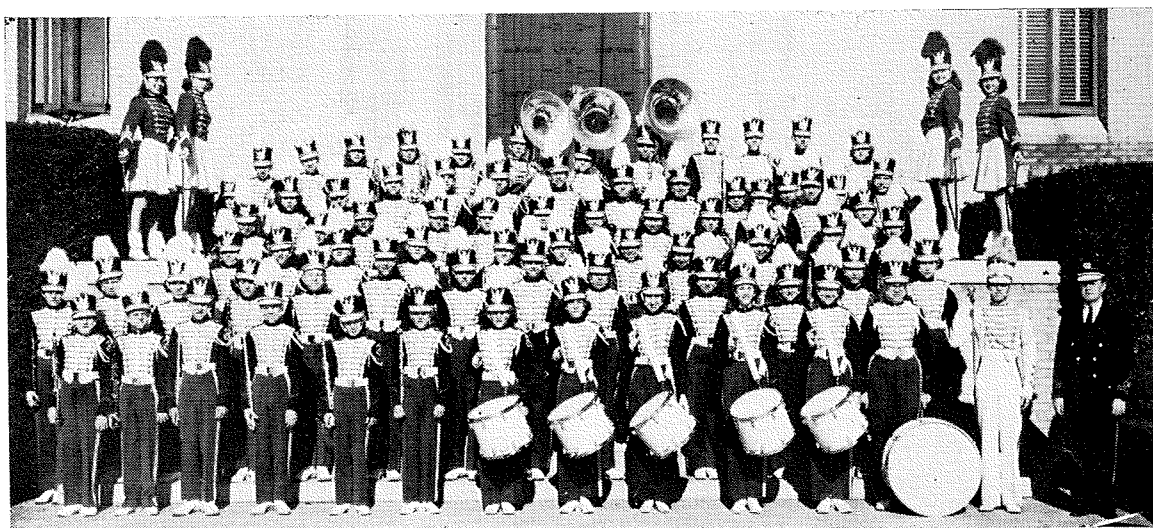
District Meet April 14

The first band Charles ever directed - an elementary school in the Highland Park School District, Dallas. Earl Ray was his supervising teacher. He even got paid for doing his student teaching.

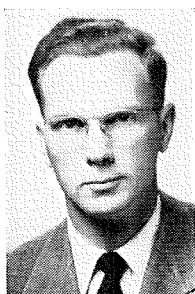




Ellis P. Wood
Director



Longview



Charles H. Enloe
Director



Mexia



Paschal — Fort Worth



N. J. Whitehurst
Director

Seymour, Texas 76380
May 7, 1986

Mr. Charles Enloe, Band Director
Seymour Independent School District
409 W. Idaho
Seymour, Texas 76380

Dear Mr. Enloe:

We want to thank you for asking us to serve as sponsors on the band trip to Carlsbad. We thoroughly enjoyed it. The band is a group of fine young people. They were courteous, well-mannered, and well-behaved.

Thank you for everything you have done for the band this year.

Again, thanks for the opportunity of being sponsors on this trip. We would be happy to accompany the band on any trip in the future.

Sincerely,

Larry & Virginia Pfau

Larry and Virginia Pfau

Seymour, Texas 76380
May 7, 1986

Mr. Newman Young, Superintendent
Seymour Independent School District
409 W. Idaho
Seymour, Texas 76380

Dear Mr. Young:

We want to thank you for the opportunity of serving as sponsors on the recent band trip to Carlsbad, New Mexico. It was a privilege and a pleasure to travel with this group of young people. They were courteous, well-mannered, and well-behaved.

The school system and the entire community can be proud of the performance and the appearance of the Seymour Panther Band at the Carlsbad Music Festival. The band was very impressive. Mr. Enloe and Mr. Bibb are to be commended for the work they have done with the band this year.

Thanks again for the opportunity of being sponsors on this trip. We would be happy to accompany the band on any trip in the future.

Sincerely,

Larry and Virginia Pfau