

ROBERT FIELDER

Robert E. Fielder was born on September 30, 1915 in Winters, Texas, the second child of John and Nita Fielder. He graduated from high school and enrolled at Texas Tech where he received a B.S. degree in 1937. He took his first public school job in Spur, Texas in 1937. After two years, he was offered the band job at Phillips, Texas where he taught until the outbreak of World War II. He joined the Navy and served with distinction until 1946. Discharged, he moved back to Abilene to work with his father in the lumberyard business and helped Raymond Bynum with the band program at Abilene High. In 1946, Bynum left Abilene High to become band director at McMurry College and Fielder became the band director at Abilene. He help develop the Abilene program into a state leader, adding staff and developing a junior high program which fed into the high school. He completed his Masters degree at Hardin-Simmons University in 1952. He served as Region Chairman of TMEA, State Band chairman of TMEA and President of TMEA. He was also a President of the Alpha Chapter of Phi Beta Mu. His Abilene High band was one of the outstanding bands in the state and his marching bands were acclaimed by all. During his tenture at Abilene High, the football team won three state championships so the marching band had statewide exposure. In 1962, he moved into school administration and he served as principal of College Hills Elementary, Director of Special Programs and Director of Personnel. His talent for organization with his bands followed him into administration and his techniques are still used by the Abilene schools personnel office. During these years in Abilene, he was active in church and civic affairs and many ex-students became music educators and teachers, following his love of education. He utilized the students and faculty of the three

Fielder (2)

colleges in Abilene.

In 1969, Fielder was offered a fellowship at East Texas State, where he completed his Doctorate in Education and became a faculty member at the University of Texas at Dallas, where he taught until retirement.

His wife, Margaret, was at his side throughout his years as a band director and as an educator. They presently reside in Plano, Texas.

Bob Fielder left his mark on music education that will be remembered by many. His pursuit of knowledge earned him his three degrees, attendance in schools from Texas to Colorado, friendship with educators from Maine to California, but most of all, he left his work-ethic with students who are active participants in local and state government and education.

10

THEMES

FOR

HALF-
TIME

VOL. I

by ROBERT E. FIELDER & DURWARD B. HOWARD

\$2.00

TEN THEMES FOR HALF-TIME

VOLUME I

BY

ROBERT E. FIELDER
ABILENE HIGH SCHOOL
ABILENE, TEXAS

AND

DURWARD B. HOWARD
TEMPLE HIGH SCHOOL
TEMPLE, TEXAS

- #1 - AN OPENING SHOW FOR SEPTEMBER
- #2 - AT THE OPERA
- #3 - FAVORITE FOODS
- #4 - A FLOWER SHOW
- #5 - WISHES
- #6 - CITY TRADEMARKS, NICKNAMES
- #7 - VANISHING AMERICANA
- #8 - LANDS OF DREAMS
- #9 - BILLBOARDS ALONG THE HIGHWAY
- #10 - CHRISTMAS TOYS

COPYRIGHT 1958

BY ROBERT E. FIELDER AND DURWARD B. HOWARD
2 EAST ZENITH AVENUE - TEMPLE, TEXAS

FOREWORD

BASICALLY, THERE ARE TWO CONCEPTS IN THE EVOLUTION OF THE HALF-TIME SHOW. ONE CONCEPT IS FOUNDED UPON THE PRESENTATION OF PRECISION DRILL WHILE THE OTHER GAINS ITS INTEREST THROUGH PAGEANTRY. IN PAGEANTRY, THE SHOW IS GENERALLY CENTERED AROUND A THEME OR AN IDEA AND IS GIVEN CONTINUITY THROUGH MUSIC, CHANGE OF FORMATION AND A SCRIPT. THERE ARE, OF COURSE, SUCCESSFUL COMBINATIONS OF BOTH CONCEPTS, AND WE, AS BAND DIRECTORS, DO NOT ADVOCATE THE STRICT ADHERENCE TO ONE TYPE SHOW, NOR DO WE CLAIM THE SUPERIORITY OF ONE SYSTEM OVER THE OTHER. THE HALF-TIME SHOW IS PRIMARILY OF LOCAL CONCERN AND IS DEPENDENT UPON THE ABILITY, BACKGROUND AND TRAINING OF THE DIRECTOR AND HIS STUDENTS, AS WELL AS THE PREFERENCE AND INTEREST OF THE COMMUNITY WHICH HE SERVES.

IN THE PRESENTATION OF PAGEANTRY OR THEMATIC HALF-TIME SHOWS IT HAS BEEN OUR EXPERIENCE THAT THE IDEA IS OF PARAMOUNT IMPORTANCE. OFTEN A SINGLE FORMATION, MUSIC TITLE, EVENT, OR A CENTRAL IDEA WILL SUGGEST A THEME UPON WHICH AN ENTIRE SHOW CAN BE CONSTRUCTED. THE INCREASED INTEREST OF BAND DIRECTORS IN SUMMER WORKSHOPS, MARCHING CLINICS, AND HALF-TIME PUBLICATIONS GIVES AMPLE EVIDENCE THAT DIRECTORS SEARCH FOR AN IDEA, AN IDEA AROUND WHICH THEY CAN BUILD HALF-TIME SHOWS FOR FOOTBALL SEASON.

WITH THIS IN MIND WE HAVE COMPILED TEN OF OUR HALF-TIME THEMES INTO THIS BOOKLET IN THE HOPE THAT THEY MIGHT BE OF ASSISTANCE TO OTHER DIRECTORS. THESE SHOWS ARE NOT NECESSARILY OUR BEST OR OUR WORST, BUT SHOWS WHICH WE CONSIDERED OF GENERAL INTEREST, WELL RECEIVED BY OUR AUDIENCES. WE DO NOT LAY CLAIM THAT THESE IDEAS ARE TOTALLY ORIGINAL, NOR DO WE ADVOCATE THAT THEY SHOULD BE DONE JUST AS WE HAVE DONE THEM. IF ONE SHOW SHOULD SUGGEST AN IDEA TO YOU, WE WILL BE PLEASED.

EACH OF US EMPLOYS A DIFFERENT METHOD OF PLOTTING AND CHARTING OUR FORMATIONS, AND A DISCUSSION OF SUCH PLANS HERE WOULD BE OUT OF PLACE. THE CHARTING OF FORMATIONS AND ARRANGEMENT AND SELECTION OF APPROPRIATE MUSIC, WE LEAVE TO THE TRAINING, EXPERIENCE, INITIATIVE AND INGENUITY OF THE INDIVIDUAL DIRECTOR SHOULD HE CHOOSE TO USE AN IDEA FROM THIS BOOKLET.

IN CONCLUSION, WE WOULD BE TOTALLY UNGRATEFUL SHOULD WE FAIL TO EXPRESS OUR APPRECIATION TO THE MEMBERS, PAST AND PRESENT, OF THE ABILENE HIGH SCHOOL BAND AND THE TEMPLE HIGH SCHOOL BAND AND THE PEPPERETTES WITHOUT WHOSE INTEREST AND EFFORT THESE IDEAS WOULD HAVE NEVER BEEN.

ROBERT E. FIELDER
DURWARD B. HOWARD

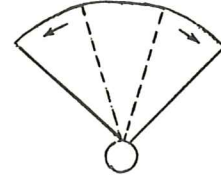

JUNE 1958

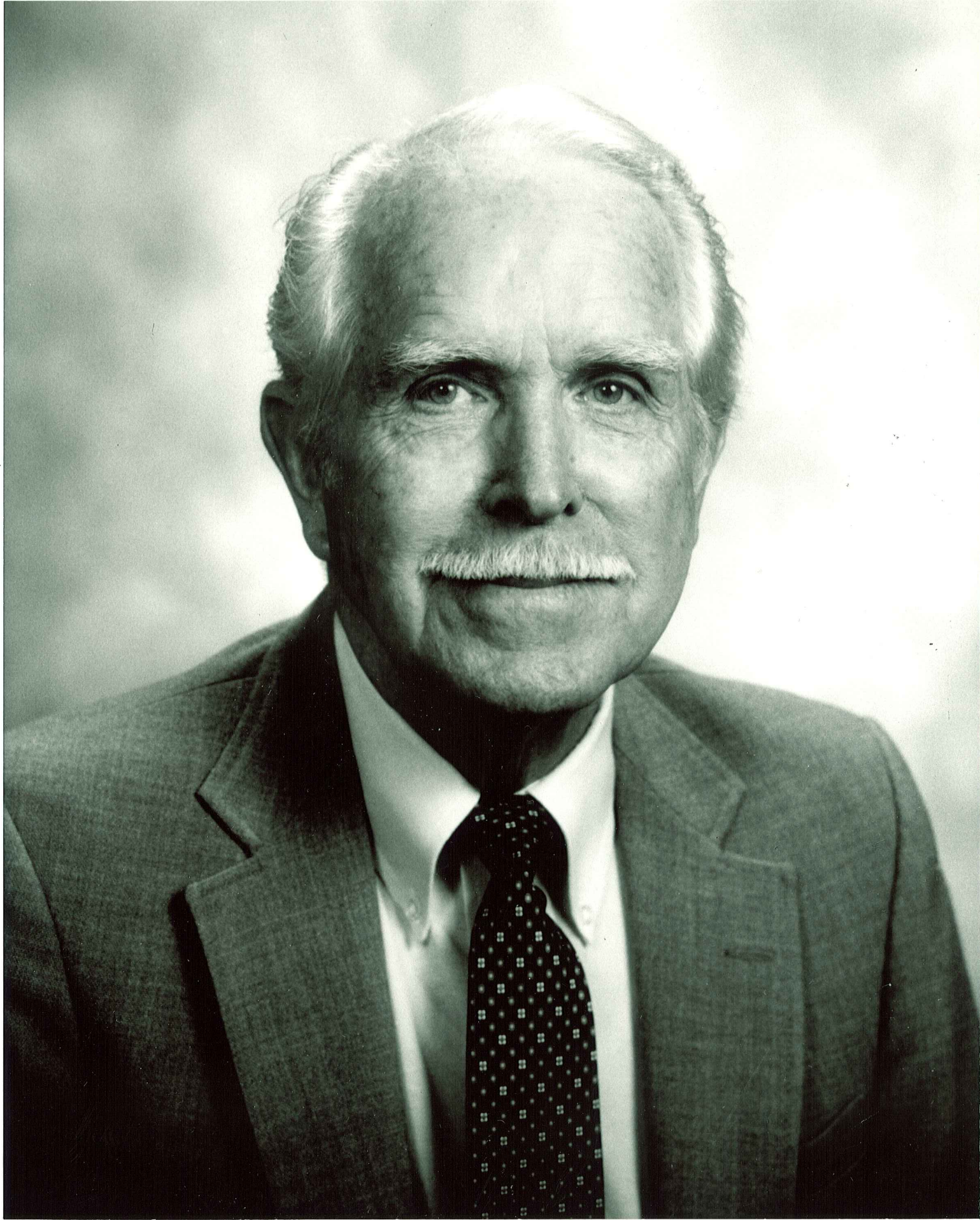
TEMPLE HIGH SCHOOL BAND AND PEPPERETTES HALF-TIME INFORMATION

TEMPLE VS *****

TEMPLE, TEXAS

DATE

MUSIC AND FORMATION	ANNOUNCER	ACTION ON FIELD
FANFARE ACROSS THE FIELD MARCH	LADIES AND GENTLEMEN: WE PROUDLY PRESENT THE TEMPLE HIGH SCHOOL BAND AND THE PEPPERETTES!	BAND AND PEPPERETTES ENTER FROM OPPOSITE ENDS OF FIELD IN REGULAR MARCHING FORMATION.
HOWDY HALO EVERYBODY HALO	EVERY YEAR ABOUT THIS TIME WE SAY "HOWDY" TO THE FALL SPORTS SEASON. AND WE LOOK FORWARD TO PLEASANT WEEK ENDS OF GRIDIRON ENTERTAINMENT. THE CUSTOM OF SAYING "HOWDY" IS A TEXAS TRADITION, AND WE HAVE MADE THIS TRADITION THE THEME OF OUR HALF-TIME SHOW TODAY. AS THE BAND AND PEPPERETTES FORM THE LETTERS H-O-W-D-Y, WE CAPITALIZE ON A COMMERCIAL CLICHE WITH <u>HALO EVERYBODY, HALO.</u>	BOTH GROUPS SCATTER-MARCH ON DM'S SIGNAL AT CENTER FIELD; MUSIC IS CONTINUOUS. FIRST FORMATION IS COMPLETE ON ENTRANCE-MARCH. BOTH GROUPS KNEEL IN POSITION SO LETTERS WILL BE MORE EASILY READ.
HI NEIGHBOR	AND NOW THE FORMATION REVERSES WITH A HOWDY TO THE OPPOSITE STANDS AS WE HEAR <u>HI NEIGHBOR.</u>	FORMATION REVERSES AND SPELLS HOWDY TO OPPOSITE STANDS.
 YOU'VE GOTTA BE A FOOTBALL HERO	FANS FORM AN IMPORTANT GROUP AT ANY FOOTBALL GAME. THEY COME TO VENT THEIR ENTHUSIASM AND TO URGE THEIR TEAM ON TO VICTORY. WE TAKE THIS OPPORTUNITY TO SAY "HOWDY" TO THE FANS AS THE BAND & PEPPERETTES FORM A FAN--THE TYPE YOU'VE PROBABLY PUT TO GOOD USE DURING THESE HOT SUMMER DAYS. WATCH OUR FAN OPEN AS WE SALUTE ALL FOOTBALL FANS WITH <u>YOU'VE GOTTA BE A FOOTBALL HERO!</u>	THE LETTERS "HOWDY" FOLD INTO A DOUBLE LINE FAN. AS BAND PLAYS, THE OUTSIDE LINES MARCH FORWARD UNFOLDING THE FAN.
 OUR BOYS WILL SHINE TONIGHT	NOT TO BE NEGLECTED AT THE BEGINNING OF FOOTBALL SEASON ARE THE TEAMS. TO SAY "HOWDY" TO THE BOYS OF THE GRIDIRON, WE FORM NEXT THE STICK FIGURE OF A FOOTBALL PLAYER AS HE READIES TO KICK THE BALL. AS THE BALL SAILS DOWN THE FIELD, WE HOPE YOU'LL AGREE THAT <u>OUR BOYS WILL SHINE TONIGHT.</u>	FAN FOLDS INTO THE STICK FIGURE OF A FOOTBALL PLAYER AND A FOOTBALL. AS LEG NEAREST BALL "KICKS" FOOTBALL MOVES DOWN-FIELD AFTER "KICK".
BANDS TO LOOK SHARP (OR 76 TROMBONES)	NOW WE SAY "HOWDY" TO THE MEMBERS OF ALL HIGH SCHOOL BANDS WHO FORM AN INCREASINGLY POPULAR AND VITAL GROUP AT FOOTBALL GAMES. AS BANDS AND DRILL GROUPS TAKE TO THE GRIDIRON AT HALF-TIME, THE BAND AND PEPPERETTES FORM THE LETTERS B-A-N-D-S, AND MUSICALLY THEY URGE YOU BANDSMEN <u>TO LOOK SHARP!</u>	STICK FIGURE FOLDS TO THE LETTERS B-A-N-D-S. ALL KNEEL IN POSITION PEPPERETTES USE HAND FLASHES (WITH WHITE GLOVES) TO GIVE MOTION TO FORMATION.
GO WILDCATS FIGHT SONG	WITH THIS FORMATION THE BAND AND PEPPERETTES CONCLUDE THEIR HALF-TIME PERFORMANCE. (GIVE CREDITS FOR DRUM MAJOR, MAJORETTES, DIRECTOR, ETC.) THANK YOU AND GOOD EVENING LADIES AND GENTLEMEN.	REMAIN IN FIVE LETTERS AND MARCH FROM FIELD.



Tri-State Music Festival

ENID, OKLAHOMA

Award

THIS CERTIFIES, That the Abilene High School Marching Band
Representing Abilene High School School
from the City of Abilene, State of Texas
Rated Superior and was placed in Division I at the
TWENTY-NINTH ANNUAL FESTIVAL, MAY 4, 5, 6, 1961
Event Marching Bands Class AA

Sponsored by Phillips University and Enid Citizens
Enid, Oklahoma

MILBURN E. CAREY, Managing Director

Organization Adjudicators:

GEORGE WILSON
TRAVIS SHELTON
LUCIEN CAILLIET
KARL L. KING
JOSEPH WILLCOX JENKINS
GLENN CLIFFE BAINUM
GERHARD SHROTH
J. CLIFTON WILLIAMS

JACK MAHAN
EARL D. IRONS
MATT BETTON
REMO BELLI
FRANK SIMON
COLES A. DOTY
BUDDY DeFRANCO
TED J. CRAGER

WALTER WEHNER
GERALD HEMPHILL
FORREST McALLISTER
DON McCATHREN
HOWARD AKERS
SIDNEY BRANTLEY
CHESTER FRANCIS
CHARLES EMMONS

DALE GANZ
OSCAR STOVER
MAJ. SAMUEL KURTZ
WILLIAM GOWER
PAUL MATHEWS
OLIVER SOVEREIGN
HOUSTON BRIGHT
TONI RULLI

Lecturers

BUDDY DeFRANCO
WILLIAM GOWER
WILLIAM DOUGLASS
REX CONNER
REMO BELLI
RALPH POTTLE
DON McCATHREN

Guest Soloists

DAVID VANDERCOOI
REX CONNER
BUDDY DeFRANCO
YVONNE CHOUTEAU AND
MIGUEL TEREKHOV

Twirler

BILL WOODS

LACKLAND'S AF BAND OF THE WEST

Guest Organizations
NORAD "COMMANDERS" ORCHESTRA

U.S. ARADCOM CHORALE



Tri-State Music Festival

ENID, OKLAHOMA

Award

THIS CERTIFIES, That the Abilene High School Band
Representing Abilene High School
from the City of Abilene, State of Texas
Rated Superior and was placed in Division I at the
TWENTY-NINTH ANNUAL FESTIVAL, MAY 4, 5, 6, 1961
Event Sight Reading - Concert Band Class AA

Sponsored by Phillips University and Enid Citizens
Enid, Oklahoma

MILBURN E. CAREY, Managing Director

Organization Adjudicators:

GEORGE WILSON
TRAVIS SHELTON
LUCIEN CAILLIET
KARL L. KING
JOSEPH WILLCOX JENKINS
GLENN CLIFFE BAINUM
GERHARD SHROTH
J. CLIFTON WILLIAMS

JACK MAHAN
EARL D. IRONS
MATT BETTON
REMO BELLI
FRANK SIMON
COLES A. DOTY
BUDDY DeFRANCO
TED J. CRAGER

WALTER WEHNER
GERALD HEMPHILL
FORREST McALLISTER
DON McCATHREN
HOWARD AKERS
SIDNEY BRANTLEY
CHESTER FRANCIS
CHARLES EMMONS

DALE GANZ
OSCAR STOVER
MAJ. SAMUEL KURTZ
WILLIAM GOWER
PAUL MATHEWS
OLIVER SOVEREIGN
HOUSTON BRIGHT
TONI RULLI

Lecturers

BUDDY DeFRANCO
WILLIAM GOWER
WILLIAM DOUGLASS
REX CONNER
REMO BELLI
RALPH POTTLE
DON McCATHREN

Guest Soloists

DAVID VANDERCOOI
REX CONNER
BUDDY DeFRANCO
YVONNE CHOUTEAU AND
MIGUEL TEREKHOV

Twirler

BILL WOODS

Guest Organizations

LACKLAND'S AF BAND OF THE WEST

NORAD "COMMANDERS" ORCHESTRA

U.S. ARADCOM CHORALE



Tri-State Music Festival

ENID, OKLAHOMA

Award

THIS CERTIFIES, That the Abilene Marching Band
Representing Abilene High School School
from the City of Abilene, State of Texas
Rated T and was placed in Division Superior at the
TWENTY-NINTH ANNUAL FESTIVAL, MAY 4, 5, 6, 1961
Event Marching Band Class AA

Sponsored by Phillips University and Enid Citizens
Enid, Oklahoma
MILBURN E. CAREY, Managing Director

Organization Adjudicators:

GEORGE WILSON
TRAVIS SHELTON
LUCIEN CAILLIET
KARL L. KING
JOSEPH WILLCOX JENKINS
GLENN CLIFFE BAINUM
GERHARD SHROTH
J. CLIFTON WILLIAMS

JACK MAHAN
EARL D. IRONS
MATT BETTON
REMO BELLI
FRANK SIMON
COLES A. DOTY
BUDDY DeFRANCO
TED J. CRAGER

WALTER WEHNER
GERALD HEMPHILL
FORREST McALLISTER
DON McCATHREN
HOWARD AKERS
SIDNEY BRANTLEY
CHESTER FRANCIS
CHARLES EMMONS

DALE GANZ
OSCAR STOVER
MAJ. SAMUEL KURTZ
WILLIAM GOWER
PAUL MATHEWS
OLIVER SOVEREIGN
HOUSTON BRIGHT
TONI RULLI

Lecturers

BUDDY DeFRANCO
WILLIAM GOWER
WILLIAM DOUGLASS
REX CONNER
REMO BELLI
RALPH POTTLE
DON McCATHREN

Guest Soloists

DAVID VANDERCOOI
REX CONNER
BUDDY DeFRANCO
YVONNE CHOUTEAU AND
MIGUEL TEREKHOV

Twirler

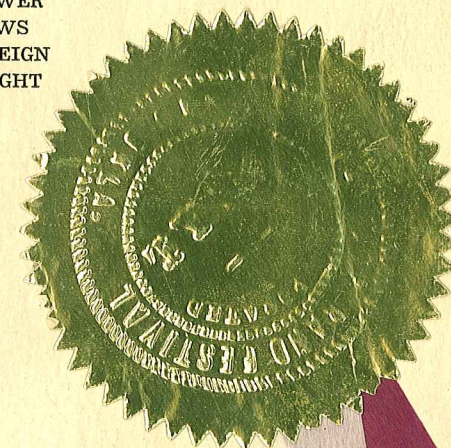
BILL WOODS

Guest Organizations

LACKLAND'S AF BAND OF THE WEST

NORAD "COMMANDERS" ORCHESTRA

U.S. ARADCOM CHORALE



Tri-State Music Festival

ENID, OKLAHOMA

Award

THIS CERTIFIES, That the Abilene High School Band
Representing Abilene High School
from the City of Abilene, State of Texas
Rated Superior and was placed in Division I at the
TWENTY-NINTH ANNUAL FESTIVAL, MAY 4, 5, 6, 1961
Event Concert Band Class AA

Sponsored by Phillips University and Enid Citizens
Enid, Oklahoma
MILBURN E. CAREY, Managing Director

Organization Adjudicators:

GEORGE WILSON
TRAVIS SHELTON
LUCIEN CAILLIET
KARL L. KING
JOSEPH WILLCOX JENKINS
GLENN CLIFFE BAINUM
GERHARD SHROTH
J. CLIFTON WILLIAMS

JACK MAHAN
EARL D. IRONS
MATT BETTON
REMO BELLI
FRANK SIMON
COLES A. DOTY
BUDDY DeFRANCO
TED J. CRAGER

WALTER WEHNER
GERALD HEMPHILL
FORREST McALLISTER
DON McCATHREN
HOWARD AKERS
SIDNEY BRANTLEY
CHESTER FRANCIS
CHARLES EMMONS

DALE GANZ
OSCAR STOVER
MAJ. SAMUEL KURTZ
WILLIAM GOWER
PAUL MATHEWS
OLIVER SOVEREIGN
HOUSTON BRIGHT
TONI RULLI

Lecturers

BUDDY DeFRANCO
WILLIAM GOWER
WILLIAM DOUGLASS
REX CONNER
REMO BELLI
RALPH POTTLE
DON McCATHREN

Guest Soloists

DAVID VANDERCOOI
REX CONNER
BUDDY DeFRANCO
YVONNE CHOUTEAU AND
MIGUEL TEREKHOV

Twirler

BILL WOODS

Guest Organizations

LACKLAND'S AF BAND OF THE WEST

NORAD "COMMANDERS" ORCHESTRA

U.S. ARADCOM CHORALE

