

DON LAWLER

TEXAS

BANDMASTERS

HALL OF FAME

2011



SPRING HILL HIGH SCHOOL BAND

IN

CONCERT

THURSDAY EVENING

MAY 13, 1954

8:00 P. M.

PAUL STROUD, DIRECTOR

Soloist:

Mrs. Joanna Byars
Lennie Pritchett
Joe Paul Stroud
John McAuley
Joe Younger
Bill Woods

Accompanist:

Mrs. Joe Cox, Jr.



Paula Reid

BASS CLARINET

Glenda Pounds
Minnie Tanner

E. CLARINET

Darlene Sullivan

CORNET SECTION

Joe Paul Stroud
Bobbie McDonald
Jerry Hensley
Jackie Tucker
Richard Baber
John Williamson
Buster Castleberry
Gene Clark
Jim Bob McCullough
Billy Woods
Lynn Bostick
Joe Younger
Charles Reid
John McAuley

Finley Bostick
Jim Baber
Buford Fountain
Thomas Bostick

PERCUSSION

Barbara Harris
Janice Martin
Don Lawler
Janet Gray

PROGRAM



Band Wins Sweepstakes at Kilgore

The Spring Hill Band, competing in the Interscholastic League Music Festival at Kilgore College on April 19, won First Division ratings in both concert playing and sight-reading. Having already won a First Division rating in marching, the band received the League's Special Award. This is the highest award that is given by band

Band Presents Concert

On Tuesday, March 11, 7:30 p.m., the Spring Hill Band presented its annual spring concert. The program included such numbers as "Beaumont Belts," "Creole Lullaby," "Lullspiel Overture," "Prairie Reflections" ("Along the Navajo Trail," "Nobody's Darlin' Mine," and "Just Because"), "His Honor March," "Begin a Beguine," "The Syncopated Clock," "Overture Eroica," "Ragtime Wedding," and "Emblem of Unity" concert march.

Soloists for the occasion were Gary Hill and Linda Whitt. Gary played "The Blue Bell of Scotland" on his Baritone and Linda played "Peasants Dance," a flute solo. They were accompanied by Mrs. Joe C. Jr.

Band Director Jerry Leard introduced eleven senior band members. They are Sarah Skinner, Carldeen Denson, Darle Sullivan, Barbara Brown, Gene Clark, Richard Baber, Bill Thomas, Jim Bob McCullough, Eddie Sensing, Doyle Younger, and Don Lawler.

Four Members Participate In All-Region Band

Four Spring Hill band members participated in the All-Region Band in Nacogdoches Jan. 5. Mr. Clarence Sawhill, band director of U.C.L.A., directed the band on the Stephen F. Austin College campus. The four who were selected for this band were Don Lawler, Sarah Skinner, Barbara Brown, and Mary Rogers. This is the first selection of Mary for the honor and the second for the other

three. This is an honor for which they may be justly proud, as these students are selected solely on their ability to play their instruments in competition with other students in our region from all class bands from B to AAAA. Don has the additional honor of being selected the best snare drummer in the entire region and will get to go to Dallas to the All-State Band on February 13-16.

Parade of the Wooden Soldiers

by JESSEL

1151 Don
 1152 Mary
 1153 Barbara
 1154 Peggy Adams
 1155 Carldeen Denson
 1156 Doyle Younger
 1157 Jim Bob McCullough
 1158 Eddie Sensing
 1159 Richard Baber
 1160 Gene Clark
 1161 Sarah Skinner
 1162 Darle Sullivan
 1163 Barbara Brown
 1164 Don Lawler

Parading The Drum Section

For
 TWO SNARE DRUMS, BASS DRUM
 and CYMBALS



HAPPY
EASTER
HOLIDAYS!

The Panther's Paws

VOL. 3

SPRING HILL SCHOOL, LONGVIEW, TEXAS, APRIL, 1958

NO.



Spring Hill Students On Honor Roll

These students made an average of ninety or above the first semester:

Barbara Brown
Evelyn Henry
Marnell Bennett
Louise Daily
Janet Gray
Carol Weaver
Elsie Woods
Lucille Teaff
Eddie Sensing
Sarah Skinner
Sonny Teaff
Sue Sikes
Della Mae Strength
Mary Rogers
Morris Ruggles
Uyvonne Martindale
Anna Ruth Marable
Don Lawler
Annette Lawler
Charles Keasler

Orchestra Performs For Credit Union

The Spring Hill Orchestra presented a program for the East Texas Telephone Credit Union on Friday night, Jan. 17. The 45 minute program included such numbers as "An Affair To Remember," "Banana Boat Song," "All Shook Up," "No Not Much," "Tammy," "Canadian Sunset," and "In the Chapel In The Moonlight." Soloists for the performance were Janet Gray, Kathryn Denson, and Charlotte Sensing. A vocal group composed of these three girls and Richard Baber and Don Lawler sang "Sincerely." In appreciation for this performance the Credit Union contributed a sizeable sum to the Band Fund, which the band appreciated very much.



LAWLER MAKES ALL-STATE

The star snare-drummer of the Spring Hill Band has done it again. For the third straight time, Don Lawler had made the

All-State Band candidate list.

He will leave for Galveston on Wednesday, February 19. On Thursday, he will try out to determine whether he will play in the sightreading or the concert band. The reading band will play music from the contest list as well as other numbers, and the concert band will give a grand concert on Saturday, February 22, at 8:00 p.m.

Skinner, Hill and Lawler Win First

Twenty-four Spring Hill Band students entered the Interscholastic League Solo and Ensemble Contest at Glade-water on Saturday, March 15. From the twenty-four entries, three received first division ratings.

The class one soloists and their ratings were: Sarah Skinner, I; Don Lawler, I; Donald Ruggles, II; Mary Rogers, II; and Della Mae Strength, III. The second class soloists and their ratings were: Gary Hill, I; Ronnie Suber, II; Charlotte Sensing, III; Zikie Graham, III; and Tommy Mullings, IV. Entering class three solos and their ratings were: Carol Rogers, II; Linda Whitten, II; and Sharon Reed, III.

The class one ensembles included a clarinet quartet composed of Sarah Skinner, Barbara Brown, Sue Sikes, and Louise Dailey, II division, and a clarinet trio composed of Barbara Brown, Sue Sikes, and Louise Dailey, II division. A



Lawler



1958 Grand Concert

TEXAS MUSIC EDUCATORS ASSOCIATION CONVENTION

Moody Center, Galveston, Texas



Photograph by Paul M. Branom, Lubbock, Texas

—SIDE 1—

THE TEXAS ALL STATE BAND

Commander Charles Brendler, U.S.N., Conductor

- ACTION FRONT - March Blankenburg
- SYMPHONIC SUITE Williams
- THE GOLDEN EAR MARCH Miguel
- LA BAMBA DE VERA CRUZ Terig-Tuccl
- THE PARROT ON THE FORTUNE TELLER'S HAT Abreu

—SIDE 2—

THE TEXAS ALL STATE BAND

Commander Charles Brendler, U.S.N., Conductor

- TULSA Don Gillis

THE TEXAS ALL STATE ORCHESTRA

Dr. Joseph E. Maddy, Conductor

- PRILUDE TO DIE MEISTERSINGER Richard Wagner
- SYMPHONY No. 1 IN E MINOR
"NORDIC" Second Movement Howard Hanson

—SIDE 3—

THE TEXAS ALL STATE CHORUS

Roger Wagner, Conductor

- HE IS BORN arr.: Roger Wagner
- VERE LANGOURES Vittoria
- AVE MARIA Rachmaninoff
- HEAR THE MURMURING WATERS Monteverdi
- ALLELUIA arr.: Roger Wagner
- SIX CHANSONS Hindemith
 - The Doe Winter
 - A Swan Orchard
 - Springtime Since All Is Passing
- WASSAIL SONG Vaughan Williams
- SOON AH WILL BE DONE arr.: Dawson

—SIDE 4—

THE TEXAS ALL STATE ORCHESTRA

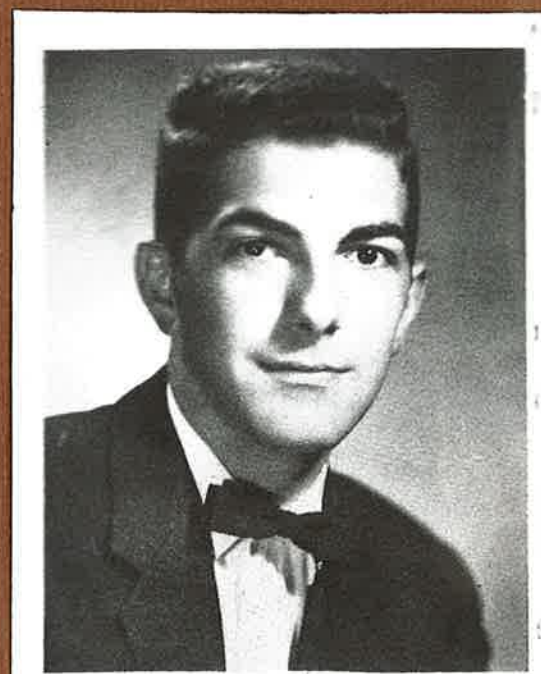
Dr. Joseph E. Maddy, Conductor

- CAPRICCIO ESPAGNOLO N. Rimsky-Korsakow

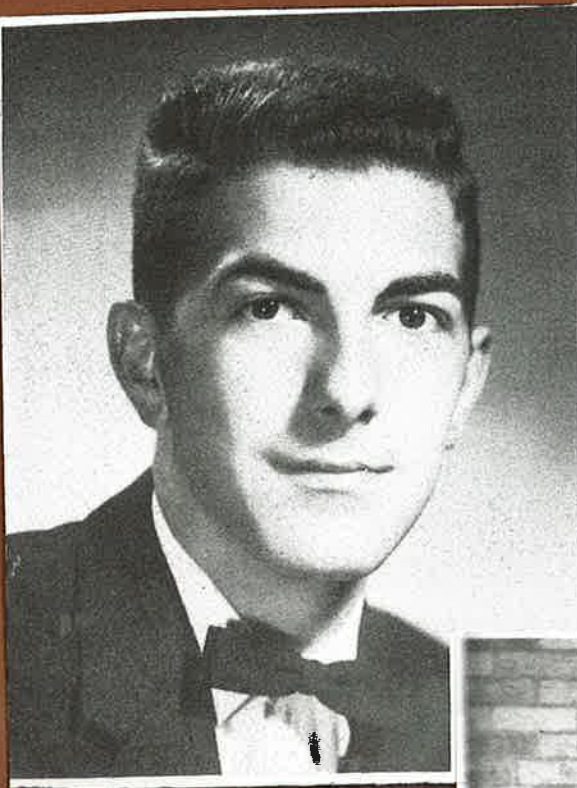
THE ALL STATE COMBINED BAND, ORCHESTRA AND CHORUS

Roger Wagner, Conductor

- SONG OF DEMOCRACY Howard Hanson



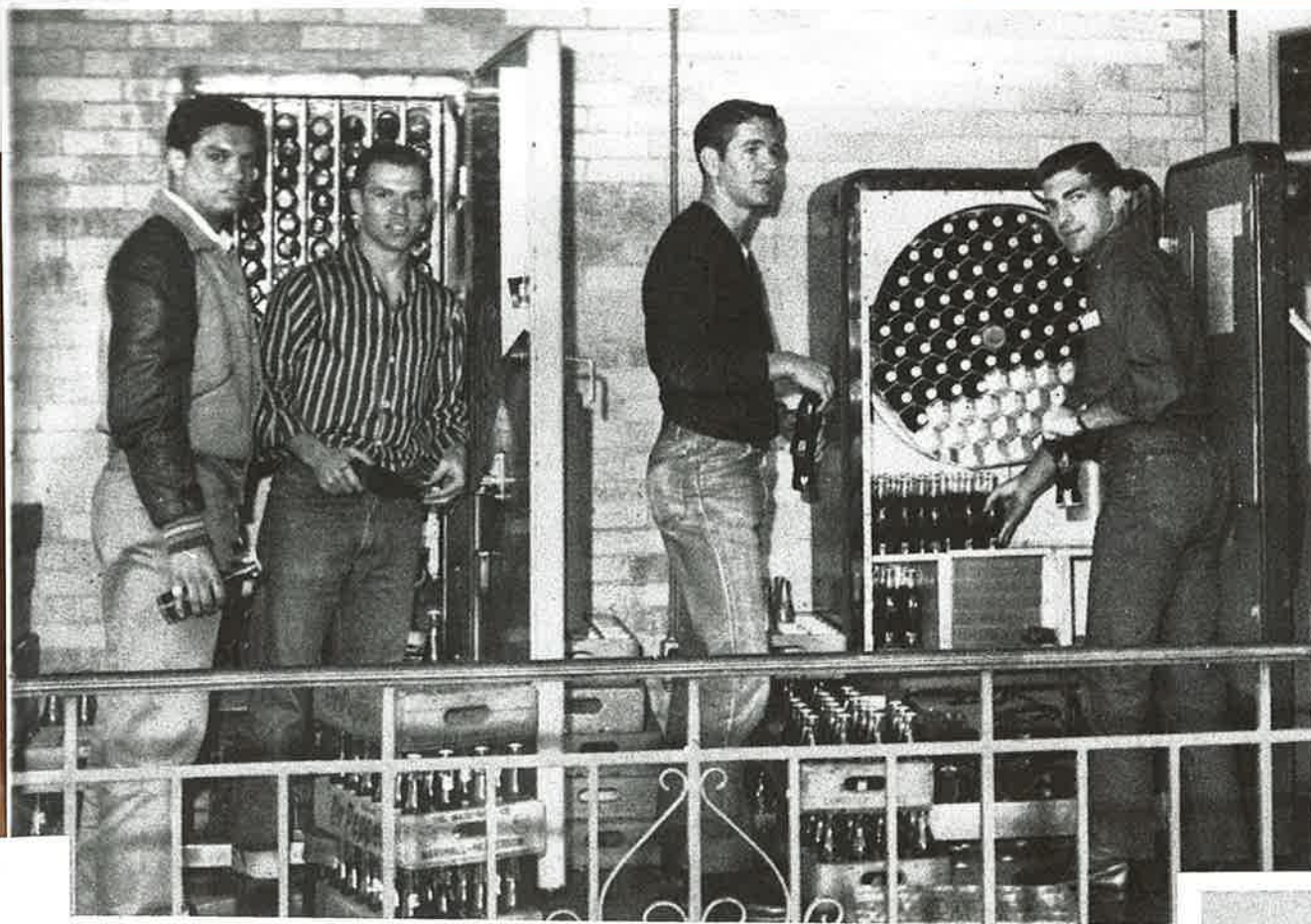
DON LAWLER
All-State Band



DON LAWLER

SENIORS

Band I, II, III, IV
 Orchestra I, II, III, IV
 All-Region Band II, III, IV
 All-State Band II, III, IV
 Solo and Ensemble Contest II, III, IV
 Choir III, IV
 Library Club I
 Class President III
 District Typing Contest III
 Most Likely to Succeed IV
 Panther's Paws Staff IV
 Annual Staff III
 Editor of Annual IV

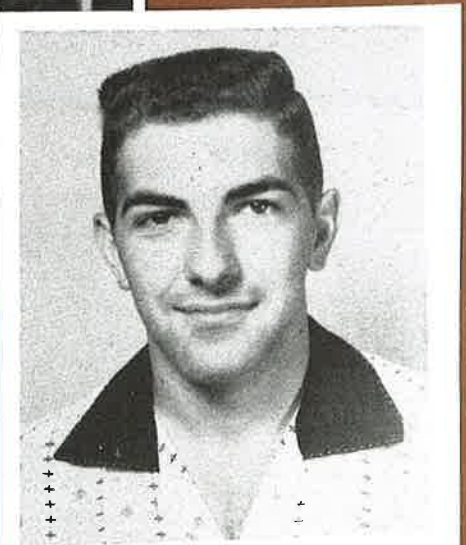


Seniors, Jim Bob McCullough, Sonny Teaff, Gene Clark, and Don Lawler fill up the drink machines. Operating cold drink machines is one way the seniors make money for their trip.

Don Lawler, the editor of the '58 Panther, and Sarah Skinner, co-editor, became head roustabouts as soon as last year's final copy was in the mail. They took over the file, the typewriters, and the yearbook shelves in a corner of the English room as a base of operations and this year's annual began to take shape.

The staff has a regular seventh period class for work; however, they often work after school on layouts, picture planning, copy, and such other assorted tasks as come to staffs of yearbooks.

THE PANTHER STAFF



DON LAWLER
Editor

Stephen F. Austin State University
1960-63

Kappa Kappa Psi

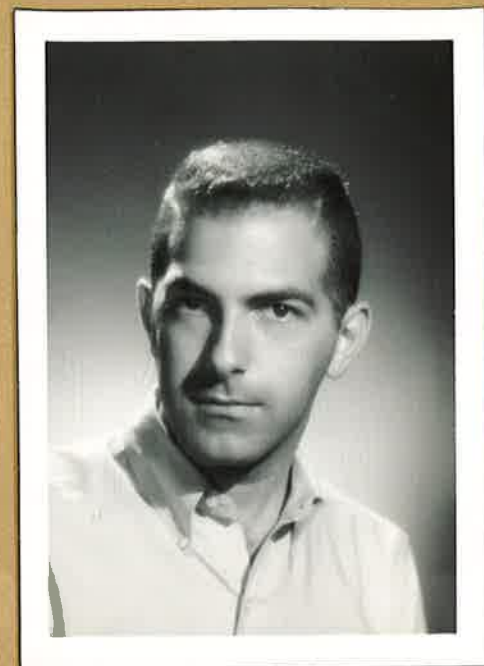
Honorary Band Fraternity



This is to certify that
Donald V. Lawler
is hereby granted

Life Membership
in Kappa Kappa Psi
by The Grand Chapter of
Kappa Kappa Psi
MAY 7, 1961

Robert H. Rens
NATIONAL EXECUT



STEPHEN F. AUSTIN STATE COLLEGE
NACOGDOCHES, TEXAS

STUDENT RECITAL

February 26, 1963
3:00 P.M.

Fine Arts Auditorium

Suite for Trumpet-----Purcell
Darrell Holt, trumpet

Vittoria-----Carissimi
Ralph Dowden, tenor

Lily Polka-----Vandercook
Jerry Fagan, baritone horn

Ode for Trumpet-----Reed
James Covington, trumpet

Bride of the Waves-----Clark
Johnnie McWilliams, baritone horn

Yours Rudimentally-----Stone
Don Lawler, snare drum

Prelude & Fugue in F# minor-----Bach
Janet Wilson, piano

ACCOMPANISTS: Pamela Mills
Patsy Nutt
Janet Wilson



Stephen F. Austin State College

"THE COLLEGE AMONG THE PINES"

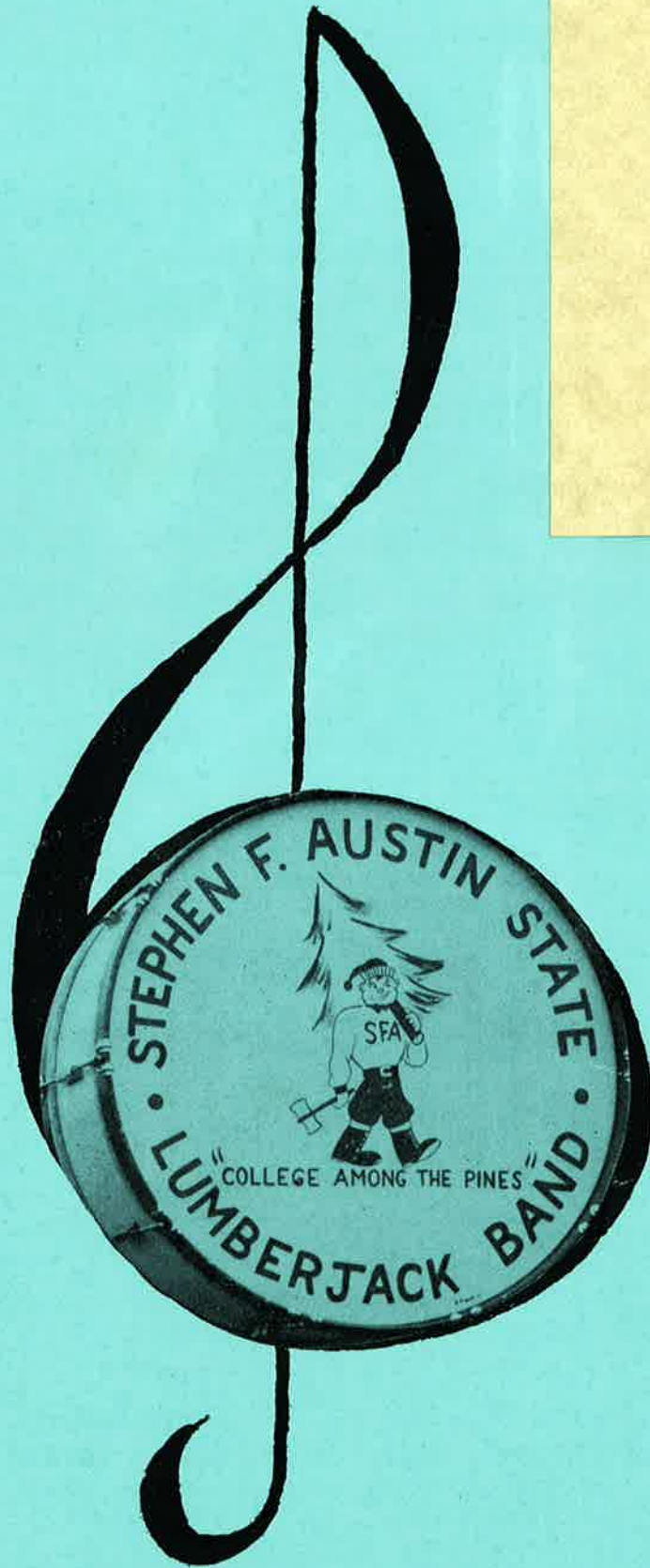
NACOGDOCHES, TEXAS

Lumberjack Band





LUMBERJACK
BAND
IN
CONCERT



on the campus

Sunday Afternoon

April 8, 1962

3:00 p.m.

THE DEPARTMENTS OF ART, MUSIC,
PHYSICAL EDUCATION AND SPEECH

Stephen F. Austin State College

present



by
MEREDITH WILLSON

MAY 2 and 3
1963

L. E. GRIFFITH, JR. AUDITORIUM
Nacogdoches, Texas



THE ORCHESTRA

STRINGS

Mr. Raymond Rose
Mrs. Dan Brazil
Mrs. Ray Sargent
Dr. W. I. Layton
Mrs. W. I. Layton
Basil Barbee

BRASS

Val Rose
Darrell Holt
Raymond Thomas
Carter Cook
James Blacksher
Wilmer Burr
Charles McDonald

WOODWINDS

Gilbert Fernandes
Billy Pool
Nancy Newkirk
James Hagood

PERCUSSION

Edward Lehr
Don Lawler

PIANO

Mrs. Carolyn Miller



THE MUSIC MAN is largely a recapitulation of things that happened to Meredith Willson and about him in Mason City (which he calls "River City") when he was ten years old. The action takes place in the Summer of 1912.



PRODUCED BY SPECIAL ARRANGEMENT WITH
MUSIC THEATER INTERNATIONAL

BAND INSTRUMENTS USED BY BOYS BAND AND WINTHROP:
COURTESY OF ELLIS MUSIC CO., LUFKIN



LUMBERJACK BAND IN CONCERT

Griffith Auditorium
on campus

Sunday Afternoon

April 21, 1963

3:00 p.m.

BARITONES

John Beene, Nacogdoches
Gerald Fagan, Marshall
Jim Lassiter, Bryan
Johnnie Dale McWilliams, Lufkin
Rodney Sullivan, Nacogdoches

TUBAS

James Henson, Forney
•• Charles McDonald, Spring Hill
Bob Sarles, Port Neches
Bradley Starr, Elkhart
Gerald Toney, Kilgore

PERCUSSION

• Linda Eldridge, Timpson
•• Don Lawler, Spring Hill
Edward Carroll Lehr, Athens
Ronald Reaves, Denton
Dickie Sherrill, Richardson
Jane Shelton, Houston

- TAU BETA SIGMA
- KAPPA KAPPA PSI
- * TWIRL-O-JACKS



Jimmie M. Hudgins, Director
Gilbert R. Fernandes, Assistant
Jerry Hanszen, Drum Major
Janet Gray, Head Twirler

m of musical ex-
its institution, and

prical Commission
ersity, founded in
Republic of Texas.
pus of the Nacog-
The University
1904 when the
hool District.

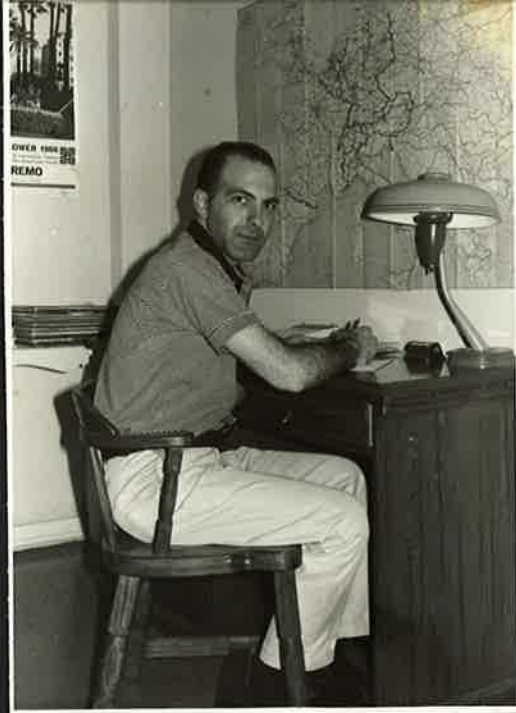
US Air Force Bands
Sheppard AFB, Texas
Ramstein AFB, Germany
1963-67



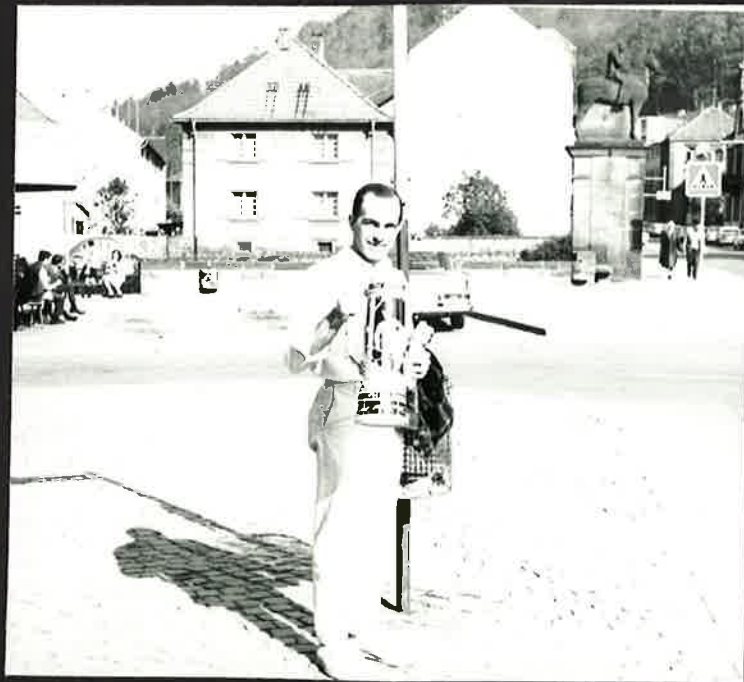


Military Parades – May, 1966
(above) Chateauroux AFB, France
(left) West Berlin, Germany





**Barracks Life – Leisure Time
Ramstein AFB, Germany
1995-97**



Forest Park Junior High Band
 Longview ISD
 1967-69



FOREST PARK BAND WINS SWEEPSTAKES AWARD – Forest Park Junior High Principal Raymond Wray accepts Sweepstakes Trophy from Band President Bill Edwards and Drum Major Debbie Stevens, as Don Lawler, director, observes presentation. The Sweepstakes Award for First Division Ratings in UIL Marching, Concert and Sight Reading was the first to be won by a Forest Park Band since its organization 12 years ago.

FOREST PARK JUNIOR HIGH
 BAND CONCERT
 March 7, 1968 - 7:30 p.m.

- Santa Cecilia March Radaelli
Arr. by Richard Brittain
 - Russian Choral and Overture Adapted & Arr. by Merle J. Isaac
 - Highlights from "The King and I" Rodgers & Hammerstein
Arr. by C. Paul Herfurth
 - Early English Suite W. Duncombe
Arr. by Walter Finlayson
 - Trumpet Menuet
 - Sonatine
 - Menuett
 - Hunting Jig
 - Lara's Theme from "Doctor Zhivago" Maurice Jarre
Arr. by Ken Whitcomb
 - Spanish Flea Julius Wechter
Arr. by John Kinyon
 - El Grucho Ted Mesang
 - Spanish March
- *****
- Director Don Lawler

**Pine Tree Junior High Bands
1970-79**



**PINE TREE JUNIOR HIGH
BANDS**

in Concert

Paul Stroud - Don Lawler
Directors

THE
PINE TREE INSTRUMENTAL DEPARTMENT
Presents

The High School Band and Seventh Grade Band

- IN -

CONCERT

May 21, 1971 7:30 P. M.

JACK ENGLAND - PAUL STROUD - DON LAWLER
DIRECTORS



PAUL STROUD
Jr. High Band Director

JACK ENGLAND
Director of Instrumental Music

DON LAWLER
Assistant High School Director

TEXAS MUSIC EDUCATORS ASSOCIATION
REGION IV

JUNIOR HIGH ALL-REGION BANDS
in Concert

Class C All-Region Band
BOB PARSONS, Clinician
Richardson High School, Richardson, Texas

Class CC-CCC All-Region Band
PAULA CRIDER, Clinician
Crockett High School, Austin, Texas

PTJH Bands Schedule Spring Concert Thursday

The Pine Tree Junior High bands will present their annual spring concert Thursday, April 5, in the Pine Tree School auditorium on the Junior High campus at 7:30 p.m.

There will be no admission charge.

The Eighth Grade Band will open the concert with a K. L. King march, "Freedom City," followed by "Balladair," "Green Leaves of

Summer," "Traces," and "I Believe In Music." Both "Freedom City" and "Balladair" are UIL band contest selections.

The Ninth Grade Band will perform its UIL contest selections "The Mad Major March," by Kenneth Alford, "Chorale and Shake Dance" by John Zdechlik, and "First Swedish Rhapsody" by Eric Leidzen. The band will conclude with a medley of

George Gershwin music and Barry Manilow compositions.

Both bands recently participated in the UIL Concert and Sight Reading Contest held at the L. L. Williamson Auditorium at Spring Hill High School and received the highest ratings for superior performance on these concert selections.

All interested persons are welcome.



RECEIVING AWARDS at the Pine Tree Junior High band concert last week were, from left, Allan Strickland, best musician; Don Lawler, band director who was presented

a new podium from his students; and June Carter, best musician. (GREGGTONION PHOTO)

**C Band Chairman
LAWLER**
e Junior High
ngview



Their Own Kind of Music

This snare drum ensemble, from left, Jack Rogers, Steve Capps and Paul Atkinson, earned additional honors for the Pine Tree Junior High School Band. At an end-of-school invitational solo and ensemble contest, sponsored by the Jacksonville High School Band, the trio was named outstanding snare drum performers. Judges also named PTJHSers Lisa Gannon, Raymond Sage and Karl Killian to solo honors. Capps placed in both divisions. The junior musicians are directed by Don Lawler.

Thursday, May 6, 1976



Pine Tree Photo

Secret Service Checks Band

An agent for the United States secret service checks members of the Pine Tree Junior High band after they arrived at Gregg County airport to entertain President Gerald Ford. The band was no

exception, however, as everyone who entered the airport grounds had to be checked by the agents. Pine Tree was the only junior high band selected to play for the president at the airport.





Percussion Section



TMEA - UIL REGION IV

presents

**ALL-REGION JR. HIGH BANDS
(Class CCC-CC)**

in concert

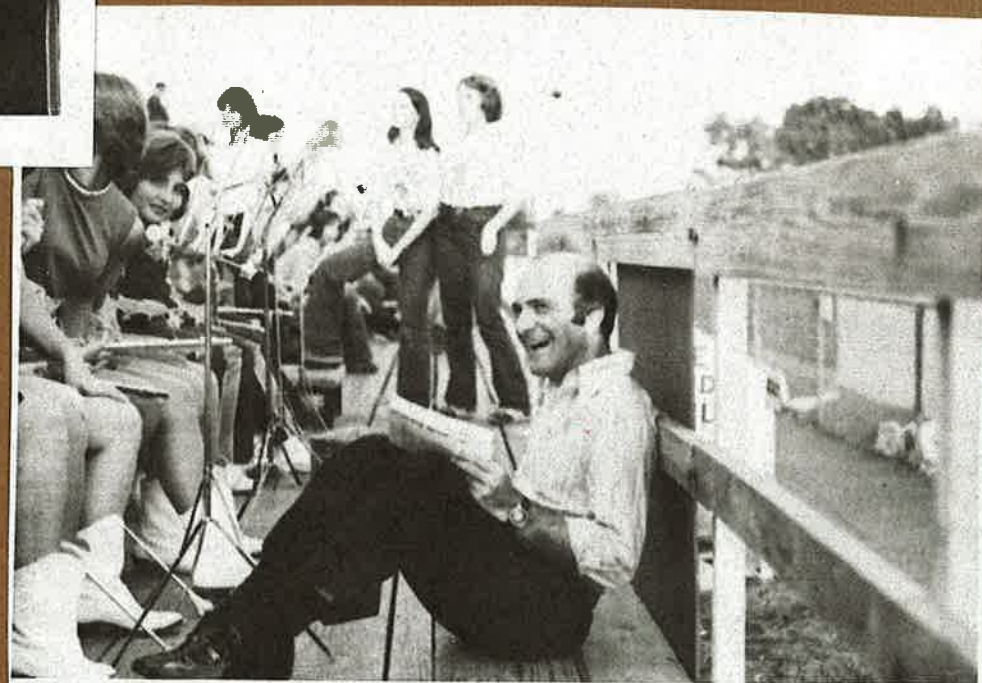
GUEST CLINICIANS

REGION BAND I

Dick Floyd
Director of Bands
Baylor University - Waco

REGION BAND II

Henry Schraub
Supervisor of Music
Birdville ISD - Haltom City



HOST

Pine Tree Jr. High Band
Don Lawler, Director

PINE TREE SCHO

January 15, 1977



August 9, 1977

DEPARTMENT OF MUSIC

Pine Tree Jr. High Band
Mr. Don Lawler, Director
Longview, Texas

Dear Pine Tree Band:

Congratulations to you and your fine director on your recent selection among the top five CCC junior high school bands in the state of Texas. This is an honor that certainly reflects the quality and effort of all concerned with the Pine Tree band program.

After visiting your rehearsal last year I was certain then that this honor would be forthcoming during the summer.

Again, best wishes, and keep up the fine work. We in the East Texas area are pleased to be represented so well.

Sincerely,

Mel Montgomery
Mel Montgomery
Director of Bands

MBM/jc



Pine Tree Junior Band Presented Award

Pine Tree Junior High School principal Tim Sonnenberg, right, presents a certificate to junior high band director Don Lawler on behalf of the Texas Music Educators Association. The PTJHS band was named third best band among junior high bands in the state by the Texas Music Educators for the 1976-77 school year. The certificate designates the junior high band as an Honor Band.

Texas Music Educators Association

Honor Band Finalist

Pine Tree Junior High Longview, Texas

Class 888 Year 1976-77

Don Lawler
Director

TEA commends the group for excellence in musical performance

Ninth Grade Band

FOLK SONG SUITE R. Vaughn Williams

- I. March - "Seventeen Come Sunday"
- II. Intermezzo - "My Bonny Boy"
- III. March - "Folk Songs From Summerset"

ZUEIGNUNG R. Strauss

This composition is a poetical tone poem. The text of the art song expresses dedication to a loved-one. Richard Strauss, one of Germany's greatest composers, and a master of orchestration, created tone-poems in which the orchestra became one instrument capable of expressing human emotions.

QUICK MARCH - "THE VEDETTE" K. J. Alford

A favorite march of the military bands of Great Britain. The composer is considered by many to be that country's John Phillip Sousa.

TV's SUPERHITS Arr. - B. Lowden

- I. Welcome Back
- II. Making Our Dreams Come True
- III. Happy Days

MALAGUENA E. Lecuona

-From the "Andalucia Suite" Arr. - J. Cacavas
A brilliant contribution to the world of music that bridges the gap between concert and popular repertoire.

**Spring Hill High School Band
1979-81**

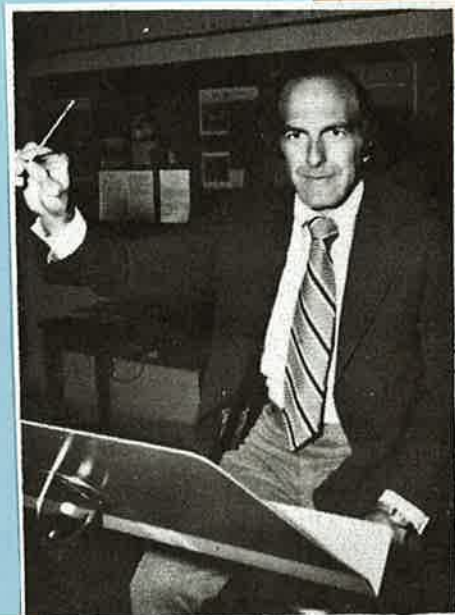
Spring Hill High School Band

in concert

Don Lawler, Director
Mike Bullock, Assistant Director
David Hitt — Student Teacher
SFA Senior - DeSoto

April 28, 1981 - 7:30 p.m.
L. L. Williamson Auditorium

C. C. Dowell
Superintendent



Mr. Don Lawler
Bands

Don Lawler Is Named Director At Spring Hill

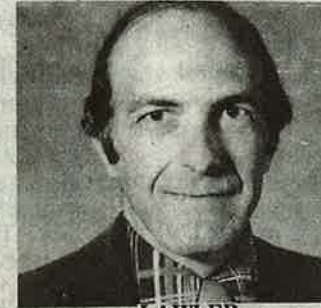
SPRING HILL—The former Pine Tree Junior High School band director has been named high school band director here.

He's Don Lawler, who taught nine years in the Pine Tree Independent School District and spent six of those years as junior high band leader.

Lawler succeeds James Fort, high school band director at Spring Hill since 1962, who requested to be reassigned as Spring Hill Junior High band director.

Pine Tree bands under Lawler have won many University Interscholastic League Sweepstakes awards and Best In Class honors during Stephen F. Austin State University parades.

His junior high band in



LAWLER

1977 came in third in state-wide honor band competition for AAA junior high schools.

Lawler graduated from Spring Hill High, attended Kilgore College and earned his BA degree in business and music education — and masters in music — from SFA. He spent four years in the U. S. Air Force Band,

performing throughout Europe.

The new director has played in the Longview Symphony Orchestra and was business manager of that group since its 1968 beginning.

He also is assistant director of SFA summer band camps, where he handles administrative and financial matters the camps' 1,300 students in a three-week period.

Lawler is a member of Phi Delta Theta Fraternity, Kappa Kappa Psi national honorary band fraternity, Texas Music Educators Association, Texas Bandmasters Association, Four-States Bandmasters Association and Texas Professional Educators.



**SPRING HILL
HIGH SCHOOL BAND**

Marching to the beat of tradition

Band veterans teach fundamentals of military-style marching

BY JIMMY ISAAC
jisaac@longview-news.com

Waymon Bullock hopes traditional military-style marching bands don't disappear.

Bullock, 73, and other retired band directors aren't resting on their hopes, either. Through workshops and contests geared specifically for military styles, directors who spend their summer and fall months teaching counter-marches, to-the-rear and parade rest commands say their efforts can keep interest in the tradition for years to come — and ensure that a younger generation of directors can teach proper military marching fundamentals.

Bullock presided over Thursday's military-style marching band drill design workshop at Kilgore College. Region 7 Education Service Center sponsored the event, organized by Union Grove High School Band Director Mike Melton and retired band director Don Lawler.



Les Hassell/News-Journal Photo

Waymon Bullock, left, and Don Lawler speak to area band directors Thursday about military-style marching bands at Kilgore College.

The workshop centered on techniques in planning, organizing and charting military-style drills and music for football halftime shows and competitive activities.

More than one-fourth, if not most, of East Texas' high school bands march military style, which involves bands that play military-style music, march mostly in straight-line formations and have similar instrumentation.

As most major college and university bands employ the corps style, which involves marching in a fluid roll to keep musicians' torsos still and employs moving percussion sections and auxiliaries like flags and mock weapons, most high school band programs have followed suit.

"(Military-style workshops) help the young guys to know how to do it, because if they came from different

areas of the state to this area, then they wouldn't know anything about it," said Bullock, who directed Lufkin High School's band for 23 years. For the past nine years, he's served as consultant for the Nacogdoches High School band.

"Corps style is mostly asymmetrical, where military is all symmetrical, in an angle," Bullock said. "So, teaching how to move blocks and forms like that is what we're primarily interested in teaching, and how to fit the drill to the music."

Gilmer Junior High Band Director Brandon Garmon, 30, said young band students are aware of the two marching styles by the time he sees them as sixth-graders, thanks to the Yamboree Marching Contest each October in Gilmer that attracts high school bands from throughout East Texas.

"They understand that what we do is different (from corps-style bands)," Garmon said. "Whenever we perform at marching contest and they see that

See MARCHING, Page 4B

they're able to do some of the same stuff that the high school kids are doing, it gives them confidence."

Lawler retired as Pine Tree High School's band director in 1995 after 14 years, and now teaches percussion instruments part time at Spring Hill.

Lawler and Bullock are members of the National As-

sociation of Military Marching Bands, a group formed in 1979 by 11 East Texas band directors concerned that military style could become a lost art amid the spread of corps bands.

When Drum Corps International held competitions and exhibitions throughout Texas in the 1970s and 1980s, many high school directors imitated the pattern.

Other band programs, like Longview, Henderson and Carthage, held strongly and firmly to the traditional military style, which led to some controversy between the two styles, Lawler said.

"Now, all directors respect what each other is doing," Lawler said. "It's just the preference of the director and maybe the community and the school district."

6th Annual Military Marching Contest

Sponsored by

National Association of Military Marching Bands

Hosted by

Texas A & M University
with a special performance by
The Fightin'
Texas Aggie Band

NOVEMBER 6, 1993

National Association of Military Marching Bands

certifies that

Don Lawler

is a member in good standing, and is
entitled to all rights, privileges and cooperation
afforded by the association

SEPTEMBER 15, 1979

Date

Waymon Bullock
President

Don Lawler
Secretary-Treasurer



MEMBERSHIP



CERTIFICATE

Phi Beta Mu

NATIONAL SCHOOL BANDMASTER FRATERNITY

HONORS

AS AN Don Lawler MEMBER

AND IS ENTITLED TO ALL THE RIGHTS AND PRIVILEGES THEREBY CONFERR



Robert R. Hans
PRESIDENT

Robert G. ...
SECRETARY

February 16, 1980

PHI BETA MU

National Bandmasters
Fraternity

Edited by
J M DAY



The SCHOOL MUSICIAN/DIRECTOR & TEACHER is the Official Organ of Phi Beta Mu.

Annual Meeting News Of Alpha And Tau Chapters

Alpha Elects New Officers

OFFICERS AND BOARD MEMBERS were elected and seven new members were initiated at the annual meeting of Alpha Chapter on February 14, 1980. The new members are: Jim Sharples, Ray Lichtenwalter, Larry Burks, Wendell Gideon, Jim Keene, Don Lawler, and Bill Moffit.

Newly elected to office were: President—Fred Stockdale (Bridgeport, Texas); and Vice-President—Durward Howard (Temple, Texas).

Board members for the next two years are: Dr. Charles Traylor (Abilene, Texas); James Mallow (Brady, Texas); Rodney Klett (Georgetown, Texas); and Jim VanZandt (Fort Worth, Texas).

Tau Welcomes Six New Members

The Tau Chapter of West Virginia met March 29, 1980, for its annual business meeting and breakfast that was held during the West Virginia Music Educators Conference. President John L. Puffenbarger presented the past-president's pin to Glenn Goodwin and welcomed the following six new members into the fraternity: Greg Ken-

nedey, Felice Joregeson, Harry Faulk, David Wilson, Ron Rose, and Nick Nunoz.

Tom Reed, another past president, presented Charles Yeago (Wahama High School) the Bandmaster of the Year award during the WVMEA All State High School Band, Orchestra, and Chorus concert.

New officers for the year are: President—Jack Basil; Vice-President—John Puffenbarger; Secretary—Treasurer—Harold Gothard; and Board of Directors—Ed Hood and Tom Reed.

The Tau Chapter met during the West Virginia Bandmasters Summer Clinic for a social event.

Dr. Donald E. McCathren (founder of Tau Chapter), Professor of Music at Duquesne University, and Nils Hovey attended meetings the past year.

The members who were present at this year's meeting were: Al Frey; Fred Ross; Jack Hammrick; Tom Reed; Charles Gorby; Jack Basil; John Puffenbarger; Harold Gothard; Linda Kaye Ward; Al Staton; Ken Gleason; Phil Rossano; Barry Vingle; Glenn Goodwin; Ed Hood; Gerald Foster; Mike Roberts; and Bill Duer, a charter member who is retiring from teaching in Ohio.



Initiated at the annual meeting of the Alpha Chapter on February 14, 1980, were the following (left to right): Jim Sharples (Fort Worth, Texas); Ray Lichtenwalter (University of Texas, Arlington); Larry Burks (Plainview, Texas); Wendell Gideon (Stephenville, Texas); Jim Keene (East Texas State University, Commerce); Don Lawler (Longview, Texas); and Bill Moffit (University of Houston, Texas).



Laird Middle School Bands
 Kilgore ISD
 1981-89



*EIGHTH GRADE
 PERCUSSION ENSEMBLE
 DON LAWLER, DIRECTOR*

*CARTHAGE HIGH SCHOOL
 MAY 7, 1987*

Snare Drum Solos		
CAPTAIN JACK - - - - -	Wm. F. Prentice	
	Carroll Dase	
DRUMMER BOY 2/4 - - - - -	Wm. F. Prentice	
	Bronte Elder	
Xylophone Solo		
HUNGARIAN DANCE, NO. 5 - - - - -	Brahms/Quick	
	Shane Colley	
	accompanied by Scott Parkman	
Snare Drum Trio		
FLINGING IT THREE-FOLD - - - - -	R.W. Buggert	
	Shane Colley	
	Carroll Dase	
	Scott Parkman	
Timpani Solo		
SCHERZO FOR THREE TIMPANI - - -	Mitchell Peters	
	Scott Parkman	
Percussion Ensembles		
THREE EPISODES - - - - -	John O'Reilly	
	Shane Colley	Michael Mapps
	Carroll Dase	Scott Parkman
	Bronte Elder	
WILLIAM TELL OVERTURE - - - - -	Rossini/Houllif	
	Shane Colley	Gene Lowery
	Carroll Dase	Michael Mapps
	Bronte Elder	Scott Parkman



Parkman All-State third straight year

One, two, three. Count them. Three times Kilgore High School junior Scott Parkman has tried out for All-State Band.

One, two, three. Count again. Three times the young musician has been seated in the prestigious group.

For the third consecutive year, Parkman has been picked for the honor in competitive auditions held this year across the state at district, region and area levels.

He will perform with the Texas All-State Band in San Antonio on Saturday, Feb. 10, as part of the 1990 Texas Music Educators Association Convention meeting.

Scott is a private student of Don Lawler and plays at school under the direction of Glenn Wells, who is a member of the Texas Music Educators Association, a 5,400 member group with headquarters in Austin.

Last summer this talented musician attended the National Music Camp at Interlochen, Mich., where he was in the World Youth Symphony Orchestra and the Symphonic Band.

Also at Interlochen, he participated in the percussion ensemble

and advanced conducting.

Young Parkman says that besides percussion, he has a great interest in conducting, and this spring will conduct in the Stephen F. Austin Symphonic Band's conducting symposium.

He has set his sights on auditions for the All-State Orchestra next year, and he plays in the Longview Youth Symphony Orchestra.

Parkman also performed during a concert of East Texas Community Concert Band last year.

The son of Mr. and Mrs. Bob Parkman, he has taken piano for 10 years and has won numerous competitions and awards.

At Kilgore High School, he is a member of the student council and a board member of KYSSSED (Kilgore Youth Stand Superior Eliminating Drugs).

He is active in church activities at St. Luke's United Methodist Church.



Parkman band all-stater second year in a row

By JACKIE TOLBERT

As a baby, Scott Parkman probably cried in rhythm. That would account for the fact that he is such a talented musician.

The Kilgore High School sophomore was recently selected to the All-State Band for the second consecutive year. He was first picked for the group last year as a freshman — quite an accomplishment.

"When I was a freshman, I was shocked when I was selected. This year my selection was exciting but not shocking," said the young musician.

"There were fewer than five freshmen from the entire state picked for the band the first year I was selected," said Parkman.

As a member of the All-State Band, Parkman, who is a percussionist, will perform in San Antonio on Saturday, Feb. 11 as part of the 1989 Texas Music Educators Association Convention. His band director is Mike Geddie.

For All-State auditions, Parkman played five etudes (musical compositions for a solo instrument designed to develop the performer's technical ability) — two on snare drums and one on each of the following: mallet, bass drum and triangle.

Parkman became interested in band and in playing percussion instruments as a sixth grade student. He excelled in the band and, when he was a seventh grader played in the Red Band, the more advanced of the middle school bands.

"My middle school band director, Don Lawler, and my parents really encouraged me," said Parkman.

Most afternoons find Scott in practice sessions. One day a week he has percussion lessons with Lawler.

"We are both perfectionists and we work well together," Parkman said. Parkman said that he felt that he

might have a special kind of talent when he attended solo and ensemble contest in both the seventh and the eighth grades and was picked for first chair in stiff competition.

The son of Mr. and Mrs. Bob Parkman, the percussionist said that he plans to try out for the All-State Orchestra next year.

Why? "It's different," he explains, "and I want more experience in orchestra before I graduate."

As an "All-Stater," Parkman has qualified for a number of special music programs.

Last summer, he attended band camp at the University of Texas at Austin where he played in the Honor Wind Ensemble, comprised of All-State Band members from the 1987-88 school year.

"Because I was an All-Stater, I was invited to attend the camp," explained Parkman.

He was also a member of the Sea World of Texas All-Star Marching Band, made up of 106 top high school musicians.

"Many people say that the Sea World band is the best high school marching band in the nation," he said. Parkman performed with the group in the Cotton Bowl.

Explaining the band's selection process, he said that he sent out an audition tape. The judges liked the tape and came to Kilgore to interview him. The interview went well and Parkman was given the nod.



SCOTT PARKMAN

While music is certainly Scott's forte, his school activities are varied. He is a member of the student council, Future Teachers of America, Junior Historians and KYSSSED.

He attends St. Luke's United Methodist Church where he plays piano for special events.

ACM
AMERICAN CENTURY MUSIC

Scott Parkman

ACM founding Artistic and Executive Director, Scott Parkman is a conductor of remarkable versatility and exemplary musicianship, widely recognized for the richness and depth of his performances. Mr. Parkman has performed most recently with the Heidelberg Philharmonic, New Zealand Symphony, St. Louis Symphony, and the Hong Kong New Art Camerata. Motivation for establishing ACM grew from Mr. Parkman's desire to examine and perform the hundreds of works by 20th century American classical composers - music that is generally underrepresented on today's concert programs.



Texas Music Educators Association

presents

The 2006 Texas
All-State Philharmonic Orchestra

SCOTT PARKMAN, Conductor

THE LUMBERJACK BAND ALUMNI ASSOCIATION

STEPHEN F. AUSTIN STATE UNIVERSITY
NACOGDOCHES, TEXAS



“Chips off the 'Ol Block”

Don Lawler

Charter MEMBER
1981 - 1982

Jim Howard
PRESIDENT

Mel Montgomery
DIRECTOR OF BANDS

Dear Don,

It has been such a good feeling these last several months to know that our son has been under your protective wing. Thank you for sharing your home and your professional experiences with him. We wish you a very Merry Christmas & a happy & successful new year with a "fledgling" Bullock on your team. Love, Jay & Waymon



Thumbs up to you!
You're really swell
and you deserve
applause as well.

Well here it is! I would like to thank you for all that you have given me.

• You have guided me throughout my musical career and I am very grateful. You have taught me everything I know and once I get my degree in music, I hope I am as talented as you are. I blame you for all of my success. Thanks for being there for me.

Love - Max McRuiz

Dear Mr. Lawler,

I don't know exactly how to say this, but I'm so glad I've had you as a band director while I've been at MLMS! In 7th grade I thought I didn't mean much to the band because of how much I contributed. But this year I've had lots more encouragement on my part which has helped 100 times more. I feel I've really learned alot this year while playing my instrument. Plus, the good thing about it is I enjoy it! Playing the flute is a challenge that I have grown to love! If it wasn't for you I don't think I would've made it. Each time I needed help on reading music, you were there! Thanks alot! I've really enjoyed this year and will always remember it as a highlight of my life.

Thanks,
Misty Muncy



UIL
UNIVERSITY INTERSCHOLASTIC LEAGUE
MAKING A WORLD OF DIFFERENCE

**MIDDLE SCHOOL - JUNIOR HIGH
CHOIRS**

March 31, 2011 - Mt. Pleasant HS
Luke Dean, Host

HIGH SCHOOL CHOIRS

April 5-6, 2011 - Canton HS
Michael Senter, Host

Don Lawler, Region IV UIL Music Contest Director

REGION IV UIL MUSIC EXECUTIVE COMMITTEE
Dan Rose, Chair
Margaret Davis
James Dawson
Gary VanDeaver
Kathy Allen
Stacy Bryce
Jody Clements

UIL
UNIVERSITY INTERSCHOLASTIC LEAGUE
MAKING A WORLD OF DIFFERENCE

**Regions IV & XXI
ORCHESTRAS**

**CONCERT AND
SIGHTREADING CONTEST**

UIL
UNIVERSITY INTERSCHOLASTIC LEAGUE
MAKING A WORLD OF DIFFERENCE

**REGION IV
CONCERT & SIGHTREADING
CONTEST**

A-AA HIGH SCHOOL BANDS
April 13, 2011 - Gladewater HS
Rhonda Cates, Host

A-AAAA HIGH SCHOOL BANDS
April 13-14, 2011 - Mt Pleasant HS
Dick Eckstein, Host

Don Lawler, UIL Music Contest Director

REGION IV UIL MUSIC EXECUTIVE COMMITTEE
Dan Rose, Chair
Margaret Davis
James Dawson
Gary VanDeaver
Kathy Allen
Stacey Bryce
Jody Clements
Hawkins ISD
Pleasant Grove ISD
North Lamar ISD
New Boston ISD
Hooks ISD
Sabine ISD
Kilgore ISD

**The University
Interscholastic League
of Texas
Region IV
MARCHING BAND
COMPETITION**

November 2, 3, 1985

LONGVIEW, TEXAS

John Kunkel, Contest Director
Don Lawler, Region IV UIL
Executive Secretary

**Region 4 UIL Music
Executive Secretary
1982-2011**



DON LAWLER
UIL REGION IV EXECUTIVE SECRETARY



L
J
B
A
A

In Sincere Appreciation

Don Lawler

For Service
and Dedication as
President



Lumberjack Band Alumni Association

1983 - 1984



Tyler Independent School District

**All City
Middle School**

Don Lawler

Director

Laird Middle School Bands, Kilgore ISD

Mr. Lawler is a native of Longview, Texas — attended Kilgore College — graduated from Stephen F. Austin State University, Nacogdoches with a Bachelor's Degree in Business Administration and Music Education. Received Master's of Fine Arts Degree in 1973. Spent four years in United States Air Force Band — two of them in Germany, performing throughout Europe.

Began teaching experience in 1967, Forest Park Junior High, Longview. Taught nine years at Pine Tree ISD — six of them as Director of Junior High Bands. Two years the Junior High Band placed in the top five bands in statewide Texas Music Educator's Honor Band Selection Competition.

Following two years as Director of Spring Hill High School Band, Mr. Lawler is Director of Band at Maude Laird Middle School, Kilgore. Bands under Mr. Lawler's direction have consistently won the coveted UIL Sweepstakes Award for superior performance in Marching, Concert and Sight Reading competitions.

Member of Texas Music Educators Association, Texas Bandmasters Association, Kappa Kappa Psi and Phi Beta Mu National Band Fraternities, Texas Association of Professional Educators. Currently serving as Director of Region IV UIL Music Contests, and President of the Stephen F. Austin Lumberjack Band Alumni Association.



Music Festival

May 10, 1984

7:30 P.M.

**John Tyler High School
Gymnasium**

P R O G R A M

PERCUSSION ON THE PROWL -----	Anslinger
Ensemble	
HI HO SIMPSON -----	Abel
Michael Medford, Kilgore High School	
Snare Drum Soloist	
SCHERZO FOR THREE TIMPANI -----	Peters
Billy Byrd, Union Grove High School	
Timpani Soloist	
MORRIS DANCE -----	Kraft
Chris Nichols, Hughes Springs High School	
Multiple Percussion Soloist	
HUNGARIAN DANCE NO. 5 -----	Brahms/Quick
Billy Byrd Michael Medford	
Kate Mallari Chris Nichols	
Keyboard Soloists	
TRILOGY FOR SOLO PERCUSSIONIST -----	
Aaron Dickinson, Marshall High School	
Multiple Percussion Soloist	
YELLOW AFTER THE RAIN -----	
Scott Parkman, Kilgore High School	
Marimba Soloist	
OLYMPIC FANFARE AND THEME -----	W1
Ensemble	arr. S. P
THE WILLIAM TELL OVERTURE -----	Rossini/H
Ensemble	

Special Thanks to the following Band Directors
for their assistance

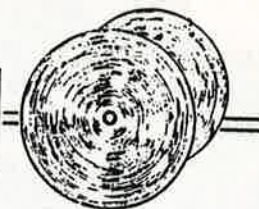
Cathie Cain, Hughes Springs HS
Mark Melton, Union Grove HS
James Snowden, Pine Tree HS
Glenn Wells, Kilgore HS
Bobby Richardson, Longview HS

Longview ISD
Percussion Instructor
1989-90

Rhythm



PERCUSSION



SOLOS

ENSEMBLES

featuring

TMEA ALL-REGION BAND PERCUSSIONISTS

UIL SOLO & ENSEMBLE MEDAL WINNERS

Billy Byrd, Union Grove HS
Eric Connor, Longview HS
Aaron Dickinson, Marshall HS
Kate Mallari, Pine Tree HS
Charlie Mayo, Longview HS
Michael Medford, Kilgore HS
Chris Nichols, Hughes Springs HS
Scott Parkman, Kilgore HS
Tim Pollock, Longview HS

Don Lawler, Director

Monday - May 7, 1990
Longview HS Band Hall -- 4:30 p.m.



**PINE TREE
JUNIOR HIGH
BANDS**



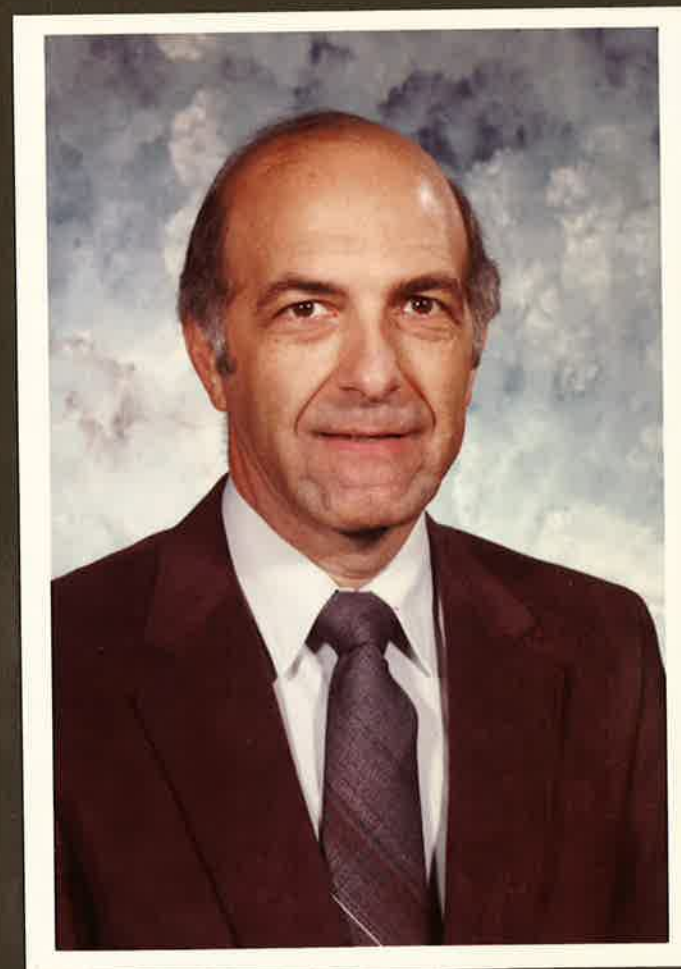
Spring Concert

EIGHTH GRADE BAND
Don Lawler, Director

NINTH GRADE BAND
Lynn Childers, Director

MAY 17, 1994 - 7:00 P.M.

**PINE TREE HIGH SCHOOL
LITTLE THEATRE**



**Pine Tree Junior High Bands
1990-95**



1994-95

REGION IV TMEA
BAND DIRECTOR
OF THE YEAR

Don Lawler

OCTOBER 18, 1995

**Retired
PTISD band
director
earns honor**

Don Lawler, recently retired band director from the Pine Tree Independent School District, has been voted "Outstanding Band Director of Region IV, TMEA."

The region extends from Kilgore to the Oklahoma border and from Gladewater to Louisiana. The honor was decided in a vote by the directors at their annual fall meeting in Mount Pleasant.

Over the years, Lawler's bands consistently won praise from adjudicators. He taught private percussion lessons, and several of his students achieved high honors at the college level, said Dr. James Snowden, director of bands at Pine Tree ISD.

For a number of years, Lawler served as director of the Stephen F. Austin Summer Band Camps.

During the past four years, he served as junior high band director at Pine Tree. Before that, he taught at Longview, Kilgore and Spring Hill, as well as a previous stint at Pine Tree.

Lawler, who graduated from Stephen F. Austin State University, began his career in 1967 after serving in the U.S. Air Force.

In Appreciation

To

Don Lawler

In Honor of Your Many Years

Of Diligence and Dedication

To Our Students

Thank You for Elevating Our
Appreciation and Performance

Of Music to New Heights

MEMBERS OF THE

PINE TREE JR. HIGH BAND

1995

**Pine Tree ISD
Annual Retirement
Dinner
April 27, 1995**

Welcome

Steven Best

Member, Board of Trustees

Invocation

Stacey Bryce

Principal, Middle 6/7 School

Dinner

Entertainment

PTHS Choir and PT Express

**Introduction and Presentation
of**

1994-'95 Retirees

Beth Shepperd

Closing Remarks

Dr. Marc Williamson

Superintendent, Pine Tree ISD



Don Lawler

27 Years

Gamma Phi Chapter
of
Kappa Kappa Psi

Honors

Don Lawler
2003 Inductee
into the

SFASU Band Director's
Hall of Fame

April 27, 2003

**Longtime ET band
director honored**

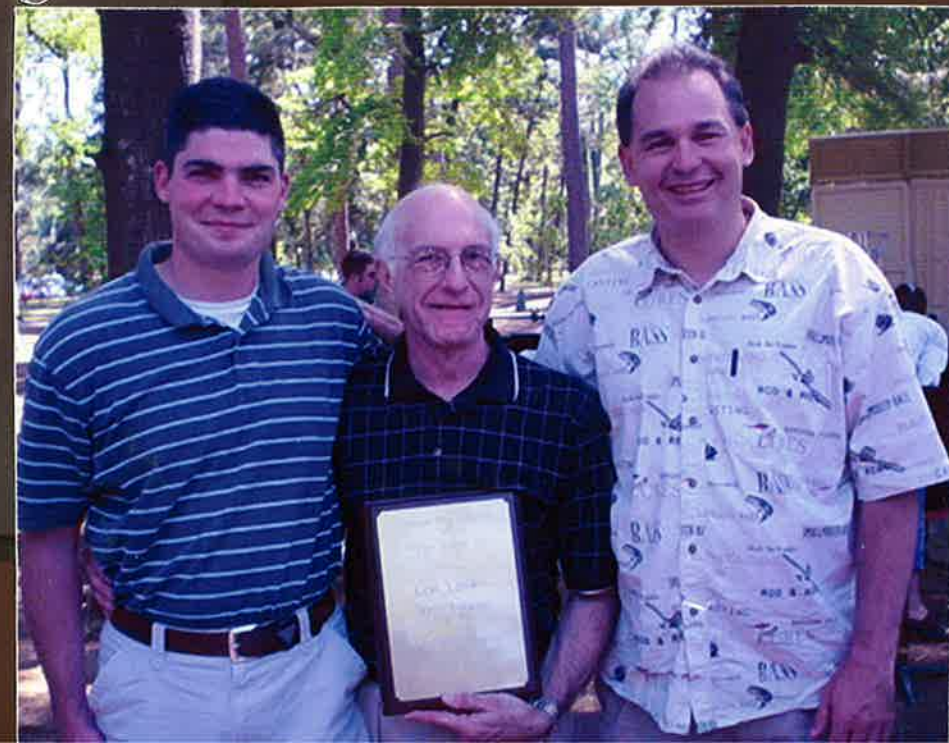
NACOGDOCHES — East Texas band director **Don Lawler** will be inducted into the Stephen F. Austin State University Band Directors Hall of Fame.

Lawler graduated from Spring Hill High School, where he was selected for the all-state band for three years. After attending Kilgore College, he received his bachelor's degree from SFA in 1962.

In 1967, Lawler began teaching band at Forest Park Junior High, where the band won the school's first University Interscholastic League sweepstakes award. He later began a long tenure with the Pine Tree Independent School District.

Lawler also directed the Spring Hill High School band and taught at Maude Laird Middle School in Kilgore.

After his retirement in 1995, Lawler has continued working with band directors and students on a part-time basis at the Union Grove, Longview and Spring Hill school districts.



Spring Hill ISD Presents
The Beginner Band, High School Symphonic Band,
High School Percussion Ensemble,
& High School Wind Ensemble
In Concert

THE SPRING HILL ISD BANDS IN CONCERT

PERFORMANCES BY THE HS JAZZ BAND,
THE 6TH GRADE BEGINNER BAND, AND THE HS BAND

*The Spring Hill Junior High
In Concert*

**The Spring Hill JH Bands
In Concert**



May 16, 2006 – L.L.

MAY 17, 2005 – L.L. WILLIAMSON AUDITORIUM – 7P

December 7, 2004

05 – L.L. Williamson Auditorium – 7pm



**Spring Hill ISD
Percussion Instructor
1998-2011**



Spring Hill ISD Band Program

presents a recital of

PERCUSSION SOLOS AND ENSEMBLES

Wednesday, May 21, 2008 – 5:30 pm

Junior High Band Hall

featuring

Eighth Grade and High School Percussionists

Keith Zuech (SH Grad)
SFA Percussion Music Major

Max McRuiz (SH Grad)
Kilgore College Percussion Music Major

Come – hear these talented students perform
selections learned during the school year

PERCUSSION – Then and Now
Wednesday – May 21, 2008 – 5:30 pm
Spring Hill JH Band Room

“PARADE OF THE WOODEN SOLDIERS”

“1958” Style

Jeremy Andrews
Michael Bass

John Grubb
Matthew Jackson

Leon Jessel
Arr. Acton Osterling

“2008” Style

Brian Evans
Donald Holder
John Tadlock

Will Turner
Emily Woody
Kelsey Zuech

Arr. Murray Houllif

“FIVE AGAINST TWO”

Rudimental Snare Drum Solo

Matthew Jackson, UIL State Soloist – San Marcos, May 24

Edward Freytag

“MOSIACS”

Eighth Grade Percussion Ensemble

Brian Evans
Donald Holder
John Tadlock

Will Turner
Emily Woody
Kelsey Zuech

Jared Spears

“THREE PRELUDES” – No. 1

Acoustical Guitar Solo transcribed for Marimba

Michael Bass
UIL State Soloist – San Marcos – May 24

Ney Rosaura

“ROCK STOCK”

Timpani Solo

John Tadlock, Soloist

George Frock

“COUNTY CLARE”

Mallet Percussion Ensemble

Michael Bass
John Grubb
Matthew Jackson

Maddie Moore
John Tadlock
Zach Canter

Steinquest

Keith Zuech – SFA Percussion Music Major
Max McRuiz – Kilgore College Percussion Music Major

“TAT DUGGA DA KAA”

High School Percussion Ensemble

Jeremy Andrews
Michael Bass

Callie Chandler
John Grubb

Matthew Jackson

UIL State Ensemble Performers – San Marcos – May 24

Jeff Queen



The Legend of the Stole of Gratitude

Every graduate has had a special person who, through moral or financial support, made a big difference in his or her life. The Stole of Gratitude offers an opportunity to say, “*Thanks for helping me make it through, thanks for making it possible for me to succeed!*”



Musicians fulfill quest with concert

By JUNE FORD
Staff Writer

Teague Park will vibrate to the sound of music Friday evening as a host of local professional musicians fulfill a quest to perform under the stars.

The East Texas Summer Concert Band will make its debut at 7:30 p.m. Friday in Longview's Teague Park Amphitheater, said Wayne Smith, one of the group's organizers.

The 40-member volunteer band is composed of students and others who have performed profes-

sionally during the summer months, hoping the free concert will help them gain some experience.

"We're doing something, if we can't do it in the summer, we'll do it in the winter," Smith said. The band will perform two outdoor concerts.

They will use blankets, chairs and other things to make the approxi-

mately 100 seats available for someone to sit on. Smith said. "We originally had a concert in June is a busy month for me (band director)." Smith said.

Smith said musicians have been practicing for several weeks.

"We have quite a few musicians here. We've had about 40 this (for a couple of years)." Smith said.

Smith said musicians in the area are interested in the concert. The concert will be held at the Teague Park Amphitheater. Smith said. "We'll have our rehearsals, and we'll have a concert has been a success."

Smith said. "We'll have a concert and an admission fee when we all get together."

Thursday

Evening

July 18, 1985



Staff photo by Steve Earley

Members of the East Texas Summer Concert Band include (back row l-r) Adonna Teat, Don Lawler and Wayne Smith; (front row, l-r) Wil Reavis, Spike Buie and Beverly Fleming.

The East Texas Symphonic Band

Celebrating Its 23rd Season

PRESENTS

A Season of
Traditional Concerts
2010 - 2011



The Kilgore College
Department of Music and Dance
Presents

FALL CHORAL CONCERT

The East Texas Community Chorus

Tuesday, November 16, 2010
7:30 p.m.

The First United Methodist Church, Longview, TX

Musicians fulfill quest with concert

By JUNE FORD
Staff Writer

Teague Park will vibrate to the sound of music Friday evening as a host of local professional musicians fulfill a quest to perform under the stars.

The East Texas Summer Concert Band will make its debut at 7:30 p.m. Friday in Longview's Teague Park Amphitheater, said Wayne Smith, one of the group's organizers.

The 40-member volunteer band is composed of students and others who have performed profes-

sionally during the summer months, hoping the free concert will help them gain some experience.

"We're doing something, if we can't do it here, we'll do it in the winter," Smith said. "We'll perform two outdoor concerts."

The band will use blankets, chairs and other equipment for the approximate 100 seats.

Smith said. "We originally planned to perform in June, but June is a busy month for the band director."

Smith said musicians have been practicing for several weeks.

"We have quite a few musicians here. We've had about 100 this (for a concert)."

Smith said musicians in the area are interested in the concert. The concert will be held at the Teague Park Amphitheater, located at the pool Band Hall. Smith said the concert will be held during their rehearsals.

Smith said the concert has been a success.

Smith said the concert and an additional concert will be held when we all get together.

Thursday

Evening

July 18, 1985



Staff photo by Steve Earley

Members of the East Texas Summer Concert Band include (back row l-r) Adonna Teat, Don Lawler and Wayne Smith; (front row, l-r) Will Reavis, Spike Buie and Beverly Fleming.

The East Texas Symphonic Band

Celebrating Its 23rd Season

PRESENTS

A Season of
Traditional Concerts
2010 - 2011



The Kilgore College
Department of Music and Dance
Presents

FALL CHORAL CONCERT

The East Texas Community Chorus

Tuesday, November 16, 2010
7:30 p.m.

The First United Methodist Church, Longview, TX

"Sounds of Spring"

Concert Program

Monday, March 29, 2010

- Excerpt from "Die Gotterdammerung".....R. Wagner, Arr. Snowden
- Symphony No. 3 "Slavyanskaya".....Boris Kozhevnikov
1. Allegro 2. Slow Waltz 3. Vivace 4. Finale, allegro
- C.S.S. Alabama MarchKelly Bennette
- Concerto No. 2, Polacca.....Carl Maria von Weber
Nicholas Durham, Clarinet
- Somewhere In TimeJohn Barry, Arr. Custer
- The Southerner MarchRussell Alexander
Dr. Gerald Pinson, Guest Conductor
- The Blue Danube WaltzJ. Strauss, Arr. Snowden
- Mountain Call and Galop from William TellG. Rossini, Arr. Snowden
Michelle Holyfield, Oboe
Jennifer Puckett, Flute
- Missouri ShindigH. Owen Reed
Renee Ward, Violin
- The Chimes of Liberty MarchEdwin F Goldman
- Satchmo!Arr. Ted Ricketts
Glenn Bessinger and Ty Hood, Trumpets

Thanks to Pine Tree ISD and Dr. Richard Holsomback for providing rehearsal facilities.

OUR GREAT MUSICIANS

Under the direction of Dr. James Snowden

Flute

Shara Kipp, Picc.
Jennifer Puckett
Ouida Henson
Deborah Gilbert
Donna Varnell

Oboe

Michelle Holyfield

Bass Clarinet

De Davis

Bassoon

Karen McCullough

Alto Sax

Ed Aleman
Jason Barnes
Jonathan Stafford

Tenor Sax

Blake Edwards
Chance James

Horn

Andrea Denis
Don Knight
Sarah Varnell
Kelly Neff
Karen Maines
Brandon McFarland

Clarinet

Allyson Neely
Connie Cooper
Susan Breitenberg
Kimberly Plants-Paris
Taraielle Harris
Terry Proffer
Lexi Martin
Carol Blair
Amber Garrison
James Thomas
Mark Roberts
Xenia Durham

Contra-Bass

Megan Williamson

Trumpet

Steve Allen
Richard Holsomback
Glenn Bessinger
Doice Grant
Ty Hood
Oscar Denis
Grant Woodson
Ross Langdon

Announcer

Al Albert

Trombone

Keith Holman
Randy Maines
Greg Smith

Bass Trombone

David Harper
Justin McFaul

Euphonium

Rance Hawthorne
Martin Cobb
Jeff Smith

Tuba

Kelly Bennette
Jay Wooten

Percussion

Don Lawler
Susan Thomas
Brian Evans
Matt Judkins
John Tadlock
Will Turner
Austin Horton

East Texas Symphonic Band Board of Directors

Steve Allen, President
Karen Maines, Secretary
Rhonda Wright
Dr. James Snowden, Director
Karen McCullough
Jeff Wright
Connie Cooper

Nan Mitchell, Treasurer
Judy Arroyo
David Harper
Janet Galvan
Michelle Holyfield
Dale West
Dr. Craig Varnell

**Founding Member
Longview Symphony Orchestra
Principal Percussionist
Business Manager
1968-78**



**THE LONGVIEW SYMPHONY
LEAGUE**

presents

GUEST PERFORMANCE — Texas pianist James Dick, who performed with the Longview Symphony Orchestra Tuesday night, presented two assembly programs for students of the Pine Tree Middle School Monday afternoon. Conversing with him are, left to right, Sandra Wallace, Pine Tree Middle School music instructor; Don Lawler,

LSO manager and Pine Tree assistant band director; and James Snowden, Longview Symphony Orchestra conductor. The pianist also performed at an assembly for Longview High School students Monday morning. (STAFF PHOTO By Dolores Brown)

**THE LONGVIEW SYMPHONY
ORCHESTRA**

**James Snowden
Conductor**

February 8, 1969

8:00 P.M.

**LONGVIEW HIGH SCHOOL
AUDITORIUM**



BOARD MEETS FOR DISCUSSION — The Longview Symphony Orchestra League board met Tuesday night in the Longview High School band auditorium to make plans for their annual membership drive to be held Sept. 8 through Sept. 19. James Snowden will be the conductor of the 70-piece sym-

phony orchestra. From left to right these new board members are, Wells Burton, Don Lawler, business manager; Franklin Martin, Brew Houston, Mrs. Bobby Smith, and Bob Boyett, president. Martin has been named general chairman of the league's membership drive. —(STAFF PHOTO) .

ORCHESTRA NEWS[®]

SEPTEMBER, 1970

VOLUME IX

NO. 4

A quarterly magazine devoted to the development and encouragement of orchestras in America



*Dr. Albert Renna,
Director of Music,
San Francisco
Public Schools.*

*Seiji Ozawa,
Conductor of the
San Francisco
Orchestra.*



IN
THIS
ISSUE

- CONCERTMEISTERS, ARISE!
- SUZUKI INTERLUDE IN TOKYO
- GOOD POSITIONS, GOOD FIDDLERS
- THE STRING APPROACH IN JAZZ: PART III
- TRAVEL & MUSIC, "GEMÜTLICH" MIXTURE
- CHAMBER MUSIC: THE PREPARATORY GESTURE

SCHOOL AND COMMUNITY HAPPILY MARRIED IN THE LONGVIEW SYMPHONY



JAMES SNOWDEN

THE LONGVIEW, TEXAS Symphony was organized as a cooperative school and community venture in 1968 by James Snowden, Helen Banister, and Don Lawler. Snowden, 26-year-old conductor and head of the string program in the Longview Public Schools and band director of a junior high school, originated the idea. Miss Banister, a string instructor, handled

membership organization. Lawler, a school band director, took on other details including the recruiting of volunteers to form the Longview Symphony League Board of Directors.

The first rehearsal produced forty-two string players. By the time of the first concert, the orchestra numbered sixty members. Now, with several successful well-attended concerts behind it, the League now boasts 275 members, and orchestra membership keeps growing steadily.

Longview deserves a bow for this accomplishment, not because it is a city of only 55,000 people, but because it is in an area devoid of symphony and school orchestra, opera, ballet, and many other cultural activities common to most other cities in our country. Bands flourish in the area, but school string programs outside of Longview are unheard-of. The Longview Symphony Orchestra hopes to change this situation; and judging from its great start, we're sure they'll do just that! ■



Symphony To Use New Instruments

Several new instruments, including a Ludwig Timpani, and Musser Xylophone, will be used by the Longview Symphony when it presents its second concert of the current season at 8 p.m. Saturday at Longview High

School Auditorium. Tickets, priced at \$1, may be obtained at the door.

Tickets may also be obtained in advance at Tatum Music Company and Longview Drug

Company as well as from Longview Symphony officers and directors. These include Herbert Boyland, president; Dr. John S. Guttry, vice president; Mrs. L. A. Colquitt, secretary; Mrs. Paul Young, treasurer; Zack Abney, Bob Boyett, Brew Hous-

ton, Mrs. J. M. Knox, Mrs. T. R. LeTourneau, Wells Burton and Ed Buckner, directors.

The Longview Symphony League, a lay organization, was formed Nov. 19, 1968, to promote a symphony in Longview. Memberships are \$5 and it is from these funds that the new instruments were purchased. The memberships have also financed the piano concerto contest in December, 1969, and will finance the symphony's concert trip to Stephen F. Austin University Feb. 9.

Memberships for the year 1968 - 69 totaled 193 and for the current 1969-70 year stand at 275.

The local symphony is a member of the American Symphony Orchestra Association Inc.



SYMPHONY GETS NEW INSTRUMENTS—Herbert Boyland, center, congratulates Don Lawler, a member of the percussion section of the Longview Symphony Orchestra, on the

new instruments, timpani and xylophone, purchased for the organization. Left is James Snowden, conductor. **STAFF PHOTO**



DON LAWLER -- Tympanist



To Don Lawler
 Keep beating these skins for best!



Presents

The Longview Symphony
 Orchestra

JAMES SNOWDEN
 CONDUCTOR

Featuring
GARY KARR
 Guest Soloist

THIRD CONCERT, NINTH SEASON

Longview High School Auditorium
 Saturday, March 12, 1977 at 8 p.m.

"Add quality to life through music"

Longview
 Symphony
 Orchestra

A Festival of Russian Music was presented by the Longview Symphony Orchestra in the Pine Tree Auditorium at the first concert of the 1974-75 season. Director of the orchestra is James Snowden. Marvin Mikeska (above right), president of the Longview Symphony League, welcomed a capacity crowd to the performance. Diane Berry, flutist, and Don Lawler, who plays the tympani, are members of the 57-piece orchestra.



THE LONGVIEW SYMPHONY LEAGUE
 Certifies that
Don Lawler, Tympanist

is a CHARTER MEMBER of
 THE LONGVIEW SYMPHONY ORCHESTRA

and participated in its first season's concerts on
 February 23, 1969 and May 10, 1969

James Snowden
 Conductor,
 Longview Symphony Orchestra
Don Lawler
 Business Manager,
 Longview Symphony Orchestra

May 10, 1969
Dr. L. A. Colquhitt
 President,
 Longview Symphony League
Mrs. Paul B. Young
 Secretary,
 Longview Symphony League

Stephen F. Austin State University

Nacogdoches, Texas 75961

THE UNIVERSITY AMONG THE PINES

PLEASE POST



1970 ANNUAL SUMMER Lumberjack

BAND CAMPS

CAMP DIRECTOR:

Mel Montgomery
Director of Bands
Stephen F. Austin State University
Nacogdoches, Texas 75961

Participation in these camps is offered to junior high, senior high, and college band members (in seventh grade or higher next year) who are interested in using their vacation to further develop their band interests and skills.

Whether twirler, drum major, or instrumentalist, you will find these camps designed to fit the needs of any student regardless of level of attainment or proficiency.

SEE YOUR DIRECTOR FOR APPLICATION BLANKS

**SFA Music Department
Summer Band Camps
Student Assistant, Counselor, Instructor
Assistant Director
1961-86**



BAND CAMP

Tuition - - - - -	\$20.00
Insurance - - - - -	.75
Room & Board - - - - -	<u>28.25</u>
Total	\$49.00

1970 CAMP STAFF

- James Matthews - - - - - University of Houston
Symphonic Band
- Floyd Weger - - - - - Paris, Texas
Concert Band
- Val Rose - - - - - Jacksonville, Texas
Cadet Band
- Pete Rodriguez - - - - - Lancaster, Texas
Low Woodwinds & Stage Band
- Pete Kunkel - - - - - Longview, Texas
Flutes
- Joe McMullen - - - - - League City, Texas
Clarinets
- Troy Lilly - - - - - Nacogdoches, Texas
Double Reeds
- Herman Gauthier - - - - - Nederland, Texas
Saxophones
- Stanley Walker - - - - - Pittsburg, Texas
Cornets
- Jack Miles - - - - - Houston, Texas
French Horns
- Waymon Bullock - - - - - Lufkin, Texas
Trombones, Baritones
- Albert Long - - - - - Port Neches, Texas
Tubas, Recreation Director
- Flanoyd Turner - - - - - Houston, Texas
Percussion
- Mrs. Rose Long - - - - - Port Neches, Texas
Head Counselor



S.F.A. BAND CAMP
Nacogdoches, Tex.
July 1964

SFA

LUMBERJACK BAND 1984 CAMPS



Mel Montgomery



Duke Miller



Diane Brown



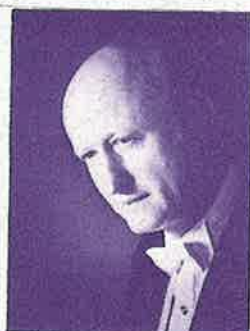
Randy Dawson



Glynn Finley



Don Lawler



Francis McBeth



Howard Dunn



Henry Schraub



Anthony Michalsky



Bill Goodson



Wayne Dyess



Roger Ashcraft



Bobby Richardson



Deena Chambley

Summer Camp Is Under Way

NACOGDOCHES — Annual summer band camp is under way this week at Stephen F. Austin State University with 238 junior and senior high school students attending.

Mel Montgomery, director of bands at SFA, said the camp will end Friday with a special concert at 3:30 p.m. featuring the musical groups which have been organized. The concert will be presented in the Griffith Fine Arts Auditorium on the SFA campus.

Dr. Francis McBeth, head of the music department at Ouachita University in Arkadelphia, Ark., heads the camp staff this week. Dr. McBeth also is director of the Little Rock, Ark., Symphony. He is serving as director of the symphonic band which is comprised of select students from the camp.

Other members of the staff, all visiting band directors, include Dr. Karl Wadenpfehl of Kirbyville, Stanley Walker of Pittsburg, Pete Rodriguez of Lancaster, John Kunkel of Longview, Charles Lisman of Beaumont, Troy Lilly of Nacogdoches, Steve Goacher of the SFA music department faculty, Val Rose of Jacksonville, Jack Miles of Houston, Roger Winslow of Hurst, Bill Goodson of Daingerfield, David Lambert of Nacogdoches and Dean Watson of Daingerfield.

Don Lawler of Longview is serving as camp director.

**Texas Loses Pioneer
Music Educator**
by Don Lawler

The Band Movement in Texas lost a pioneer in music education with the death of Paul Stroud on August 25, 2002. His funeral service and internment were held on August 28, in Longview, Texas.

A native of Henderson, Paul received Bachelors and Masters of Music Education Degrees from Stephen F. Austin State University in Nacogdoches, Texas. His teaching career began at Rocky Mountain School, near Overton, Texas, in 1936. Though only an eight grade school, the band - under his direction - was honored for its performance of advanced-level music, and won many State and Regional Competitions. The band was selected to represent the "Small Schools of Texas" at numerous festivals and educational conventions.

From 1942-45, he taught at New London High School, south of Kilgore, Texas. Many students in the program excelled individually to music performance and music education careers.

Following another three years (1945-48) at East Mountain High School, near Gilmer, Texas, Stroud spent seven years at Spring Hill High School in Longview. As a Class B High School, the performing band was composed of students from grades six through twelve. Again his teaching and motivational skills led the bands to state-wide recognition for performing literature much above the students' expected ability level. Individual students were selected for All-State Band membership.

In 1955, Paul was one of the first band directors in the East Texas

area to concentrate his work totally at the junior high level.

From 1955-65, he led the Lufkin Junior High Bands to ten consecutive UIL Sweepstakes Awards for performance in Marching, Concert and Sight-reading.

Returning to Longview in 1965, Paul taught in the Longview and Pine Tree School Districts until his retirement in 1977. He spent the last four years teaching beginner students only, and possessed an exceptional talent for teaching at that level. As each group prepared for its first performance, his favorite challenge to them was "Everyone knows that we are beginners, but we don't have to SOUND like we are!"

During his forty-one year career, he served on the State UIL Music Advisory Committee and the PML Music Selection Committee. He was in great demand for All-Region Band Clinics and UIL Band Competition Adjudication. He was a member of TMEA, TBA, TMAA and Phi Beta Mu International Bandmasters Fraternity.

In 1974, Paul Stroud was honored by TBA as the Texas Bandmaster of the Year, and in 1980, was the first inductee into the Stephen F. Austin State University Band Directors Hall of Fame. He was a member of the 1990 class of inductees into the Phi Beta Mu Texas Bandmasters Hall of Fame.

Stroud was a pioneer in motivating students, with his unique personality on and off of the podium, to perform much above their expected ability levels. He provided a very positive experience for students he taught, and he instilled in many a lifetime appreciation for music and for band performance.

His wife of 69 years, Lucille Stroud, passed away on November 10, 2002. They are survived by one son, Joe Paul Stroud, who resides in The Woodlands, and is a profes-

sional musician/trumpet teacher in the Houston area.

A Paul Stroud Memorial Band Scholarship Fund has been established at the Stephen F. Austin State University Alumni Association. □

This article was written by Don Lawler, Region IV UIL Executive Secretary. Mr. Lawler was a former student of Paul Stroud.



Paul Stroud
My First Band Director, My Mentor
My "Second Dad"



**East Texas Area Retired Band Directors Lunch
First Thursday – Ryan’s Steakhouse, Longview – 11:30 am
Great Fellowship and Band Stories**



Texas Loses Pioneer Music Educator

by Don Lawler

The Band Movement in Texas lost a pioneer in music education with the death of Paul Stroud on August 25, 2002. His funeral service and interment were held on August 28, in Longview, Texas.

A native of Henderson, Paul received Bachelors and Masters of Music Education Degrees from Stephen F. Austin State University in Nacogdoches, Texas. His teaching career began at Rocky Mountain School, near Overton, Texas, in 1936. Though only an eight grade school, the band - under his direction - was honored for its performance of advanced-level music, and won many State and Regional Competitions. The band was selected to represent the "Small Schools of Texas" at numerous festivals and educational conventions.

From 1942-45, he taught at New London High School, south of Kilgore, Texas. Many students in the program excelled individually to music performance and music education careers.

Following another three years (1945-48) at East Mountain High School, near Gilmer, Texas, Stroud spent seven years at Spring Hill High School in Longview. As a Class B High School, the performing band was composed of students from grades six through twelve. Again his teaching and motivational skills led the bands to state-wide recognition for performing literature much above the students' expected ability level. Individual students were selected for All-State Band membership.

In 1955, Paul was one of the first band directors in the East Texas

area to concentrate his work totally at the junior high level.

From 1955-65, he led the Lufkin Junior High Bands to ten consecutive UIL Sweepstakes Awards for performance in Marching, Concert and Sight-reading.

Returning to Longview in 1965, Paul taught in the Longview and Pine Tree School Districts until his retirement in 1977. He spent the last four years teaching beginner students only, and possessed an exceptional talent for teaching at that level. As each group prepared for its first performance, his favorite challenge to them was "Everyone knows that we are beginners, but we don't have to SOUND like we are!"

During his forty-one year career, he served on the State UIL Music Advisory Committee and the PML Music Selection Committee. He was in great demand for All-Region Band Clinics and UIL Band Competition Adjudication. He was a member of TMEA, TBA, TMAA and Phi Beta Mu International Bandmasters Fraternity.

In 1974, Paul Stroud was honored by TBA as the Texas Bandmaster of the Year, and in 1980, was the first inductee into the Stephen F. Austin State University Band Directors Hall of Fame. He was a member of the 1990 class of inductees into the Phi Beta Mu Texas Bandmasters Hall of Fame.

Stroud was a pioneer in motivating students, with his unique personality on and off of the podium, to perform much above their expected ability levels. He provided a very positive experience for students he taught, and he instilled in many a lifetime appreciation for music and for band performance.

His wife of 69 years, Lucille Stroud, passed away on November 10, 2002. They are survived by one son, Joe Paul Stroud, who resides in The Woodlands, and is a profes-

sional musician/trumpet teacher in the Houston area.

A Paul Stroud Memorial Band Scholarship Fund has been established at the Stephen F. Austin State University Alumni Association. □

This article was written by Don Lawler, Region IV UIL Executive Secretary. Mr. Lawler was a former student of Paul Stroud.



Paul Stroud
My First Band Director, My Mentor
My "Second Dad"

Local band directors inducted into hall of fame

BY ALLISON THOMAS
Special to the News-Journal

Two local band directors will be inducted into the Texas Bandmasters Association's Hall of Fame during ceremonies July 26 in San Antonio.

Neil Grant and Don Lawler, who were band directors at Longview Independent School District, are

two of seven directors honored this year by the invitation-only organization. To be considered for the honor, the band directors have to be retired.

"I never thought of anything else I wanted to do," Grant said about becoming a band director.

Grant started into the band program at an early age, becoming an all-state band member at 12. He was a band director for 10 years and owned Tatum Music for 40 years.

From 1967 to 1969, Grant was the band director at Longview High School, leading the band to its first sweepstakes.

"It is quite a humbling experience," Grant said about being inducted into the Hall of



Don Lawler
Band director



Neil Grant
Band director

See BAND, Page 7A

Band

From page 1A

Fame.

"It's especially special because I wasn't a band director for 50 years, I was just one for 10," he added.

Lawler said that in high school, music was the only thing that kept him going.

"It was a talent I had," he said.

Lawler spent four years in the Air Force band program, and after getting out of the military, he said he was persuaded to take a job as a band direc-

tor.

"Mr. Grant was actually the one who hired me to take the job at Forest Park Middle School. He was the director for Longview at that time," he said.

"Being inducted into the hall of fame was an emotional experience. I was overwhelmed and not expecting it," Lawler said.

Both men are still active in music.

Lawler is involved with the Longview Symphony, and Grant steps to direct school bands as a guest.

Did you know?

- Neil Grant was an all-state band trumpet player before graduating from Timpson High School;
- Don Lawler was an all-state band percussionist before graduating from Spring Hill High School.
- Grant and his wife, Jackie, live on an East Texas farm. The couple have four children and nine grandchildren.
- Lawler and his wife, Mary, live in Longview and enjoy singing in the East Texas Community Chorus. The couple have two children and two grandchildren.