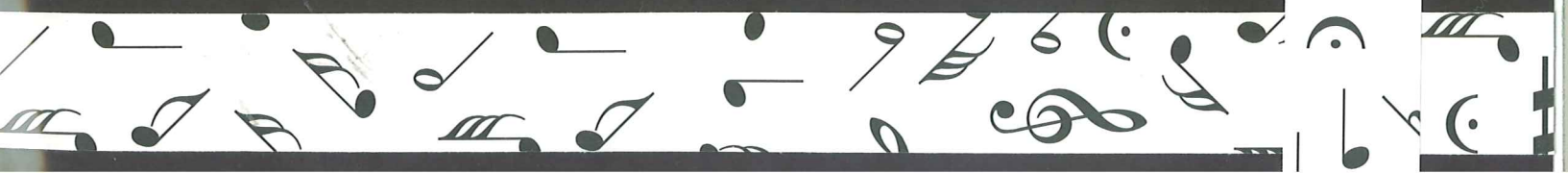




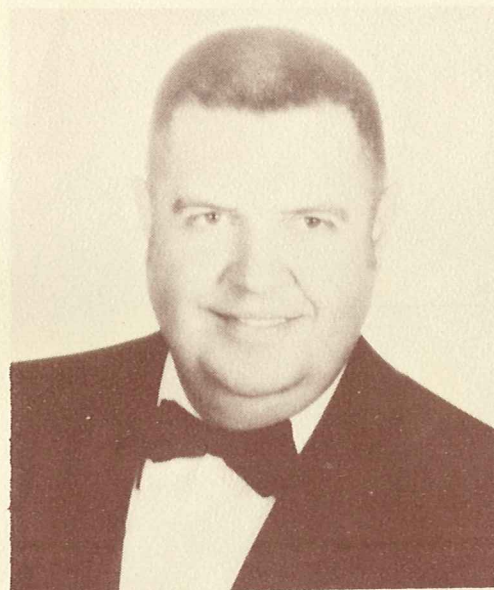
*Featured
Works*



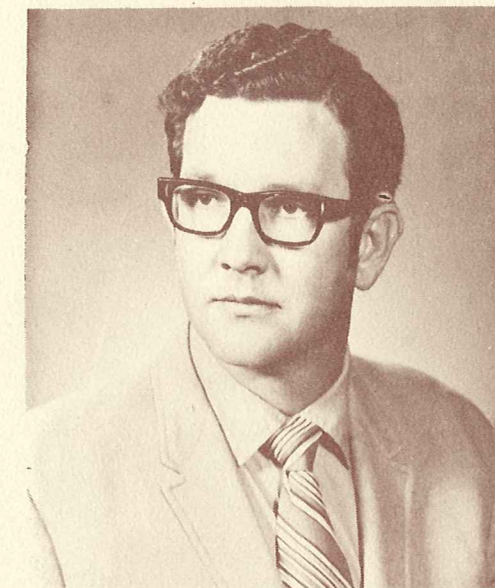
EIGHTEENTH ANNUAL

Southwestern Band Camp

SOUTHWESTERN STATE COLLEGE



DR. JAMES W. JURRENS
Camp Director
Southwestern State College



TOMMY FRY
Composer of "Triptych"
Conductor, Honor Band
Midland, Texas

JULY 8 - 14, 1973

WEATHERFORD, OKLAHOMA

BAND

TWIRLING

THEORY

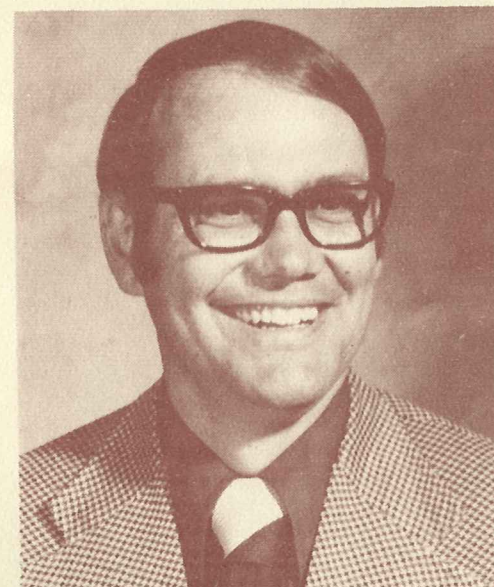
ENSEMBLES

STAGE BAND

DRUM MAJORING

PRIVATE LESSONS

DIRECTORS BAND



JEFF DOUGHTEN
Conductor, Symphonic Band
Stratford, Texas



JERRY HUFFER
Conductor, Concert Band
Muskogee, Oklahoma

MUSIC 4011 (Seminar in Music-Band Directors)

ONE HOUR CREDIT

RECREATION

Tennis Swimming Bowling Camp Bell



TOM HUTCHINSON
Conductor, Varsity Band
Elk City, Oklahoma



LEON JEWELL
Conductor, Prep Band
Enid, Oklahoma

ENJOY A WEEK ON A COLLEGE CAMPUS

Tuition.....\$25.00

Room and Board.....\$25.00

BAND CAMP STAFF, 1973

Dr. James W. JurensDirectorSouthwestern State College
 Vic KylerProgram DirectorGruver, Texas
 Skip KlingmanStudent PersonnelMuskogee, Oklahoma
 Damon Ladd.LibrarianLiberal, Kansas
 Irvin Miller.LibrarianGuymon, Oklahoma
 Steve Westmoreland.Equipment Manager.Clinton, Oklahoma
 Charles Regier.Equipment Manager.Corn, Oklahoma
 Roger Quibodeaux.Drum Majoring.Southwestern State College
 Marilyn Pilkington.Twirling.Southwestern State College
 Myron KingTwirling.Southwestern State College
 Pat SurfaceTwirling.Stratford, Texas
 Bill Surface.Assistant Program DirectorStratford, Texas
 Cathy Ewalt.Counselor.Mountain View, Oklahoma

Gene Beck – Weatherford, Oklahoma
 Vernon Blehm – Liberal, Kansas
 George Brite – Sapulpa, Oklahoma
 Gary Brown – Norman, Oklahoma
 Al Buswell – Del City, Oklahoma
 Ed Chapman – Altus, Oklahoma
 Bernie Fiedler – Southwestern State College
 Paul Fry – Southwestern State College
 Gene Griffin – Enid, Oklahoma
 John Gurley – Muskogee, Oklahoma
 Larry Harris – Altus, Oklahoma
 Lex Hedgecock – El Reno, Oklahoma
 Bert Hensley – Fairview, Oklahoma
 Doug Hillock – Clinton, Oklahoma
 Randy Hurst – Geary, Oklahoma
 Al Jensen – Enid, Oklahoma
 Floyd Lamke – Watonga, Oklahoma

David Lucas – Lawton, Oklahoma
 Pat Malloy – Hobart, Oklahoma
 Ron Mitchell – Walters, Oklahoma
 Mike Newsom – Seiling, Oklahoma
 Bennie Newton – Marlow, Oklahoma
 Dwight Odell – Canadian, Texas
 Phil Payne – Thomas, Oklahoma
 Phil Phyllaier – Snyder, Oklahoma
 Danny Rock – Alva, Oklahoma
 Terry Segress – Southwestern State College
 Craig Smith – Fairview, Oklahoma
 Dr. Ken Snyder – Southwestern State College
 Jerry Toler – Guymon, Oklahoma
 Ed White – Moore, Oklahoma
 Ben Williams – El Reno, Oklahoma
 Ed Williams – Southwestern State College
 Tim Youree – Fritch, Texas



JOE WAYNE HARPER
Conductor, Cadet Band
Cordell, Oklahoma

NOTE:
Applications will
be accepted on
a first-come
first-served basis.
Only 500
applications will
be accepted.

See Your Director For Enrollment Blanks

ENROLLMENT SHOULD BE BEFORE JUNE 22, 1973

Honor Band and Choir Committee

DUANE E. JOHNSON, Co-Chairman

LAWRENCE VAN SLAMBROOK, Co-Chairman

THERON B. MAXSON
President, Hastings College

MARVIN M. FINK
Secretary to the College

MILLARD H. CATES, Chairman
Department of Music

IRENE MOERER
Associate Dean of Students

CHARLES BACON
Dean of Men

DAVID HALL
Director of Admissions

TED MENKE
Admissions Counselor

DON MATHEWS
Public Relations

ALAN E. STANEK
Assistant Professor of Woodwinds

MARK DOTY, President
Hastings College Band

TERRY EGBERT, President
Hastings College Choir

STEVE NELSON, Vice President
Hastings College Band

RON BOURKE, Vice President
Hastings College Choir

CYNTHIA SCHMALE, Secretary
Hastings College Band

DEBRA FLETCHER
Secretary
Hastings College Choir



THE
1972
NEBRASKA
HIGH
SCHOOL

HONOR BAND
HONOR CHOIR

Honor Choir Program

Dr. Howard Swan, Guest Conductor-Clinician

Holy, Holy, Holy	Giovanni Palestrina
The White and Gentle Swan	Orazio Vecchi
How Excellent Thy Name	George Frederic Handel
Laudate Dominum (Psalm 117)	Wolfgang Amadeus Mozart from "Vesperae Solennes De Confessore"
Die Primel (The Primrose)	Felix Mendelssohn-Bartholdy
At The Round Earth's Imagined Corners	Williametta Spencer
On The Ohio (Pioneer Song)	Arr. John Coates, Jr.
Gloria	Ariel Ramirez from "Missa Criolla" Arr. Segade



Honor Band Program

Professor Harold L. Hillyer, Guest Conductor-Clinician

March For The Sultan Abdul Medjid	Gioacchino Rossini
Diamond Variations	Robert E. Jager
Liebestod	Richard Wagner
Triptych	Tommy J. Fry
Sonus Ventorum	Claude T. Smith
Down To The Sea In Ships	Robert Russell Bennett
1. The Way of a Ship	
2. Mists and Mystery	
3. Songs in the Salty Air	
4. Waltz of the Clipper Ships	
5. Finale, introducing the S.S. EAGLE MARCH	
March "The Chimes Of Liberty"	Edwin Franko Goldman

Permian High School

Instrumental Music Department

ANNUAL

SPRING

CONCERT

Featuring

ORCHESTRA

CONCERT BAND

SYMPHONIC BAND

MARCH 28, 1972

7:30 P.M.

PERMIAN AUDITORIUM

Conductors

J. R. McENTYRE

TERRY MILLIGAN

Program

ORCHESTRA

- "Fanfare" from la Peri* Paul Dukas
"Arioso" from Cantata 156 J. S. Bach, arr. Fry
Dovetail Overture Robert Muczynski

CONCERT BAND

- March: Winds* Clare Grundman
Jesu, Joy of Man's Desiring J. S. Bach, arr. Leidzen
Symphonic Movement Vaclav Nelhybel

PERCUSSION ENSEMBLE

- Encore In Jazz* Vic Firth

SYMPHONIC BAND

- Symphonic Concert March* G. Bonelli, arr. Falcone
Theme and Variations, opus 43a Arnold Schoenberg
Salvation is Created Tschesnokoff
Triptych Tommy J. Fry
Conducted by the Composer, Tommy Fry
II Gymnopedies E. Satie, arr. Reed
featuring the flute sections from the concert & symphonic bands
Begin the Beguine C. Porter, arr. Krance
March of the Steel Men Charles S. Belsterling

YSLETA INDEPENDENT SCHOOL DISTRICT

presents

SECOND ANNUAL

YSLETA ALL-DISTRICT

Band Concert

conductor

HAROLD L. HILLYER

J. M. HANKS AUDITORIUM

Thursday, December 2, 1971

H "THE TIGHTROPE WALKER" . . . *Thomas Hutcheson*
(1969)

drama of the high wire artists act is contrasted with the excitement and pantry of the big top atmosphere, but a touch of humor may be heard the added beats of alternating rhythms. The fanfare ending can leave doubt in the listener's mind that the tightrope walker has completed his ous journey successfully. The march is dedicated to Harold L. Hillyer, ctor of Bands at the University of Texas at El Paso.

I N T E R M I S S I O N

H "PORTER'S CATALINA
D MARCH" *W. Dwight McCaughey*
(1965)

TYCH *Tommy J. Fry*
(1971)

PTYCH opens with a brilliant percussive fanfare which immediately s way to an Andante setting to the central motif. This modal section ds from a single line to a full band treatment of the melody, then fades he original statement in the flutes. Abruptly, the tempo, dynamics, and racter change as the concluding section, a 2/4 scherzo-like movement, be- s. Multiple meters and mirror harmony characterize this Vivace segment ch concludes in a light-hearted, humorous Coda.

Tommy J. Fry was born in Sweetwater, Texas. He attended McMurray lege in Abilene, Texas where he was awarded his B.S. degree. Mr. Fry been a director of bands in the public schools, and has been very active a guest conductor and band clinician.

MPHONIC PORTRAIT
Band "Cole Porter" *Arr. Wayne Robinson*

e name of Cole Porter immediately brings to mind a quarter-century's put of popular song classics from "Begin the Beguine" to "True Love." rter became one of the top Broadway composers, creating memorable res and the high point of his achievement was Kiss Me Kate.

To open this Symphonic Portrait, arranger Robinson has appropriately osen "Another Opening, Another Show" from Kiss Me, Kate, the Porter ssic which ran 1,077 performances on Broadway. The moody "I Love ris" from Can-Can, a smash show and later a lavish movie starring Frank aatra, Maurice Chevalier, and Shirley MacLaine, is a simple yet haunting lad but for contrast the title song "Can-Can" is rousing and spirited. I've t You Under My Skin" is a Porter gem in his beguine style from the movie rn To Dance with Eleanor Powell while "I Love You" is a stirring ballad m Mexican Hayride which featured the zany antics of Bobby Clark. Com- ting the Porter Portrait is one of the Porter's rare waltzes, "Wunderbar," m Kiss Me, Kate.

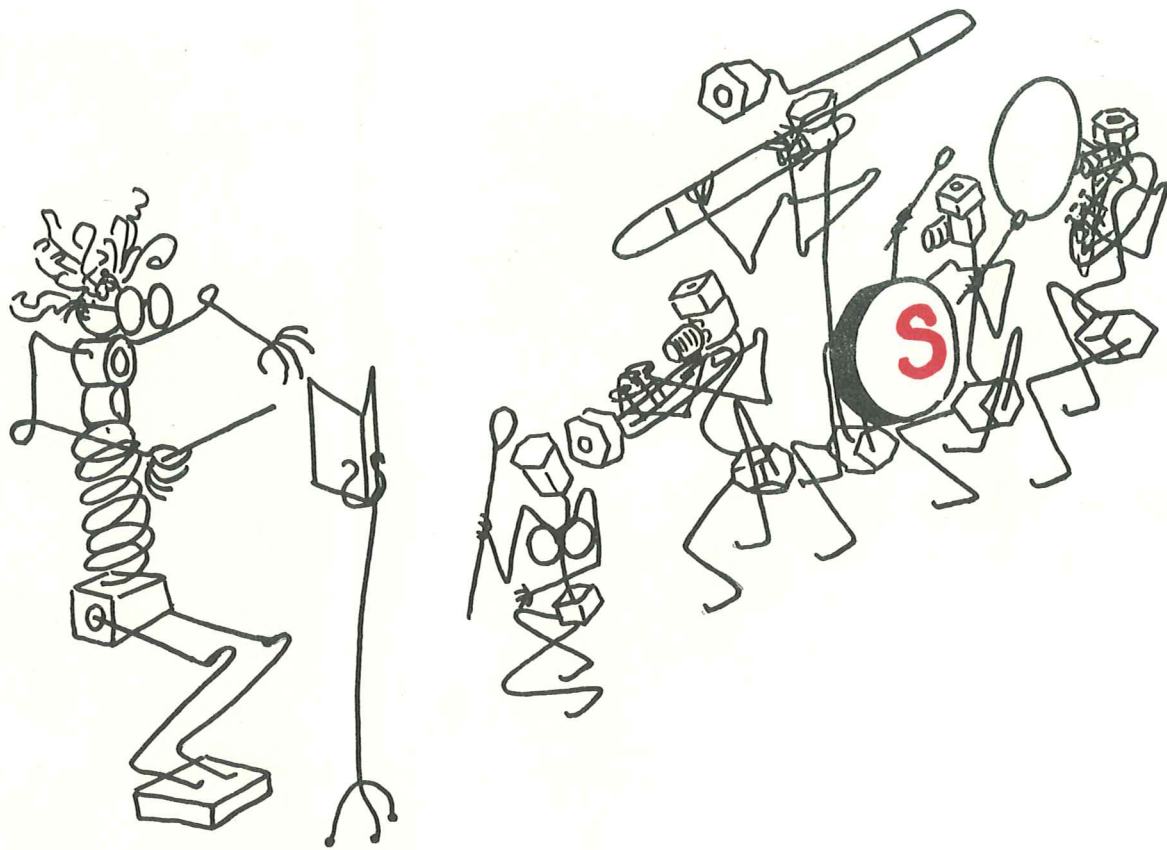
PERCUSSION ESPAGNOLE *Robert Prince*
(1960)

MARCH "THE GALLANT SEVENTH *John Philip Sousa*
(1922)

When it comes to giving an utterly compelling rhythmic pulse to the onward progress of a regiment or other marching group, together with a wonderful upsurge of lyrical songs, John Philip Sousa (1854-1932) remains unparalleled and incomparable. Sousa was in truth the last of a great line of masters of music in the lighter vein which included the Strausses of Vienna, Offenbach and Waldteufel in Paris, Gilbert and Sullivan in London and Hans Christian Lumbye in Copenhagen. Sousa's name ranks high among the American composers whose music has kept its freshness and vitality and has been embraced by the entire world.

The GALLANT SEVENTH was Sousa's 101st march and he first performed it at a gala concert played at the old New York Hippodrome on November 5, 1922. It also marked the 30th season of the Sousa Band.

The Texas Music Educators Association Presents
SEYMOUR HIGH SCHOOL



CLASS AA HONOR BAND IN CONCERT
Miss Barbara Sperberg, Director

February 11, 1971

Music Hall

Houston, Texas

PROGRAM

PASSO DOPPIO SINFONICO Leonardo Marino, arr. Nicholas Falcone

Passo Doppio Sinfonico, an Italian concert march, is melodic and at times intensely lyrical, owing to its heritage of flowing melodies, contrapuntal material and contrasting rhythms. Having two basic tonalities, **Passo Doppio Sinfonico** begins in the key of F Major and changes to Db Major at the trio, then returning to the key of F with a short recapitulation of the original theme which serves as a coda.

LA FIESTA MEXICANA H. Owen Reed

2. Mass

La Fiesta Mexicana, a musical portrayal of Mexican folk songs and social structure was written in 1954 for the U.S. Marine Band. It consists of three movements; tonight the band will play the second movement, the "Mass". With the tolling of the church bells the listener is reminded that the fiesta is a religious celebration. Rich and poor alike gather within the walls of the old cathedral for contemplation and worship. The priest leads the parishioners in prayer, and the movement ends with a quiet amen.

TRIPTYCH Tommy J. Fry

We are proud to present the Texas premier of Mr. Tommy Fry's exciting new work. Having been a band director in Sweetwater, Big Spring and Levelland, Mr. Fry is well qualified to compose for the modern concert band. **Triptych** opens with a brilliant percussive fanfare which gives way to an andante 3/4 setting of the central motif. This haunting quasi-oriental section slowly builds from a single line to a full band treatment of the melody, then fades back to its original statement in the flute. Abruptly, the tempo, dynamics and character change as the concluding section, a 2/4 scherzo, begins. Multiple meters and mirror harmony characterize this **vivace** segment which concludes in a lighthearted humorous coda.

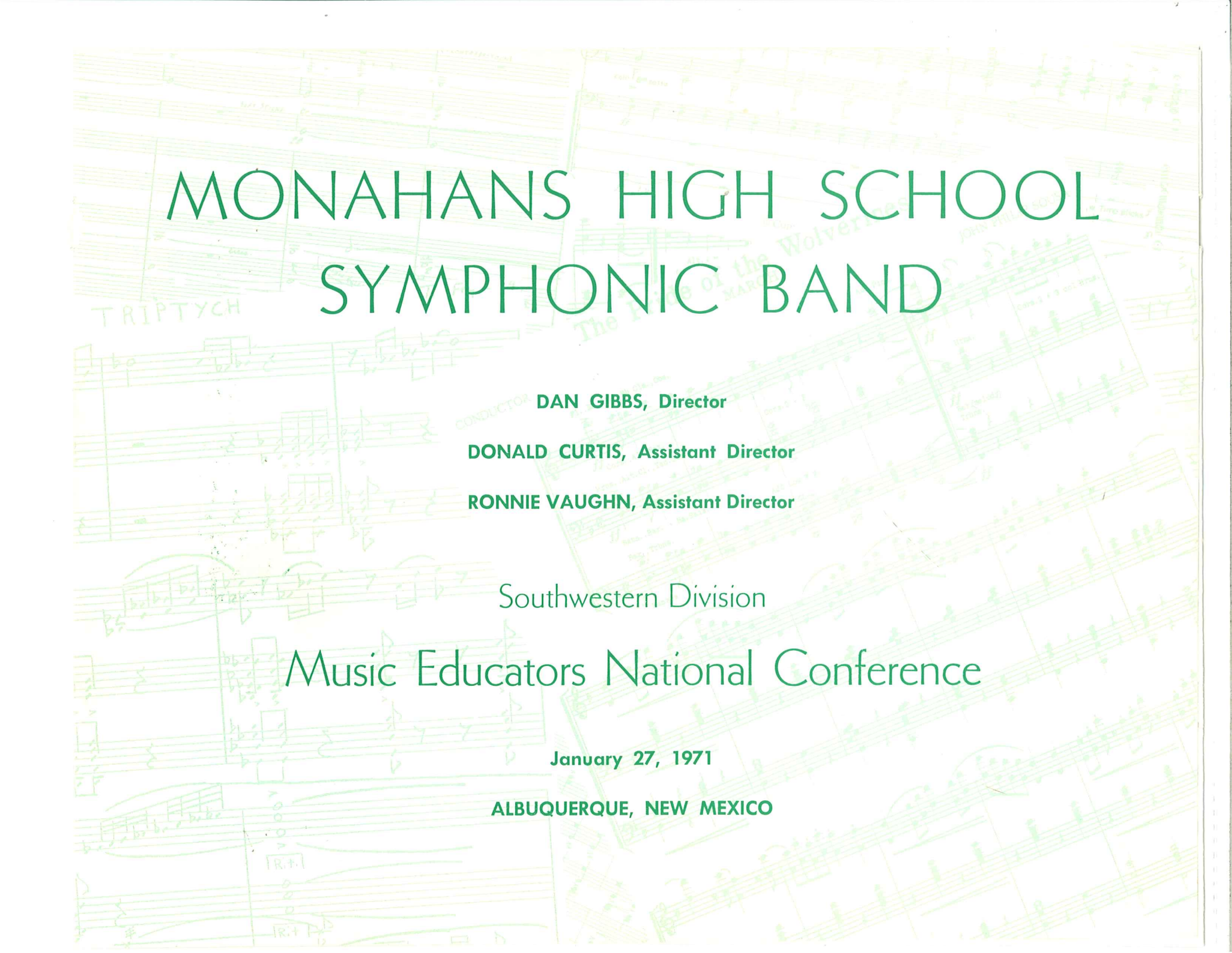
CONCERTANTE Harold Walters

This solo will be performed in unison by the entire tuba section. Soloists are: Mack Bibb, senior; Danny Casselberry, senior; Ward Taylor, junior; Mark Hertel, freshman. Mack and Danny were first division winners at the State U. I. L. Solo Contest in 1970. Mack, Danny and Mark were members of the 1970-71 All-Region Bands. **Concertante** demands technical facility, a wide range and stylistic versatility. It is a light melodic solo which makes it enjoyable both for the performer and for the audience.

SONUS VENTORUM Claude T. Smith

(Sound of the Winds)

Newly released, **Sonus Ventorum** is Claude Smith's most recent composition for band. The opening section, **Largo Maestoso**, is dissonant, yet rich and resonant. The allegro portion, bright, rhythmic and melodic is written in dance form and comes to a resounding climax.



MONAHANS HIGH SCHOOL SYMPHONIC BAND

DAN GIBBS, Director

DONALD CURTIS, Assistant Director

RONNIE VAUGHN, Assistant Director

Southwestern Division

Music Educators National Conference

January 27, 1971

ALBUQUERQUE, NEW MEXICO

Program

PRIDE OF THE WOLVERINES **John Philip Sousa**

One of the finest marches from the pen of America's "march king"

CARMINA BURANA **Carl Orff**

arr. by John Krance

The original score of Carl Orff's Carmina Burana (Cantiones Profane) calls for vocal soli, three choirs, and large orchestra. In arranging the work for concert band Mr. Krance retains the spirit, feeling, and over-all character of the original score. The work begins and ends depicting the crushing anguish of the victims of Fortune's ruthless wheel (O Fortuna; Fortuna Imperatrix Mundi); the remaining sections are devoted to the joys of spring and nature, the pleasures of the tavern and the gaming table, the delights of love, the irony of Fate.

SÄTERJENTENS SÖNTAG **Ole Bull**

arr. by Glenn Cliffe Bainum

A lovely setting for multiple flute solo with band accompaniment of the Ole Bull melody subtitled "A Mountain Shepherdess' Sunday".

TRIPTYCH **Tommy J. Fry**

Guest Conductor, Tommy J. Fry

We are proud to present the premiere performance of Mr. Tommy Fry's exciting new work. TRIPTYCH opens with a brilliant percussive fanfare which gives way to an andante 3/4 setting of the central motif. This haunting modal section slowly builds from a single line to a full band treatment of the melody, then fades back to its original statement in the flutes. Abruptly the tempo, dynamics, and character change as the concluding section, a 2/4 scherzo, begins. Multiple meters and mirror harmony characterize this vivace segment which concludes in a lighthearted, humorous coda. TRIPTYCH was commissioned by the Monahans High School Band in the spring of 1970 and will be released in May of this year by Carl Fischer, Inc.

COLE PORTER,

A Symphonic Portrait for Concert Band **Cole Porter**

arr. by Wayne Robinson

An exciting medley of Cole Porter's most popular compositions

STONEHENGE SYMPHONY **Paul W. Whear**

An outstanding new work composed by Dr. Paul W. Whear, one of the nation's best known composers. The work was first performed by, and dedicated to the Purdue University Symphony Band, Al G. Wright, conductor.

WARREN TRAVIS WHITE HIGH SCHOOL

Eugene Golden, Principal

PRESENTS

WINTER CONCERT

by the

LONGHORN BANDS

INTERNATIONAL BALLROOM - FAIRMONT HOTEL

February 5 - 8:00 p.m.

SYMPHONIC BAND

La Banda Nascente
Still Wie Die Nacht
Second Suite For Band
1. Gigue
2. Dirge
3. Entry

Sbraccia
Spinney
McBeth

Bread Man

Bill Anderson, Conductor

Harris

HONORS BAND

Bill Anderson, Conductor

George Washington Bicentennial March
Divergents
1. Forcefully
2. Lively
3. Romantically
4. Dramatico

Sousa
McBeth

Freischutz Quickstep
Blasenfest

Fry
Fry

Tommy Fry, Guest Conductor

Drums on America
English Dances for Band

Frock-Warrington
Arnold

1. Andante
2. Vivace
3. Mesto
4. Allegro Risolute

WARREN TRAVIS WHITE HIGH SCHOOL

Eugene Golden, Principal

PRESENTS

WINTER CONCERT

by the

LONGHORN BANDS

INTERNATIONAL BALLROOM - FAIRMONT HOTEL

February 5 - 8:00 p.m.

SYMPHONIC BAND

La Banda Nascente
Still Wie Die Nacht
Second Suite For Band
1. Gigue
2. Dirge
3. Entry

Sbraccia
Spinney
McBeth

Bread Man

Bill Anderson, Conductor

Harris

HONORS BAND

Bill Anderson, Conductor

George Washington Bicentennial March
Divergents
1. Forcefully
2. Lively
3. Romantically
4. Dramatico

Sousa
McBeth

Freischutz Quickstep
Blasenfest

Fry
Fry

Tommy Fry, Guest Conductor

Drums on America
English Dances for Band

Frock-Warrington
Arnold

1. Andante
2. Vivace
3. Mesto
4. Allegro Risolute

PROGRAM

- "The World is Waiting for the Sunrise" Arr. Harry L. Alford
Mr. Roger Loyd, Baritone soloist
- "Chaconne" from "First Suite for Military Band" Gustav Holst
Conducted by Mr. Bill Spencer, Class of 1961 (1874-1934)
- "Estampie" Vaclav Nelhbel
Conducted by Mr. James Pollard, Class of 1955
- "Freischutz Quickstep" Claudie Grafulla
(Arr. by Tommy J. Fry) (1810-1880)
Conducted by Mr. Walter P. Chalcraft, Class of 1949
- "Fandango" Frank Perkins
(1918-)
Conducted by Mr. Jerry C. Tate, Class of 1957
- "Comedians' Gallop" Dmitri Kabalevsky
Conducted by Mr. Ted James, Class of 1952 (1904-)
- "Blasenfest" Tommy J. Fry
(1934-)
Conducted by the composer, Mr. Tommy J. Fry, Class of 1955
- "The Stars and Stripes Forever" John Philip Sousa
(1854-1932)

dddddddddddddd

THE MCMURRY COLLEGE BAND
Dr. Raymond T. Bynum, Conductor

presents

A CONVOCATION CONCERT

of

original and traditional band music

with

six of our esteemed McMurry graduates

conducting

and climaxed by the playing of an

original composition

"BLASENFEST"

conducted by the composer, Mr. Tommy Fry

dddddddddddddd

Radford Auditorium, March 19, 1968, 9:30 in the morning

"The World is Waiting for the Sunrise" (popular song of the twenties by Lockhart and Seitz) is arranged here for military band as a dramatic march paraphrase. The baritone variation has long been a challenge to performers.

~~~~~

Gustav Holst, English composer, conductor, organist, and teacher, became interested in band as a musical medium and in 1911 composed the "First Suite for Band" (three movements). The Chaconne here presented follows the traditional triple meter variations heard throughout the sections of the band of the Baroque Spanish (or French) dance form.

~~~~~

Vaclav Nelyhbel, born in Czechoslovakia and now an American citizen is a free-lance composer and conductor in New York. Some operatic works have received significant recognition and his compositions for band in the last five years are currently "IN." The Estampie was a medieval dance form in which soloists alternated with the group, singing and dancing in a kind of "round." In "Estampie" the form is old but the feeling is contemporary. At least this piece is "different."

~~~~~

Grafulla, the composer of "Freischutz Quickstep", was bandmaster of the 7th Regiment Band in New York and wrote this number about 1882. It is one of the few examples of Civil War band music extant in original manuscript. The arrangement here presented is by Mr. Tommy Fry of Odessa, McMurry graduate of 1955. (More about Mr. Fry later.)

~~~~~

"Fandango" is as typically Spanish as the dance itself and with castanets and tambourine catches the fiery spirit of Old Spain. The melodies are warm and rich and the accompaniment is brilliant and bold.

Dmitri Kabalevsky is currently teacher of composition in the Moscow Conservatory. His opera "Colas Breugnon" (1937) had success and the overture was premiered in this country by Toscanini in 1943. The "Comedians' Gallop" is from a suite "The Comedians" (opus 26). Mr. Frank Fuller is xylophone soloist.

~~~~~

Tommy J. Fry, living and composing in Odessa, Texas, has attained recognition among band directors as one of the promising young composers of our Southwest. He trained in McMurry College to become a band teacher and has had a number of years of success in his chosen field. "Blasenfest" is a unique concert piece for band. The texture of the instrumentation is contemporary; the harmonic structure is an extended traditional harmony with melodic content and dramatic contrasts in tempi and dynamics. (We here at McMurry are exceedingly proud of Mr. Fry and welcome him here today along with these other music men.)

~~~~~

John Philip Sousa, known as "The March King" made the maximum contribution to the music and to the dignity of the concert band. His compositions include many types, but his marches are known and loved the world over. The "Stars and Stripes Forever" is the "unofficial" march of our country, and the McMurry College Band traditionally closes most concerts with its performance.

"The man that hath no music in himself,
Nor is not moved with concord of sweet sounds,
is fit for treasons, stratagems, and spoils;
The motions of his spirit are dull as night,
And his affections dark as Erebus,
Let no such man be trusted."

William Shakespeare's "Merchant of Venice"
Act V, Scene 1

THE UNIVERSITY OF TEXAS SYMPHONIC BAND

† WILLIAM J. MOODY, *Director*

<i>Flutes</i>	† Paul Backlund (<i>E♭ clarinet</i>)	<i>Cornets</i>	Tom Waggoner
Jeanie Weger	Tom Shine	Carole Herrick	Lester Kegley
Mary Jeanne Rouré	James Balentine	James Gibson	Wallis Smith
Cheryl Musket (<i>piccolo</i>)	Debbie Thompson	Walter Stricklin	Hugh Sparks
Ann Wilson	Kitty Walker	John Indo	<i>Euphonium</i>
Beatriz Perez	Philip Johnson	Pete Turner	Mickey Pickett
Paulette Rainey	Marie Louise Diou	Scott Taylor	Joe Nelson
Virginia Howard	Rick Pavlas	Jorge Madrigal	Eddie Gilden
Lynda Strimple	Carolyn Brackeen	Earl Rhea	<i>Tubas</i>
Sharon Watkins	<i>Bass Clarinet</i>	Verda Herrington	Lester Oliver
<i>Oboes</i>	Carol Whiting	<i>Horns</i>	Rick Dillard
Jacque Gibson	Robert Rodriguez	Lorin Larson	Paul McCormick
Ray Tyler	Michael Tierney	Steven Price (<i>Asst. 1st</i>)	<i>Percussion</i>
<i>Bassoons</i>	<i>Saxophone</i>	Angelica Lopez	Emery Alford
Bill Whitener	Walker Smith	Donna Mathews	Bruce Hoffman
Darlene Peterson	Sharron Puryear	James Baker	Carleton Hoffman
<i>Clarinets</i>	Donnie Supak (<i>tenor</i>)	<i>Trombones</i>	Linda McDavitt
Doug Graham	Kenneth Williams (<i>baritone</i>)	Nick Gonzales	Gerald Walker
Bruce Elliot		Terry Rawlins	† George Frock
Jeanne Shipley		<i>String Bass</i>	David Sloan

† *Faculty member, Department of Music*

The Department of Music

STUDENT ORGANIZATIONS CONCERT SERIES

The University of Texas
SYMPHONIC BAND

WILLIAM J. MOODY, *Conductor*

SOLOIST:

“DOC” SEVERINSEN

Trumpet



Sunday Afternoon, NOVEMBER 12, 1967 at 4:00

AUSTIN MUNICIPAL AUDITORIUM



Carl "Doc" Severinsen

"Among the elite of professional musicians who command the top fees, "Doc" Severinsen is acknowledged to be the finest trumpeter today."—(*Command Records*)

Formerly 1st trumpet with Tommy Dorsey, Benny Goodman, Charlie Barnet, Vaughn Monroe and many others, he is now the conductor, musical director, and soloist with the Johnny Carson *Tonight* show.



The appearance of "Doc" Severinsen on this program is made possible through the cooperation of

J. R. REED MUSIC COMPANY

PROGRAM

William Byrd Suite Arr. Gordon Jacob
 No. 1. The Earle of Oxford's Marche
 No. 3. Jhon Come Kisse Me Now
 No. 4. The Mayden's Song
 No. 6. The Bells

From Every Horizon Norman Dello Joio

Concerto for Trumpet Floyd Werle

"Doc" Severinsen, *Trumpet*

INTERMISSION

The Sinfonians Clifton Williams

Variations on a Korean Folk Song John Barnes Chance

My Man's Gone Now Arr. Rhoads
 Fantasy for Trumpet Claude Smith

"Doc" Severinsen, *Trumpet*

Blasenfest Tommy J. Fry

Ushers provided by Phi Mu Alpha Sinfonia

QUACHITA BAPTIST UNIVERSITY
ARKADELPHIA, ARKANSAS

March 27, 1967

Mr. Tommy Fry
May & Duncan Music Company
420 North Texas
Odessa, Texas

Dear Tommy:

I have used the "Freischutz Quickstep" with four region bands and an all-state so far. I told you I would play it for you. It has received good reception everywhere I have used it and I hope it has sold some copies. I know it has here in Arkansas. I will send you a tape on it one of these days from the Arkansas All-State.

Received the hinged tape and appreciate it so much.

Pardon the short letter, but just wanted to let you know about the "Quickstep". Give my regards to all the Odessa group.

Best wishes,



W. Francis McBeth, Chairman
Department of Theory-Composition

ac

SNYDER HIGH SCHOOL CONCERT BAND

MELVIN MONTGOMERY, Director

CHARLES SHAW, Assistant Director

Texas Music Educators Association
Honor Band Concert

FEBRUARY 11, 1966

DALLAS, TEXAS



Program

Concert Suite ----- *Frederic Ashe*

This contemporary work in three movements was the 1963 Ostwald Award winning composition. Mr. Ashe is Professor of composition at the University of Miami.

I. Fanfare and Scherzo

II. Andante Religioso

III. Allegro Vivace

William Byrd Suite ----- *Gordon Jacob*

William Byrd (1542-1625) was known for his choral and keyboard music and was one of the founders of the English Madrigal School. This suite is based on some of his pieces taken from the Fitzwilliam Virginal Collection and was adapted for the modern wind band by Gordon Jacob.

I. The Earl of Oxford's Marche

III. Jhon come kisse me now

V. Wolsey's Wilde

VI. The Bells

Melvin Montgomery, Director

The Free Lance March—"On To Victory" ----- *John Phillip Sousa*

One of the finer more obscure marches from the pen of the "March King". This march has been recorded by the University of Michigan Symphony Band under the direction of William Revelli.

Latin Lament ----- *Fred Kepner*

This beguine for band was written by Fred Kepner for the U. S. Air Force Band in Washington. It has been performed with great success by this band, where Mr. Kepner is a staff arranger.

Charles Shaw, Director

Blasenfest ----- *Tommy Fry*

It is our pleasure to premiere this exciting work by Texas composer Tommy Fry. Mr. Fry has been a former band director at Sweetwater, Big Spring and Levelland. He is currently employed by the May-Duncan Music Company in Odessa, Texas. This is his third published work for band and is slated to be released this month.

Crosstalk ----- *Tim Dennis*

This original composition was written to feature both the concert band and the stage band. Its composer, Tim Dennis, was a former member of the music staff at Snyder for eight years, where he served as junior high school band director and arranger for the high school band and stage band. He is currently a free lance arranger, recording engineer, and musician in the Dallas area.

Melvin Montgomery, Director



FREISCHUTZ QUICKSTEP

Claudio Grafulla (1810-1830)
Arr. by Tommy J. Fry

Symphonic Band Personnel

FLUTES

+†*McEntyre, Marcia
+†Dean, Robbie
+†*Whitlock, Becky
+Crews, Nancy
+†Worley, Merry
+Bush, Jerry
McDaniel, Susan
Hopwood, Penny
Greenwood, Peggy
Parsons, Mickey
VanDeman, Karen
Lee, Virginia
Schnaubert, Pam
Justice, Debbie

CLARINETS

+†*Law, Steve
+†Dowden, David
+†Harmon, Carolyn
Heinritz, Mike
+Lindsay, Richard
Jacobs, Carol
+Stoehr, Richard
+Blasi, Barbara
Burkhalter, John
+Roe, Janie

Goode, John
Hann, Judy
Hinkle, Hershal
Tucker, Donna
Tinsley, Alice Ann
Reed, Linda
Chancellor, Mike
Buckner, Shelly
Nunley, Jimmy
Crownover, Cathy

ALTO CLARINETS

+†Shutt, Bette
+Matthews, Babs
Ward, Linda

BASS CLARINETS

+Williams, Linda
Meek, Peggy
Moore, Susan

CONTRA BASS CLARINET

Cranfill, Christy

OBOES

+Smith, Susan
Smith, Rosemary

BASSOONS

+†Pettit, Ann
Hutchison, Judy
+Campbell, Sarah

ALTO SAXOPHONES

+†*Joiner, Charles
+Cass, Bill
Cooper, Julie
Presley, Lynn

TENOR SAXOPHONES

+†*Bowman, Gary
Wright, Travis

BARITONE SAXOPHONES

+†Aranda, Pete
Pugh, Freddie

CORNETS

+†Reneau, Walter
+†Ludwig, Dennis
+Clardy, Dick
+Handley, Ed
+†Dotson, Nelson
+Mailea, Steve
+Tucker, Eddie

Anderson, Mike
Rogers, Bill
Warren, Bill
Griffin, Mark
Salyards, Don
Lawrence, Lonnie

HORNS

+†*Love, Jimmy
+Evans, Roger
Spence, Charles
Spinks, Jo
Boone, Brenda
Simpson, Charles

TROMBONES

+†*Burnett, Kenny
+†*Perry, David
+†Handley, Fred
Miller, Rick
Harrison, Ted
Harper, Bland
McDonald, Jim
Dunn, John
McDonald, Bill
McCrory, Scott

BARITONES

+†*Beard, Greg
Colter, Scott
Smith, Richard

TUBAS

+†*Cooke, Rex
+Sterle, Roger
Hoback, Stephen
+Gladden, Ralph

STRING BASS

*Smith, Steve

BASS DRUM

Wolsch, Bruce

SNARE DRUMS

+Root, Charles
Vandever, Cheryl

TYMPANI

Kelly, Richard

UTILITY PERCUSSION

Schnaubert, Kathy
Thompson, Bobby

+ = All District
† = All Region
* = All State

Stage Band Personnel

SAXOPHONES

Joiner, Charles
Law, Steve
Bowman, Gary
Shutt, Bette
Aranda, Pete

TROMBONES

Handley, Fred
Burnett, Kenny
Perry, David
Harrison, Ted
Harper, Bland

TRUMPETS

Reneau, Walter
Handley, Ed
Ludwig, Dennis
Clardy, Dick
Dotson, Nelson

HORNS

Love, Jimmy
Spence, Charles

STRING BASS

Cooke, Rex

PIANO

Schloer, Jolena

GUITAR

Hunter, Dee

TRAPS

Root, Charles

VIBES

Schnaubert, Kathy

Concert Band Personnel

FLUTES

Vacca, Dawn
Garrett, Carla
Higginbottom, Cynthia
Terry, Peggy
Grigson, Gayle
Lasseter, Jan
Troop, Judy
Denison, Susan
Sadler, Cindy
Spinks, Susan
Guthrie, Sherri
Garner, Gwynel
Smith, Gail
Harmon, Joy

CLARINETS

VanMeter, Sandy
Lasseter, Jill
Little, Pattie
Kelley, Sherry
Virgili, Linda
Gillespie, Debbie
Hall, Dianne

Richardson, Tommie Jean
Horner, Teresa
Hooks, Elaine
Francis, Sue
Smith, Paula
Rix, Suzanne
Holder, Vicki
Stone, Nancy
Boyd, Linda
Gooden, Alton

BASS CLARINETS

Robertson, Leeann
Fillyaw, Jo
Fenton, Kathy

ALTO SAXOPHONES

Galloway, Jerry
Virgili, Dawn
Francis, Janie
Kelsey, Kaye
Williams, Carolyn
Butler, Donna
Michaels, Charles

Lee, Janet
Griffin, Russell

TENOR SAXOPHONES

Wood, Jim
Stevens, Tim

BARITONE SAXOPHONE

Brott, Lowry

CORNETS

Clay, Ricky
Manley, Scott
Harrison, Glenn
Taylor, Johnny
Rogers, Carl
Wyatt, Sid
Austin, Alan
Bowling, Bobby
Hutchison, Buddy
Gray, Larry
Leo, Charles
Swindell, Don
Alvey, Danny

HORNS

Worthen, Sherry
Jones, Brenda
Gummelt, Betty
Hergert, Craig

TROMBONES

Tarver, Danny
Lasseter, Randy
King, Bob
Williamson, David
Walette, Bob
Fox, David
Hollcroft, Mike
Lockett, Dale
Harrison, Stephen
Flowers, Gary
Banta, Ronnie
Jensen, Gary
Cupp, Wayne

BARITONES

Cook, Curtis
Mitchell, Scott
Schul, Pat
Taylor, Dan
Langford, Richard

BASSES

Boone, Loyd
Collier, Roy
Mitcham, Dickie
Joiner, Jerry

PERCUSSION

Minyard, Bill
Hadden, Sandy
Schooler, Lee
Hughes, Russell
Hancock, Roger
Cotten, Bill
Hamilton, Mike

PERMIAN HIGH SCHOOL
Instrumental Music Department

PERMIAN BANDS
Annual Spring Concert

Featuring
CARL "DOC" SEVERINSEN
GUEST ARTIST

CONCERT BAND
SYMPHONIC BAND
STAGE BAND

Conductors
J. R. McENTYRE
SAM J. KNEPLEY

MONDAY
APRIL 3
8:00 P.M.
PERMIAN AUDITORIUM

© Copyright 1986 in all Countries by FAR WEST MUSIC - Los Angeles, California, USA

Program

Concert Band

- Simbolo March Luis Casas
"Simbolo" (Symbol) was written in 1945 by Cuban composer Luis Casas.
- Aylesford Variations Theron Kirk
The theme of "Aylesford Variations," a quiet melody with the flavor of an English folk song, was suggested by the peaceful scene of Aylesford - an old English bridge over a very quiet river. Written in six parts, the theme is first stated followed by five variations.
- Born Free Berry, Black, Miller
Main theme from the recent Colombia Pictures release, "Born Free."

Symphonic Band

- Joyces 71st. New York Regiment March Boyer - Lake
This old favorite follows the pattern of many early marches written especially for a military unit.
- La Fiesta Mexicana H. Owen Reed
Composer H. Owen Reed was born in Odessa, Mo. and is presently head of theory and composition departments at Michigan State University.

★ ★ ★

The Mexican feels an inner desire to express love and honor for his religion. La Fiesta Mexicana attempts to portray one of the "Fiestos" and is divided into 3 movements. This evening, the band will perform 2 of these movements -

- I. AZTEC DANCE - Portrays Aztec Dancers, brilliantly plumed and masked who dance in an increasing frenzy to a dramatic climax.
- III. CARNIVAL - Mexico is at its best on the days of the Fiesta - a day on which passion governs love, hate and joy of the Mestizo and the Indio. There is entertainment for both young and old - the itinerant circus (first portion of movement), the market, the bull fight, the town band, and always the "cantinas" with their band of "Mariachis" - on the day of days; FIESTA.

- Concerto for Trumpet Ralph Hermann
Ralph Hermann, composer - arranger for N. B. C. studios in New York City, has written an interesting showpiece for solo trumpet and band. Written in traditional concerto form with three movements, the first and last movements are fast-moving and rather technical while the second movement is quite melodic in nature.

- Portrait of a Trumpet Sammy Nestico
Respectively dedicated to the memory of Conrad Gozzo, a trumpet player admired by all who play this instrument, "Portrait Of A Trumpet" is lush in harmonic content with beautiful melodic lines.

★ ★ ★

INTERMISSION

★ ★ ★

Stage Band

- It Might As Well Be Swing Terry Gibbs
An original by Terry Gibbs, well know Vibe player.
Vibe Solo by Kathy Schnaubert. Piano Solo by Jolena Schloer.
- Doc's Holiday Sammy Nestico
Written by Marine Band Staff arranger Sammy Nestico especially for Doc Severinsen, this number uses three jazz styles (Gospel Swing, Jazz Waltz, and Go Samba) showing the versatility of guest artist Carl "Doc" Severinsen.
- Sunday Morning Neal Hefti
A Gospel Swing in the pleasant style of composer Neal Hefti.

Symphonic Band

- Fandango Perkins - Werle
Written in a typical Spanish style with exciting rhythms and beautiful flowing melodic lines.
- Frieschutz Quickstep Grafulla - Fry
The "Freischutz Quickstep" is one of the earliest examples of the march paraphrase and the content includes six themes from the opera "der Freischutz" by von Weber. Composer Claudio Grafulla was bandmaster of the Seventh Regimental Band of New York. This march was written for the Third New Hampshire Regimental Band about 1862 and is one of the few examples of Civil War band music in original manuscripts. This is one of several published works of composer - arranger Tommy J. Fry of Odessa, Texas. It has been dedicated to our own band the Permian High School Band of Odessa. It is with great pride that the band performs this work on the program. You will note that the cover is the original manuscript.
- Dialogue for Trumpet John Krance
John Krance was commissioned by the Getzen Co. Inc. to write this solo. It is highly demanding for both soloist and band. Many interesting effects are achieved by the composer, making this a very interesting work.
- Carnival of Venice Del Staigers
Probably the most well known of all trumpet solos, Carnival of Venice is written using a well known theme with variations. The variations are highly technical. All young aspiring trumpet players "live" for the day they can play this solo. Few make it.

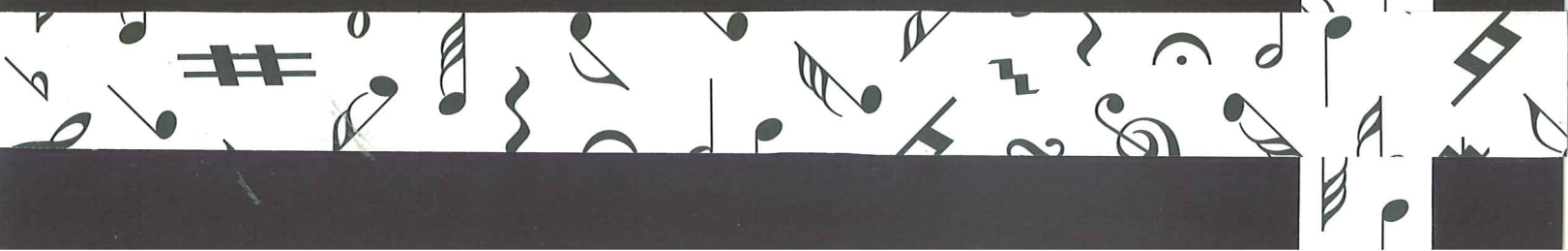
ADMINISTRATION

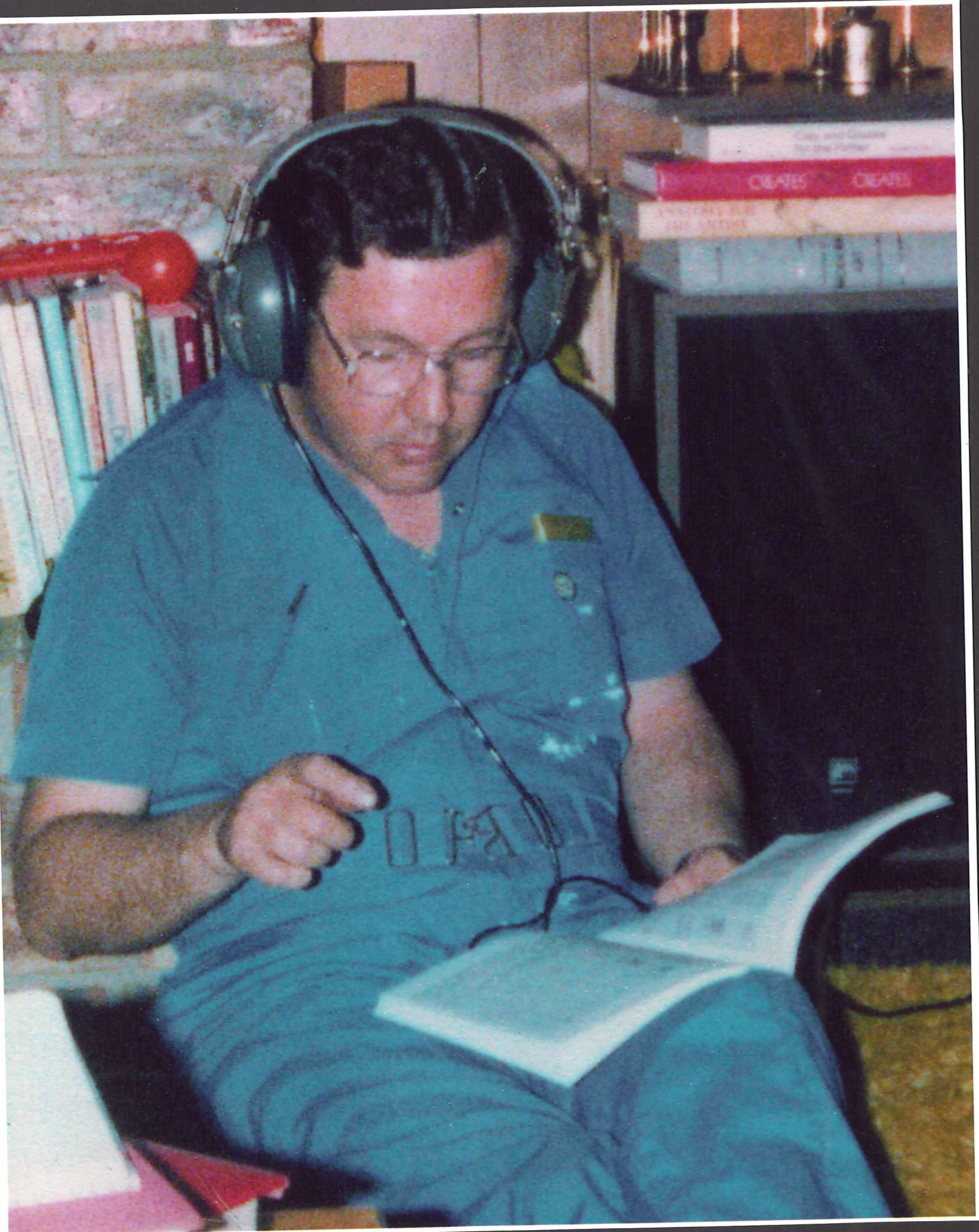
- Superintendent Floyd Manry
Principal C. Gail Smith
Music Supervisor Robert L. Maddox

INSTRUMENTAL MUSIC STAFF

- Bonham Band Director, Larry Smith
Hood Band Director, Wayne Maxwell
Nimitz Band Director, George Virgili
Permian Band Directors, J R. McEntyre
Sam Knepley

Publications





THE
CARL FISCHER
BAND

Heritage

AN
ANNOTATED
CATALOG

Louis-Claude DAQUIN

b. Paris, 1694; d. Paris, 1772; Daquin, a child prodigy, performed on the clavecin when but six years old. At age twelve he started a career as a church organist, culminating in his appointment to the Chapel Royal in 1739. He wrote many harpsichord pieces, noëls, and motets, most of which still exist only in manuscript form.

NOËL SUITE

This set of four movements (Andante, Allegro, Allegretto, Allegro) can be enjoyed at any time of year. The noël, as composed from the sixteenth through the eighteenth centuries, is unlike most music of the period in that it has no set form and tempo, neither is its style strictly homophonic nor polyphonic. They were usually simple variations on popular Christmas carols. This practical arrangement by Philip Gordon offers a young band an attractive Baroque selection. ca. 3 minutes Grade 2 J581

Joseph DE LUCA

b. unknown; d. Tempe, Arizona (?), 1936; Joseph de Luca enjoyed a distinguished career as a performer, conductor, composer, arranger, and educator. For many years he was a performer and soloist (euphonium and trombone) with prestigious organizations, such as the Sousa Band (eight seasons, soloist and guest conductor), the Philadelphia Orchestra, the Victor Herbert Orchestra, and the Pennsylvania Grand Opera Company. He composed and arranged a large quantity of music, especially marches, for bands. In his last years, he was the Director of University Bands at the University of Arizona, and conductor of the Tucson Symphony Orchestra.

BEAUTIFUL COLORADO (Valse Caprice)

(Solo for Trumpet, Saxophone or Baritone with Band Accompaniment)

Here is a lovely selection with which to feature young instrumentalists who have a fluid dexterity and skills of articulation and phrasing. This arrangement by Charles Roberts begins with an Andante introduction and spotlights an effective cadenza before the waltz appears. ca. 3 min. 30 sec. Grade 3 J698

Camille DE NARDIS

b. Orsogna, Italy, 1857; d. Naples, 1951; He received his musical education in Naples where he was a student of N. d'Arienzo. During his lengthy career, de Nardis held the posts of Vice-Director of the Naples Conservatory, Director of the San Carlo Theatre, and conductor of the Quartet Society. In addition, he was an active editor of 18th-century opera music. His compositions include opera, oratorio, and choral works; however, he is best known in this country for his tone-poem, *The Universal Judgment*.

THE UNIVERSAL JUDGMENT (Symphonic Poem)

The work consists of several well-contrasted sections: a quasi-fugato Allegro con Fuoco, a Moderato Assai (depicts the heavenly host), a Maestoso, and a Chorale. This dynamic symphonic expression won first prize in a national competition held in Naples (1878). Antonio Cafarella prepared this arrangement especially for the Goldman Band. ca. 9 minutes Grade 5 J321

Paul DUKAS

b. Paris, 1865; d. there, 1935; Upon completion of his studies at the Paris Conservatory in 1818, he was awarded the Second Prix de Rome. At various times during his life he was professor of composition at the Paris Conservatory and the École Normale de Musique. In addition, he was an active music critic, and assisted in the revision and editing of Rameau's complete works. Even though his compositional output was small, Dukas is a famous representative of the refined French style, exemplified by such works as *The Sorcerer's Apprentice*.

THE SORCERER'S APPRENTICE (Scherzo)

This famous work (1897) was inspired by a popular folk tale (used by Goethe in one of his ballads). The story is about a young apprentice who, while his master is away, makes unauthorized use of his master's spell book. Being inexperienced, he loses control over the magic and the result is pandemonium. Dukas' music, so familiar to many as the background to the animated film by Walt Disney, has been splendidly transcribed by Lucien Cailliet. ca. 7 minutes Grade 5 J458

Antonin DVOŘÁK

b. Mulausen, Czechoslovakia, 1841; d. Prague, 1904; From inauspicious beginnings as a violist at the National Theatre in Prague (1861-71), Dvořák gained recognition with his composition *Hymnus* (1873), and his appointment as organist to a prestigious church. Soon after the Austrian State Prize was conferred for his *Symphony in E Flat* (1875), he was appointed professor of composition at the Prague Conservatory. As his fame spread, he accepted numerous invitations to conduct abroad, and from 1892 to 1895, he served as the Director of the National Conservatory in New York. Thereafter, he resumed his post at the Prague Conservatory which he held until his death.

Dvořák's works, although lacking innovation, are skillfully modeled after classical forms. He is considered to be one of the slavic "Nationalist" composers owing to his interest in east European folk songs.

FINALE

"From the New World" Symphony

This is the famous fourth movement from Dvořák's symphonic masterpiece. It was given the sub-title "From the New World" owing to the fact that it was composed and premiered in the United States (1893), and bears some influences of Negro spirituals. This transcription by Erik Leidzén, originally for the Goldman Band, contains an optional cornet solo. ca. 9 minutes Grade 4 J328

John EDMUNDS

b. Cheraw, South Carolina, 1928; Since earning his music degrees from Florida State University, the University of Florida, and the U.S. Naval School of Music, Edmunds has had a wide range of experience as a professional musician, composer, teacher, and band director on both secondary school and college levels. He currently serves on the faculty of Louisiana State University (Baton Rouge) as professor of music theory and as arranger for the LSU Band.

BRITANNIA

(An English Folk Rhapsody)

Written in memory of Sir Winston Churchill, this single-movement work is based on four English folk songs: "O God, Our Help in Ages Past," "The Maid of Amsterdam," "Flow Gently, Sweet Afton," and "Rule, Britannia." The full ensemble scoring, abundance of contrapuntal interest, and contrasts of tempo and tonality make this an ideal program or contest number. ca. 5 minutes Grade 3 J622

Sir Edward ELGAR

b. Broadheath, England, 1857; d. Worcester, 1934; Elgar received his musical education from his father, a church organist. He spent his early years as a conductor and bandmaster, and succeeded his father as organist at the Catholic church in Worcester in 1885. Fame followed the successes of the oratorio *The Dream of Gerontius* (1898) and his orchestral *Enigma Variations* (1899). His *Pomp and Circumstance* marches (1901-30) were all received enthusiastically. The first of these became Elgar's most famous piece through a setting to words by A.C. Benson ("Land of Hope and Glory"). Lionized by his native England, he was knighted in 1904; he received honorary degrees from the universities of Cambridge, Oxford, and Yale, to name but a few. In 1924, he was appointed "Master of the King's Musick."

POMP AND CIRCUMSTANCE Op. 39, No. 1

This famous and widely used processional and recessional march is available in two arrangements which vary in difficulty. Paul Sterrett's arrangement is simply a transposition of the original. Howard Akers' arrangement, part of the "Achievement Band Series," is designed for younger bands. ca. 6 minutes Grade 3 Sterrett-J539 Akers-ABS6

Frank ERICKSON

b. Spokane, Washington, 1923; In 1951, he earned his Masters of Music degree at the University of Southern California where he had studied theory and composition under Halsey Stevens. He has served on the faculties of U.C.L.A. and San Jose State University, and has been an editor for several music publishers. He currently has over one hundred published works for band to his credit.

CHORALE FOR BAND

This melodious piece for concert band is instantly appealing. Moderately easy, this work in a simple song form features a striking contrast between the brass and woodwind sections, and the flowing andante tempo further facilitates reading. ca. 3 min. 15 sec. Grade 3 J590

Henry FILLMORE

b. Cincinnati, 1881; d. Miami, 1956; The son of a Cincinnati music publisher, Fillmore received his training in that city's College of Music, and by the 1920's had gained national recognition as a prominent bandmaster. The Fillmore Band, formed in 1915, was one of the first to make regular radio broadcasts (1927-34). His renown as a composer of popular marches—many of which he published under various pseudonyms—is rivaled only by that of John Phillip Sousa. Although officially "in retirement", he appeared as a guest conductor with bands at the University of Miami and the Miami public schools from 1938-56.

AMERICANS WE (Concert March)

Teamed with the new Carl Fischer publication of *His Honor*, this famous march is likewise available in a quartet format for the first time. Here also, Frederick Fennell's editing has clarified ambiguities in dynamics and nuances, supplied a single-line part for each percussion instrument, and provided appropriate parts for the contrabass clarinet, string contrabass, and kettle drums.

These new editions of *His Honor* and *Americans We* are truly a must for all Fillmore fans. ca. 3 minutes Grade 3 CB113

HIS HONOR (Concert March)

For the first time since its original publication, this famous march is available in a quartet format. The instrumentation has been augmented and editorial clarifications supplied by Frederick Fennell, one of America's foremost band conductors. In the preface, Fennell presents the composer's own ideas on interpretation and performance which Fennell had learned from his personal contact and performances with Henry Fillmore. ca. 3 minutes Grade 3 CB112

MILITARY ESCORT (Concert March)

This regimental march remains a classic example of effective and disarming simplicity. Writing under the "Harold Bennett" pseudonym, Fillmore included *Military Escort* in what became the famous *Bennett Band Book No. 1: A Collection of Original Compositions for Band* (1923) when organized instrumental music instruction and participation were in their infancy. Frederick Fennell has edited this new quartet-sized publication for concert band. ca. 3 min. 30 sec. Grade 2 CB114

Carl FRIEDEMANN

b. Muncheln, Germany, 1862; d. Bern, Germany, 1952; Following the completion of his musical training in Berlin, he was appointed conductor of the Freiberg Symphony Orchestra. He expanded his activities to education and administration and accepted the post of musical director at the Bern Conservatory. During his long tenure there of several decades, he became active as a composer, writing a large quantity of instrumental and choral music.

SLAVONIC RHAPSODY

As the title suggests, this work contains warm, gipsy-like melodies enfolded in Romantic gestures. The scoring in this arrangement for modern concert band by M.L. Lake and H.R. Kent emphasizes individual instrumental color, and includes solos for clarinet, horn, and cornet. ca. 5 minutes Grade 3 J200

Tommy FRY

b. Sweetwater, Texas, 1933; He was awarded a trumpet scholarship at McMurray College where he earned a B.S. in Music Education. In 1955, he was the trumpet soloist for the McMurray College Band's European tour. Following graduation, he spent six years as a director in the Texas public schools. Since 1961, he has been a music buyer for May and Duncan Music, Inc., for whom he has made over two hundred and fifty appearances as a guest band conductor and clinician. All of his works for band and orchestra since 1962 have been written on commission.

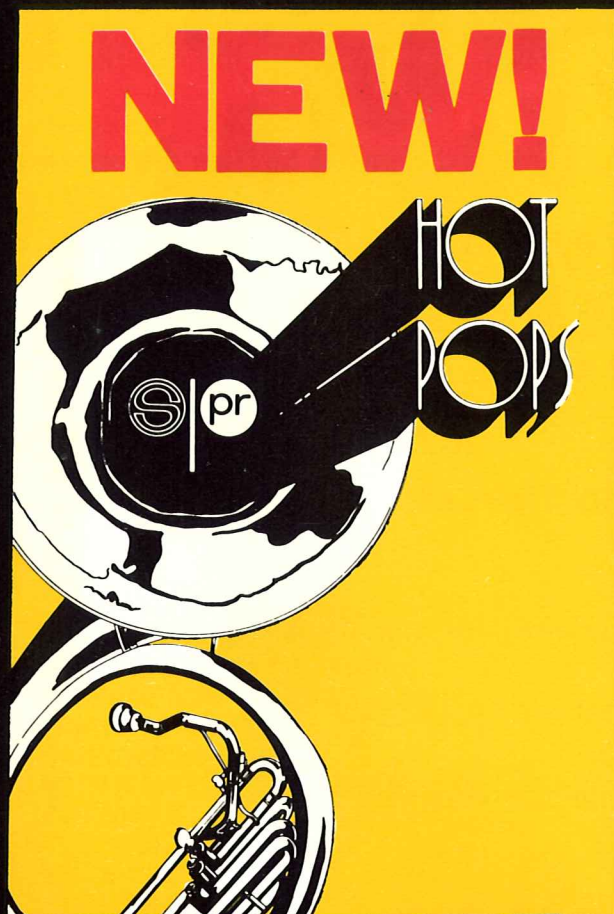
BLASENFEST

Written for the occasion of an Honor Band Concert at the Texas Music Educators Association Conference (1965), *Blasenfest* is a practical, contemporary-sounding work that can be quickly learned. There is a solo passage for cornet and some effective writing for the percussion section. It is perfect for a young band! ca. 3 minutes Grade 3 J661

TRIPTYCH

Premiered at the Music Educators National Conference in 1971, this work contains fanfare and humor in its outer sections in contrast to the modal, waltz-like middle section. The instrumental writing is quite idiomatic, thereby helping to reduce rehearsal time. ca. 6 minutes. Grade 3 J658

exciting new
MARCHING BAND
MUSIC for 1976/77!!



by:

jim curnow

mike leckrone

tom johns

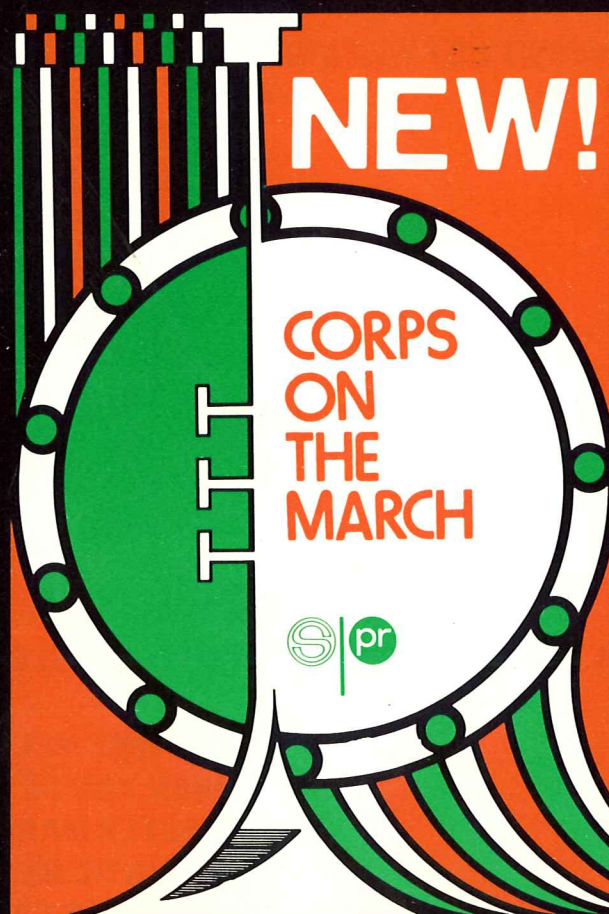
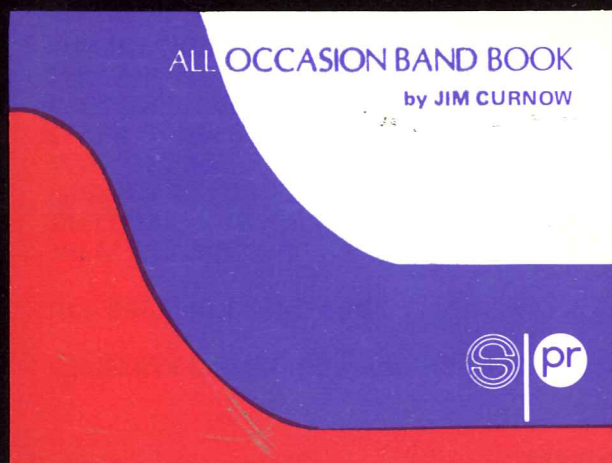
bill svarda

john tatgenhorst

tommy fry

carroll decamp

glen daum





HOT POPS

ALL NEW

FOR 1976/1977

COTTONFIELDS
 FIESTA FOR TRUMPETS
 GREENBRIARS OF WEXLEY (Released after recording)
 THE JEFFERSONS TV THEME
 MICHAEL ROW THE BOAT ASHORE

SIZZLER (Released after recording)
 THREE STEREOPHONIC FANFARES
 THUNDERING DRUMS
 WADE IN THE WATER
 WITH A LITTLE HELP FROM MY FRIENDS

THREE STEREOPHONIC FANFARES

1ST B♭ TRUMPET

by TOMMY J. FRY

Copyright © 1976 by STUDIO 224, 224 S. Lebanon St., Lebanon, Indiana 46052
 All Rights Reserved International Copyright Secured Printed in U.S.A.
 Sole Distributorship STUDIO P/R, INC.

THREE STEREOPHONIC FANFARES
 by Tommy Fry

Three glorious antiphonal fanfares which will create a triumphant entrance or exit for your band.

best uses

X	ENTRANCE
	DOWNFIELD
	DRILL ROUTINE
	DANCE ROUTINE
	TWIRLER FEATURE
	CONCERT FORMATION
X	EXIT
	PEP BAND
	PARADES

side 1 band 1

side 1 band 2

3

FIESTA FOR TRUMPETS

1ST B♭ TRUMPET

by JIM CURNOW

FIESTA FOR TRUMPETS
 by Jim Curnow

A fiery Latin original which you may use to feature a trumpet trio or the entire trumpet section.

best uses

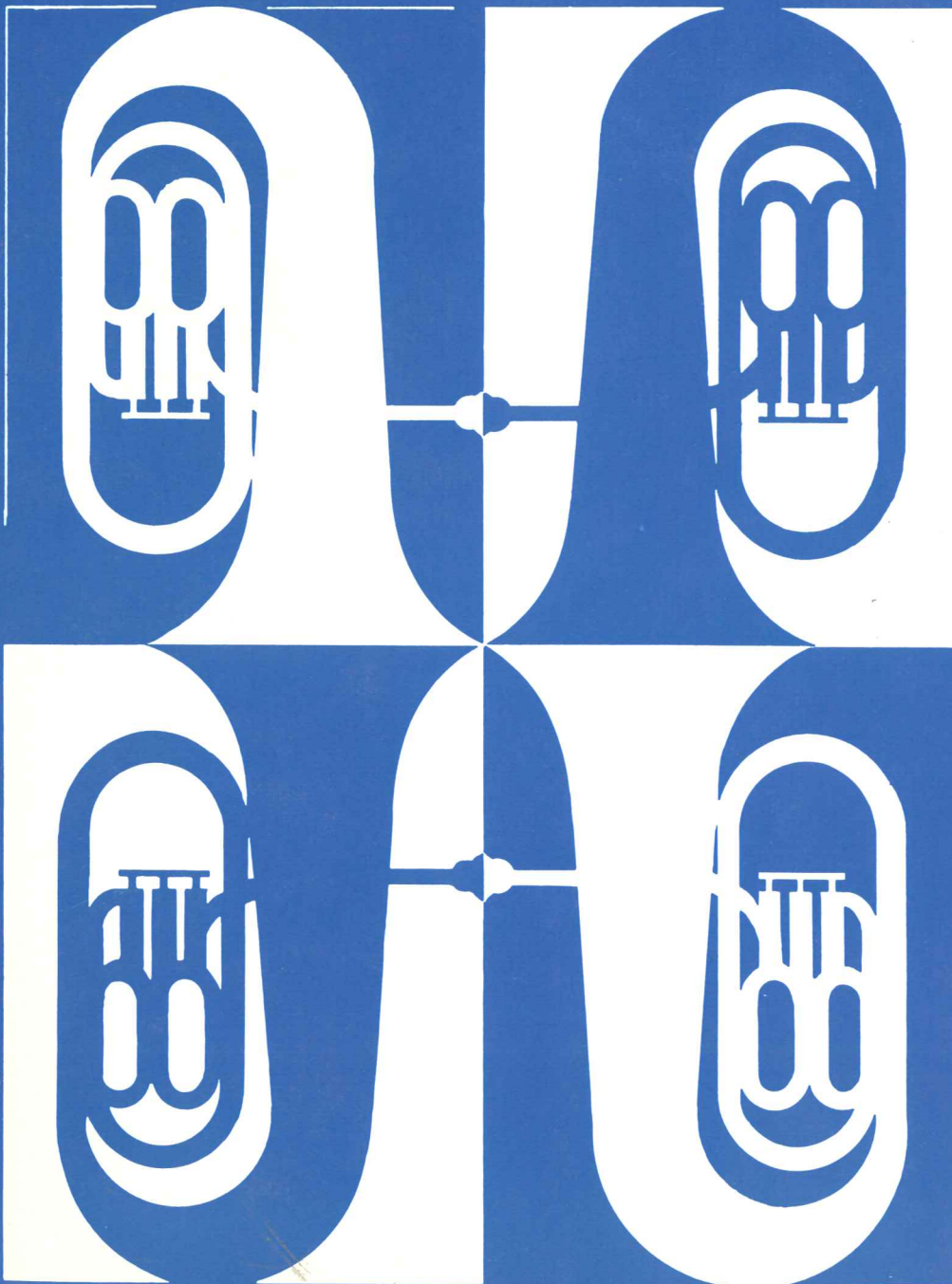
X	ENTRANCE
	DOWNFIELD
X	DRILL ROUTINE
	DANCE ROUTINE
	TWIRLER FEATURE
X	CONCERT FORMATION
X	EXIT
	PEP BAND
	PARADES

Copyright © 1976 by STUDIO 224, 224 S. Lebanon St., Lebanon, Indiana 46052
 All Rights Reserved International Copyright Secured Printed in U.S.A.
 Sole Distributorship STUDIO P/R, INC.



YOUNG BAND FAVORITES

FROM THE *Studio Series for Young Bands*



by
TOM JOHNS
LLOYD CONLEY
JOHN CARUSO
CARROLL DECAMP
R. CHRISTIAN DISHINGER
TOMMY FRY
WAYNE LIVINGSTON
NORMAN WARD

INSTRUMENTATION

Conductor
Flute
Oboe
1st Clarinet
2nd Clarinet
Bass Clarinet
Alto Saxophone
(Alto Cl.—E-flat Hn.)
Tenor Saxophone
(Baritone T.C.)
Baritone Saxophone
1st Trumpet
2nd Trumpet
F Horn
Trombone
(Bassoon)
Baritone B.C.
Tuba
Percussion

PRICE:

Parts	\$1.95
Score	5.95

the FIFTH from BEETHOVEN

2nd TRUMPET

arranged by TOM JOHNS

Disco Rock

ff f mf f cresc. decresc. p cresc. f to Coda p decresc. Repeat ad lib f D.S. al Coda CODA p f ff

2 3 (A) (B) (C) 6 (D) (E)

A TRIUMPHAL EXIT

TRUMPET 2

by TOMMY FRY

Very Stately

f f ff ff ff

(A) (B) (C) (D) (E) (F)

SCORE

THREE BAGATELLES

for String Orchestra

by

Tommy J. Fry

COMPLETE (8, 8, 5, 5, 5) \$40.00
SCORE 5.00
PARTS, ea. 2.50



SOUTHERN MUSIC COMPANY
SAN ANTONIO, TEXAS 78292

PROGRAM NOTES

Three Bagatelles for String Orchestra was commissioned by the Apollo Junior High School Orchestra and its conductor, Angie Jones, to be premiered at an honor concert to be performed at the Texas Music Educator's 1999 convention in San Antonio, Texas. The orchestra won the honor of presenting a concert at TMEA after having been chosen the Outstanding Junior High School String Orchestra for the State of Texas in 1998.

Bagatelles are typically short instrumental pieces, usually in ternary form. In the 19th century when the name was first used they were part of a larger body of works usually referred to as "character pieces" often using such titles as Impromptu, Moment Musical, Fantasia, etc.

Three Bagatelles is a collection of three short works with each piece exploring a somewhat different element. The common element for all three pieces is the use of the intervals based on G, C and D. From this element comes the themes, the devices, and on occasion, some on the harmonies used in all three of the pieces.

Three Bagatelles is dedicated to my best friend, kindest critic and wife for 25 years, Bobbye G. Fry.

PERFORMANCE NOTES

The "Giacoso" explores multiple meters, using 5/8, 6/8 and 3/8, and is based on the mixolydian mode. As the title implies it is piece with which to have fun. It moves rather quickly in tempo and has unexpected rhythmic turns making it rhythmically exciting for the young performer.

The "Chorale", though based on the inverted quartal intervals of the fourth, is completely tonal and it utilizes the aeolian mode. It opens with the theme harmonized in parallel major chords with the melody always appearing as the third of the chord. Essentially this makes each of the three lines appear as exactly the same melody with a different starting pitch. The theme is then altered rhythmically to become the basis for the next set of sequences with simple harmonic counterpoint in two or more voices.

The "Scherzo" closes the Bagatelles and as is typical of the Scherzo it is basically in 3/4 and moves very quickly. As in the "Giacoso" the melodic material is in the mixolydian mode but with a very different use of meter and it utilizes the theme in the form of an ostinato over which the theme occurs in its original form. Although the meter signature is 3/4, a great deal of 6/8 occurs in contrast to the 3/4. No meter changes occur, but are simulated by the use of beaming the eighth notes in groups of three, etc. In the closing section, beaming the eighth notes in groups of four contrasts 2/4 against 3/4. The final six bars of the movement has the lower voices playing a running scale line using F natural that creates the illusion that the G tonic of the Mixolydian Mode has become the dominant seventh chord in the key of C. The movement concludes with a flourish of diatonic scale runs using the G mixolydian scale preceding the final C.

My thanks to Ms. Angie Jones for her help with the bowing notation which makes the work more accessible for the young performer and to my friend and editor, Dr. R. Mark Rogers for his invaluable suggestions along the way.

TOMMY J. FRY

Tommy Fry is a graduate of McMurry University in Abilene, Texas where he studied composition with the renowned theory and composition teacher, Dr. Macon Sumerlin. After six years as a band director in the public schools, nineteen years as manager of a music company and music buyer for its chain of stores, Mr. Fry returned to McMurry University as the Director of Bands.

Mr. Fry was the Director of Bands at the University for ten years, leaving that position to become Associate Professor of Music responsible for the theory, composition and orchestration courses. He established the McMurry University Music Computer Lab and incorporated it into all undergraduate theory courses. Mr. Fry retired from teaching in May of 1997 but remains active in the music profession as a member of the publications department at Southern Music Company, San Antonio, Texas.

Since 1967, Mr. Fry has published a number of works for concert band, marching band, full orchestra and string orchestra. Many of his compositions have been included on prescribed music lists in over 30 states. He has been an active clinician/conductor with over 400 appearances with bands and orchestras ranging from junior high to collegiate levels. Additionally, he has made numerous appearances with All-Region, All-Area, and All State groups as the guest clinician/conductor.

Tommy Fry holds memberships with the Texas Bandmasters Association, Texas Music Educators Association, College Band Directors National Association and the American Society of Composers, Authors, and Publishers. He is a member of Phi Beta Mu, Phi Mu Alpha Sinfonia and Who's Who Among America's Teachers.

Commissioned by the Apollo Middle School Orchestra - Angie Jones, Conductor

THREE BAGATELLES

A FOR STRING ORCHESTRA

SO92

Tommy J. Fry

1. GIOCO SO

♩ = 72

Violins 1

Violins 2

Viola

Violoncello

Contrabass

ff

5

8

Vlns. 1

Vlns. 2

Vla.

Vcl.

Cb.

9 12

Vlins. 1 *mf*

Vlins. 2 *mf*
pizz.

Vla. *mf*

Vcl. *f*
mf
pizz.

Cb. *f*
mf
pizz.

13 16

Vlins. 1 *mf*

Vlins. 2 *mf*

Vla. *mf*

Vcl. *mf*

Cb. *mf*

17 20

Vlins. 1 *ff* *mf*

Vlins. 2 *ff* *f*

Vla. *arco* *ff* *f*

Vcl. *arco* *ff* *f* *pizz.*

Cb. *arco* *ff* *mf* *pizz.*

21 24

Vlins. 1 *ff* *f*

Vlins. 2 *ff* *mf*

Vla. *ff* *mf*

Vcl. *arco* *ff* *mf* *pizz.*

Cb. *arco* *ff* *mf* *pizz.*

25 27

Vlins. 1 *ff*

Vlins. 2 *ff*

Vla. *ff*

Vcl. *arco* *ff*

Cb. *arco* *ff*

29 31

Vlins. 1 *ff*

Vlins. 2 *ff*

Vla. *ff*

Vcl. *ff*

Cb. *ff*

33 **35**

1
Vlns. 2
Vla.
Vcl.
Cb.

f

37 **39**

1
Vlns. 2
Vla.
Vcl.
Cb.

mf
mf pizz.
mf
pizz.
mf
pizz.
mf

41 **43**

1
Vlns. 2
Vla.
Vcl.
Cb.

mf
mf
mf
mf
mf

45 **47**

1
Vlns. 2
Vla.
Vcl.
Cb.

ff
ff
ff
arco
arco
arco

48 **50**

1
Vlns. 2
Vla.
Vcl.
Cb.

sim.
sim.
sim.
ff
ff

2. CHORALE

Andante ♩=68

1
Vlns. 2
Vla.
Vcl.
Cb.

mp sempre legato
mp sempre legato
mp sempre legato



DUNCAN KLUSSMAN, Area Superintendent
Memorial Learning Community

"Thank you for selecting the Memorial High School Orchestra to perform at this year's convention. Their hard work and dedication to excellence is representative of the high standards we expect in the Memorial Learning Community of the Spring Branch Independent School District. It is indeed an honor and privilege to have them perform for you."



CRAIG M. WELLE, Director of Music Instruction
Spring Branch Independent School District

"The Spring Branch Independent School District is delighted that the Memorial High School Orchestra is participating in this year's convention. The Midwest Clinic has done and is doing much to encourage and support quality music education. We applaud your efforts to promote high standards for student achievement and professional growth among music directors."



VIRGINIA LEIKER, Principal
Memorial High School

"Under the leadership of Bingiee Shiu, the Memorial High School Orchestra has achieved national recognition because of his vision and expertise. The orchestra has also been ranked number one in Texas more than once. Last year, the first and second orchestras placed second and third in Texas, the only school to accomplish this feat. We salute Spring Branch for fostering such talent both in its students and its faculty."

MEMORIAL
HIGH
SCHOOL
OF HOUSTON, TEXAS

ORCHESTRA *Biography*

THE MEMORIAL ORCHESTRA

The Memorial Orchestra has a membership of more than one hundred students divided by audition into three distinct performing orchestras which meet daily for one hour; the Sinfonia and the Camerata, conducted by Bingiee Shiu, and the Philharmonia, conducted by Desirée Overree. In addition, selected members of the top orchestras and band combine to form the Memorial Symphony. Many of its string players have been named National Merit Scholars, HOBY Award winners and an orchestra member has been named valedictorian for the last six years.



Approximately 80% of the orchestra's students enhance their learning through private studies, which explains why performance opportunities are abundant at the high school level. A typical season will include five major concerts, plus holiday concerts at the Texas Medical Center, a chamber music concert and participation in solo and ensemble and region and state orchestra contests.

For more than a decade, the Memorial Orchestra has won consistent Sweepstakes ratings in UIL contest, in both string and full orchestra competition. They have been named the outstanding Orchestra at Corpus Christi's Buccaneer Festival as well as South Coast Music Festival. Each year, the orchestra places many of its members into the Texas All State Orchestras and is highly competitive in Texas Honor Orchestra Competition, being named Texas State Champions twice. This performance marks the orchestra's second appearance at The Midwest Clinic.

MEMORIAL *Biography* HIGH SCHOOL

MEMORIAL HIGH SCHOOL, HOUSTON, TEXAS

The Spring Branch Independent School District is known for its outstanding academic and college preparatory programs. The district's thirty-four schools are supported by the Vines Environmental Science Center and Arboretum, The Yeargin Art Museum, and The Instructional Television Center.

Memorial is the oldest of the four Spring Branch high schools. Annually, 92% of Memorial's 2000 students are accepted into state and private schools including many universities such as Harvard, Princeton, Yale, Stanford and Rice. Memorial's SAT scores are consistently among the highest in Texas public schools and of the 575 AP exams taken in May, 1999, 78% of the scores were a "3" or above. Sixty-four of the students taking the May exams were named scholars, one a State scholar, and four at the national level.

The US Department of Education named Memorial High School a National Exemplary School in 1989, the same year a Memorial teacher was named Texas Teacher of the Year. Based on its community/parent involvement, Redbook magazine named Memorial as one of the top 100 schools in the United States in 1996. Parents annually spend an average of 8,500 hours in service to the school.

Memorial offers a comprehensive program with over 200 course offerings, including all levels of performing arts, competitive athletics, and Advanced Placement in each discipline of the core curriculum.

Please visit us on the web at

http://168.69.65.229/mhsweb/academics/fine_arts/music/orchestra/index.htm
or email us at memorialorchestra@usa.net

MEMORIAL
HIGH
SCHOOL
OF HOUSTON, TEXAS

THE
MID
WEST
CLINIC
15
DECEMBER
1999



Orchestra



PROGRAM *Notes Notes*

THREE BAGATELLES BY TOMMY J. FRY

Giocoso
Chorale
Scherzo

Composers of the 19th Century began to weave Bagatelles, short instrumental pieces usually in ternary form, into larger bodies of work which were often character pieces. Some typical names for these movements were Impromptu, Moment Musical, Fantasia, etc. Three Bagatelles is a collection of three short works, each exploring a common element, the use of the intervals based on G, C and D. From this element come the themes, devices as well as some of the harmonies used in all three pieces. This piece was commissioned by the Apollo Junior High School Orchestra for its concert as Texas Honor Orchestra for the Texas Music Educators Association Convention in 1999.

SYMPHONIA DE NATIVITATE BY AN ANONYMOUS POLISH COMPOSER EDITED BY JOEL BLAHNIK

Desirée Overree, Conductor

Allegro
Andante
Allegro

The word 'symphony' derives from the Greek sym (together) and phóné (sounding) through the Latin word symphonia. From the Middle Ages through the Baroque era, the form was used in various ways, even as part of a church service. This piece is a pastorella, an instrumental pastorella without text, an important part of the musical culture in the time of Haydn and Mozart. Several of the themes from this piece originate from Christmas folk songs of Poland and the parallel minor modalities and the unbalanced phrases give this piece a uniquely Polish flavor.

REFLEXIONS BY CAROLD NUNEZ

Desirée Overree, Conductor

Reflexions was written for the Adkins String Ensemble, a group of six siblings who are all professional level string players. It is a piece grounded in the idiom of the jazz waltz, but has some interesting musical devices added in, such as interruptions of straight 3/4 meter, and the superimposition of the melody, written in "two". Originally, the work was written for two violins, two violas, two cellos and piano. In its present form, a bass part has been added. The piece was written in memoriam to Dr. George Morey, Professor Emeritus, University of North Texas.

MOZART MINUET AND RONDO BY WOLFGANG A. MOZART, ARRANGED BY JOHN O'REILLY

John Whitwell, Conductor

Many of W. A. Mozart's most outstanding contributions to music come in the form of opera. The Magic Flute, Marriage of Figaro and Cosi are among the staples of opera houses throughout the world. The minuet in this piece comes from the opera Don Giovanni, while the rondo is from a piece originally composed for winds and later arranged for piano by its composer. This piece makes a good introduction to the style of Mozart. While it has been simplified for younger orchestras, it retains the style of the original writing.

TO DANCE IN THE FIELDS OF GLORY BY ROBERT W. SMITH

Richard Crain, Conductor

This piece is a musical representation of the composer's visit to a war memorial, where on the same trip, he saw children playing in a nearby field. The work contains two contrasting styles, an introduction made up of a hymn-like progression, and a more joyful and energetic fast section. The notes on the publication jacket say "The contrasts of war and children playing in a peaceful world speak loudly as a tribute to those men and women who gave the ultimate sacrifice in times of strife." The piece provides an opportunity to introduce students to program music.

WINTER DANCES BY DAVID R. HOLSINGER

I.
II.

Winter Dances, a two movement work, was commissioned by the Texas Private Schools Music Education Association for the 1994 TPSMEA All-State String Orchestra. The first movement, a gentle waltz, emphasizes the mid viola and upper cello voice ranges.

The second movement is representative of the composer's style - a parody of dance in mixed meter - this one being based around 7/8. The music presents contrasting styles. While both movements feature modern harmonies, the first movement is fluid and legato and the second is vivacious and animated.

SUMMER CANVAS BY JEFFERSON TODD FRAZIER

Pasquales
Hymn to Sibelius
Fuge in the Old Style

Summer Canvas was commissioned by Bingiee Shiu on behalf of the Memorial Orchestra. The piece chronicles the composer's journey through New Mexico and Colorado. Pasquales is the name of a Santa Fe restaurant, full of color and life. The complex rhythms and meters of this movement reflect the energy of the surroundings of the restaurant. Hymn to Sibelius is an homage the composer wrote while stranded on the side of the road in Southern Colorado. The passionate music of this movement reflects his love for Sibelius' music. Fuge in the Old Style, a favorite form of Mr. Shiu, was written as Mr. Frazier arrived at his destination in Colorado.

PERSONNEL

VIOLIN

James Chen
Peter Dorn
Karen Goh
Krystle Goh
Kenzie Grubitz
Nakul Gupta
Kendall Hancock
Chris Justl
Paul Kang
Phyllis Kilgore
Tiffany Kwan
Jocelyn Lee
Shari Lim
Young Jee Moon
Joseph Padron
Jennifer Reynolds
Raman Shah
Stephanie Smith
Akiko Takeda
Elissa Thurmond
Andrew Tran
Stephen Wu
Justin Yu
Amir Ziafat

VIOLA

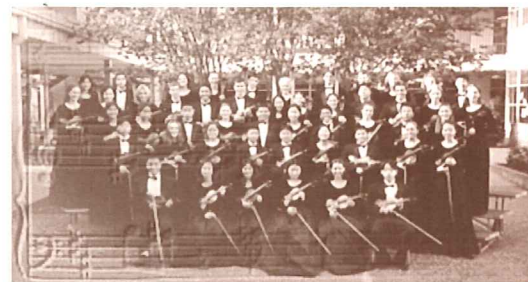
Laura Abrams
Will Grubitz
Mary Beth Hardin
Sarah Isgur
Yeong Lim
Lindsey Martin
Nancy Mitchell
Justin Shin
K. K. Yu

CELLO

Meghan Cowley
Emily Gerson
Madeline Hwang
Matthew Lim
Kelly Perry
Neal Richards
Nick Skizim
Christina Wai
Rachel Winczewski

BASS

Hardy Eastham
Larkin Elliott
Alex Kovalevich
Nick Kovalevich



MEMORIAL
HIGH SCHOOL
ORCHESTRA
OF HOUSTON, TEXAS

ORCHESTRA *Conductors*



BINGIEE SHIU Bingiee Shiu, alongside his best friend and wife Cara, are working to create a loving home for their sons Daniel and Nicholas. Mr. Shiu is conductor of the Memorial Orchestras and is also the conductor-in-residence of the American Festival for the Arts Summer Conservatory Orchestra. He has earned the degrees of Bachelor of Music Education from Abilene Christian University and Master of Music in Conducting from Sam Houston State University. Mr. Shiu has served on various state committees, such as the Honor Orchestra Panel, the All-State Charing Panel and the University Interscholastic League Orchestra Sightreading Selection Committee.

He has also been active as a guest conductor, clinician and adjudicator for orchestras throughout Texas. Mr. Shiu's honors include Who's Who in American Colleges and Universities, Who's Who Among American Teachers, Outstanding Young Men in America, and the Cypress-Fairbanks Spotlight Award for excellence in teaching. Recently, he was honored as a recipient of the prestigious University Interscholastic League Denius Award and Memorial High School's Teacher of the Year. His orchestras consistently win Sweepstakes Awards and rank in the top three in Honor Orchestra competition, winning the Texas state championship in 1997. Several of his arrangements have been published by Southern Music Company.



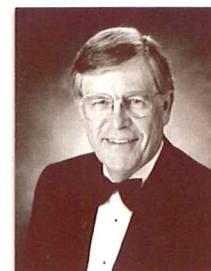
DESIRÉE OVERREE Like the students she teaches, Desirée Overree began string instruction in the public schools of Texas. She performed with All-Region Orchestras, the Metrocrest Youth Orchestra, and the SMU Conservatory as a student in junior high and high school. Miss Overree has studied violin with James Gardner, Barbara Rask, and Joy Plesner, and has studied conducting with Gary Sousa, Carol Smith, and Kent Hatteberg. She completed her student teaching in Klein ISD under Keith Markuson and Norren Adams, and graduated with a BMed with Highest Honors, from Sam Houston State University. Miss Overree has performed as a member of the Woodlands Symphony, the Kingwood Pops and has served as Assistant Conductor of the Conroe Symphony. She

has traveled extensively throughout Europe with the SMU Conservatory Chamber Orchestra and has taught for the SHSU Summer Camp programs, the Greater Houston Youth Orchestras and for various orchestra programs throughout Texas. Previously, she was the Director of Orchestras at Humble MS in Humble ISD. Currently, she assists Bingiee Shiu at Memorial HS and Michael Alexander at Stratford High School. Under her baton, the MHS Philharmonia Orchestra garnered the First Runner-Up Award in the Texas Honor Orchestra Competition.



JOHN L. WHITWELL John Whitwell is Director of Bands, Professor of Music and Chair of the Conducting Area at Michigan State University, where he conducts the Wind Symphony and guides the graduate degree programs in Wind Conducting. Previously, Professor Whitwell held positions at Stephen F. Austin State University, Abilene Christian University and in the Michigan public schools, Ann Arbor Huron and Northwest Jackson High Schools. His bands have performed for the College Band Directors National Association Convention, Texas Music Educators Association Convention, the Midwest Clinic and Midwestern Conference on Vocal and Instrumental Music. He is past-president of the Big Ten

Band Directors Association and the North Central Division of the College Band Directors National Association, and is a member of the board of the Midwest Clinic. Professor Whitwell maintains an active schedule as a guest conductor and clinician throughout the United States.



RICHARD CRAIN Richard Crain is in his 21st year as Director of Music for the Spring Independent School District, which has received national recognition for its exemplary music programs. Mr. Crain served as band director at Spring and Westfield High Schools, both in Spring ISD. Crain's bands have performed in the Tournament of Roses Parade and have won honors at festivals in several states and have twice presented concerts at the Midwest Clinic. He is active as a consultant, adjudicator and clinician in the United States and Canada. He is the Executive Secretary for Music Activities in Texas' University Interscholastic League Region IX. Mr. Crain has held offices in

many recognized organizations, including the Midwest Clinic, Texas Music Educators Association and Texas Bandmasters Association, which honored him as the 1994 Texas Bandmaster of the Year. The National Federation of Interscholastic Music Associations also named him Outstanding Music Educator in 1995.

Apollo Junior High Honors Orchestra Directors



Angie Jones received her Bachelor of Music Education, magna cum laude, from Southwest Texas State University in San Marcos, Texas in 1979. Currently in her tenth year with RISD, her orchestras have been consistent contest and festival winners, and her top orchestras have placed regularly in the TMEA Honor Orchestra competition.

Although this marks Ms. Jones' seventh year at Apollo Junior High School, she also taught orchestra for three years at Richardson High School. Prior to her positions in RISD, she taught orchestra and band students in Odessa, the Austin area, Abilene, and Amarillo. While in Amarillo, she also served for three years as the Executive Director of the "Greater Southwest Music Festival."

Her primary instruments are trombone, 'cello and piano. Ms. Jones has performed with various symphony orchestras and chamber groups in Texas and is a member of Texas Music Educators Association, Texas Orchestra Directors Association and Mu Omicron. In addition to her position at Apollo, Ms. Jones teaches 'cello and low brass students in her home studio. She has three children: Brad, 15; Mallory, 11; and

Kelsey, 10. Her hobbies include crafting, camping and cooking.

Jody Cies graduated from the University of Dubuque in Iowa, with a Bachelor of Music degree. Currently in her twelfth year of teaching, this is Mrs. Cies' first year as Assistant Orchestra Director at Apollo Junior High. She has taught in Dallas at Lakewood and Nathaniel Hawthorne Elementary Schools, in Garland at Webb and Jackson Middle Schools, and in Richardson at Richardson West Junior High. Her groups have consistently earned outstanding ratings at contests and competitions.

Mrs. Cies is a violinist with the Richardson Symphony Orchestra and has performed in other civic ensembles as well. Her professional affiliations include TMEA and TODA. Also, Mrs. Cies has served as Region III Junior High School Co-Chairman. She and her husband, Tom, have two children: Andrew, 14; and Rachel, 12. She enjoys baking, collecting family recipes and reading.



Guest Conductor



Ruth Kurtis is in her nineteenth year of teaching orchestra in RISD and taught previously in Michigan. She currently directs the Berkner High School Orchestras and serves as a coordinator for the Berkner Area String Cluster, comprised of three feeder junior highs and twelve elementary school campuses. She received her Bachelor of Music degree from Western Michigan University and received her Master of Music Education degree from the University of North Texas.

Under Mrs. Kurtis' direction, the Berkner Orchestras have established a long tradition of excellence, which includes receiving awards like their selection as the TMEA String Honor Orchestra and numerous state and national festival performance awards.

Mrs. Kurtis has served in many leadership capacities such as: TMEA Region Chairman, UIL Sight-Reading Committee, Texas Adjudicators Association Committee on Standards of Performance, President of the Texas Orchestra Directors Association, is the current President of TexASTA with NSOA, and a charter member of Mu Omicron, a musical fraternity of orchestra directors. She is an active clinician and adjudicator in Oklahoma, Nevada and throughout Texas, and enjoys playing violin and

viola in various professional groups in the Dallas area.

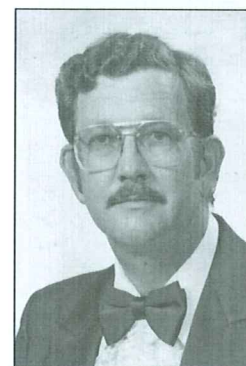
In 1996, she was honored as one of the RISD Teachers of the Year for her creativity and innovation used in the classroom, and she is listed in *Who's Who of America's Teachers*. Mrs. Kurtis has co-authored a handbook published by TexASTA for new orchestra directors and enjoys collaborating with other colleagues as they make new arrangements for string orchestra and harp. When not active in the field of music, you might find Mrs Kurtis busy hiking, gardening, traveling or indulging in her newest hobby, creating stained glass.

Soloist



Cindy Horstman, North Star recording artist, has a unique, jazzy style that brings a fresh new sound to one of the oldest instruments known and loved by all, the harp. A native of Austin, Texas, Ms. Horstman has earned many accolades including: Master of Music-Harp Performance, University of Texas; Prize Winner, Lyon Healy International Jazz Harp Festival; 1995 Texas Tornado of Strings Award, Buddy Magazine (The Original Texas Music Magazine); 1996, 1997 & 1998 Award Recipient, ASCAP Popular Music Award; and 1997-2001 Touring Artist, Texas Commission on the Arts. Ms. Horstman is an artist who has reached out to all age groups with her music. She and her ensemble have toured across the Southwest and have received rave reviews from old and young alike, and her recorded music is getting extensive airplay on radio stations across the country.

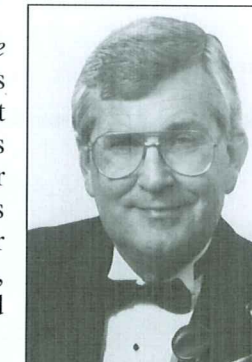
Composers and Arrangers



Tommy Fry is a graduate of McMurry University in Abilene, Texas, where he studied with the legendary pioneer of the Texas public school band movement, Dr. Raymond T. Bynum, and renowned theory and composition teacher, Dr. Macon Sumerlin. After six years as a band director in the Texas public schools, nineteen years as manager of a music company and music buyer for its chain of stores, Mr. Fry returned to McMurry University as the Director of Bands at the request of Dr. Sumerlin, who was at that time chairman of the Fine Arts Division of the University. Mr. Fry was the Director of Bands at the University for ten years when he left that position to become Associate Professor of Music responsible for the theory and orchestration courses. He established the McMurry University Computer Lab and incorporated it into all undergraduate theory courses as well as teaching independent computer courses in music notation and related areas. Mr. Fry retired from teaching in May, 1997, but remains active in the music profession as a member of the publications department at Southern Music Company, San Antonio, Texas.

Since 1967, Mr. Fry has published a number of works for concert band, marching band, full orchestra, and string orchestra. Many of his compositions have been included on prescribed music lists in over 30 states. He has been an active clinician/conductor with over 400 appearances with bands and orchestras ranging from junior high to collegiate levels. Additionally, he has made numerous appearances with All-Region, All-Area, and All-State groups as the guest clinician/conductor. Mr. Fry holds memberships with the Texas Bandmasters Association, TMEA, Texas Association of Music Adjudicators, College Band Directors National Association, and the American Society of Composers, Authors and Publishers. He is a member of Phi Beta Mu, Phi Mu Alpha Sinfonia, and *Who's Who Among American Teachers*.

Jim Higgins, the arranger of the string parts for the *Suk Serenade*, *Fair Evening* and *My Favorite Things*, has been active in all phases of musical activity in Richardson since 1986. Mr. Higgins was a cellist in the Florida Symphony Orchestra in Orlando before coming to Texas. He first taught in the Richardson ISD, then became an independent performer, teacher, and writer. He has performed with the Richardson Symphony, the Dallas Opera Orchestra, the Dallas Chamber Orchestra, and the OPUS III piano trio. His teaching studio has cellists from the greater Dallas area, including many in the Apollo orchestra program. Each summer, he works with the Greater Dallas Youth Orchestra as conductor and teacher. In addition to writing arrangements for school, churches and commercial ensembles, Mr. Higgins has had music published by Kjos, Kendor and Wynn/Music.



Apollo Junior High Choral Director



Janey Hall is in her fourth year at Apollo Junior High. In this time, the membership has doubled and her choirs consistently receive Sweepstakes ratings at UIL contests. A composer as well, Ms. Hall's last two compositions have premiered in the Morton H. Meyerson Symphony Center in Dallas. "Erin's Song" will soon be released on CD by The Women's Chorus of Dallas.

Ms. Hall received the Bachelors of Music Education degree with concentrations in choral conducting and voice from Abilene Christian University. She has been named to *Who's Who in America's Colleges and Universities*, *Outstanding Young Women of America*, *Who's Who of America's Young Professional Women*, and *Who's Who of America's Teachers*. Ms. Hall is professionally affiliated with TMEA, TCDA, PTA and REA.

Music Faculty

Gene Williams joined the McMurry University faculty as director of bands and assistant professor of music in July 1995. His teaching duties include directing the Wind Ensemble, Marching Band, Jazz Ensemble, teaching all applied brass lessons and brass methods classes. Previously, Mr. Williams served as director of bands at Krueger Middle School in San Antonio, Texas; band teaching assistant at Texas Tech University in Lubbock, Texas; director of bands at Crockett Middle School in Amarillo, Texas; and assistant director of bands and orchestra at Amarillo High School in Amarillo, Texas. Mr. Williams earned his Bachelor of Music Education and Master of Music degrees from Texas Tech University where he served as drum major in 1988. Mr. Williams has one work published by RBC Music Company and has three contracted works in progress to be published by Southern Music Company. Mr. Williams is a member of the College Bandmasters and Directors National Association, Texas Music Educators Association, Texas Bandmasters Association and Kappa Kappa Psi Honorary Band Fraternity.

Tommy J. Fry is currently associate professor of music, teaching courses in theory, ear training and conducting, after having served 11 years as director of bands at McMurry. He has been a guest conductor and clinician with over 400 appearances. Mr. Fry has conducted premier performances of his works at the Music Educators National Conference, Oklahoma Music Educators Conference and Texas Bandmasters Clinic/Convention.

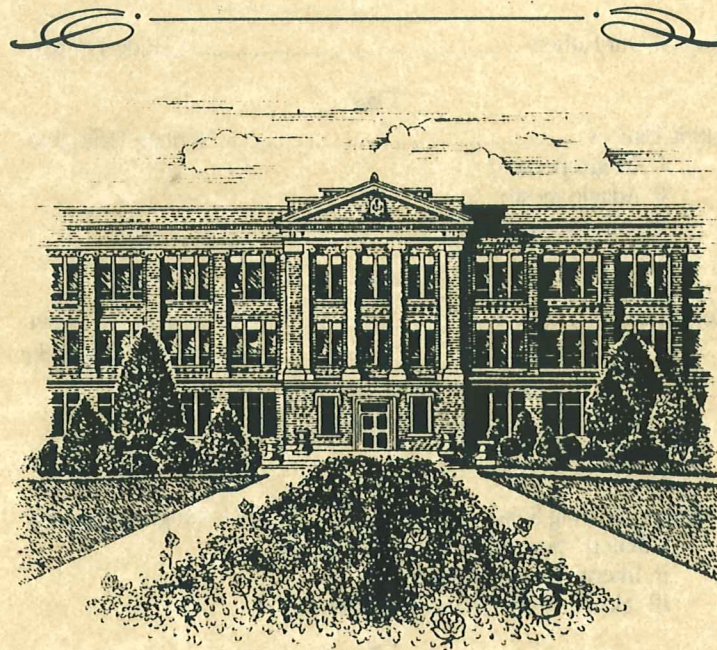
As a composer Mr. Fry has had 15 works published by Carl Fisher Inc., and Columbia Pictures/Belwin Corp. His works, ranging from music for marching band to symphony orchestra, have appeared on contest lists in 30 states and have been performed by numerous all-state bands and orchestras. His fanfares for the marching band were for many years the "traditional" opening for shows by Texas Tech University and the University of Arkansas, receiving performances at nationally televised post-season bowl games.

Dr. David Shea, assistant professor of music, joined the McMurry University faculty in 1996 as teacher of applied woodwinds. Dr. Shea holds a Doctor of Music Degree in Clarinet Performance from Indiana University, a Master of Music degree in Clarinet Performance from the University of Illinois, a Bachelor of Music in Clarinet Performance from the Oberlin Conservatory, and a Bachelor of Arts in Mathematics from Oberlin College. Before coming to McMurry, Mr. Shea was a finalist in the Boosey and Hawkes North American Clarinet Competition. His orchestral experience includes positions with the Indianapolis Symphony, Fort Wayne Symphony, Columbus Philharmonic, Champaign-Urbana Symphony and the Sinfonia de Camera. Mr. Shea has also been involved in recording projects with Crystal, Naxos, Delos, Opus One, Indiana University Recordings and Hal Leonard Productions.

James A. Rennier serves as assistant professor of music. His teaching duties include applied percussion, percussion ensemble and music literature and history courses. Mr. Rennier received his Bachelor of Music degree in Percussion Performance from Indiana University where he also was awarded the Performer's Certificate. His Master of Music in Percussion Performance is from the University of Texas. He is currently pursuing a Ph.D. in Fine Arts from Texas Tech University.

Prior to coming to McMurry University, Mr. Rennier was principal percussionist and assistant timpanist of the Austin Symphony Orchestra for eight years. His extensive performance background includes the Austin Lyric Opera, San Antonio Symphony, San Antonio Festival, Houston Opera, San Angelo Symphony, Midland-Odessa Symphony and he has recording credits with Walt Disney Productions and others.

Mr. Rennier has appeared as a soloist with the Midland-Odessa Symphony, Austin Symphony Orchestra, McMurry University Wind Ensemble and was the winner of the 1983 University of Texas Concerto Competition.



The McMurry University

Concert Band

Gene Williams,
Conductor

Concert Tour 1997



Abilene, Texas

Program

God Of Our Fathers Claude T. Smith



Satiric Dances Norman Dello Joio

- I. Allegro pesante
- II. Adagio mesto
- III. Allegro spumante



Concertino Carl Maria Von Weber
arranged by M. L. Lake

featuring Dr. David Shea, soloist

Conducted by Tommy Fry



English Folk Song Suite Ralph Vaughan Williams

- I. March "Seventeen Come Sunday"
- II. Intermezzo "My Bonny Boy"
- III. March "Folk Songs From Somerset"



Hopak Raskolniki David R. Holsinger

1997 Tour Schedule

Snyder (Texas) High School
February 26, 1 p.m.

St. John's United Methodist Church, Lubbock, Texas
February 26, 6:30 p.m.

Lovington (N.M.) High School
February 27, 9 a.m.

First United Methodist Church, Roswell, N.M.
February 27, 7 p.m.

Goddard (Roswell, N.M.) High School
February 28, 8:30 a.m.

First United Methodist Church, Artesia, N.M.
February 28, 7 p.m.

McMurry University

Philosophy and Purposes

McMurry University, a four-year liberal-arts institution, was chartered in 1921 in the name of McMurry College as the result of a desire of Methodists in West Texas and New Mexico to serve the area with an institution of higher learning that combines the Wesleyan traditions of intellectual achievement and "vital piety." Named for a prominent bishop, it opened in 1923 on the 41-acre site that it now occupies. McMurry University welcomes any student who meets the academic requirements, and it makes no other discrimination on the basis of religion or national origin. While it has historically drawn students from the Northwest Texas and New Mexico Conferences of the United Methodist Church and still sees these as its primary service area, it welcomes students from all over the state, nation and the world. McMurry University is committed to general education, which functions as the basis for its pre-professional and professional programs. It strives to participate in the traditions of liberal-arts education, with a corollary set of responsibilities to the community, the church, the academic world, but foremost to its students.

The McMurry University Band

From 1946 to 1968, the McMurry University Band was under the dynamic direction of Dr. Raymond Bynum, a true pioneer and legend in the development of the American School Band Movement as we know it today.

Dr. Bynum, now McMurry's Director Emeritus, established a three-fold purpose for the McMurry Band:

- 1) to support musical needs and stimulate musical growth among college students.
- 2) to provide expert training and preparation for aspiring music teachers and performers.
- 3) to provide a channel to the non-music-major student who enjoys the art as an avocation.

The McMurry Band, under the direction of Gene Williams, remains committed to these ideals today.

The band has an annual enrollment of approximately 65 performers in the marching band and 55 in the concert band. The band performs at all home football games. During the spring semester, this group becomes the concert band and performs a full program of concerts in Abilene, as well as a four-day concert tour which takes them across Texas, New Mexico, and on occasion, other states as well.

The Jazz Ensemble is made up of selected performers from the concert band. This group also performs regularly in the Abilene area and takes a concert tour each spring.

In addition to these two major ensembles, opportunities exist for students to perform as members of brass, woodwind, percussion and mixed ensembles.

The members of the band come from all academic areas of the University. Only 25 percent of the group are music majors. The balance of the group consists of students majoring in such diverse areas as biology, elementary education, marketing, chemistry, pre-law, psychology, business, etc.

Scholarships for the band are open to all performers regardless of their major. Auditions may be arranged by contacting Gene Williams, Director of Bands, McM Station Box 575, Abilene, Texas 79697 or calling 1-800-477-0077, extension 2286.

Bi-State Band Camp

Each summer, McMurry University hosts this outstanding group of Texas and New Mexico high school musicians on the McMurry campus. Students are furnished specialists to rehearse the group in preparation for a concert by the Bi-State Band on the McMurry University campus. If you are currently enrolled in grades 9-12, and would like to know more about this group, you may write to: Director of Bands, McMurry Station Box 575, Abilene, TX 79697 or call 1-800-477-0077, extension 2286.

McMurry University

Abilene, Texas



Presents

**The McMurry University
Concert Band and Jazz Ensemble**

Mr. John Laverty

Conductor

Annual Spring Concert

April 27, 1991

3:00 p.m.

Radford Auditorium

PROGRAM

THE LIBERTY BELLJohn Phillips Sousa

A TRIBUTE TO TOMMY J. FRY

BLASENFESTTommy J. Fry

FREISCHUTZ QUICKSTEPTommy J. Fry

TRIPTYCH.....Tommy J. Fry

HOMAGE TO PEROTINRon Nelson

JAZZ ENSEMBLE

DING DONG DINGBob Brookmeyer

THIS BASS WAS MADE FOR WALKIN'Thad Jones

TANGERINEMercer/Schertzing
Arranged by Wolpe

ALL OF MEMarks/Simon
Arranged by Byers

ROADRUNNERKeith Foley

CONCERT BAND

AMERICAArranged by Dragon

McMURRY ALMA MATERArranged by Sumerlin

THE MOORE LION BAND

PROUDLY PRESENTS A SPRING CONCERT

The Lion Band wishes to acknowledge the following persons and firms for continuous support throughout this year:

The Moore Band Booster Organization
The Moore Public Schools Administration and School Board
The Faculty and Staff of Moore High School
Mr. Hayes
Mr. Arvin
Mr. Savage
Mr. David
Mr. Nash
And, for assistance in financing this clinci,
The Larsen Music Company
The Norman Music Center
The Sharp & Nichols Music Company

And, most importantly, you, the patrons and parents who have been especially kind to us this year.



**Featuring: Guest Conductor,
Mr. Tommy J. Fry**

**With: The Concert Band
The Symphonic Winds**

May 17, 1975

8 P.M.

CENTRAL JUNIOR HIGH AUDITORIUM

DIRECTORS:

Ed White
Ron Osborn
Allen Correll

Program

THE CONCERT BAND RON OSBORN, Director

NEW SOUNDS OF HERB ALPERT AND THE TJB. Arr. Robert Lowden

SELECTIONS FROM BEST OF BREAD Arr. Jack Marek
(Allen Correll, Conductor)

THE CARPENTERS Arr. Willis Schaefer

TRIPTYCH. Tommy J. Fry
(Conducted by Mr. Fry)

QUEEN CORONATION

THE SYMPHONIC WINDS ED WHITE, Director

OVERTURE IN "POP" STYLE Bill Holcombe
(Charles Rice, Conductor)

FANTASIA FOR EUPHONIUM AND BAND. Gordon Jacob
(Bruce Campbell, Euphonium soloist)

RAGGED ROZEY. Karl King

SONATA FOR TRUMPET. Paul Hindemith
(Allen Correll, Conductor)

BLASENFEST. Tommy J. Fry
(Conducted by Mr. Fry)

FREISCHUTZ QUICKSTEP Claudio Grafulla
(Conducted by Mr. Fry) Arr. by Tommy J. Fry

THE MOORE "LION" BAND 1974-75 ACCOMPLISHMENTS:

Second Place -- State Fair Parade (Lost by four-tenths of a point)

1st Division -- Regional Marching Contest

2nd Division -- State Marching Contest --

1st Division -- Central State Band Festival -- Symphonic Winds

2nd Division -- Central State Band Festival -- Concert Band

1st Division -- District Band Contest -- Symphonic Winds

2nd Division -- District Band Contest -- Concert Bands

2nd Division -- State Band Contest -- Symphonic Winds

(highest rating ever received by Moore Band at State)

1st Division -- State Sight-Reading

2nd Division -- Greater Southwest Festival -- Symphonic Winds

3rd Division -- Greater Southwest Festival -- Concert Bands

A TOTAL of 251 medals were won by students from high school band participating in 3 Solo and Ensemble Contests. Some students won as many as 12 medals this year. We had the largest number of 1st divisions of any school at the state contest with 24 entries receiving superior ratings.

BAND OFFICERS:

PRESIDENT -- Bruce Campbell

VICE PRESIDENT -- Mark Kallio

SECRETARY -- Becky Lynch

SENIOR REPRESENTATIVE -- Cheryl Heitz

JUNIOR REPRESENTATIVE -- Becky Chamblee

SOPHOMORE REPRESENTATIVES -- Bruce Myers and Ray Wheeler

DRUM MAJORS -- Doug Bourassa and Robert Stone

HISTORIAN -- Karen Factor

CONCERT BAND REPRESENTATIVE -- Lance Perkins

QUARTERMASTER -- Bob Hoipkemier

CHIEF LIBRARIAN -- Markel Gaston

BAND STUDENTS OF THE MONTH:

September -- Terri Graham

October -- Bruce Campbell

November -- Aimee Sisco

December -- Markel Gaston

January -- Paula Keene

February -- Paul Onspaugh

March -- Mark Holder

April -- Dan Warren

May -- Mark Kallio

Jimmy Fendrych



2/1/75

Oklahoma Music Educators Association

January 30, 31, February 1, 1975

SATURDAY AFTERNOON, February 1, (Continued)

2:00 **VOCAL** (Continental Room, 14th floor)

Presiding: Charles Klingman, Vice-President, OMEA

Stephen Paulus, Minnesota Composers' Forum

WEATHERFORD HIGH SCHOOL MIXED CHORUS

Stephen Scott, Conductor

Alleluia John Zaumeyer

Four Pastorales Cecil Effinger

1. No Mark

2. Noon

3. Basket

4. Wood

Jackie Raleigh, oboe

Madrigals Three Emma Lou Diemer

2. Daybreak

3. It Was a Lover and His Lass

She Walks in Beauty David Foltz

Elijah Rock arr. Jester Hairston

Es Steht ein Lind' Frank Ahrold

Amazing Grace arr. John Coates, Jr.

3:30 **Concert Hour** (Ballrooms D, E, & F)

PONCA CITY HIGH ORCHESTRA

Bill Anderson, Conductor

Capriccio Italien Tchaikowsky

Movement Presto from Symphony in D Boccherini
Chamber Orchestra

Triptych for Orchestra Fry

Tommy Fry, Guest Conductor

(Premier Performance, Commissioned for 1975 Convention)

Overture from Musical 'Hair' arr. Gerry Long

McALESTER MUSIC DEPARTMENT

Jerry Hull, Conductor

3:30 **McALESTER HIGH SCHOOL MUSIC DEPARTMENT**

Jerry Hull, Conductor

Laforza del Destino Verdi

Pace, Pace mio dio (from Laforza) Verdi

Kaye Edwards Duran, soloist

Adagio & Allegro Corelli

Guest Conductor: J. F. Muller

Scored by: J. F. Muller

Old Hundredth Psalm Tune Williams

Lincolnshire Posey Grainger

Guest Conductor: Gene Witherspoon

Chorale and Alleluia Hanson

Porter's Catalina Band March McCaughey

4:30 **ASBDA** (Executive Suite, Skirvin)

Business Meeting

SATURDAY EVENING, February 1

Presiding: Ed Keller, Coordinator of Music,
Oklahoma City Public Schools

7:30 **All-State Honor Festival Concert**

(Civic Center Music Hall)

Presiding:

ALL-OMEA HONOR CHORUS

John Robinson, Chairman

Ralph Woodward, Director

Jubilate Deo Giovanni Gabrielli

Hava Neytzey B'Machol Goldman

Chanticleer Dirksen

Salvator Mundi Blow

The Morning Star Paul Sjolund

I Hear A Harp (Girls Chorus) Brahms

Goodfellows Be Mellow (Boys Chorus) Bach arr. Duey

ALL-STATE HONOR ORCHESTRA

R. H. Long, Chairman

George C. Wilson, Conductor

Concerto Grosso Vivaldi-Fiannini

Intermezzo (from Hary Janos) Zolton Kodaly

Symphony #5 (Finale) Shostakovich

ALL-STATE HONOR BAND

George Brite, Chairman

Gene Witherspoon, Conductor

7:30 **All-OMEA HONOR BAND**

George C. Brite, Chairman

Gene Witherspoon, Director

Circus Overture William Schuman — Arr. Don Owen

Children's March Percy Aldridge Grainger

Arr. Frank Erickson

Gallop Dimitri Shostakovich

God of Our Fathers ... Chorale Prelude by Claude T. Smith

Symphony in B Flat — 1st Movement Paul Hindemith

PONCA CITY HIGH SCHOOL

ROBERT E. FORD, PRINCIPAL

Presents the

SYMPHONY ORCHESTRA

Bill Anderson, Conductor

IN CONCERT

January 28, 1975

February 1, 1975

8:00 P.M.

3:30 P.M.

Howell Auditorium

Ballrooms D, E, F

Ponca City High School

Skirvin Plaza Hotel

PROGRAM

JEFF JOHNSON, Announcer

CAPRICCIO ITALIEN.....Peter Tschaikowsky

Tschaikowsky (1804-1893) wrote the Fantasia on Folk Songs, the "Capriccio Italien" while sojourning in Italy. All of the melodies incorporated in this work were either taken in part from collections, or were heard by the composer in the streets of Italy. His place of residence was across the street from the Army Barracks, and the haunting Bugle Calls of the troops can be heard throughout this composition.

Tschaikowsky is universally acknowledged as one of the Great Masters of the Romantic Period and this composition presents a brilliant study in contrast, both of the moods of the composer and of Italy.

SYMPHONY in D.....Luigi Boccherini
(Performed by the CHAMBER ORCHESTRA)

This work was found in the Watson Music Library, Manchester England by Newell Jenkins. The set of parts used for this edition are dated 1780, although the symphony was probably composed at an earlier date. This symphony, dedicated to His Serene Highness Don Louis, Infante of Spain (the brother of King Carlos III and patron of Boccherini), is replete with Concertante elements. The texture is transparent and shows Boccherini to be a representative of the roccoco style. This is Boccherini's more felicitous symphonies and deserves more recognition than has been given to it.

THE CHAMBER ORCHESTRA is made up of Students from the Ponca City Instrumental Music Program that are Members or alternate Members to the OMEA All-State Band and Orchestra. This organization rehearses weekly and has a performance schedule of its own throughout the year.

TRIPTYCH FOR ORCHESTRA.....Tommy J. Fry
(PREMIERE PERFORMANCE - COMPOSER CONDUCTING)

TRIPTYCH FOR ORCHESTRA was commissioned by the members of the Ponca City High School Symphony Orchestra in August of 1974. Mr. Fry originally scored this work for winds and percussion and has rescored it for Symphony Orchestra quite effectively. This composition utilizes each section of the orchestra to its fullest and makes a much-needed contribution to the repertoire of the school orchestra.

SELECTIONS FROM HAIR.....Rado - Ragni - MacDermot

The musical HAIR has been greeted with every possible reaction. It utilizes many extremely contemporary stage techniques that offend many audiences, while the sound track has been awarded a GRAMMY Award by the music industry. Containing such selections as AQUARIUS, EASY TO BE HARD, GOOD MORNING STARSHINE, HAIR, AND LET THE SUNSHINE IN, this arrangement for Symphonic Orchestra has been done by R. Gerry Long.

Ponca City High School Symphony Orchestra

1974-1975 Personnel

Bill Anderson, Conductor

FIRST VIOLINS

Becky Backus *
Darla Berggren
Bernie DeWitt *
Dianne Ivie *
Jill Kestler * - Principal
Karen Minor *
Ruth Reed (*)
Cheryl Rodriquez *
Phyllis Rush
Lee Sparlin
Christy Thompson *
Judy Warren *

SECOND VIOLINS

Shelly Abercrombie
Kenneth Altman
Sally Becker
Amy Engle
Joe Hunt
Tammy Isnard
Karen Peters
Gail Pickens
Linda Poe
Carrie Poulter
Kathy Ronan
Steve Sullivan
David Taber
Kent Thele * - Principal
Teri Thomas
Debbi Troxell

VIOLAS

Kathy Backus * - Principal
Penny Bateman
Kate Begley
Janet Boyer (*)
Mark Hoyle
Chris Leyda
Peggy Sherman
Dean Sparlin * NHS
Laura Starks *

VIOLINCELLOS

Judi Boyer
Marjorie Key
Pat O'Mealey * - Principal
Jenny Rush
Joan Sorenson *
Deena Walters (*)

STRING BASSES

Corky Bishop
Jim Denton *
Paul Gray
Karl Inskeep * - Principal

PICCOLO

Janice Bolene (*) NHS

FLUTES

Janice Bolene (*) NHS - Principal
Linda Hohenberger
Patti Riechers
Karen Thomas

OBOE

Darlene Snyder

CLARINETS

Dee Barnes
Penny Davis
Joanie Guinn
Chris Shock * - Principal

BASS CLARINET

Pat Begley

BASSOON

Mike Seals

ALTO SAXOPHONE

Greg Leslie NHS

TENOR SAXOPHONE

Penny Davis

BARITONE SAXOPHONE

Lori Sanders

TRUMPETS

Kevin D. Benton
Leslie Briggs * NHS - Principal
Dorothy Johnson
Dennis W. Kelly
Terry Lyhane *

FRENCH HORNS

Debra Fleming
Becky Steichen * NHS - Principal
Donna Trenary

TROMBONES

Chuck Hile
Kim Kelly
Karl Nesselrode (*) NHS - Principal
Cary Whitlock

TUBA

Joe Freeman

HARP

Cynthia Green *

PERCUSSION

Joe Fowler
Greg Leslie NHS
Danny Letourneau
Joel Young - Principal
Debbi Troxell

GUITAR

Danny Letourneau

ELECTRIC BASS

Paul Gray

ELECTRIC PIANO

Cynthia Green

* All State Band or Orchestra

(*) - ALL State Alternate

NHS - Ponca City High School National Honor Society

Principal - First chair players



Young Bands On The March



TWO FANFARES

FOR THE UNCOMMON BAND

by TOMMY J. FRY

To My Son "MIKE"

Copyright © 1975 by STUDIO 224, 224 S. Lebanon St., Lebanon, Ind. 46052
All Rights Reserved International Copyright Secured Printed in U.S.A.
Sole Distributorship STUDIO P/R, Inc.



STUDIO P/R, Inc., 224 S. Lebanon St., Lebanon, Ind. 46052

#1

C Part
Flute, Piccolo
Oboe, Bells

Clarinet
& Optional
Clarinet

Alto Sax
+ Horns

Tenor Sax

Baritone Sax

Trumpet 1

Trumpet 2

Trombone
& Baritone

Optional
Trombone

Optional
Baritone
& Bases

Snare Drum
Tenor Drum
Cymbals
Bass Drum

THREE ANTI-PHONAL FANFARES

For My Daughters Sherri Lynn and Coni Sue

Texas Tech '73

Composed and Arranged
by Tommy J. Fry

CONDUCTOR

A

W.W. 8va

ff Tpts., Hn., Sax.

Tbn. + Bar.

Bass, B.Sax. *ff*

S.D. B.D. Cym. *ff*

3

3

3

Tbn. Bar.

Bass, B.Sax.

3

Bar., Hn., Sax.

Bass, B. Sax.

M7414

Conductor

A CARL FISCHER BAND EDITION

FOUR FANFARES FOR THE FIELD

1. Harvey
2. Monahans Jr. High

3. Permian
4. Barry

by
TOMMY J. FRY

Q2433

INSTRUMENTATION

Conductor	1st Cornet (3)
Flute & C Piccolo (4)	2nd Cornet (3)
Oboe	3rd Cornet (3)
E♭ Clarinet	4th Cornet (3)
1st Clarinet (4)	1st & 3rd F Horns (2)
2nd Clarinet (4)	2nd & 4th F Horns (2)
3rd Clarinet (4)	1st Trombone (2)
Alto Clarinet	2nd Trombone (2)
Bass Clarinet	3rd Trombone
1st & 2nd Bassoons (2)	4th Trombone
1st Alto Saxophone (2)	Baritone $\frac{3}{4}$ (2)
2nd Alto Saxophone (2)	Baritone \mathcal{B} (2)
Tenor Saxophone (2)	Basses (Tubas) (5)
Baritone Saxophone	Percussion (4)

PRICE

Full Band	4.00
Parts, each40
Conductor75

CARL FISCHER, Inc. 

62 COOPER SQUARE, NEW YORK 10003
BOSTON • CHICAGO • LOS ANGELES • SAN FRANCISCO

Conductor

A CARL FISCHER BAND EDITION

THREE SYMPHONIC FANFARES

I. Nail 2. Robertson 3. McEntyre

by

TOMMY J. FRY

Q2430

Reference Copy

INSTRUMENTATION

Conductor	1st Cornet (2)
Flute & C Piccolo (3)	2nd Cornet (2)
1st & 2nd Oboes	3rd Cornet (2)
E♭ Clarinet	4th Cornet (2)
1st Clarinet (2)	E♭ Horns (4)
2nd Clarinet (2)	F Horns (4)
3rd Clarinet (2)	1st Trombone
Alto Clarinet	2nd Trombone
Bass Clarinet	3rd Trombone
1st & 2nd Bassoons	4th Trombone
Alto Saxophone (2)	Baritone ♯
Tenor Saxophone	Baritone ♮
Baritone Saxophone	Basses (Tubas) (2)
	Percussion (2)

PRICE

Full Band	3.00
Parts, each30
Conductor50

CARL FISCHER, Inc. 
62 COOPER SQUARE, NEW YORK 10003
BOSTON • CHICAGO • LOS ANGELES • SAN FRANCISCO

THREE SYMPHONIC FANFARES

Conductor

1. Nail

TOMMY J. FRY

A

B

A-B

A-B

2. Robertson

A

B

A-B

A-B

3. McEntyre

A

Musical score for section A, measures 1-5. Treble clef, 2/4 time. Bass clef, 2/4 time. Includes piano markings 'ff' and triplet markings '3'.

B

Musical score for section B, measures 6-10. Treble clef, 2/4 time. Bass clef, 2/4 time. Includes piano markings 'ff' and triplet markings '3'.

A-B

Musical score for section A-B, measures 11-15. Treble clef, 2/4 time. Bass clef, 2/4 time. Includes piano markings 'ff' and triplet markings '3'.

Musical score for the final section, measures 16-20. Treble clef, 2/4 time. Bass clef, 2/4 time. Includes piano markings 'ff' and triplet markings '3'.

Conductor

A CARL FISCHER BAND EDITION

THREE FANFARES

I. Knepley 2. Permian 3. Wilson

by

TOMMY J. FRY

Q2429

REFERENCE COPY

INSTRUMENTATION

Conductor	1st Cornet (2)
Db Piccolo	2nd Cornet (2)
Flute & C Piccolo (3)	3rd Cornet (2)
Oboe	4th Cornet (2)
Eb Clarinet	Eb Horns (4)
1st Clarinet (2)	F Horns (4)
2nd Clarinet (2)	1st Trombone
3rd Clarinet (2)	2nd Trombone
Alto Clarinet	3rd Trombone
Bass Clarinet	4th Trombone
Bassoon	Baritone \mathbb{B}
Alto Saxophones (2)	Baritone \mathbb{B}
Tenor Saxophone	Basses (Tubas) (2)
Baritone Saxophone	Percussion (2)

PRICE

Full Band	3.00
Parts, each30
Conductor50

CARL FISCHER, Inc.

62 COOPER SQUARE, NEW YORK 10003 • BOSTON
CHICAGO • DALLAS • LOS ANGELES • SAN FRANCISCO



TRIPTYCH

TOMMY J. FRY

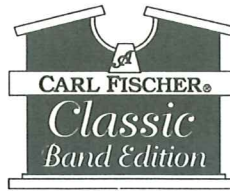
C161

INSTRUMENTATION

	Set	B	C
Full Score	1	1	
Conductor	1	1	
1st Violin	5	8	
2nd Violin	5	8	
Viola	3	5	
Cello	3	5	
Bass	3	5	
Piccolo	1	1	
1st Flute	1	1	
2nd Flute	1	1	
1st Oboe	1	1	
2nd Oboe	1	1	
1st Bb Clarinet	1	1	
2nd Bb Clarinet	1	1	
1st Bassoon	1	1	
2nd Bassoon	1	1	
1st & 2nd F Horns	2	2	
3rd & 4th F Horns	2	2	
1st Bb Trumpet	1	1	
2nd Bb Trumpet	1	1	
3rd Bb Trumpet	1	1	
1st Trombone	1	1	
2nd Trombone	1	1	
3rd Trombone	1	1	
Tuba	1	1	
Timpani	1	1	
Mallet Percussion	1	1	
Percussion	2	2	
Piano	1	1	

PRICE

Set B, incl. Full Score	18.00
Set C, incl. Full Score	24.00
Parts, each90
Conductor	2.00
Full Score	5.00



TRIPTYCH

TOMMY J. FRY

J658
INSTRUMENTATION

Full Score	1	Cornet 1 in B \flat	3
Piccolo	1	Cornet 2 in B \flat	3
Flute 1	4	Cornet 3 in B \flat	3
Flute 2	4	Horn 1 & 2 in F	2
Oboe 1	1	Horn 3 & 4 in F	2
Oboe 2	1	Trombone 1	2
Clarinet 1 in B \flat	4	Trombone 2	2
Clarinet 2 in B \flat	4	Trombone 3	2
Clarinet 3 in B \flat	4	Baritone T.C. in B \flat	2
Alto Clarinet in E \flat	2	Baritone B.C.	2
Bass Clarinet in B \flat	2	Tuba	5
Contra Alto Clarinet in E \flat	1	Timpani	1
Contrabass Clarinet in B \flat	1	Mallet Percussion	2
Bassoon 1 & 2	2	Xylophone, Vibraphone,	
Alto Saxophone 1 in E \flat	2	Chimes, Bells	
Alto Saxophone 2 in E \flat	2	Percussion	4
Tenor Saxophone in B \flat	2	Snare Drum, Bass Drum,	
Baritone Saxophone in E \flat	2	Crash Cymbals,	
		Small Suspended Cymbal,	
		Large Suspended Cymbal, Triangle,	
		Tenor Drum, Slap Stick, Temple Blocks	

SCORE

Arioso

from Kantate Nr. 156

by
Johann Sebastian
Bach

arranged for String Orchestra
by

Tommy J. Fry



S087

COMPLETE (8, 8; 3, 5; 3, 3; 5) \$40.00
SCORE 5.00
PARTS, ea. 1.50

SOUTHERN MUSIC COMPANY
SAN ANTONIO, TEXAS 78292

Full Score

a Carl Fischer **BAND** Edition

BLASENFEST

TOMMY J. FRY

J661

INSTRUMENTATION

Full Score.....	1
C Piccolo.....	1
1 st Flute.....	3
2 nd Flute.....	2
1 st Oboe.....	1
2 nd Oboe.....	1
1 st Clarinet.....	4
2 nd Clarinet.....	4
3 rd Clarinet.....	4
Alto Clarinet.....	2
Bass Clarinet.....	2
Eb Contra Bass Clarinet.....	1
BBb Contra Bass Clarinet.....	1
1 st Bassoon.....	2
2 nd Bassoon.....	2
1 st Alto Saxophone.....	2
2 nd Alto Saxophone.....	2
Tenor Saxophone.....	2
Baritone Saxophone.....	1
1 st Trumpet.....	3
2 nd Trumpet.....	3
3 rd Trumpet.....	3
1 st F Horn.....	1
2 nd F Horn.....	1
3 rd F Horn.....	1
4 th F Horn.....	1
1 st Trombone.....	2
2 nd Trombone.....	2
3 rd Trombone.....	2
Baritone T.C.....	2
Baritone B.C.....	2
Basses (Tubas).....	5
Timpani.....	1
Snare Drum, Bass Drum.....	2
Tenor Drum, Cymbal.....	2
Xylophone.....	1

PRICE

Complete set, Inc. Full Score.....	
Parts, each.....	
Full Score.....	

CARL FISCHER, INC.

62 COOPER SQUARE, NEW YORK 10003 • BOSTON • CHICAGO • DALLAS • LOS ANGELES • SAN FRANCISCO

FREISCHUTZ QUICKSTEP

CLAUDIO GRAFULLA

Arranged by Tommy J. Fry

J666

INSTRUMENTATION

Conductor	1
C Piccolo	1
1st Flute	3
2nd Flute	2
1st & 2nd Oboes	2
1st Clarinet	4
2nd Clarinet	4
3rd Clarinet	4
Alto Clarinet	2
Bass Clarinet	2
Bb Contra Bass Clarinet	1
1st & 2nd Bassoons	2
1st & 2nd Alto Saxophones ..	4
Tenor Saxophone	2
Baritone Saxophone	1
1st Cornet	3
2nd Cornet	3
3rd Cornet	3
1st & 2nd F Horns	2
3rd & 4th F Horns	2
1st Trombone	2
2nd Trombone	2
3rd Trombone	2
Baritone $\frac{4}{4}$	2
Baritone $\frac{2}{2}$	2
Basses (<i>Tubas</i>)	5
Percussion	4

PRICE

Complete set, incl. Conductor	15.00
Parts, each75
Conductor	1.75

CARL FISCHER, Inc.

PASSACAGLIA & ALLEGRO

TOMMY J. FRY

J660

INSTRUMENTATION

Conductor	1
C Piccolo	1
Flute	5
Oboe	2
1st Clarinet	4
2nd Clarinet	4
3rd Clarinet	4
Alto Clarinet	2
Bass Clarinet	2
Bassoon	2
1st Alto Saxophone	2
2nd Alto Saxophone	2
Tenor Saxophone	2
Baritone Saxophone	1
1st Cornet	3
2nd Cornet	3
3rd Cornet	3
1st & 2nd F Horns	2
3rd & 4th F Horns	2
1st Trombone	2
2nd Trombone	2
3rd Trombone	2
*Baritone $\frac{2}{2}$	2
*Baritone $\frac{3}{4}$	2
Basses (Tubas)	5
Percussion	4
Timpani	1
Xylophone	1

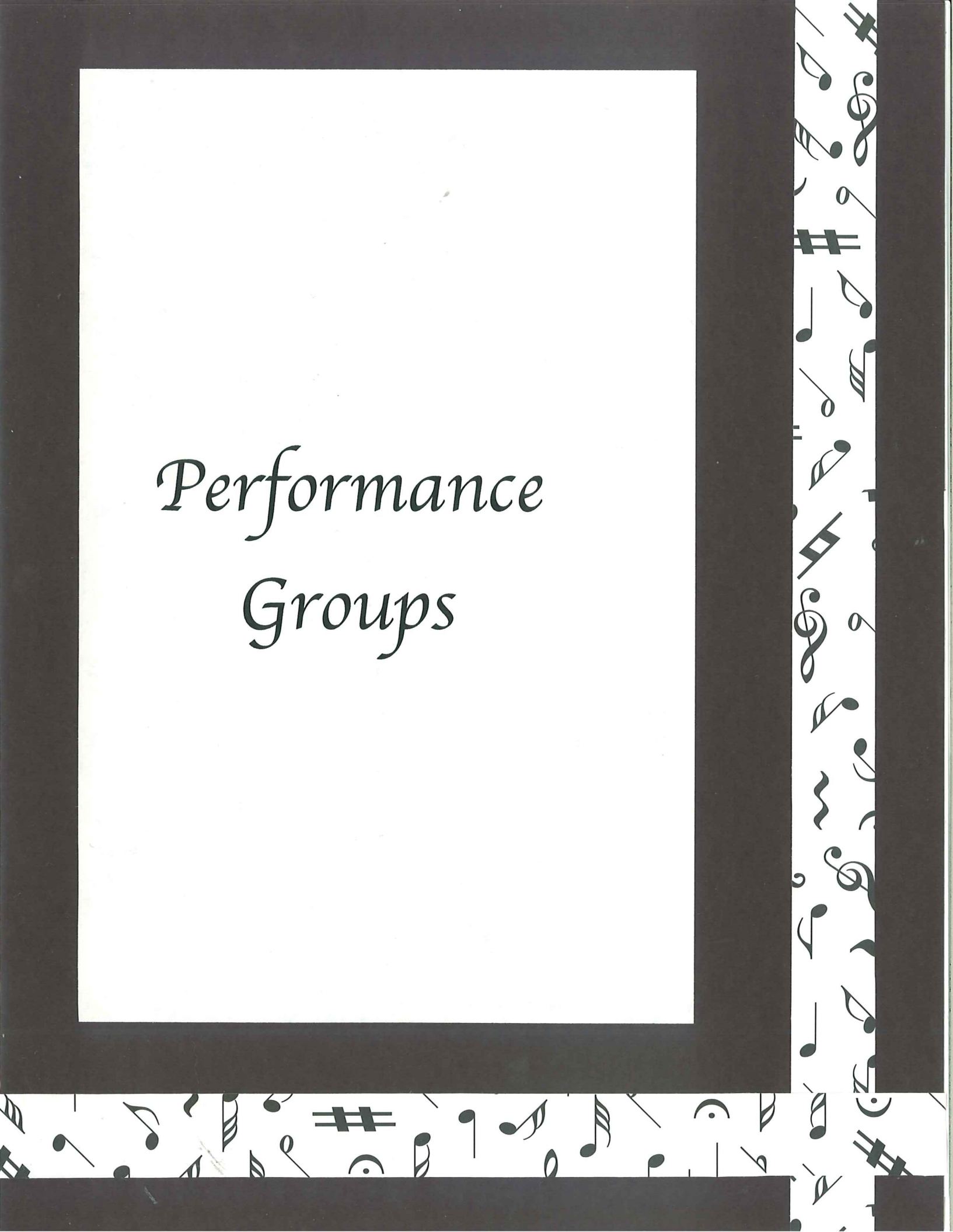
*Parts printed back-to-back

PRICE

Complete set, incl. Conductor	13.50
Parts, each	1.50
Conductor60

CARL FISCHER, Inc.

*Performance
Groups*





DEPARTMENT OF MUSIC *Scholarships*

Each year over \$50,000 in scholarships are awarded to our music students. A new scholarship program for the 1992-93 year will provide students with an additional \$16,000 in music scholarships. Included in this program are: Gordon McMillan Scholarship for Church Music, \$5,000 per year; Eysen Scholarship in Piano, \$1,000 per year; and 10 new performance scholarships at approximately \$1,000 each in addition to academic enhancements.

DEPARTMENT OF MUSIC *Summer Camp*

BI-STATE Honor Band and Choir attracts top young musicians from Texas and New Mexico each summer for an intensive one week musical experience at a nominal price.

For details concerning degrees and scholarship auditions, call or write:

James A. Rennier, Chair
Department of Music
Box 698, McMurry Station
Abilene, Texas 79697
(915) 691-6299 or 691-6295



McMURRY UNIVERSITY

*Department
of Music*



DEPARTMENT OF MUSIC *Faculty*

James A. Rennie serves as Chair of the Department of Music as well as Assistant Professor of Music. His teaching duties include applied percussion, percussion ensemble and related courses. Mr. Rennie received his Bachelor of Music degree in Percussion Performance from Indiana University where he also was awarded the Performer's Certificate. His Master of Music in Percussion Performance is from the University of Texas.

Prior to coming to McMurry University, Mr. Rennie was Principal Percussionist and Assistant Timpanist of the Austin Symphony Orchestra for eight years. His extensive performance background includes the Austin Lyric Opera, San Antonio Symphony, San Antonio Festival, Houston Opera, San Angelo Symphony, Midland-Odessa Symphony, and has recording credits with Walt Disney Productions and others.

Mr. Rennie has appeared as a soloist with the Midland-Odessa Symphony, Austin Symphony Orchestra, and was the winner of the 1983 University of Texas Concerto Competition.

Tommy J. Fry is currently Associate Professor of Music teaching courses in Theory, Ear Training and Conducting after having served eleven years as Director of Bands at McMurry. He has been a guest conductor and clinician with over 400 appearances. Mr. Fry has conducted premier performances of his works at the Music Educators National Conference, Oklahoma Music Educators Conference, and Texas Bandmasters Clinic/Convention.

As a composer Mr. Fry has had fifteen works published by Carl Fisher, Inc. and Columbia Pictures/Belwin Corp. His works, ranging from music for marching band to symphony orchestra, have appeared on contest lists in thirty states and have been performed by numerous all-state bands and orchestras. His fanfares for the marching band were for many years the "traditional" opening for shows by Texas Tech University and the University of Arkansas, receiving performances at nationally-televised post-season bowl games.

Suzanna Puckett has performed extensively as both a piano recitalist and chamber player. Her performances include major festivals in England, Spain, and Portugal.

Ms. Puckett has played throughout the United States under the auspices of Columbia Artists with Linda



DEPARTMENT OF MUSIC *Facilities*

Amy Graves Ryan Fine Arts Center houses the Department of Music and contains a modern 175-seat recital hall with a Steinway Concert Grand Piano, choral rehearsal room, classrooms, two organ practice rooms and fifteen private practice rooms.

Radford Auditorium in Modern Gothic architecture houses a 1200-seat auditorium and a 100-foot Carillon Tower.

Bynum Band Hall is one of the most advanced band rehearsal buildings in the state. This two-story structure contains a large rehearsal room, offices, storage, and additional practice rooms.

DEPARTMENT OF MUSIC *Degrees*

- ✦ **Bachelor of Music Education** with vocal or instrumental concentration.
- ✦ **Bachelor of Music** with vocal, instrumental or keyboard concentration.
- ✦ **Bachelor of Music** with Church Music concentration.
- ✦ Our unique performance degrees allow for teacher certification with a minimum of additional post-baccalaureate course work.

DEPARTMENT OF MUSIC *Ensembles*

- ✦ Chanters ✦ Vocal Point ✦ Concert Band
 - ✦ Marching Band ✦ Jazz Band
- ✦ Brass Ensemble ✦ Woodwind Ensemble
 - ✦ Percussion Ensemble
- ✦ Abilene Collegiate Symphony Orchestra
 - ✦ Abilene Philharmonic Orchestra



Tommy J. Fry, Conductor

Thursday, April 26, 1990
8:00 p.m.

Radford Auditorium
McMurry College

PROGRAM

Polka and Fugue
from "Schwanda, the Bagpiper"Jaromir Weinberger

La Virgen de la MacarenaArr. Charles Koff
Trumpet Soloist — Phillip Mooney
Conductor — Thomas Fairlie

Send In The ClownsStephen Sondheim

Concertino, Op. 26Carl Maria Von Weber
Clarinet Soloist — Tonya Tilley

Cheerio MarchEdwin Franko Goldman

Symphony No. 1Daniel Bukvich
I. Prologue
II. Seeds In The Wind
III. Ave Maria
IV. Fire Storm

FandangoFrank Perkins / Floyd Werle

McMurry College
Department of Music
presents
McMurry College Band
Tommy J. Fry, conductor

program

Festa! **Elliot Del Borgo**

English Folk Song Suite **Ralph Vaughn Williams**
I. March-"Seventeen Come Sunday"
II. Intermezzo-"My Bonny Boy"
III. March-"Folk Songs from Somerset"

Hands Across The Sea **John Philip Sousa**
Dr. R. T. Bynum, conductor

Triptych **Tommy J. Fry**

Sleigh Ride **Leroy Anderson**

Creole Belles (Ragtime March) **J. Bodewalt Lampe**

Symphonic Suite **J. Clifton Williams**
I. Intrada
II. Chorale
III. March

3 p.m., December 10, 1989
Little Theatre, Ryan Fine Arts Center
McMurry College

McMurry College

Abilene, Texas

MCM

MCMURRY
C O L L E G E

Presents

**The McMurry College
Concert Band**

Tommy J. Fry

Conductor

**Spring Tour
1989**

SPRING CONCERT

McMurry College Band

Tommy Fry, Director

Repertoire

Fanfare for the Common Man Aaron Copland
Overture to "Candide" Leonard Bernstein/Grundman
Symphony No. 3 (excerpt) C. Saint-Saen/Dennis
Amparito Roca Jaime Texidor/Winter
Cole Porter, A Symphonic Portrait Cole Porter/Robinson

Intermission

McMurry Jazz Ensemble

Thomas Fairlie, Director

Repertoire

Birdland.....Zawinul/Kercner
Blues in the NightMercer/Arlen/Hooper
One More Time, Chuck Corea.....Puerling/Bocook
Misty.....Garner/Barduhn
Country Road.....Wheeler
Lovin' StuffSpera

Thursday, April 21, 1988
8:00 p.m. - Radford Auditorium
McMurry College
Abilene, Texas

BI-STATE BAND

Tommy Fry, *Director*

Teaching Staff

Jan Scott, *Woodwinds*

Wayne Popp, *Woodwinds*

Tom Fairlie, *Brass*

Michael Hooley, *Percussion*

Program

Symphony No. 3 Vittorio Gianinni
Mvt. 4

Rhoysmedre Ralph Vaughan Williams

Overture to "Candide" Leonard Bernstein

Canticle of the Creatures Jim Curnow

I. Prologue

II. Brother Sun

III. Sister Moon and Stars

IV. Brother Fire

Stars and Stripes Forever John Phillip Sousa

Piccolo

Genevieve Delapu, *Houston*

Flutes

Lisa Brunner, *Abilene*

Dani Pelayo, *San Antonio*

David Fair, *Livingston*

Tracey Costello, *Houston*

Kim Sopata, *Wichita Falls*

Connie Brown, *Abilene*

Kathryn Lenart, *Plano*

Shelly Zickefoose, *Lubbock*

Tracy Wolf, *Odessa*

Caerie Collins, *Irving*

Clarinets

Pearl Gonzales, *Abilene*

Maren Mitchell, *San Antonio*

Tiffany Henry, *Midland*

Cathy Mosley, *Gardendale*

Cheryl Hollingworth, *Irving*

Shelia Lancaster, *Midland*

Carlos Casillas, *Houston*

Robin Mashburn, *Abilene*

Vanessa McCaffrey, *Monahans*

Ron Velasco, *Plano*

Amy Younf, *Amarillo*

Anna Carrillo, *Odessa*

Lisa Sopata, *Wichita Falls*

John Walters, *Austin*

Terrie Lagrada, *El Paso*

Nikki Dawson, *Plano*

Bassoons

Amy Latham, *Odessa*

Michelle Furlow, *Odessa*

Amy Gray, *Oklahoma City, OK*

Oboe

GeNea Warren, *Duncanville*

Cyndi Brown, *Carrollton*

Elizabeth Marshall, *Farmers Branch*

Alto Sax

Chad Anson, *Houston*

Ben Rosales, *Abilene*

Tenor Sax

Jeff Peden, *Wichita Falls*

Bari Sax

Aaron Saenz, *El Paso*

Bass Clarinet

Tracye Shaw, *Round Rock*

Jerry Gauna, *Rotan*

Greg Walters, *Austin*

Trumpets

Raquel Rodriguez, *Kermit*

Jesse Vasquez, *Odessa*

Kelly Pace, *Snyder*

Ty Corbin, *Olney*

Tim Bradberry, *Iowa Park*

Jessie Galvan, *Abilene*

Brian Reilly, *Wichita Falls*

James Munger, *Round Rock*

Dusty Payne, *Marshall*

Julie Doty, *Snyder*

Blake Felts, *Brownwood*

Richard Dennis, *Midland*

Angela Brumley, *Hereford*

French Horns

John Rauchuber, *San Antonio*

Carl Bower, *Abilene*

Kevin Wallis, *Houston*

Mandy Skidmore, *Round Rock*

John Burns, *Frienswood*

Joseph Sun, *Houston*

Marcell Elsgood, *Abilene*

Trombones

Aaron Horovitz, *Houston*

Jayson McDonald, *Abilene*

Jake LeMay, *Killeen*

Chris Magonigal, *Killeen*

Jason Hubbard, *Abilene*

Marco Ramirez, *El Paso*

John Price, *Crowley*

Joe Casas, *Sweetwater*

Kevin Johnson, *Valley Mills*

Baritones

Gabriel Balderas, *Sweetwater*

Melvin Harris, *Dallas*

Evan Wilcox, *Dallas*

Jordan Hubbard, *Abilene*

Tuba

John Finnell, *Dallas*

Rommell Cordova, *Frienswood*

Kendall Prinz, *Taylor*

Jim Brockington, *Killeen*

Eric McClellan, *Abilene*

Reenie Ekhler, *Duncan, OK*

Scott Tidwell, *Kermit*

Tony, Phelps, *Odessa*

Percussion

Chris Broomel, *Abilene*

Jason English, *Abilene*

Will Evans, *Odessa*

Jason Humble, *Odessa*

Janelle Jones, *Midland*

Beki Stanley, *Midland*

McMurry College Department of Music
presents

The Tenth Annual Bi-State Honor Band

Tommy Fry, *Conductor*

PROGRAM

Golden Jubilee Alfred Reed

First Suite in Eb Gustav Holst

- I Chaconne
- II Intermezzo
- III March

Irish Tune from County Derry Percy Grainger

Folk Dances Dimitri Shostakovich

Sons of the Brave Thomas Bidgood

Eternal Father, Strong to Save Claude T. Smith

Bi-State Band Staff

Michael Hooley, *director, percussion*

Tom Fairlie, *brass*

Jan Scott, *woodwinds*

Wayne Popp, *woodwinds*

Rob Belcher, *brass*

McMURRY COLLEGE

presents

T H E S E V E N T H A N N U A L

B I - S T A T E H O N O R C H O I R A N D B A N D

G R A N D C O N C E R T

Bi-State Choir

George Biffle, Director

Kittery

William Billings

God Be In My Head

John Rutter

Listen to the Lambs
Soprano Solo

R. Nathaniel Dett

Blow, Blow, Thou Winter Wind

John Rutter

Come, Thou Fount of Every Blessing

arr. Lloyd Pfautsch

Sing Unto God

Paul Fetler

Hark, I Hear the Harps Eternal

arr. Alice Parker

Black is the Color of My True Love's Hair

arr. Joyce Barthelson

In This Very Room

Ron & Carol Harris

Bi-State Band

Tommy Fry, Director

A Festival Prelude

Alfred Reed

Finale, from Symphony No. 5

Shosta Kovich/Righter

Irish Tune from County Derry

Grainger

Semper Fidelis

Sousa

Do No Go Gentle Into That Good Night

Del Borgo

Eternal Father, Strong To Save

Smith

Friday, June 13, 8:00 p.m.

and

Saturday, June 14, 2:00 p.m.

1986

Ryan Fine Arts Center

McMURRY COLLEGE MUSIC DEPARTMENT

PRESENTS

THE McMURRY COLLEGE BAND

Conductor: TOMMY J. FRY

—PROGRAM—

- Flourish For Wind Band* R. Vaughn Williams
Lincolnshire Posy Percy Aldridge Grainger
- I. "Dublin Bay" (Sailor's Song)
 - II. "Harkstow Grange" (The Miser and his Man - A Local Tragedy)
 - V. "Lord Melborne" (War Song)
 - VI. "The Lost Lady Found" (Dance Song)
- Blue Bells of Scotland - Air and Variations* Pryor/Pearson
Trombone Soloist: John McEntyre
- Air from Suite in D Major* J. S. Bach/Philip Lang
- Pageant* Vincent Persichetti
- Festal* Elliot Del Borgo

—Intermission—

THE JAZZ ENSEMBLE

—PROGRAM—

- Moon River* Mancini/Mercer/Cobine
- Look For The Silver Lining* DeSylva/Kern/Cobine
Vocalist: Dr. Morris Baker
- Jolie* Chuck Sayre
Trombone Soloist: Terry Everts
- Pequenos Reyes* Ken McCoy
- Edward H.* Jim McGrath
Trumpet Soloist: Randy Hayes
- Basie Straight Ahead* Sammy Nestico
- Charley McFarley* Chuck Sayre
- April's First* Jim McGrath
- Ain't It The Truth* Don Schamber

3:30 p.m.
April 28, 1985
Student Center
McMurry College



Department of Music

presents

NANCY KING SANDERS
Assistant Professor of Music
McMurry University

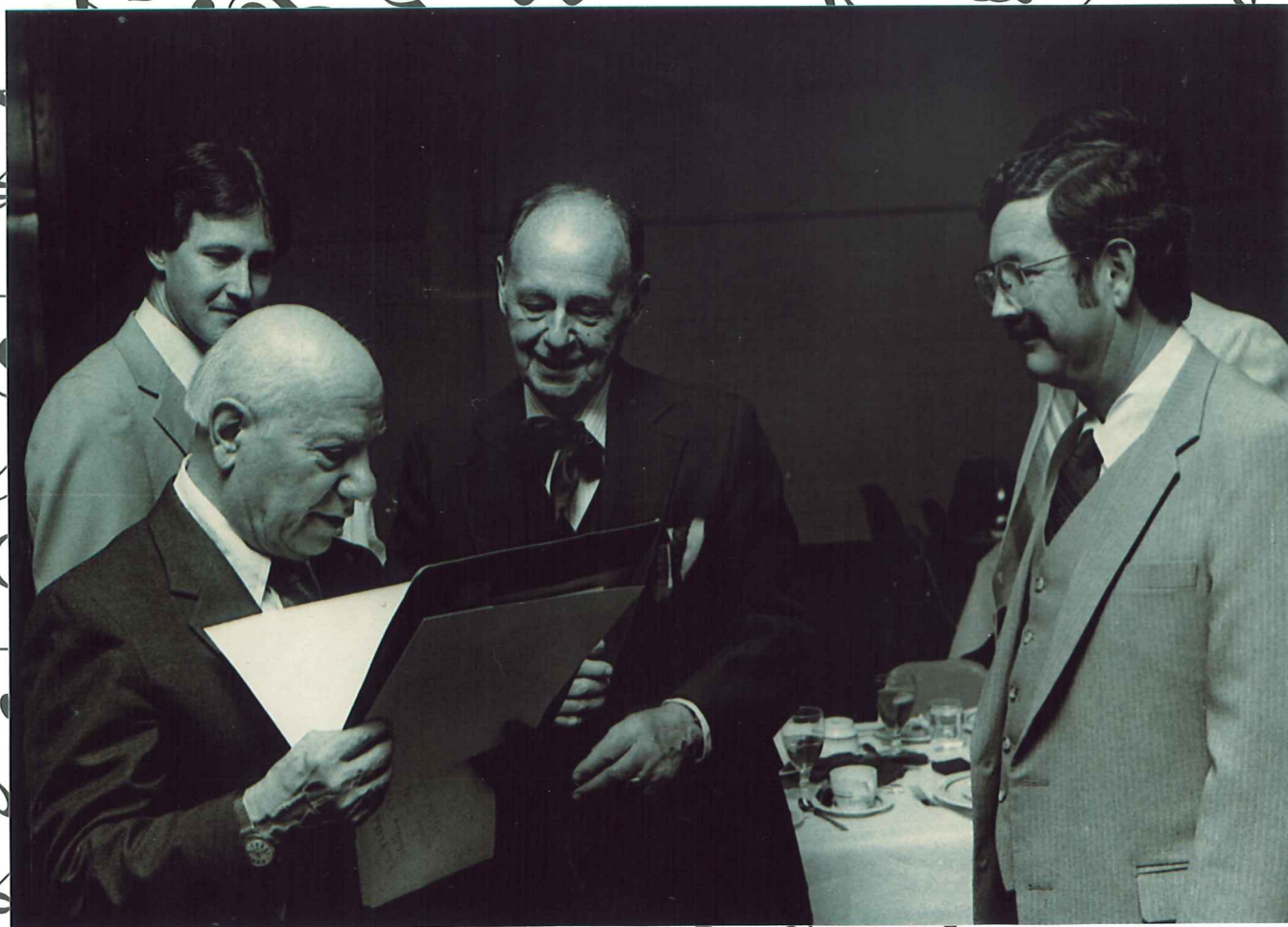
DR. MARY KAREN CLARDY
Associate Professor of Music
The University of North Texas

in a

CLARINET/FLUTE SEMINAR

Saturday, April 4, 1992, 2:00 - 5:00 p.m., clarinet
Sunday, April 5, 1992, 2:00 - 5:00 p.m., flute

Location: Amy Graves Ryan Recital Hall,
McMurry University



Dr. Raymond T. Bynum

Tommy J. Fry

Doug Kincaid

Dr. Bill Revelli

M C M U R R Y C O L L E G E B A N D

Raymond T. Bynum, Conductor

P R O G R A M

- I. SUIT FOR BAND, ATLANTIS (The Lost Continent) SAFRANEK
A. Nocturne and Morning Hymn of Praise
B. A Court Function
C. Love Song (The Prince and Aana)
D. Destruction of Atlantis
- II. SOLO FOR CORNET, STARS IN A VELVETY SKY CLARKE
Tommy Fry
- III. MARCH PARAPHRASE, THE WORLD IS WAITING FOR THE SUNRISE ARR. ALFORD
- IV. SOLO FOR PIANO, THE DREAM OF OLWEN WILLIAMS
Bonnie Boyd
- V. HUNGARIAN DANCES NUMBERS 5 and 6 BRAHMS
- VI. SOLO FOR SAXOPHONE, ESTILIAN CAPRICE PAUL
Gary Zook
- VII. NOVELTY, THE LITTLE BROWN JUG GOES TO TOWN BERGEIM
Wayne Parker
- VIII. QUARTET FOR SAXOPHONES SELECTED
Gary Zook, Nelda Vaughter, Margaret Grisham, Rosser Menoher
- IX. SOLO FOR MARIMBA
Servando Trevino, Margaret Grisham, accompanist
- X. LATIN AMERICAN RHUMBA, HEY PEDRO! MORRISSEY
- XI. OVERTURE, EGMONT BEETHOVEN
- XII. NOVELTY, POP GOES THE WEASEL ARR. ORIGINAL
- XIII. CHORUS AND BAND, BATTLE HYMN OF THE REPUBLIC ARR. RINGWALD

THE STAR SPANGLED BANNER



McMurry College Concert Band

~~~~~

“And these, having set their course into the sun, sailed on, as was their destiny, and neither did they waver nor look back.”

This, the 1955 graduation concert of the McMurry College Band, is dedicated to the twelve seniors who have given of their time and talent to the band and to McMurry. Out of constancy, devotion, and steadfastness grow the attitudes that make for happy and purposeful living. With these, who enter upon graduation the McMurry College Band Hall of Fame, go our best wishes, now and always!

Miss Georgi Bean, Weatherford, three year member; major, elementary education  
 Miss Margaret Grisham, Junction, four year member; major, music education  
 Miss Melba Rucker, Abilene, four year member; major, elementary education  
 Mr. Bill Adkins, Haskell, four year member; major, elementary education  
 Mr. Lowell Bynum, Snyder, four year member; major, music education  
 Mr. Jack Darnell, Abilene, four year member; major, music education  
 Mr. Bill Fiveash, Abilene, four year member; major, business administration  
 Mr. Tommy Fry, Sweetwater, four year member; major, music education  
 Mr. Jim Pollard, Vernon, four year member; major, speech  
 Mr. Leroy Wegner, Breckenridge, four year member; major, business administration  
 Mr. Orlie White, Silver City, N. M., four year member; major, english  
 Mr. Kenneth Worsham, Eden, four year member; major, music education

### *Program*

March, “Pomp and Circumstance” ..... Elgar  
 Overture, “Morning, Noon, and Night in Vienna” ..... von Suppe  
 “Polonaise” ..... Beethoven  
 Overture, “Orlando Palandrino” ..... Haydn  
 “Procession of the Sardar” ..... Ippolitov-Ivanov  
 (From Caucasian Sketches)  
 Overture, “La Forza Del Destino” ..... Verdi  
 McMurry Alma Mater and traditional ceremony honoring band seniors  
 (Encores, marches conducted by graduating band directors)