



**SOUTHWESTERN UNIVERSITY**

**Commencement**

DR. ROY SHILLING **May 11, 1991** DR. GEORGE E. NELSON

MEMBERSHIP



CERTIFICATE

# HALL OF FAME

## Phi Beta Mu

INTERNATIONAL SCHOOL BANDMASTER FRATERNITY

HONORS

### George Nelson

AS A MEMBER OF THE Alpha CHAPTER HALL OF FAME

AND IS ENTITLED TO ALL THE RIGHTS AND PRIVILEGES THEREBY CONFERRED



Van B. Ryzdale  
PRESIDENT

Durward Howard  
SECRETARY

24 July 1995

DATE

George Edward Nelson was born in Taylor, Texas on June 12, 1928, the son of Ruth Agnes and George August Nelson. He has two sisters, Anna Louise Engelhardt of Corpus Christi and Eileen Thompson who lives in San Marcos.

While in the 3rd grade, George was introduced to the world of music when the band director, Mr. Tyrie Lee, and an instrumental salesman visited the Nelson home for the purpose of selling an instrument to George's older sister, Eileen. In the short time they were there George showed an unusual aptitude for the cornet, and when the visitors left, Eileen had a clarinet and George had his first cornet. From that moment, he was headed for a career in music. Special arrangements had to be made in order for George, who was in the 5th grade, to join the high school band where he was tabbed the "band baby" by the local newspaper.

After graduating from Taylor High School in 1945, George enrolled at Southwestern University and became a music education major. His college career was interrupted after one year when he enlisted in the Army following a successful audition for the U.S. Army Recruiting Band stationed at Fort Sam Houston in San Antonio. As often happens in military life, George suddenly found himself on a train to Camp Lee, Virginia where he enjoyed six weeks of basic training. Naturally, this was not part of the deal when he enlisted. At the conclusion of basic, George was assigned to the Band Training School and received Most Outstanding Bandsman award. Following this, he served in the eighth Army Band stationed in Yokohama, Japan.

After completing military service in 1948, George returned to Southwestern University and graduated in 1950 with the Degree of Bachelor of Music Education. In June of the same year, George married Frances Deckard who had also graduated from Southwestern with a degree in vocal music education. George decided very late in the summer to find employment as a band director. He and Frances traveled to a place in the Rio Grande Valley known as Edcouch-Elsa. They were not impressed with the mid-afternoon heat and the apparent absence of any form of human life. They decided to meet the Superintendent, tell him thanks but no thanks, and beat a hasty retreat. The superintendent was quite a salesman, however, and before they knew what happened, George signed a contract to be their first full-time band director, and Frances signed a contract to teach everything but music in the 6th grade. All of this for the combined salary of \$5000. George started a band program that ultimately produced the State AA Honor Band in 1963. That first year was so lean, however, that the band learned to play only one march really well. Frances remembers standing on the street in a Harlingen parade waiting for the Edcouch-Elsa band to appear when she overheard James Murphy remark to Warren Reitz, "Here comes Storm King."

The Nelsons moved to Georgetown in 1954 where George had an outstanding band, receiving straight 1st division ratings. Georgetown really became home when, in 1958, George was hired to be the band director at Southwestern University. Because of the small size of the University, George directed the concert and jazz bands, taught instrumental methods, marching band techniques, instrumental conducting, brass and woodwind pedagogy, gave brass and woodwind lessons, counseled music education majors, supervised student teaching, and attended required chapel. Thankfully, the music department grew, and his teaching load was reduced to only 15 semester hours. He continued to find time, however, to be musical director for more than 20 years of musical productions jointly sponsored by the Department of Theatre.

George worked very hard to recruit students to Southwestern, not only to enlarge the band, but also the overall music department. His efforts helped build the enrollment to an all-time high, especially in music education which he has always considered to be the foundation of a college or university music

program. Through his leadership as Music Department Chairman, the music program at Southwestern gained a reputation of excellence. He had many outstanding bands and toured the state yearly to perform and recruit. When, in 1990, the small colleges and universities were invited to submit a tape to choose a band to perform at the 1991 TMEA Convention, Southwestern's band had the great honor to be selected. It was perhaps the highlight of George's career as a band director and fittingly occurred during his last year before retirement. In reflection, however, he considers the most rewarding experiences of his 32 year tenure to be the contributions he made to the many music education students who graduated to become public school music teachers. Many are outstanding band directors in the state, several having achieved Honor Band recognition. George treasures the remarks of one of his students who paid tribute to him upon his retirement with the following comments: "He has always shown a great interest in the welfare of his students and helped them get important band positions in the state. He has been able to give me opportunities that other teachers wouldn't have." As an indication of his popularity and respect on campus, he was chosen Mr. Homecoming in 1973.

In addition to the Bachelor of Music from Southwestern, George has Master of Music and Doctor of Musical Arts Degrees from The University of Texas at Austin. He has also done graduate study at The University of Colorado and Eastman School of Music where he studied conducting with Frederick Fennell. He has been a member of the Texas Bandmaster's Association, Music Educators Association, Texas Music Adjudicators Association, College Band Directors National Association, Phi Beta Mu, and is listed in Leaders in Education and International Who's Who of Musicians. He has judged many band contests during the past 32 years, directed All-Region Bands in most of the regions in the state, and has been a very popular and highly successful clinician.

George and Frances have three children: Julie, All-State oboist, lives in Kingwood with her husband, Ronny Clark, and their two children, Reed and Kelly; Ann, All-State flutist, is married to Bill Peace, and they live in Austin with their two daughters, Rachel and Rebecca (Bill and Ann are both members of Phi Beta Mu); Jon lives in Austin with his two sons, Christopher and Nicholas. According to George, Jon is the best trombone player to never make All-State.

George considers himself to be extremely blessed because of 45 years of marriage to Frances, 40 years of unforgettable teaching experiences, and wonderful children who all have jobs and are considerate enough to allow George and Frances to babysit occasionally.

# MUSICMAKER

## Bandleader Nelson wraps up 32-year local teaching career

By Roger Pinckney  
Sun Staff Writer

Most people don't decide on their career path until they finish high school or college. Others change their occupations two or three times before they find something they really enjoy.

But George Nelson knew early on what he wanted to pursue as a life-long profession — music. And he has never changed his mind.

Nelson, the Southwestern University music department chairman and band director who is retiring at the end of the spring semester, said he settled on music when his parents gave him a cornet.

"My folks bought me a cornet when I was in third grade, and I knew right then that all I ever wanted to do was play the cornet," Nelson said. "It never occurred to me that I would do anything but get into music.

"This is the one thing that I do well," he added. "If I wasn't a band director I don't know what I would have done."

Nelson, a native of Taylor, graduated from SU in 1950 with a bachelor's degree in music education. He immediately landed a job in the Edcouch-Elsa school district in South Texas.

After starting the band program at Edcouch-Elsa and building it up for four years, Nelson moved back to Georgetown in 1954 to direct the Georgetown High School band program until 1958. Then he got "lucky" by getting hired by SU.

"It was offered to me because the dean of fine arts was sufficiently impressed with me as a student," he said. "I jumped at the opportunity. It was unusual then and it's even more rare today for a person teaching in high school to jump to a higher level in college."

### Best For Last

Nelson's most rewarding moment in his 32-year stint may have been in February when under his direction the SU Symphonic Band performed before band directors and boosters at the 1991 Texas Music Educators Association convention in San Antonio.



Sun/Daniel Byram

After serving as Southwestern University's Music Department Chairman and Band Director for 32 years, George Nelson is ready to retire. Nelson, a Taylor

native, plans to stay involved in music and work on his golf game after he passes the conductor's baton to his successor.

The annual convention draws a multitude of talented high school and collegiate musicians from around the state.

This is the first year the SU band has qualified for the event, but it is also the first year the school applied, he said. To qualify, a college band must send in a tape of a performance at the end of the previous school year.

Band directors then judged SU's tape against a number of bands at colleges of similar enrollment. Judges picked SU's band as the winner in its classification.

"This is the first time I ever felt I had a good enough band to turn in a tape," he said. "We had an excellent concert and we impressed a lot of people. This may be a big help to SU in recruiting.

### Time To Move On

In the last few years, however, Nelson, 62, noticed that the spunk he needed to conduct a university band and head the music department may have been slipping from his repertoire. He thought it over and concluded that he needed a permanent break.

"I didn't want my last year to be anything but a strong year," he added. "I worked harder because the convention really generated the motivation I had to have."

SU's symphonic band consists of 40 to 45 members and is a wind-ensemble, he said. In the convention performance, Nelson's pupils played primarily contemporary numbers.

"This is probably the best band we've ever had, and I feel that it's time to let someone who has the same enthusiasm I used to have to come in and build upon what I started. Having completed what I think is my best year at SU, I feel it's time to step aside."

"The only thing that really sums it up is that I'm tired of teaching," he said. "I've done basically the same thing for 32 years and it takes a lot of energy to recruit students. One has to

motivate oneself to get up on the podium and motivate the students day after day, and I've lost some of that enthusiasm.

Money was definitely not an incentive for him to get involved with the music profession. Instead, Nelson got into music and persevered for two reasons — because it was his one love other than his wife, and because he cared deeply for his students.

"Teaching doesn't pay as much as a lot of professions," he conceded. "You have to have more desire than just making a lot of money. You have to care about your students and motivate them to perform better. I think that's the commitment that makes teaching special.

"The thing I'm going to miss the most is the students," he said. "They're what kept me in teaching."

Carole Lee, associate dean of the School of Fine Arts, attributed Nelson's success to his popularity among students and his dedication to his work.

"Nelson has given dedicated service, with a special concern for students and their music education," Lee said. "He has been a major influence on many band directors, particularly in Texas."

### His New Life

However, Nelson does not intend to slow down after his retirement. Although he is an "avid golfer" and will play golf several more times a week, he plans to stay involved with music.

"I'm not going to have a daily agenda, and the prospect of being free of not having to do any one thing is just unbelievable.

"I'm going to stay active in the music world," he added. "I'm going to do quite a bit of judging in the state and I'm going to try to maintain my contacts with friends and former students."

*Austin American 5/9/91*

# Southwestern band's leader sets down baton

**By Christie Schroeter**

American-Statesman Correspondent

GEORGETOWN — When George Nelson retires from Southwestern University at the end of June, he'll be giving his right arm a rest after 32 years as the symphonic band director.

Nelson, 62, said time has taken its toll and he's ready to step down.

"The body and the mind that wields the baton are getting weary," he said with a smile.

The Taylor native said it will not be easy to leave a school he has watched change and grow for most of his professional life.

"I have strong ties here that can never be broken," said Nelson, who met his wife, Frances, while he was a student at Southwestern. Two of his three children received degrees from the university.

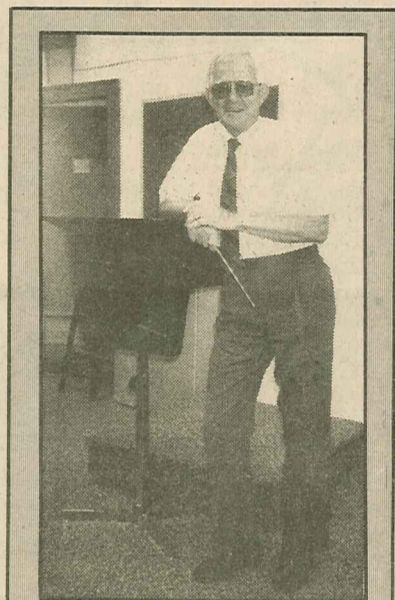
Nelson, who teaches instrumental music education and served on the school's admissions committee, received his master's degree and his doctorate from the University of Texas at Austin. He said he has been teaching long enough to see second-generation students enter his classes and go on to careers directing bands.

"Over the years, we have had students who are teaching now in colleges across the country," Nelson said.

Ellsworth Peterson, a professor of music history at Southwestern who has worked with Nelson since 1965, says he knows his colleague will be missed.

"He's always shown a great interest in the welfare of his students and helped them get important band positions throughout the state," Peterson said.

Jason Geistweidt, a junior majoring in music education at the university, recalled that when he was a high school senior he received a phone call from Nelson. Geistweidt, 21, had indicated on his admissions form that his major was music, and Nelson wanted to



**“The body and the mind that wields the baton are getting weary.”**

**— George Nelson,  
SU music professor**

encourage him and offer his assistance.

"You don't get that personal contact anywhere else," Geistweidt said.

In the three years he has been a student in Nelson's classes, Geistweidt said, "He's been able to give me opportunities that other teachers probably wouldn't have."

Nelson said he plans to mount his band baton on a wall in his home off Old Hutto Road, then kick back and enjoy the coming years.

"I'm going to play a few more rounds of golf a week, work on this house we've recently built and stay active in the music business," he said.

## EDUCATION



— Jeff Thompson

GEORGE NELSON, who worked as a band director and professor in Georgetown from 1954 to 1991, will be inducted into the Texas Bandmasters Hall of Fame in July.

## Retired teacher headed for band hall of fame

By J.B. SMITH

George Nelson started his musical career in third grade, when his parents bought him a cornet from an instrument salesman who breezed through their hometown of Taylor.

In the next six decades, Nelson made his mark on Texas' musical landscape, conducting bands in South Texas, Georgetown High School and Southwestern University.

Now, four years after retiring from Southwestern, the 67-year-old Nelson is looking forward to a little recognition.

In July, the Texas chapter of Phi Beta Mu plans to induct Nelson into the Texas Bandmasters Hall of Fame, ranking him with the state's top 106 band directors from the past half century. He is one of 10 new inductees the music society chose after a three-year search.

"He will join a very elite group, the cream of the cream," said Durward Howard, the Texas Phi Beta Mu executive secretary who sponsored Nelson's nomination. "[Honorees] had to have been recognized by their peers and to have

### EDUCATION SPOTLIGHT

had an outstanding program."

Nelson's talents first won him notice in the late 1930s when he began playing with the Taylor High School band — as a fifth-grader. He played solos with the band and was dubbed the "band baby" by the local newspaper.

"I thought I was the next Harry James," Nelson said this past week. "I thought I was hot stuff on a stick. Then I went in the Army and found there was a lot of talent out there. There were a lot of little George Nelsons running around. It was an educational experience."

Nelson graduated from Taylor High in 1945, went to Southwestern for a year and then went to the Army. He wound up playing in the Eighth Army band in Yokohama, Japan.

He returned to Southwestern after World War II and in 1948 earned his bachelor's degree. He married Frances Deckard and found work as the first band director in the Rio Grande Valley school district of

Edcouch-Elsa. There, he built a program that later was recognized as the best of its size in Texas.

But Williamson County called him home. On the recommendation of Southwestern's fine arts dean, John Richards, Nelson scored a job in 1954 as the sole band director for Georgetown schools.

At the Georgetown High School campus, now Williams Elementary, Nelson spurred on a small high school band to win consistent first division ratings at contests.

Four years later, Nelson got another call from Richards, who was looking for a music director for Southwestern. As much as Nelson liked directing high school band, he couldn't resist the offer of teaching at college — especially a college without a football team.

"Right off the bat, I never did care for marching band," he said. "Most band directors would rather not have to go through all that. I never put down marching to any of my students, though. In my day the marching band justified the band program for the administrators. All they knew of the band was what they saw on the football field."

Although he didn't have to mess with marching drills at SU, he stayed plenty busy, directing jazz and concert bands and teaching conducting, marching band techniques and pedagogy. For about a decade, he taught lessons to brass and woodwind players — even though he couldn't play woodwinds at first.

"I learned a whole lot," he said. "I got to where I could play almost all the woodwinds. All except the flute."

From 1958 to 1991, Nelson trained generations of band directors for the trenches. The ones who stuck with directing still keep in touch with Nelson regularly through conventions and occasional visits, he said.

In his retirement, between golf games and vacations, Nelson still finds time to judge band contests and conduct occasional music clinics.

Although he kept the programs from every concert he ever conducted, he has donated all his memorabilia to the Texas Music Educators Association center in Austin, which houses the Hall of Fame he soon will join.

PROGRAMS

SOUTHWESTERN UNIVERSITY  
JAZZ BAND



Southwestern University  
School of Fine Arts  
Department of Music

presents

STAGE BAND CONCERT

PROGRAM

A Night in Tunisia	arr. Sammy Nestico
Da Ba Dat	Ron Paley
Good News	Sammy Nestico
Jelly Roll	Charles Mingus arr. Sy Johnson
Land of Make Believe	Chuck Mangione arr. Mark Taylor
Power Source	Les Hooper
Residual Fire Dance	Les Hooper
Sarah's Eyes	Steve Smith
Shiny Stockings	arr. Sammy Nestico
Stolen Moments	Oliver Nelson arr. Paul Jennings
Take the 'A' Train	Billy Strayhorn arr. Mark Taylor

March 20, 1991

Alma Thomas Theater

8:00 p.m.

1990 SPRING TOUR

SOUTHWESTERN UNIVERSITY  
STAGE BAND

Dr. George E. Nelson, Conductor

P R O G R A M

All The Things You Are	arr. Mark Taylor
Brass Machine	Mark Taylor
Cafe Amore	arr. Sammy Nestico
Cherokee	arr. Dave Wolpe
Chiapas	Hank Levy
Good News	Sammy Nestico
Gospel John	Jeff Steinburg
Misty	arr. Dave Wolpe
Samba de Haps	Mark Taylor
Spain	arr. Paul Jennings
Watermelon Man	arr. Bob Lowden

PERSONNEL

SAXOPHONE

Kevin Blouin, Tucson, Arizona  
Sarah Espinoza, Cleveland, Ohio  
Brent Seaks, Houston  
David Streitman, Beeville  
Stephanie Swafford, Tomball

TRUMPET

Bill Barton, Silver Spring, Maryland  
Craig Hobbs, Lexington  
Renee Preiss, New Braunfels  
James Smith, Sulphur Springs  
John Whitehurst, Houston

TROMBONE

Brian Lieke, Skidmore  
Darrell Shed, Lexington  
Curtis Trompler, Salado  
Bo Villemain, San Antonio

PIANO

Dahrl Hankins, San Marcos

GUITAR

John Akin, Austin

BASS

Craig Garrett, Houston

DRUMS

Kristin Baker, Georgetown



The Mask and Wig Players,  
The Department of  
Theatre and Speech Communications \*

and  
The School of Fine Arts

Presents

# Man of la Mancha



by  
Dale Wasserman

Music by Mitch Leigh

Lyrics by Joe Darion

#### PRODUCTION STAFF

Director .....	Richard J. Hossalla
Musical Director .....	Gary Warmink
Orchestra Conductor .....	George Nelson
Scene Designer .....	John T. Oertling
Technical Director .....	David Ainsworth
Publicity Director .....	Kathy Truman
Business Manager .....	Carolyn S. Jobe
Costume Designer .....	Colleen Willis •
Lighting Designer .....	David Ainsworth
Property Designer .....	Casey Cowan
Assistant Director / Stage Manager .....	Sheila LeDoux
Rehearsal Pianist .....	Amelia Kirby
Hair Designs .....	David Kirby
Choreographer .....	Judy Thompson
Combat Specialist .....	David Ainsworth

February 18, 19, 20-8:00 p.m.

February 21-2:00 p.m.

No Photographic or recording equipment allowed in auditorium during the performance

MAN OF LA MANCHA will be played without an intermission

## Scenes

THE PLACE: Anatevka, a small village in Russia

THE TIME: 1905, on the eve of the Russian Revolutionary period

### ACT ONE

Prologue: Tradition

Scene 1: Exterior of Tevye's house  
"Act I — Opening"  
"Matchmaker"

Scene 2: Exterior of Tevye's house  
"If I Were a Rich Man"

Scene 3: Interior of Tevye's house  
"Sabbath Prayer"

Scene 4: The Inn  
"To Life"

Scene 5: Street outside the Inn

Scene 6: Outside Tevye's house  
"Tevye's Monologue"  
"Miracle of Miracles"

Scene 7: Tevye's bedroom  
"The Dream"

Scene 8: Village street and Motel's tailor shop

Scene 9: Section of Tevye's yard  
"Sunrise, Sunset"  
"Wedding Dances"

*There will be a fifteen-minute intermission between the acts.*

### ACT TWO

Prologue: Entr'acte

Scene 1: Exterior of Tevye's house  
"Now I Have Everything"  
"Tevye's Rebuttal"  
"Do You Love Me?"

Scene 2: Village Street  
"The Rumor"

Scene 3: Exterior of the railroad station  
"Far From the Home I Love"

Scene 4: Village Street

Scene 5: Motel's Tailor shop

Scene 6: Somewhere on the outskirts of the village

Scene 7: The barn  
"Anatevka"

Scene 8: Outside Tevye's house

Epilogue

# Fiddler on the Roof



starring

## Shelley Berman

Feb. 23-25 8 p.m.

Feb. 26 2 p.m.

Alma Thomas Theatre  
Southwestern University

Mask and Wig Players

present

**YOUR OWN THING**

(suggested by Wm. Shakespeare's TWELFTH NIGHT)

Alma Thomas Theatre

April 27, 28, 29, 1972

Book by Donald Driver

Music & Lyrics by Hal Hester and Danny Apolinar

**T H E C A S T**

Sebastian . . . . .	Ted Giles
Viola . . . . .	Ann Cope
Ship's Purser . . . . .	Royce Gehrels*#
Orson . . . . .	Alva Hascall#
Olivia . . . . .	Lynn Haskins
The Apocalypse . . . . .	Danny . . . . . Tom Swift
	John . . . . . Will Reed
	Michael . . . . . Rex Voland
Nurse . . . . .	Kay Joslin
Stage Manager . . . . .	Royce Gehrels*#

YOUR OWN THING is set on board a sinking ship and several points in Illyria. The action is uninterrupted.

YOUR OWN THING is produced by special arrangement with Tams-Witmark Music Library Inc.

\* Member of the National Collegiate Players

# Winner of the Goosetree-Morgan Award for Best Supporting Actor

**MUSICAL NUMBERS**

Overture  
 "No One's Perfect, Dear"  
 "The Flowers"  
 "I'm Me"  
 "Baby, Baby"  
 "Come Away Death"  
 "Way To The Top"  
 "Well, Let It Be"  
 "She Never Told Her Love"  
 "Be Gentle"  
 "What Do I Know"  
 Reprise: "Baby, Baby"  
 "The Now Generation"  
 "Middle Years"  
 Reprise: "Middle Years"  
 "Young and In Love"  
 "Hunca Munca"  
 "Don't Leave Me"  
 "Your Own Thing"

Orchestra  
 Viola & Sebastian  
 Viola  
 Apocalypse  
 Viola & Apocalypse  
 Sebastian  
 Sebastian  
 Olivia  
 Viola  
 Viola & Orson  
 Viola & Apocalypse  
 Sebastian & Apocalypse  
 Viola & Apocalypse  
 Sebastian  
 Olivia  
 Viola & Orson  
 Company  
 Olivia & Sebastian  
 Apocalypse

**ORCHESTRA**

Woodwind	Edward Aleman, Mike Mitchell
Trumpets	Sem Kegley, Charles Coward
Trombone	Martin Goodman, Roy Bartels
Bass	John Bohmfalk
Guitar	Dan Jones
Organ	Theresa Herzig
Drums	Kerry Ford

**PRODUCTION STAFF**

Director . . . . .	Fred Goodson
Musical Director . . . . .	George Nelson
Assistant Directors . . . . .	Jackie DeHaven
	Gena Doyle*
Technical Director . . . . .	Pam Whitfield*
Light Design . . . . .	Royce Gehrels*#
Choreography . . . . .	Mary Faith Gean*
Program Cover & Poster Design . . . . .	Paul Robinson
Publicity Coordinator & Box Office . . . . .	Mary Elizabeth Fox*
Production Typist . . . . .	Pam Fridrich
Rehearsal Pianist . . . . .	Theresa Herzig

Mask and Wig Players  
present

**ONCE UPON A MATTRESS**

Alma Thomas Theatre April 29, 30, May 1, 1971

Book by Jay Thompson, Marshall Barer  
and Dean Fuller  
Lyrics by Marshall Barer  
Music by Mary Rodgers

**THE CAST**

Minstrel .....	Mike Byrnes
Dancer Prince.....	Tibb Burnett
Dancer Princess.....	Mary Faith Gean*
Princess Number 12.....	Linda Woodruff
Wizard .....	Royce Gehrels*#
Lady Larken.....	Dayle Hilborn*#
Queen Aggravain.....	Cookie Saenz
Prince Dauntless.....	Alva Hascall#
King Sextimus the Silent.....	Tom Swift
Jester.....	Paul Spellman*#
Sir Studley.....	Mike Snowden
Sir Harry.....	Bruce Sterk
Princess Winnifred.....	Patty Rundell*
Emily.....	Pam Fridrich
Lady Mabelle.....	Lynn Haskins

**KNIGHTS AND LADIES**

Mary Faith Gean*	John Reynolds
Pam Fridrich	George Donaldson
Mary Lou Appel	David Flinn
Kay Joslin	Peter Beck
Mary Medley	Mike Snowden
Lynn Haskins	Clyde Shaw
Gail Stutts	Mark Dawson
Linda Woodruff	Bobby Young
Karen Lyman	
Barbara Turner	

**COURT DANCERS**

Mary Faith Gean*	Mike Snowden
Pam Fridrich	Clyde Shaw
Kay Joslin	Mark Dawson
Mary Medley	David Flinn
Gail Stutts	George Donaldson
Barbara Turner	Peter Beck
Lynn Haskins	

\*Member of National Collegiate Players

#Winner of the Goosetree-Morgan Award for Best Supporting Roles

ONCE UPON A MATTRESS is produced by special arrangement with Music Theatre International, Inc.

SPECIAL THANKS TO: Mr. and Mrs. Dwight Hilborn

Mrs. I. T. Raper

**SYNOPSIS OF SCENES**

Prologue

**ACT I:**

Scene 1	The Great Hall
Scene 2	A Castle Corridor
Scene 3	The Courtyard
Scene 4	A Castle Corridor
Scene 5	Winnifred's Dressing Room
Scene 6	Another Castle Corridor
Scene 7	The Courtyard
Scene 8	Another Castle Corridor
Scene 9	The Great Hall

**ACT II:**

Scene 1	The Castle
Scene 2	Winnifred's Room
Scene 3	Still Another Castle Corridor
Scene 4	The Wizard's Chamber
Scene 5	Yet Another Castle Corridor
Scene 6	A Very Dark Castle Corridor
Scene 7	The Bedchamber
Scene 8	A Castle Corridor
Scene 9	The Banquet Hall

There will be a ten-minute intermission between acts.

**MUSICAL NUMBERS**

Prologue: "Many Moons Ago" Minstrel

**ACT I:**

1. "Opening For A Princess"	Dauntless, Company
2. "In A Little While"	Harry, Larken
3. Reprise: "In A Little While"	Harry, Larken
4. "Shy"	Winnifred, Knights
5. "The Minstrel, The Jester and I"	Minstrel, Jester, King
6. "Sensitivity"	Queen, Wizard
7. "The Swamps Of Home"	Winnifred, Dauntless, Ladies
8. "Normandy"	Minstrel, Jester, Larken
9. "Spanish Panic"	Queen, Company
10. "Song Of Love"	Dauntless, Winnifred, Company

**ACT II:**

1. "Quiet"	Queen, Company
2. "Happily Ever After"	Winnifred
3. "Man-To-Man Talk"	King, Dauntless
4. "Very Soft Shoes"	Jester, Knights
5. "Yesterday I Loved You"	Harry, Larken
6. Finale	Company

**ORCHESTRA**

Flute	Robin Noe
Clarinet	Gordon Bade, Marsha Krause
Bass Clarinet	Rick Robinson
Bassoon	Ann Haahn, Mike Mitchell
Horn	Roy Bartels
Trumpet	Don Grissom, Sem Kegley
Trombone	Martin Goodman, Stanley Beard
Bass	Jerry Purvis
Percussion	Kerry Ford, John Harrison
Pianist	Theresa Herzig

1989 SPRING TOUR

SOUTHWESTERN UNIVERSITY  
STAGE BAND

Dr. George E. Nelson, Conductor

PROGRAM

Birdland	Larry Kerchner
C.B. Express	Sammy Nestico
Da Ba Dat	Ron Paley
For Once In My Life	Darrell Holt
Fly Me To The Moon	John LaBarbera
How High The Moon	Sammy Nestico
Kansas City Strut	Billy Byers
Meltdown	Mark Taylor
Rabble Rouser	Lennie Niehaus
Someone To Watch Over Me	Mark Taylor
Stick With It	Mark Taylor
Summer Samba	Mark Taylor
Sunshine South	Paul Clark
Tuxedo Junction	Jerry Nowak

PERSONNEL

SAXOPHONE

Sarah Espinoza, Cleveland, Ohio  
Jana Cook, Vernon  
Steve Hardi, Farmers Branch  
Sharon Lundgren, Wiesbaden, Germany  
Andrew Mullinax, The Woodlands  
David Streitman, Beeville

TRUMPET

Bill Barton, Silver Springs, Maryland  
Kat Callaway, McAllen  
Donna Hastings, Lubbock  
Renee Preiss, New Braunfels  
John Whitehurst, Houston

TROMBONE

Craig Garrett, Houston  
Brian Leike, Skidmore  
Darrell Shed, Lexington  
Bo Villemain, San Antonio

PIANO/VOCALIST

Stacey Sims, Georgetown

BASS

Andy Brandenberger, Mason

GUITAR

David Brehm, San Antonio

DRUMS

Kristin Baker, Georgetown



The Southwestern University  
Stage Band  
1987 Spring Tour

Dr. George E. Nelson, Conductor

**Program**

Almost Like Being In Love	Lennie Niehaus
Anything Goes	Les Hooper
Broken Promise	Paul Clark
Come In From The Rain	Jerry Nowak
Engine No. 9	Les Hooper
Free Fall	Harry Stone
Here's That Rainy Day	Bob Lowden
In The Mood	Joe Garland
Land Of Make Believe	Mark Taylor
Log Rhythm	Les Hooper
Maiden Voyage	Mark Taylor
Tall Cotton	Sammy Nestico
Torock	Steve Wright
Tuxedo Junction	Jerry Nowak

**Personnel**

**Sax**

David Streitman, Beeville  
Sarah Espinoza, Austin  
Steve Hardie, Farmers Branch  
Jana Cook, Vernon  
Sharon Lundgren, Wiesbaden, Ger.

**Trombone**

Bo Villemain, San Antonio  
Peggy Hailey, Kenedy  
Brian Leike, Skidmore  
Whitney Anderson, San Antonio

**Bass**

Wayne McLemore, Arlington

**Guitar**

Gerald Cantor, Miami, Florida

**Drums**

Kristin Baker, Georgetown

**Trumpet**

Kat Callaway, McAllen  
Rock Brown, Georgetown  
John Whitehurst, Houston  
Donna Hastings, Lubbock

**Piano/Vocalist**

Stacey Sims, Georgetown





# Southwestern University

## School of Fine Arts

Department of Music

presents  
the

STAGE BAND

George E. Nelson, Conductor

1984

### PROGRAM

Engine No. 9 . . . . .	Les Hooper
Fast Forward . . . . .	Les Hooper
Fly By Night . . . . .	arr. John LaBarbera
Free Fall . . . . .	Harry Stone
Hidden Dimple . . . . .	Steve Wright
I'll Never Love This Way Again (Vocal) . . . . .	arr. Darrell Holt
Look For the Silver Lining (Vocal) . . . . .	arr. Al Cobine
Residual Fire Dance . . . . .	Les Hooper
Satin Doll . . . . .	arr. Sammy Nestico
The Suncatchers . . . . .	Marius Nordal
Sunshine South . . . . .	Paul Clark
Tall Cotton . . . . .	Sammy Nestico
Watch What Happens (Vocal) . . . . .	arr. Al Cobine



**1978**

**PERSONNEL**

**Saxes**

Jeff Peters, Round Rock  
 Brenda Morris, Pasadena  
 Brian Todd, Georgetown  
 Linda Cavness, Austin  
 Rick Schroff, Richardson

**Trombones**

Mark Piwetz, Houston  
 Jack Green, Houston  
 Robert Negrin, Houston  
 Aaron Lewis, Georgetown  
 Steve Smith, College Station

**Trumpets**

Lance Renfrew, Marble Falls  
 David Trawick, San Antonio  
 Lorena Stancil, College Station  
 Lisa Canady, Liberty Hill

**Rhythm**

Kenneth Browne, San Antonio  
 Phil Bullard, Bellaire  
 Tad Frysinger, Wimberly  
 Chris Mathers, Houston  
 Tim Scholl, Tomball

**Vocalist**

Stephanie Dory, Houston

**THE BAND**

The Southwestern University Stage Band performs frequently both on the University campus and throughout the state. Students in the instrumental program at Southwestern have additional performance opportunities in brass and woodwind ensembles, the pep band, the Sinfonietta, the symphonic band, and in musicales and opera scenes produced jointly by the art, music, and theatre departments of the School of Fine Arts.

**PROGRAM**

Broken Promise .....	Clark
Chief's Blues .....	Shanklin
First Class .....	Lowden
The Fly .....	Chattaway
For Once In My Life I Got Love .....	Holt
Gonna Fly Now .....	Chattaway
Granada Smoothie .....	Taylor
It's Alright With Me .....	Kerr
Ladera Park .....	Leech
One Less Bell .....	Holt
Yes Sir, That's My Baby .....	DeCamp
Who's Sorry Now .....	Nestico

**THE CONDUCTOR**

Dr. George E. Nelson, conductor of the Stage Band, is Professor and Coordinator of Instrumental Music Education, Brass and Percussion Instruments. A graduate of Southwestern University with the Bachelor of Music degree, he also holds the Master of Music degree and the Doctor of Musical Arts in Music Education from The University of Texas at Austin. In addition, he has done graduate work at Eastman School of Music and at the University of Colorado. He has taught and directed at Southwestern University since 1958 and has played an important role in establishing the superior reputation held by Southwestern's music department.

1980

## Program

As Special As You . . . . . Gordon Goodwin  
 Blue Orleans . . . . . Les Hooper  
 Broken Promise . . . . . Paul Clark  
 Cheers . . . . . Henry Mancini  
 Fast Forward . . . . . Les Hooper  
 Get It Together . . . . . Jeff Steinberg  
 In the Mood . . . . . Garland  
 Jesus Christ Superstar . . . . . arr. Al Capps  
 Look For the Silver Lining . . . . . arr. Sammy Nestico  
 No More Blues . . . . . A. Carlos Jobim  
 No Parking . . . . . Lance Strickland  
 Sir Gawain & the Green Knight . . . . . Lyle Mays  
 Three on a Tree . . . . . Charles Gray  
 Torock . . . . . Steve Wright

## Personnel

### Sax

Jeff Peters, Round Rock  
 Shelley Pate, Bridge City  
 Paul Barton, Dallas  
 Martha Isbell, Leander  
 Linda Burk, Temple

### Trumpet

Mike Pence, Round Rock  
 Robert Wilmot, Corpus Christi  
 David Demers, Round Rock  
 Glen Patrick, Lindale

### Drums

Phil Bullard, Bellaire

### Trombone

Tracee Haynes, Roscoe  
 John David Janda, Bellville  
 Steve Smith, Austin  
 Brian Woywood, Austin

### Piano

Pat Vidaurri, San Antonio

### Bass

Candy Huff, Austin

### Guitar

Chris Mathers, Houston

The Southwestern University Stage Band performs frequently both on the University campus and throughout the state. Students in the instrumental program at Southwestern have additional performance opportunities in brass and woodwind ensembles, the pep band, the Sinfonietta, the symphonic band, and in musicales and opera scenes produced jointly by the art, music, and theatre departments of the School of Fine Arts.



SOUTHWESTERN UNIVERSITY BAND, 1975-76





S.U. JAZZ , 1979 - 80



S.U. CONCERT BAND, 1979-80

PROGRAMS

SOUTHWESTERN UNIVERSITY  
MUSICALS

## PRODUCTION STAFF

Director ..... Richard J. Hossalla  
 Vocal Director / Accompanist ..... Jim Fritzler  
 Orchestra Conductor ..... George Nelson  
 Choreographer ..... Judy Thompson  
 Scenic Designer ..... Stephen Wolf  
 Costume Designer ..... Jamelle Flowers  
 Lighting Designer ..... Robin Schraft  
 Stage Manager ..... Melissa Miller \*§  
 Assistant Lighting Designers ..... Brenda Gray§, Don Stricklin §  
 Assistant Stage Managers ..... Michael Sullivan\*‡, James Venhaus \*‡  
 Technical Assistants ..... Nicole Rae Cowan\*§, Melissa Miller\*§,  
 Don Stricklin§, Brenda Gray §  
 Costume Crew Chiefs ..... Stacie Donnelly‡£, Brigid E. Malek\*§,  
 Missy DeLay, Scott N. Cox \*  
 Props Coordinator ..... Robert A. Linhart \*  
 Assistant Props Coordinator ..... Dorothy Caldwell  
 Sound Coordinator ..... James Venhaus  
 Wardrobe ..... Tammi Treuhardt §  
 Master Electrician ..... Roy Trejo \*  
 Light Board Operators ..... Wendy Streza, Leah Quin,  
 Cassandra Parker, Stephanie Watson  
 Follow Spot Operators ..... Jonathan Polle‡, Mark Thompson  
 Sound Operator ..... Mike Gardner  
 Stage Crew ..... Sassy Sarikhanian, Dee Dee Thomas,  
 Robin Kelsey Weinbursh, Teresa Kean  
 Dance Captains ..... Scott N. Cox\*, Ginger Gaines, Cindy Creekmore £  
 Hair and Wigs ..... Donna O'Klock  
 Dialect Coach ..... Kathleen Juhl

## ORCHESTRA

Violin: Mary Huber, Mia Fairchild, Timothy Hsieh, Rebecca Dotts; Viola: Lea Graham;  
 Cello: Barry Sills; Flute: Melanie Hotchkiss; Oboe: Lana Neal; Clarinet/Tenor: John  
 Wilson; Clarinet: Michael Hurtado; Alto Sax: Stephanie Swafford; Bass Clarinet: Heather  
 Carter; Trumpet: Glenda Smith, Leslie Williams; French Horn: Alasha Klawitter;  
 Trombone: Raimund McClain, Curtis Trompler; Bass: Craig Garrett; Traps: Kristin Baker;  
 Percussion: Julie Horton

## PRODUCTION CREWS

**SET CREW:** John Akin, Dorothy Caldwell, Mark Carrillo, Marissa Castañón, Nicole Rae  
 Cowan\*§, Lara Fry, Jennifer Griffin, Thomas Kirkpatrick, Cassandra Parker, Jonathan  
 Polle‡, Jason Phillips, Michael Stovall, Don Stricklin§, Michael Sullivan\*‡, Scott Thomas,  
 Roy Trejo\*.

**COSTUME CREW:** Amy Blake\*, Missy DeLay, Brenda Gray§, Darien Kubik, Lynne  
 McCreary\*, Melissa Miller\*§, Tammi Treuhardt§, James Venhaus\*‡.

**LIGHTING CREW:** Jennifer Griffin, Amy Blake\*, Cassandra Parker

## ACKNOWLEDGEMENTS

Williamson County Sun	Georgetown Weekly
Pat Kucler	Dan Yoxall
LaMarriol Smith	Doris Proctor
Kathy Ramsey	Tom Jones
"Poke" Hood	Nell Benold
Rebecca & Dean Ledbetter	Whitfield Photography
The Wonderful Staff of the Physical Plant	

# Southwestern University

AT GEORGETOWN, TEXAS



SHANI WALLIS

**GYPSEY**  
a musical fable

February 14 - 17, 1991

## MUSICAL NUMBERS

### ACT I

<i>Prologue</i> .....	George Nelson & The San Gabriel River Band
<i>20 Fans</i> .....	George Nelson, The Girls, the Cowboys, Farmer, Shy Kid, Miss Wulla Jean, Traveling Salesman, and Slick Dude
<i>A Lil' Ole Bitty Pissant Country Place</i> .....	Mona and The Girls
<i>Girl You're a Woman</i> .....	Mona, Shy, Jewel and The Girls
<i>Watch Dog Theme</i> .....	The Dogettes
<i>Texas Has A Whorehouse In It</i> .....	Melvin P. Thorpe, the Melvin P. Thorpe Singers & Dogettes
<i>Twenty-four Hours of Lovin'</i> .....	Jewel, The Girls
<i>Reprise: Watchdog Theme</i> .....	Dogettes
<i>Reprise: Texas Has A Whorehouse In It</i> .....	Melvin P. Thorpe, Dogettes
<i>Doatsey Mae</i> .....	Doatsey Mae
<i>Angelette March</i> .....	Imogene Charlene and The Angelettes
<i>The Aggie Song</i> .....	The Aggies

— Fifteen Minute Intermission —

### ACT II

<i>The Sidestep</i> .....	The Governor, Governor's Aide, Senator Wingwoah, The Reporter, Melvin P. Thorpe, Dogettes, Melvin P. Thorpe Singers
<i>No Lies</i> .....	Mona, Jewel, The Girls
<i>Good Old Girl</i> .....	The Sheriff, The Townies
<i>Hard Candy Christmas</i> .....	Amber, Linda Lou, Ginger, Dawn, Ruby Rae, Beatrice
<i>Reprise: Hard Candy Christmas</i> .....	The Girls
<i>Bus From Amarillo</i> .....	Mona
<i>Finale</i> .....	The Company

### ACKNOWLEDGEMENTS

Williamson County Sun	Dan Yoxall
Pat Kucler	Texas Sampler
Kathy Anthony	Doris Hossalla
Georgetown Weekly	St. Phillips Methodist Church
Marilyn Hampton	Pi Kappa Alpha
and Georgettes	SU Police Department
Paul Upthegrove	James Trefftz

*The use of photographic or recording equipment is prohibited.  
Beverages are not allowed in the auditorium.*

# Southwestern University

presents



Book by Larry L. King & Peter Masterson  
Music and Lyrics by Carol Hall

February 15 — 17, 1990  
February 18, 1990

8:00 P.M.  
2:00 P.M.



## MUSICAL NUMBERS

### ACT I

- 5:00 p.m. **The Street**  
*The Prologue* . . . . . The Jets and Sharks  
*Jet Song* . . . . . Riff and the Jets
- 5:30 p.m. **An Alley**  
*Something's Coming* . . . . . Tony
- 6:00 p.m. **The Bridal Shop**
- 10:00 p.m. **The Gym**  
*The Dance at the Gym* . . . . . The Company  
*Maria* . . . . . Tony
- 11:00 p.m. **Another Alley**  
*Tonight* . . . . . Tony and Maria  
*America* . . . . . Anita, Rosalia and the Shark Girls
- Midnight **Doc's Drug Store**  
*Cool* . . . . . Riff, the Jets and the Jet Girls
- The Next Day**  
 5:30 p.m. **The Bridal Shop**  
*One Hand, One Heart* . . . . . Tony and Maria
- 6:00 to 9:00 p.m. **The Neighborhood**  
*Tonight—Reprise* . . . . . Jets, Sharks, Anita, Tony and Maria
- 9:00 p.m. **Under the Highway**  
*The Rumble* . . . . . Riff, Bernardo and the Gangs

— Fifteen Minute Intermission —

### ACT II

- 9:15 p.m. **Maria's Bedroom**  
*I Feel Pretty* . . . . . Maria, Rosalia, Consuela, Francisca  
*Somewhere* . . . . . Tony, Maria, Velma and the Company
- 10:00 p.m. **Another Alley**  
*Gee, Officer Krupke* . . . . . A-Rab and the Jets
- 11:30 p.m. **Maria's Apartment**  
*A Boy Like That — I Had A Love* . . . . . Anita and Maria
- 11:40 p.m. **Doc's Drug Store**  
*The Taunting* . . . . . Anita and the Jets
- Midnight **The Street**
- Finale** . . . . . The Company

## ACKNOWLEDGEMENTS

Wendy Straza	Ted Lucas	Weddings Etc.
Kenny Sheppard	Doris Proctor	Carmen Keltner
Dan Yoxall	Tommy Miles	Susan Karas
Handcrafts Unlimited	Gold's Department Store	Mrs. Stella Olivieri
Ruth Davis	Doris Hossalla	Vera Schraft

‡ Denotes Goostree-Morgan Springer Award Recipients

† Denotes Angus Award Recipients

§ Denotes Technical Award Recipients

\* Denotes Membership in Alpha Psi Omega Theatre Honorary

# Southwestern University



**Book by Arthur Laurents**  
**Music by Leonard Bernstein**  
**Lyrics by Stephen Sondheim**

**February 16 - 18 8:00 P.M.**  
**February 19 2:00 P.M.**

Time: 780 A.D. and thereabouts  
Place: The Holy Roman Empire and thereabouts

There will be one fifteen-minute intermission

### Musical Numbers

Scene 1: THE OPENING "Magic to Do" "Corner of the Sky"	The Players Pippin
Scene 2: HOME "Welcome Home"	Charles and Pippin
Scene 3: WAR "War is a Science" "Glory"	Charles and Pippin Leading Player
Scene 4: THE FLESH "Simple Joys" "No Time at All" "With You"	Leading Player Berthe and The Boys Pippin and Players
Scene 5: REVOLUTION "Spread a Little Sunshine" "Morning Glow"	Fastrada Pippin
Scene 6: ENCOURAGEMENT "On the Right Track"	Leading Player & Pippin
Scene 7: THE HEARTHE "Kind of Woman" "Extraordinary" "Love Song"	Catherine and The Girls Pippin Pippin and Catherine
Scene 8: THE FINALE	The Players

### Production Crew

#### SET CREW

Lance Ball ‡  
Rhonda Bigham  
Kimberly W. Breckon †  
Brenda Burton  
Leigh Ann Clemons §\*  
Mary Catherine Coates  
Heather DeVries  
Christie Flynn  
Rachel Foote  
Eric Hanson  
Scott Hanson  
Lisa Catherine Johnson †  
Melinda Lee §  
Laura Ludwig  
Brigid Malek  
Pat Martin  
Melissa Miller  
John Seymour \*  
Mike Sullivan  
Roy Trejo

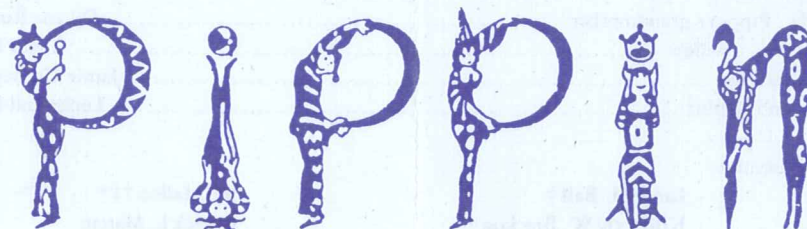
#### COSTUME CREW

Erin Allen  
Julie Brister †‡\*  
Carla J. Crowe †\*  
Jolene Ferguson  
Courtney Wyn Franks  
Mike Halden †‡\*  
Lynne McCreary  
Jeff Mallon †‡\*  
Cheryl Morris  
Tracy Reese \*  
Kristal Reid  
Tracy Traver  
Kristy Woods

# Southwestern University

★ AT GEORGETOWN, TEXAS ★

A Musical Comedy by  
**ROGER O. HIRSON**



Music & Lyrics by  
**STEPHEN SCHWARTZ**

February 11 - 13 8:00 p.m.  
February 14 2:00

ACT ONE

- Overture  
Scene 1: The exterior of the World Wide Wicket Co.  
"How To"  
Scene 2: The corridor of the World Wide Wicket Co.  
"Happy To Keep His Dinner Warm"  
Scene 3: The outer office of the World Wide Wicket Co.  
"Coffee Break"  
Scene 4: The mail room  
"The Company Way"  
Scene 5: J.B. Biggley's office  
Scene 6: The corridor of the World Wide Wicket Co.  
"A Secretary is Not a Toy"  
Scene 7: The elevator landing  
"Been A Long Day"  
Scene 8: The outer office  
"Old Ivy"  
Scene 9: Finch's first office  
Scene 10: The plans and systems office  
Scene 11: A corridor somewhere in the World Wide Wicket Co.  
"Paris Original"  
Scene 12: The roof  
Scene 13: The elevator landing  
Scene 14: J.B. Biggley's office  
"Rosemary"

THERE WILL BE A FIFTEEN-MINUTE INTERMISSION  
BETWEEN ACTS.

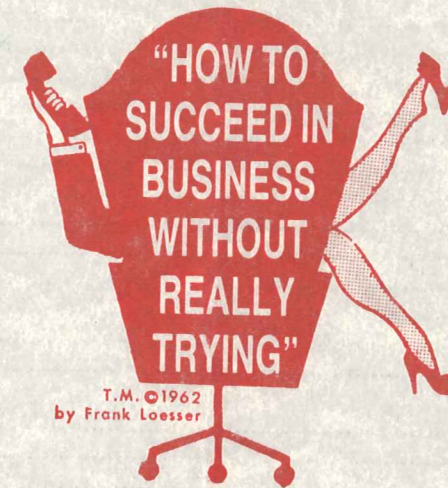
ACT TWO

- Entr'acte  
Scene 1: The outer office  
"Cinderella, Darling"  
Scene 2: Finch's new advertising office  
"Happy To Keep His Dinner Warm"-Reprise  
Scene 3: J.B. Biggley's office  
"Heart Gold"  
Scene 4: Men's washroom of the World Wide Wicket Co.  
"Gotta Stop That Man"  
Scene 5: The boardroom  
Scene 6: The television room  
"The Yo Ho Ho"  
Scene 7: The wrecked outer office  
"I Believe In You"-Reprise  
Scene 8: The elevator landing  
Scene 9: The boardroom  
"Brotherhood of Man"  
Scene 10: The outer office  
Finale "Company Way"

# Southwestern University

AT GEORGETOWN, TEXAS

Pulitzer Prize - Winning Musical Hit



February 12-14 8 p.m.

February 15 2 p.m.

Alma Thomas Fine Arts Center  
Southwestern University

*ACT ONE*

Overture

Scene 1: Deck of the S.S. America  
"Bon Voyage"  
"You're the Top"  
"Bon Voyage"

Scene 2: On the ship's deck, night.  
"It's Delovely"

Scene 3: Two cabins on the "A" Deck.

Scene 4: The ship's deck  
"Heaven Hop"

Scene 5: The ship's deck  
"Friendship"

Scene 6: Evelyn's stateroom

Scene 7: The afterdeck  
"I Get a Kick Out of You"

Scene 8: The ship's deck  
"Anything Goes"

THERE WILL BE A FIFTEEN-MINUTE INTERMISSION  
BETWEEN ACTS.

*ACT TWO*

Entr'acte

Scene 1: The ship's lounge  
"Public Enemy Number One"  
"Let's Step Out"  
"Let's Misbehave"  
"Blow Gabriel Blow"

Scene 2: The brig  
"All Through the Night"  
"Be Like The Bluebird"  
"All Through the Night" - Reprise

Scene 3: Deck of the S.S. America  
"Take Me Back To Manhattan"  
Finale "You're the Top"

# Southwestern University

★ AT GEORGETOWN, TEXAS ★



February 13-15 8 p.m.

February 16 2 p.m.

Alma Thomas Fine Arts Center  
Southwestern University

ACT ONE

Overture

Prologue: "Many Moons Ago"

Scene 1: A throne room in a medieval castle, late March  
"Opening for A Princess"  
"In A Little While"

Scene 2: A castle corridor, the same day  
"In A Little While" - Reprise

Scene 3: The castle courtyard, a mid-April morning three weeks later  
"Shy"  
"The Minstrel, The Jester And I"

Scene 4: A castle corridor, later that day  
"Sensitivity"

Scene 5: Winnifred's dressing room later that day  
"The Swamps Of Home"

Scene 6: A castle corridor, later that day

Scene 7: Tents in a courtyard, late evening the same day  
"Normandy"

Scene 8: A castle corridor, a few minutes later

Scene 9: The Great Hall, immediately following  
"Spanish Panic"  
"Song of Love"

*There will be a fifteen-minute intermission between acts.*

ACT TWO

Entr'acte

Scene 1: The castle, same day, that night  
"Opening"

Scene 2: A room in the castle, later that night  
"Happily Ever After"

Scene 3: A castle corridor, later that night  
"Man To Man Talk"

Scene 4: The Wizard's chamber, later that night

Scene 5: A castle corridor, later that night  
"Very Soft Shoes"

Scene 6: The same corridor, a few minutes later  
"Yesterday I Loved You"

Scene 7: Winnifred's bedchamber, later that night  
"Nightingale Lullaby"

Scene 8: The Castle courtyard, the next morning

Scene 9: The Castle courtyard  
"Finale"

# Southwestern University

★ AT GEORGETOWN, TEXAS ★



February 14-16 8 p.m.

February 17 2 p.m.

Alma Thomas Theatre  
Southwestern University

Department of Theatre

# School of Fine Arts Southwestern University

Department of Music

MASK AND WIG PLAYERS

present

## DAMES AT SEA

Book and Lyrics by  
George Haimsohn and Robin Miller

Music by Jim Wise

Orchestrations by Ric Robinson

Alma Thomas Theatre

November 30, December 1, 2, 1972  
8:00 p.m.

### THE CAST

Mona Kent  
Joan  
Hennesey  
Ruby  
Dick  
Lucky  
The Captain  
Dames At Sea Chorus

Cookie Saenz\*#  
Ann Cope  
Scott Pollard  
Ann Thomas  
Ted Giles  
Alva Hascall \*#  
Scott Pollard  
Paul Bailey,  
Pam Fridrich #, Rene Harris,  
Paul Robinson, Dee Spears,  
Rex Voland

Time: The Early Thirties

Act One  
Any 42nd Street theatre  
Act Two  
On the battleship

\* Winner of Goosetree-Morgan Award  
# Member of National Collegiate Players

Dames At Sea is produced by special arrangements with Samuel French Inc.

### MUSICAL NUMBERS

#### Act One

Wall Street  
It's You  
Broadway Baby  
That Mister Man of Mine  
Choo-Choo Honeymoon  
The Sailor of My Dreams  
Singapore Sue  
Good Times are Here to Stay

Mona  
Dick and Ruby  
Dick  
Mona and Company  
Joan and Lucky  
Ruby  
Lucky and Company  
Joan, Company

#### Act Two

Dames at Sea  
The Beguine  
Raining in My Heart  
There's Something About You  
Raining in My Heart (Reprise)  
The Echo Waltz  
Star Tar  
Let's Have a Simple Wedding

Company  
Mona and Captain  
Ruby and Company  
Dick and Ruby  
Ruby  
Mona, Joan, Ruby and Company  
Ruby and Company  
Company

The Mask and Wig Players  
The School of Fine Arts  
The Department of Theatre and Speech Communication  
in cooperation with The Department of Music  
Present

## "A FUNNY THING

HAPPENED ON THE  
WAY TO THE FORUM"

<sup>BY</sup>  
BURT SHEVELOVE-LARRY GELBART  
<sup>WITH</sup>  
STEPHEN SONDHEIM

Prologus, an actor .....	Sam Smith
Senex, an old man .....	Paul Swift
Domina, his wife .....	Paige McDaniel +•
Hero, his son, in love with Philia .....	Darcy McFadden
Hysterium, slave to Senex and Domina .....	John Rienthaler
Pseuddolus, slave to Hero .....	Sam Smith
Erronius, an old man .....	Ken Lieck
Miles Gloriosus, a warrior .....	Larry Ruffo
Lycus, a buyer and seller of courtesans .....	Nick Phillips +
Tintinabula, a courtesan .....	Susan Slagle ‡
Panacea, a courtesan .....	Cheryl White +•
The Geminae, courtesans .....	Carson Childress Candy Baimbridge
Vibrata, a courtesan .....	Suzanne Rogers
Gymnasia, a courtesan .....	Yvonne Vargas
Philia, a virgin .....	Virginia Hardy
The Proteans .....	Russell Faulkner David Inman + Hans Veneble

The time is two hundred years before the Christian era, a day in spring.

The place is a street in Rome in front of the houses of Erronius, Senex, and Lycus.

The action is continuous, with a single fifteen minute intermission.

### ORCHESTRA

Woodwinds: Julie Meyer (flute), Renee Kemper (clarinet), Julia Clark (clarinet), Pat Vidaurri (bass clarinet), Paul Barton (flute/clarinet)  
Brass: Kim Dowd, Kevin Warburton, David Marks, Jim Giroux (trombone), Chris Immel (bass), Sara Ludwig, Ron Green (percussion)

### MUSICAL NUMBERS

#### Act I

Overture .....	Orchestra
"Comedy Tonight" .....	Company
"Love I Hear" .....	Hero
"Free" .....	Pseudolus, Hero
"The House of Marcus Lycus" .....	Lycus
"Lovely" .....	Philia, Hero
"Pretty Little Picture" .....	Pseudolus, Philia, Hero
"Everybody Ought to Have a Maid" .....	Senex, Pseudolus, Hysterium, Lycus
"I'm Calm" .....	Hysterium
"Impossible" .....	Senex, Hero
"Bring Me My Bride" .....	Miles and Company

#### Intermission

#### ACT II

"That Dirty Old Man" .....	Domina
"That'll Show Him" .....	Philia
"Lovely" Reprise .....	Pseudolus, Hysterium
"Funeral" .....	Miles and Company
"Comedy Tonight" Finale .....	Company

### PRODUCTION STAFF

Director .....	John T. Oertling
Musical Director .....	Gary Warmink
Orchestra Conductor .....	George Nelson
Choreographer .....	Judy Thompson
Lighting Design .....	Casey Cowan
Costume Design .....	John T. Oertling
Set Design .....	John T. Oertling
Technical Director .....	Jeff Osborn
Technical Assistants .....	David Inman • John Luce
Publicity Directors .....	Paige McDaniel +• Susan Greenlaw
Costume Mistress .....	Colleen Willis ‡
Stage Manager/Assistant Director .....	Susan Greenlaw
Accompanist .....	Debra Ray
Department Chairman .....	Richard J. Hossalla
Brochure and Poster Design .....	Allison Ader
Follow Spot Operators .....	Martha Byran Colleen Burke

CLINICIAN-CONDUCTOR

ALL DISTRICT/REGION  
BANDS



PROGRAM 1987

TO BE SELECTED FROM  
THE FOLLOWING REPERTOIRE:

A-AA-AAA DISTRICT HONOR BAND

Star Spangled Banner.....Sousa/Damrosch  
Tambourin.....Gretry/Gardner  
In a Day or Two.....Mitchell  
Cheerio March.....Goldman/Erickson  
Yorkshire Ballad.....Barnes  
Thematic Variations on Dona Nobis Pacem.....Sudduth  
El Capitan.....Sousa

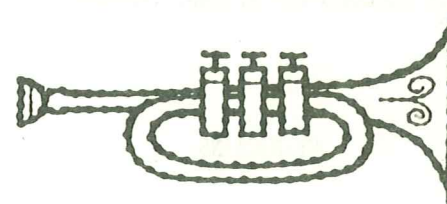
AAAA DISTRICT HONOR BAND

British Eighth March.....Elliott  
Hooray For Hollywood.....Arr. Barker  
March and Procession of Bacchus.....Delibes/Osterling  
Salvation is Created.....Tschesnokoff/Houseknecht  
Awake! Chorale from Act III, Die Meistersinger.Wagner/Houseknecht

AAAAA DISTRICT HONOR BAND

Pas Redoublé.....Saint-Saëns  
Béatrice and Bénédict.....Berlioz/Henning  
Jalousie.....Arr. Krance  
Cole Porter.....Arr. Robinson  
Folk Dances.....Shostakovich/Reynolds  
Second Suite in F.....Holst  
Symphony No.I for Winds and Percussion.....Buckvich  
Beguine for Band.....Osser

# THE ALL-DISTRICT BANDS IN CONCERT



Presented by  
Band Division, District XI  
Texas Music Educators Association

Tom C. Clark High School Auditorium  
San Antonio, Texas

January 17, 1987

TEXAS  
MUSIC EDUCATORS ASSOCIATION

DISTRICT OFFICERS

REGION CHAIRMAN-REY MEZA.....JOHN MARSHALL HIGH SCHOOL  
REGION VICE CHAIRMAN-CAROLYN MARSHALL.....OLIVER WENDELL HOLMES HIGH SCHOOL  
U.I.L. EXECUTIVE SECRETARY-TOME WALTERS.....BANDERA HIGH SCHOOL  
SECRETARY/TREASURER-IRMA TAUTE.....JOHN JAY HIGH SCHOOL  
BAND DIVISION CHAIRMAN-BEN CHASAN.....WILLIAM HOWARD TAFT HIGH SCHOOL  
JR. HIGH BAND DIVISION CHAIRMAN-DAN ALEMAN...PEARSALL HIGH SCHOOL

CLINICIANS

3A-2A-1A BAND: GEORGE NELSON.....SOUTHWESTERN UNIVERSITY  
4A BAND: ALLEN CLARK.....BROWNSVILLE PORTER HIGH SCHOOL  
5A BAND: J.R. McENTYRE.....DIRECTOR OF MUSIC EDUCATION,  
ODESSA, TX

ORGANIZERS

3A-2A-1A BAND: PATRICIA VIDAURRI.....SUL ROSS MIDDLE SCHOOL  
4A BAND: DANNY SOLIS.....WEST CAMPUS HIGH SCHOOL  
5A BAND: FRANK HOREJSI.....WILLIAM HOWARD TAFT HIGH SCHOOL

CONCERT HOSTS

GARY ROSENBLATT AND FRED OLDENCOTT.....TOM C. CLARK HIGH SCHOOL

PICCOLO

Heather Wiedebusch, LBJ

FLUTES

Dellanira Sanchez, Asherton  
Melanie Hothckiss, Pearsall  
Virginia Menchaca, Crystal City  
Denise Watson, Pearsall  
Myra Vela, Cotulla  
Rebecca Ortegon, Pearsall  
Selene Segovia, Pearsall  
Patty Holster, Comfort  
Aimee Hollembeak, Natalia  
Cindy Martinez, Rock Springs

CLARINETS

Jenny Dooley, Devine  
Mary Salazar, Pearsall  
Monica Flores, Pearsall  
Sonia Rivera, Crystal City  
Vickie Nieto, Pearsall  
Becky Enriquez, Pearsall  
Irene Vela, Cotulla  
Norma Flores, Crystal City  
Sonia Mainez, Pearsall  
Brenda Hill, Cotulla  
Ursula Jarussi, Pearsall  
Janet Bushman, Medina Valley  
Cynthia Rodriguez, Cotulla  
Christine Rodriguez, Hondo  
Lara Pearson, Comfort  
Celeste Wright, Medina Valley  
Nancy Hernandez, Medina Valley  
Mary Audrey Gonzales, Pearsall

BASS CLARINET

Sharon Lawson, Devine

ALTO SAX

Elizabeth Sanchez, Crystal City  
Jan Kummerow, Ingram  
Jake Frazier, Bandera  
John Paul Guerra, Pearsall

TENOR SAX

Alfredo Segura, Cotulla  
Clem Hernandez, Pearsall

BARI SAX

Armando Gallegos

PERCUSSION I

Michael Vela, Cotulla  
Rance Kampert, Medina Valley  
Becky Flores, Crystal City

TYMPANI

Tommy Martinez, Pearsall

TRUMPET

Patty Casillas, Crystal City  
Pete Rivera, Crystal City  
Onesimo Flores, Asherton  
Susie Aelvoet, Hondo  
Rafael Alvarez, Crystal City  
Patrick Treff, Cotulla  
Heather Ellisor, Cotulla  
Jose Riojas, Asherton  
Hanock Osio, Cotulla  
Sonny Martinez, Pearsall  
Edward Flores, Crystal City  
Jesse Villastrigo, Asherton  
Victor Villarreal, Pearsall  
Steve Cisneros, Pearsall

HORNS

Laura Reed, Hondo  
Britany Beever, Pearsall  
Cindy Reichert, Medina Valley  
Alejandro Nieto, Cotulla  
Debra Anis, Cotulla  
Linda Perez, Pearsall  
Roxi Cantu, Pearsall  
Sophia Bustus, Cotulla

TROMBONE

Becky Luna, Cotulla  
Ambroisio Rios, Crystal City  
Edna Hernandez, Asherton  
Ramiro Chavera, Pearsall  
Stephen Schultz, Devine  
Jesse Navejar, Cotulla  
Maria Hernandez, Pearsall  
Wayne Ryan, Ingram

BARITONE

Reyes Bustamante, Crystal City  
Camillo Chavez, Medina Valley  
Melchor Esquivel, Crystal City  
Becky Castro, Cotulla  
Antonio Rico, Pearsall

TUBA

Danny Telles, Pearsall  
James Velasquez, Pearsall  
Luis Reyes, Pearsall  
Donny Sanchez, Asherton  
Blake Corley, Blanco

PERCUSSION II

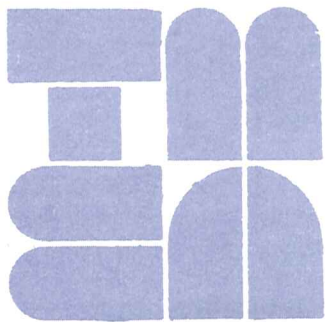
Jacob Bernal, Medina Valley  
Michele Wright, Medina Valley  
Vannessa Runnels, Devine

PROGRAMS AND PRINTING COURTESY OF

# SOUTH TEXAS music mart

Phone: 993-7300  
5253 S. Staples  
Corpus Christi, Texas 78411

## TEXAS MUSIC EDUCATORS ASSOCIATION



### DISTRICT XIV

**December 13, 1986**

7:30 p.m.  
Flour Bluff High School  
Auditorium

#### SYMPHONIC BAND CLINICIAN

Dr. Ray Cramer  
Indiana University  
Bloomington, Indiana

#### CONCERT BAND CLINICIAN

Dr. George Nelson  
Southwestern University  
Georgetown, Texas

Bryan Krnavek  
Symphonic Band Organizer  
Flour Bluff High School  
Corpus Christi, Texas

David Silva  
Concert Band Organizer  
Moody High School  
Corpus Christi, Texas

Ron Welborn  
Region Chairman  
Ingleside, Texas

Bill Cason  
Band Chairman  
Beeville, Texas

## SYMPHONIC BAND

Texas, Our Texas (audience participation)

### Program to be selected from the following:

- Blessed Are They,  
from "A German Requiem" ..... Brahms/Buehlman
- Fantasia in G ..... Mahr
- Galop ..... Shostakovich/Hunsberger
- The Rifle Regiment March ..... Sousa/Fennell
- Second Suite in F for Military Band ..... Hoslt
- I. March
- I. March
- II. Song with Words "I'll Love My Love"
- III. Song of the Blacksmith
- IV. Fantasia on the "Dargason"
- Symphony for Winds and Percussion ..... Downing
- I. Dancing Day

## CONCERT BAND

Star Spangled Banner (audience participation)

### Program to be selected from the following:

- Alpheus Concert March ..... Leckrone
- Beguine Festival ..... Osser
- Dona Nobis Pacem (thematic variations) ..... Sudduth
- Fandango ..... Perkins/Werle
- Gallop Humoresque ..... Smith
- Inverarry Overture ..... Barker

SPECIAL THANKS TO  
SOUTHWEST TEXAS STATE UNIVERSITY  
FOR USE OF FACILITIES

PROGRAMS COURTESY OF



NORTH SIDE  
**REITZ  
MUSIC CO.**  
Phone 453-1338  
SOUTH SIDE  
**REITZ HORN AND  
DRUM SHOP**  
Phone 444-6446

**THE TEXAS MUSIC EDUCATORS  
ASSOCIATION**

REGION XVIII BANDS  
PRESENTS

BAND CLINIC AND CONCERT  
JANUARY 14, 1984

**AAA-AA-A CLINICIAN**

Dr. George Nelson, Southwestern University  
Georgetown, Texas  
Organizer - Pat Norton - Luling, Texas

**AAAA CLINICIAN**

Dick Floyd  
Austin, Texas  
Organizer - Andy Davidson - Austin, Texas

AAA-AA-A PROGRAM TO BE SELECTED  
FROM  
CHEERIO - GOLDMAN  
CHORALE AND JUBILOSO - BARNES  
THE DRUNKEN SAILOR - ARR. HULL  
IF THOU BE NEAR - BACH/MOEHLMANN  
INTROIT AND CELEBRATION - MITCHELL  
A THOUSAND HILLS OVERTURE - SMITH

PICCOLO  
Guy Garrett-Smithville  
Lisa Zapalac-La Grange

FLUTE  
Margot Koslan-Giddings  
Amy Ellett-Liberty Hill  
Susan Foster-Dripping Springs  
Geneva Lucas-Dripping Springs  
Stefanie Neimeyer-Somerville  
Cindy Fritsche-Giddings  
Carol Smith-La Grange  
Elizabeth Jacobs-Caldwell  
Sara Waite-Navarro  
Kim Kosh-Pflugerville  
Kim Ellender-Lexington  
Annette Guenther-La Grange

OBOE  
Leigh Randolph-Elgin

E FLAT CLARINET  
Janice Muras-La Grange

BASSOON  
Mark Randel-Caldwell

CLARINET  
Teresa Chovanec-La Grange  
Vickie Farr-Liberty Hill  
Jewel Gray-Dripping Springs  
Leslie Johnston-Lake Travis  
Denise Lange-Liberty Hill  
Brenda Koslan-Giddings  
Michael Farrell-Lake Travis  
Rhonda Heintschel-La Grange  
Michelle Babin-Dripping Springs  
Kathy Lopes-Burnet  
Sandra Hines-Thrall  
Lisa Doss-Granger  
Suzi Wallace-Dripping Springs  
Melissa Nichols-Pflugerville  
Terri Pace-Marble Falls  
Mary Ann Herrera-Smithville  
Veronica Olivares-La Grange  
Diane Simpson-Schulenburg  
Joy Hall-Liberty Hill  
Kay Colley-Caldwell

Juanda Powell-Smithville  
Linda Lescher-Thorndale  
Leigh Ellender-Lexington  
Christine Evans-La Grange

BASS CLARINET  
Jennifer Molenaar-Dripping Sprgs.  
Mechelle Burris-Caldwell

CONTRA BASS CLARINET  
Julie Savage-Caldwell  
John Polk-Pflugerville

ALTO SAX  
Chris Peek-Burnet  
Sharon Besaw-Pflugerville  
Jerry Simpson-Dripping Springs  
Eileen Jones-Elgin  
Doug Roehm-La Grange  
Amy Frick-Schulenburg

TENOR SAX  
Kathleen Neighbor-Burnet  
Mace Farek-Flatonia  
Eddie Board-Smithville

BARITONE SAX  
Bobby Penley-Pflugerville  
Melissa Zimmerhanzel-Flatonia

TRUMPET  
Susan La Ronde-Dripping Springs  
Sarah Stark-Dripping Springs  
Bryan Farr-Liberty Hill  
Robert McHaney-Nixon-Smiley  
Dawn Jessee-LaGrange  
Dennis Brown-Dripping Springs  
Karen Earls-Lake Travis  
Eric Janda-La Grange  
Ida Vega-Giddings  
Shannon Butler-Navarro  
Ronnie Morris-Thorndale  
Dale Belmont-Lexington  
Jimmie Sanders-Weimar  
Pame Spencer-Luling

TROMBONE  
Marianne Carlson-Elgin  
David Pruett-Lexington  
Brian Johle-Thrall  
Steve Brahm-Liberty Hill  
Judy Smith-La Grange  
Lem Allen, Jr.-Luling  
Mike Reagan-Dripping Sprgs.  
Monica Marek  
David Jackson-San Marcos  
William Huffman-San Marcos  
Glenn Wearden-Caldwell  
Mark Henderson-Dripping S.

HORN  
Melissa Marcom-Liberty Hill  
Kelly Howell-Dripping Sprgs  
Dina Wellman-Dripping Sprgs  
Brian Pennington-Dripping S  
Lexi Bambas-La Grange  
Becky Morgan-Dripping Sprgs

BARITONE  
Kevin Morris-Thorndale  
Paul Gerdes-Dripping Spring  
Shelly Sedwick-Dripping S.  
David Harbers-Lexington  
Wesley Raabe-Weimer  
Margaret Lopez-Luling

TUBA  
Karl Galle-Liberty Hill  
Charles Childers-La Grange  
Paul Kacer-Caldwell  
Paul Renfro-Somerville

PERCUSSION  
Lisa Biddie-Dripping Spring  
Melvyn Foster-Dripping S.  
Dan Poole-Pflugerville  
Dan Wegmiller-Dripping S.  
Sarah Wottrich-La Grange  
Amy Laas-Manor

TIMPANI  
Phillip Gerdes-Dripping S.  
Tim Kram-Weimer

PICCOLO  
Jennifer Reeder-Georgetown  
Erica Peterson-Georgetown

FLUTE  
Molly Peck-A & M Cons.  
Annette Alexander-Georgetown  
Herman Chui-A & M Cons.  
Lorrie Tonn-Georgetown  
Sun Choi-A & M Cons.  
Jennifer Mishler-Georgetown  
Lisa Lauthun-Brenham  
Holly King-Georgetown  
Margaret Holck-Westlake  
Dory Creedle-Westlake  
Missy Maxwell-Brenham  
Elise Hanle-Westlake

OBOE  
Shelley Smith-Georgetown  
Kelly Gartner-A & M Cons.

BASSOON  
Craig Engleman-Westlake  
Kirsten Petersen-Georgetown  
Monique Brown-Georgetown  
Christie Ureliuss-Westlake

B FLAT CLARINET  
Karen Storts-A & M Cons.  
Lisa Boyd-Westlake  
Michael Hurtado-Georgetown  
Jeff Lucas-Westlake  
Cheryl Womack-Westlake  
Roger Cauvin-Westlake  
Karen Golden-Georgetown  
Karen Casburn-Brenham  
Ellen King-Georgetown  
Lori Kennedy-A & M Cons.  
Laura Shackelford-Brenham  
Andy Chisholm-Westlake  
Coleen Hatch-Westlake  
Charlene Turner-Georgetown  
Lynn Hollingsworth-Westlake  
Elaine Fortune-Georgetown  
Martha Bracamatez-Georgetown  
Lori Gray-Georgetown  
Joy Gardner-Georgetown  
Julie Greyer-Westlake  
Beth Anderson-Westlake  
Jennifer Young-A & M Cons.  
Lynn Gozano-Georgetown  
Jo Schnieder-Georgetown

AAAA PROGRAM TO BE SELECTED  
FROM  
PRELUDE ON THREE WELSH HYMN TUNES - Vaughn-Williams  
SYMPHONY NO. 1 - Bukvich  
THREE RUSSIAN CAMEOS - Rhoads  
FLOURISH FOR WIND BAND - Vaughn-Williams  
TRAUERSINFONIE - Wagner  
FOLK DANCES - Shostakovich

ALTO CLARINET  
Karen Bateman-Georgetown  
Carolyn Reid-Georgetown  
Diana Downing-Hays  
Regina Friedrich-Georgetown

BASS CLARINET  
Brenda Woelfel-A & M Cons.  
Kristy Bateman-Georgetown  
Chris Kraus-Westlake  
Paul Buschow-Leander  
Tracy Raly-Georgetown  
Ginnie Skaggs-Georgetown

CONTRA BASS CLARINET  
Leigh Northcutt-Westlake  
Paul Cunyus-Westlake

ALTO SAX  
Alan Buie-Georgetown  
Richard Serrato-Lockhart  
Connie Woods-Georgetown  
Mahlin Musgrove-Georgetown  
Tom Catlin-Georgetown  
Lynn Pearson-Westlake

TENOR SAX  
Derek Young-Georgetown  
Oscar Amos-Westlake  
Chris Wright-Westlake  
Beth Coleman-Leander

BARITONE SAX  
John Gray-Westlake  
Mark Matthews-Georgetown

TRUMPET  
Kevin Fortune-Georgetown  
Russell Campbell-Brenham  
Rick Alexander-Georgetown  
Rhonda Exley-Georgetown  
Penny Esau-A & M Cons.  
Elliott Gurwitz-Bastrop  
Jon Zarsky-Westlake  
Danny Pastor-Georgetown  
Jim Tout-Leander  
Hector Rivera-Del Valle  
Rock Brown-Georgetown  
Danny Shortlidge-Georgetown  
Darren Donaldson-Georgetown  
Michelle Moland-Georgetown

HORN  
Michelle Benziger-Georgetown  
Elasha Klawitter-Georgetown  
Ginger Berryhill-Georgetown  
Chris Salvo-Georgetown  
Terri Zavala-Georgetown  
Stacy Fuller-Georgetown  
Justin Sharp-Georgetown  
Scott Machalik-Del Valle

TENOR TROMBONE  
Patty Collier-Georgetown  
Derek Soltes-A & M Cons.  
Anthony Miranda-Georgetown  
Brian Seastruck-A & M Cons.  
Jim Lievre-Georgetown  
Paul Venable-Georgetown  
Paul Gipson-Westlake  
Eric Garrett-Westlake

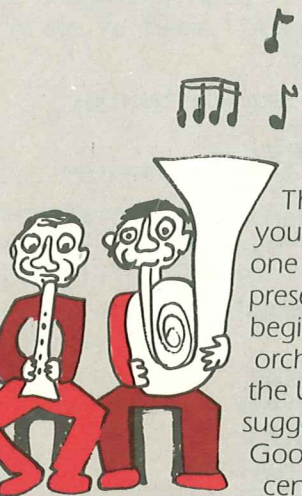
BASS TROMBONE  
David Lucas-Georgetown  
Mike Rose-Westlake  
Troy White-Georgetown  
Denny Wilson-Westlake

BARITONE  
James Wiley-Westlake  
Xuan Le-Brenham  
Mark Spinson-Brenham  
James McIntosh-Georgetown  
Glenn Ely-Westlake  
Scott Seidel-A & M Cons.

TUBA  
James Felan-Georgetown  
Bryan Rigney-Del Valle  
Allan Kendrick-Georgetown  
Gary Anderko-Georgetown  
Jaff Kade-Georgetown  
Matthew Frias-Georgetown  
Neal Schneider-Lockhart  
David Myers-Georgetown

PERCUSSION  
Cyndi Boydston-Georgetown  
Brian Quick-Georgetown  
Velvet Crosby-Georgetown  
Sandra Strickland-Hays  
Jimmy Russell-Hays  
Judy Young-Georgetown

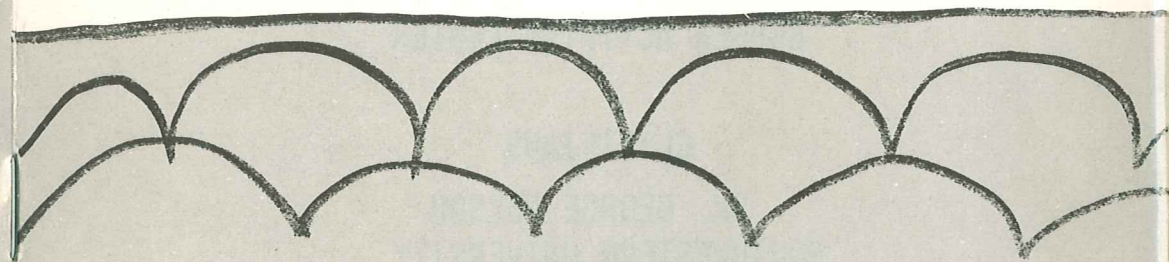
TIMPANI  
Mark Loescher-Georgetown  
Jimmy Sheffield-Georgetown



The program you are attending is one of thousands presented each year by beginning bands and orchestras throughout the U.S. Its importance is suggested by Benny Goodman; after half a century of public performances, he still remembered the first little

piece he played before an audience. Your encouragement will help make today's concert equally memorable to these aspiring students.

We congratulate them, their director, and the proud parents who gave them this opportunity to discover the joys and benefits that only participation in music can bring.



The Selmer Company  
Box 310 • Elkhart, Indiana 46515

Band and orchestra instruments and accessories.



AUSTIN INDEPENDENT SCHOOL DISTRICT  
ALL-CITY  
BAND FESTIVAL

1985

Illustrations by intermediate (8-11) drawing and painting students, Kalamazoo Art Center

AUSTIN INDEPENDENT SCHOOL DISTRICT

PROUDLY PRESENTS

THE

ALL-CITY HIGH SCHOOL JAZZ ENSEMBLE

THE

ALL-CITY JUNIOR HIGH SCHOOL BAND

AND THE

ALL-CITY HIGH SCHOOL BAND

IN CONCERT

MAY 11, 1985

7:30 P.M.

BURGER ACTIVITY CENTER

CLINICIANS

DR. GEORGE NELSON  
SOUTHWESTERN UNIVERSITY  
GEORGETOWN

MR. RAY MEZA  
JOHN MARSHALL HIGH SCHOOL  
SAN ANTONIO

## PROGRAM

ALL-CITY JAZZ ENSEMBLE

*Program to be announced*

ALL-CITY JUNIOR HIGH SCHOOL BAND

*The Big Cage.....K. L. King*  
*Un Poco Cinco..... John Fluck*  
*Bobby Sox Saturday Night.....Larry Norred*  
*A New Land/A New Nation-1836.....James Ployhar*

ALL-CITY HIGH SCHOOL BAND

*Symphonic Celebration and Dance.....Robert Foster*  
*Yorkshire Ballad.....James Barnes*  
*Fandango.....Floyd Werle*  
*George Washington Bicentennial March. John Phillip Sousa*  
*The Symphonic Marches: John Williams*  
\*\*\*

*The All City Junior and Senior High School Bands are composed of ten students from each school. They have been selected for their outstanding musicianship and their contributions to their school and community.*

*Mr. Ray Meza was Assistant Director of Bands at Georgetown High School for 14 years. In his tenure at Georgetown, they were State 4A Honor Concert Band two times and State 4A Marching Band Champion four times. Mr. Meza received the Texas Music Educator's Association Achievement and Leadership Award both in 1979 and 1984. He also was awarded the National Bandmaster's Citation of Excellence in 1984. Mr. Meza is in great demand as a band clinician and adjudicator.*

*Dr. George Nelson received the Bachelor of Music degree from Southwestern University and the Master of Music and P.H.D. from the University of Texas at Austin. He has done additional work at the University of Colorado and the Eastman School of Music. Dr. Nelson is presently Professor of Music and Chairman of the Music Department at Southwestern University.*



**T.M.E.A. REGION XIV CONCERT BAND**

**TENOR TROMBONE**

Dayton Fischer, Adams  
Fred Barrera, United  
Randy Davis, Memorial (Kingsville)  
Mike Gage, Tuloso-Midway  
Paul Skrovan, Memorial (Kingsville)  
Ismael Molina, Adams  
Daniel Pena, Christen  
Donna Ares, Gillett  
Maricela Machado, Christen

**BARITONE HORN**

Carlos Gonzales, Adams  
Joey Vasquez, Gillett  
Mario Lopez, Adams

**TUBA**

Julio Patino, Christen  
Todd Maverhan, Adams  
Arnulfo Salazar, United  
Kenneth Kuphe, Bishop  
Kerry Crawford, Clark

**PERCUSSION I**

Joey Garcia, Memorial (Kingsville)  
Marvin Morris, Memorial (Kingsville)  
Jim Lawrence, Adams

**PERCUSSION II**

Jimmy Duncan, Gregory-Portland  
Adan Quintanilla, Falfurrias  
Roberto Rios, Clark

**TYMPANI**

Marie Truesdell, Gregory-Portland

**REGION XIV**



**Texas Music Educators Association**  
**JUNIOR HIGH ALL - REGION SYMPHONIC AND CONCERT BAND**  
**AND**  
**HIGH SCHOOL REGION JAZZ ENSEMBLE**

**Dr. George Nelson**  
**Southwestern University**  
**Georgetown, Texas**  
**Symphonic Band Clinician**

**Billy Harrell**  
**Krueger Middle School**  
**San Antonio, Texas**  
**Concert Band Clinician**

**David Irving**  
**Del Mar College**  
**Corpus Christi, Texas**  
**Jazz Ensemble Clinician**

**Robstown High School Auditorium**  
**Robstown, Texas**  
**February 5, 1983 - 7:30 P.M.**

**Eugene Rhemann, Secretary**  
**Region XIV, TMEA**  
**Sylvia Garrett, Chairman**  
**Region XIV, TMEA**

**Jeff Stone, Band Chairman**  
**Region XIV, TMEA**  
**Dennis Hutchison**  
**Junior High Region Chairman**

**Susan Ellis - Mary Kay Cain - Symphonic Band Organizer**  
**Bryan Kmavek - Concert Band Organizer**

# PROGRAM

## ALL - REGION SYMPHONIC BAND

program to be selected from the following

Discology .....	Eric Osterling
Drunken Sailor .....	Grant Hull
Highlights from The Music Man .....	Willson/Reed
New Horizons .....	Ralph Hermann
Thousand Hills Overture .....	Claude Smith

## ALL - REGION CONCERT BAND

program to be selected from the following:

Variations On An Unfamiliar Theme .....	Feldstein/O'Reilly
Normandy Beach .....	John Edmondson
The Tall Pines .....	Leland Forsblad
Long for Winds .....	John Edmondson
Tomorrow from the hit movie Annie .....	Strouse/Norad
Slavonic Dance Suite .....	Dvorak/Curnow

1. Slavonic Dance Op. 46:#2
2. Slavonic Dance Op. 46:#4
3. Slavonic Dance Op.46:#3

## 1982 - 1983 HIGH SCHOOL ALL - REGION JAZZ BAND

selections will be made from the following:

Wind Machine .....	Nestico
Latin Quarter .....	Niehaus
It's You I Love .....	Holt
Live .....	
Blues Conference .....	Kidd

### SAXES ALTO

Eric Trejo, Alice (& Jazz)  
Luis Palacios, Laredo Martin

### TENOR

Alex Morales, Carroll C.C. (& Jazz)  
Joel Gonzalez, Alice

### BARITONE

Lorraine Upchurch, Flour Bluff

### TRUMPETS

Lead (& Jazz)  
\*Carlos Garza, Laredo United  
\*Dee Smith, Gregory - Portland  
Santiago Chapa, Alice  
David Alaniz, King C.C.  
Jerry Karkoska, Alice

### TROMBONES

Lead  
\*John Fuentes, Laredo Martin  
Hector Villarreal, Alice  
Jazz  
Garth Morgan, King C.C.  
Steven Andrews, Alice  
Bass  
\*Nefi Olivares, Alice

### RHYTHM

Piano  
Jon Glass, Flour Bluff  
Bass  
\*Robert Takatch, King C.C.  
Drums  
\*Raul Melendez III, Robstown  
Arnie Yanez, Alice  
Gaitar  
\*Hamp Brookman, Beeville  
Vibraphone  
\*Steve McDonald, Calallen

**RONN COX**

**JAZZ REGION CHAIRMAN**

\*Recommended for All - State Auditions.

# Texas Music Educators Association

*Presents the*

## **1981-82 REGION VII ZONE III ALL DISTRICT SYMPHONIC and CONCERT JUNIOR HIGH BANDS In Concert**

*Under the Direction of*

**Dr. George Nelson — Symphonic Band  
Mr. Michael L. Haithcock — Concert Band**

**January 30, 1982**

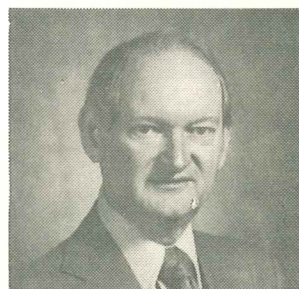
**7:30 P.M.**

**Temple High School Auditorium  
Temple, Texas**

## ALL REGION CONCERT BAND

Pride of the Wolverines .....	John P. Sousa
Masque .....	Francis McBeth
Old Scottish Melody .....	Pete Wiley
Apokryphos .....	Mike Leckrone
West Side Story .....	Duthoit/Bernstein

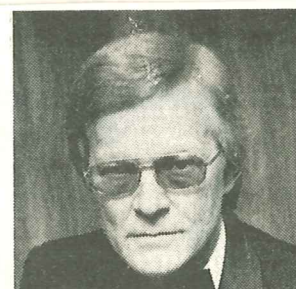
Mr. Ross Hay first started his career as a professional musician playing with a number of name bands throughout America. He then served four years as a carrier fighter pilot in the Navy. His first high school teaching assignment was at Sonora, Texas. During the four years there he developed the Sonora band into a Sweepstakes organization.



The band at Van, Texas was his next project. During Mr. Hay's twenty-six years as band director at Van, the band received 70 first division ratings in various UIL competitions. This included 17 years of Sweepstakes awards. His band was also selected as the Outstanding Band for three years at the Thomas Jefferson Band Festival at Dallas.

Mr. Hay is currently serving as a charter member of the UIL Judging Association and is used as a clinician and judge throughout the South. He has a Bachelors and Masters degree from Texas Christian University. Mr. Hay is a charter member of the Texas Bandmasters Association and a member of the Texas Music Educators Association.

Dr. George E. Nelson, conductor of the Symphonic Band at Southwestern University, is Professor and Coordinator of Instrumental Music Education, Brass and Percussion Instruments. A graduate of Southwestern University with the Bachelor of Music degree, he also holds the Master of Music degree and the Doctor of Musical Arts in Music Education from the University of Texas at Austin. In addition, he has done graduate work at Eastman School of Music and at the University of Colorado. He has taught and directed at Southwestern University since 1958 and has played an important role in establishing the superior reputation held by Southwestern music department.



## ALL REGION SYMPHONIC BAND

Pas Redouble .....	Saint-Saens/Frackenpohl
God of our Fathers .....	Claude Smith
Picasso Suite Sketch .....	Michel Legrand
Dreams of a Psychopath .....	Mike Francis
Chester .....	William Schuman

*In Concert*

REGION 18

**JUNIOR HIGH SYMPHONIC BAND**

**MR. ROBERT FLOYD**

BERKNER HIGH SCHOOL, RICHARDSON, TEXAS  
CONDUCTING

**JUNIOR HIGH CONCERT BAND**

**DR. GEORGE NELSON**

SOUTHWESTERN UNIVERSITY, GEORGETOWN, TEXAS  
CONDUCTING

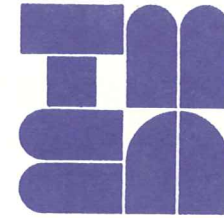
FEBRUARY 7, 1981

7:30 P.M.

BURGER CENTER

AUSTIN, TEXAS

REGION XIV



**Texas Music Educators Association**

**COLONEL ARNALD D. GABRIEL**  
*United States Air Force*  
Symphonic Band Clinician

**DR. GEORGE NELSON**  
*Southwestern University*  
Concert Band Clinician

**MAURICE PORTIS**  
*West Oso High School*  
Jazz Band Clinician

**DEL MAR COLLEGE AUDITORIUM**  
Corpus Christi, Texas  
JANUARY 5, 1980 – 8:00 P.M.

*Dr. Norman Sunderman, Chairman*  
Region XIV, TMEA

*G. V. Garcia, Band Chairman*  
Region XIV, TMEA

*Mike Olson, Symphonic Band Organizer*

*Bert Gillespie/Alfred Sosa, Concert Band Organizers*

*Ram Chavez, Jazz Band Organizer*

# Program

## ALL-REGION CONCERT BAND

*Program to be selected from the following:*

A Cohan Broadway Festival	.....	Arr. Werle
Overture on an Early American Folk Hymn	.....	Smith
Popcorn	.....	Kingsley
The Shawl Dance	.....	Skinner
Tartan Suite	.....	Jenkins
"Ye Banks and Braes O' Bonnie Doon"	.....	Grainger

## ALL-REGION JAZZ ENSEMBLE

*Program to be selected from the following:*

Nemesis	.....	Paul Clark
Chiapas	.....	Hank Levy
Prime Time	.....	Sammy Nestico
Dancing Men	.....	John LaBarbera
Ticker	.....	Bill Holman
All My Yesterdays	.....	Thad Jones

## ALL-REGION SYMPHONIC BAND

*Program to be selected from the following:*

Americans We	.....	Fillmore
La Belle Helene	.....	Offenbach/Odom
God of Our Fathers	.....	Smith
Variations on America	.....	Ives/Rhoads

## PROGRAM TO BE SELECTED FROM:

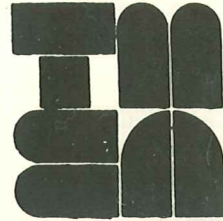
### SYMPHONIC BAND

ROYAL AIR FORCE MARCH PAST	.....	Davies
THE DRUNKEN SAILOR	.....	Hull
AMERICAN PIONEER SUITE	.....	Fox
RHAPSODIC EPISODE	.....	Carter

### CONCERT BAND

LITTLE SUITE	.....	Bartok-Lijnschooten
DISCOLOGY	.....	Osterling
FIGARO	.....	Allier-Wiley
KINGS GO FORTH	.....	O'Reilly
LITANY AND ALLELUIA	.....	Forsblad

*Region XIII*



*Texas Music Educators Association*

**PRESENTS**

*The All-Region Symphonic*

*and Concert Bands*

**IN CONCERT**

Symphonic Band Clinician--Dr. Tom Lee  
The University of Texas, Austin, Texas

Concert Band Clinician--Dr. George Nelson  
Southwestern University, Georgetown, Texas

CALHOUN HIGH SCHOOL AUDITORIUM  
PORT LAVACA, TEXAS

JANUARY 7, 1978 - 7:30 p.m.

Regional Chairman  
Joe Castellano, Vanderbilt, Texas

Regional Vice-Chairman  
John Williams, Port Lavaca, Texas

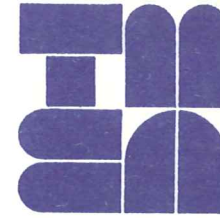
Region Band Chairman  
Edward Zamora, Port Lavaca, Texas

Executive Chairman  
Dr. Marvin Kirkman, Port Lavaca, Texas

Region Band Secretary  
Larry Lindsley, Port Lavaca, Texas

Region Executive Secretary  
Mrs. Jerry Greeson, Victoria, Texas

REGION XIV



**Texas Music Educators Association**

JAMES T. MATTHEWS  
*University of Houston*  
Symphonic Band Clinician

DR. GEORGE NELSON  
*Southwestern University*  
Concert Band Clinician

DEL MAR COLLEGE AUDITORIUM  
Corpus Christi, Texas  
JANUARY 8, 1977 - 8:00 P.M.

Dr. Norman Sunderman, *Chairman*  
Region XIV, TMEA

Humberto Gonzalez, *Band Chairman*  
Region XIV, TMEA

David Smith, *Symphonic Band Organizer*

Ron Welborn, *Concert Band Organizer*

# Program

## ALL-REGION CONCERT BAND

Homage March . . . . .	Wagner
Prerogatives . . . . .	Forsblad
Fandango . . . . .	Perkins
Selections from The Captain and Tennille . . . . .	Nowak

— INTERMISSION —

## ALL-REGION SYMPHONIC BAND

Program will be selected from the following:

Emblem of Unity . . . . .	Richards
Toccata . . . . .	Frescobaldi/Slocum
Blue Lake . . . . .	Chance
Liebestod . . . . .	Wagner/Bainum
Lincolnshire Posy . . . . .	Grainger
Minnesota March . . . . .	Sousa/Fennell

## REPERTOIRE Symphonic Band

Procession of Nobles-----	Nicholas Rinsky-Korsakov
Trauersinfonie-----	Richard Wagner
Russian Sailor Dance-----	R. Gliere
Elsa's Procession to the Cathedral-----	Richard Wagner

## Concert Band

Michelle-----	Arr. Arthur Wilkinson
Fandango-----	Frank Perkins
Prerogatives for Band-----	Leland Forsblad
"Ye Banks and Braes O' Bonnie Doon"-----	Percy Grainger
Sounds of the Captain and Tennille-----	Arr. Jerry Nowak

The Band Directors of Region XIII Respectfully dedicate this program to the memory of

### Tommy Williamson

Coordinator of Instrumental music at El Campo, whose work contributed to the development of bands in South Texas and whose students contributed His Best Efforts to the Region Band for the past two decades.

---

### Program Compliments Of

**Collins** MUSIC CENTER, Inc.

Of Port Lavaca, Texas 77979

617 N. VIRGINIA  
PHONE 552-2616  
PORT LAVACA, TEXAS 77979

2620 7TH ST.  
PHONE 713-245-3983  
BAY CITY, TEXAS 77414

706 W. JACKSON  
PHONE 543-2928  
EL CAMPO, TEXAS 77437



*REGION VIII*

*TEXAS MUSIC EDUCATORS ASSOCIATION*

*Presents the*

# **ALL REGION HIGH SCHOOL BAND**

*DICK FLOYD, CLINICIAN-CONDUCTOR*

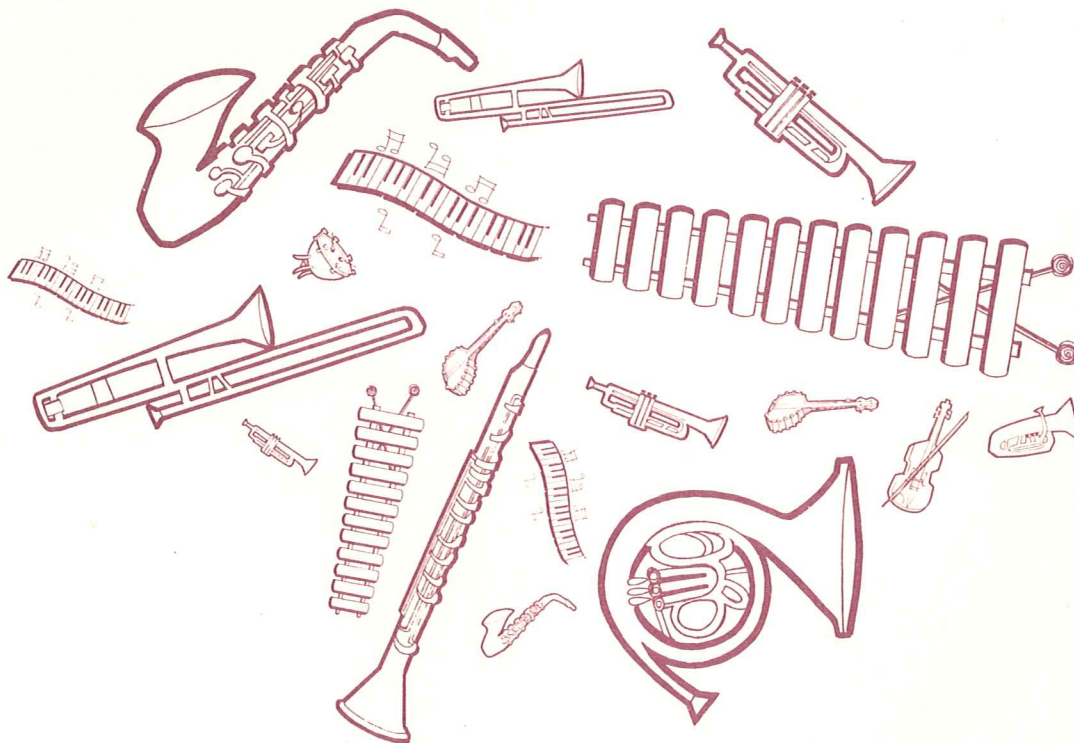
*BAYLOR UNIVERSITY, WACO*

*And the*

# **ALL REGION JUNIOR HIGH SCHOOL BAND**

*GEORGE NELSON, CLINICIAN-CONDUCTOR*

*SOUTHWESTERN UNIVERSITY, GEORGETOWN*



*JANUARY 26, 1974*

*KILLEEN HIGH SCHOOL AUDITORIUM*

*KILLEEN, TEXAS*

*7:30 P. M.*

WELCOME ..... Herbert Groth  
Superintendent of Schools – Killeen

Music to be selected from the following:

*ALL REGION JUNIOR HIGH SCHOOL BAND*

Jamaica Farewell ..... arr. Robert Lowden

March of the Magnificents ..... John Cacavas

Mini-Suite for Concert Band ..... Morton Gould

Album Leaf ..... Wagner-Johnson

Battaglia ..... W. Francis McBeth

Sonus Ventorum ..... Claude T. Smith

Sounds of the Three Dog Night ..... arr. Robert Lowden

An Irish Rhapsody ..... Clare Grundman

*ALL REGION HIGH SCHOOL BAND*

Trafalgar March ..... Zehle

Statement ..... Brent Heisinger

Pentland Hills March ..... arr. Capt. Jimmy Howe

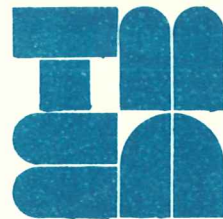
America ..... arr. John Cacavas

Variations on a Korean Folk Song ..... John Barnes Chance

MacArthur Park ..... Jimmy Webb-Holcombe

Salvation is Created ..... Tschesnokoff-Houseknecht

REGION XIII



Texas Music Educators Association

PRESENTS

The All-Region Symphonic  
and Concert Bands

in Concert

Symphonic Band Clinician:  
Jim Herrington  
East Texas State University  
Commerce, Texas

Concert Band Clinician:  
George E. Nelson  
Southwestern University  
Georgetown, Texas

CALHOUN HIGH SCHOOL AUDITORIUM  
PORT LAVACA, TEXAS  
January 6, 1973 - 7:30 P.M.

Mr. C. O. Chandler, Victoria  
Executive Chairman

Regional Chairman:	David Shepherd, Jr., West Columbia, Texas
Regional Vice-Chairman:	John Williams, Port Lavaca, Texas
Region Band Chairman:	Nat Alewine, Cuero, Texas
Region Band Co-Chairman:	Terry A. Rose, Port Lavaca, Texas
Region Band Secretary:	Larry Lindsley, Port Lavaca, Texas

The Industrial Independent School District

PRESENTS

THE INDUSTRIAL HIGH SCHOOL  
GOLDEN COBRA BAND



**IN CONCERT**

J. H. Castellano, Director  
John Walton, Associate Director

Dr. George E. Nelson  
Southwestern University—Georgetown  
GUEST CONDUCTOR

Friday, March 4, 1977

8:00 PM

INDUSTRIAL HIGH SCHOOL AUDITORIUM  
Mr. H. L. Garrison, Superintendent    Mr. J. Jimerson, Principal

# PROGRAM

- MARCH THE SOUTHERNER . . . . . Russell Alexander  
ALLELUIA! LAUDAMUS TE . . . . . Alfred Reed  
LINCOLNSHIRE POSY . . . . . Percy Aldridge Grainger  
1. "Dublin Bay"  
2. "Harkstow Grange"  
3. "The Lost Lady Found"

Dr. George E. Nelson – Conducting

LA COMPARSA . . . . . Ernesto Lecuona

- RICHARD RODGERS: A Symphonic Portrait for Band . . . . . Frank Erickson, Arranger  
1. "There is Nothin' like a Dame"  
2. "The Sound of Music"  
3. "I Whistle a Happy Tune"  
4. "A Wonderful Guy"  
5. "Climb Ev'ry Mountain"

MACARTHUR PARK . . . . . Jimmy Webb

- KRIS KRISTOFFERSON IN CONCERT . . . . . Elliot Gilman, Arranger  
1. "Me and Bobby McGee"  
2. "Sunday Mornin' Coming Down"  
3. "Why Me"  
4. "Help Me Make it Through the Night"  
5. "For the Good Times"

THEM BASSES MARCH . . . . . G. H. Huffine

J. J. Castellano – Conducting



## About Our Guest Conductor

Dr. George E. Nelson, conductor of the Southwestern University Band, in Georgetown, is Associate Professor of Instrumental Music Education, Woodwinds, Brass and Percussion Instruments. A graduate of Southwestern University with the Bachelor of Music Education degree, he holds the Master of Music degree and the Doctor of Musical Arts in Music Education degree from the University of Texas at Austin. He has also done graduate work at Eastman School of Music and the University of Colorado. Dr. Nelson is a frequent adjudicator and clinician for various music events and contests throughout the state. Listed in LEADERS IN EDUCATION, he holds membership in Phi Beta Mu, Texas Bandmasters Association, Texas Music Educators Association, Music Educators National Conference, and others.

# REPERTOIRE

THE PROGRAM WILL BE CHOSEN FROM THE FOLLOWING SELECTIONS:

## CONCERT BAND:

- Marches: Moehلمان  
Mitchell – The Silver Cornets March  
Smetana – Nelhybel – Three Revolutionary Marches,  
1st and/or 2nd

## Concert Works:

- Grundman – An Irish Rhapsody  
Smith – Sonus Ventorum  
Lijnschooten – Netherlands Suite  
Lowden – New Sounds of the Carpenters  
Kingsley-Werle – Pop Corn  
Tatgenhorst – Here's Chicago

## SYMPHONIC BAND:

- Marches:  
Souise – The Black Horse Troop  
Souise – Pride of the Wolverines

## Concert Works:

- Dello Joio – From Every Horizon  
Mailman – Liturgical Music for Band  
Shostakovich – Symphony No. 5, Finale  
Reed – Greensleeves  
Latham – Three Chorale Preludes  
Ward-Dragon – America the Beautiful  
Reed – Russian Christmas Music

U.I.L. Region XVIII  
All Region  
Intermediate Band

in concert

GEORGE NELSON Conducting

ALMA THOMAS FINE ARTS BUILDING  
Southwestern University  
Georgetown, Texas

February 20, 1971

T.M.E.A. Region XVIII  
All Region  
Symphonic Band  
Concert Band

in concert

GEORGE NELSON  
BILL WOODS Conducting

ALMA THOMAS FINE ARTS BUILDING  
Southwestern University  
Georgetown, Texas

January 13, 1973

Concert Band: *LA MEXICANA (2nd Mar.)*  
*Paraphrase on La Boheme*  
*Intro. + Fantasia - Mitchell*  
*Prelude, Beghou*  
*Battle Hymn Ployhav*

Selection for membership in these Regional Bands was accomplished through competitive tryouts. These tryouts were open to all High School Band students in Region XVIII. Performers indicated by asterisks are eligible to try out for the All State Band at area tryouts later this month.

All day clinics under the direction of Mr. Nelson and Mr. Wood preceded this evening's concert.

Recordings of this performance will be available thru Reelsound. Please check with the recording technician at the close of the concert.

*Symphonic: Handel in the Strand*  
*Var. on theme by Robt. Schumann*  
*Ye Banks + Braes, Grainger*  
*Beguine, Oser*  
*Pop Corn*

PROGRAMS COURTESY OF  
 North Austin  
 REITZ MUSIC COMPANY  
 South Austin  
 REITZ HORN & DRUM SHOP

Selection for membership in this Regional Intermediate Band was accomplished through competitive try-outs. These try-outs were open to all Intermediate Band students through grade 9 in Region XVIII, including Austin and surrounding communities in the northern district.

An all day clinic, George Nelson Directing, preceded this concert.

This evening's program will be drawn from the following selections.

Senor Senor	Carlos Guermos
Nimrod	Alfred
Battaglia	Francis McBeth
From Shire and Sea	A. C. Davis
Minstrel Boy	Arr. Leroy Anderson
Themes from Great Italian Movies	Arr. Cacavas

Recordings of this performance will be available.

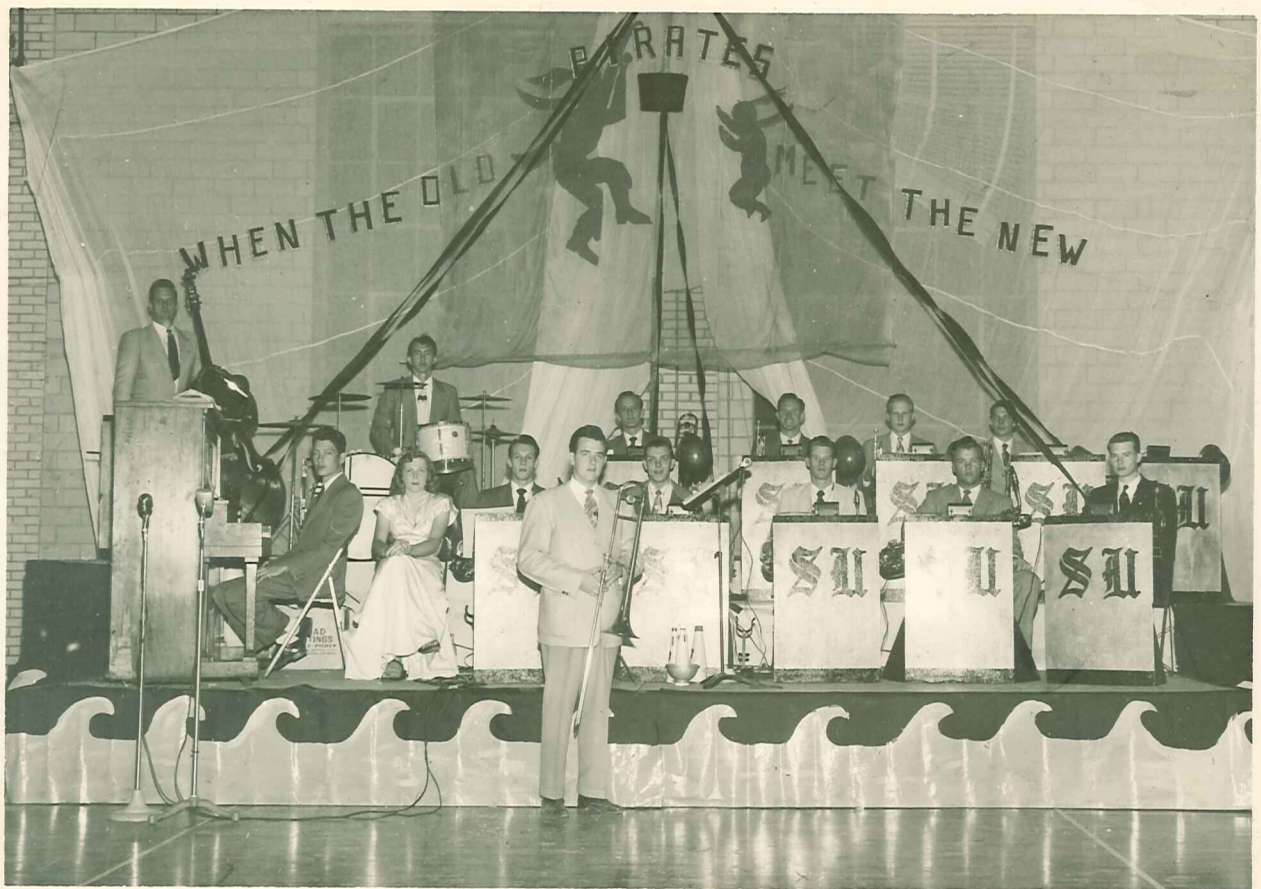
PROGRAMS COURTESY OF  
 North Austin  
 REITZ MUSIC COMPANY  
 South Austin  
 REITZ HORN & DRUM SHOP

PICTURES



S. U. BRASS, 1948 - RALPH JONES, DIRECTOR





S.U. JAZZ, 1948 - PAT MCNALLAN, DIRECTOR



S.U. JAZZ, 1946 - GRANT SCUGGINS, DIRECTOR



S.U. BAND, 1948 - RALPH JONES, DIRECTOR



GEORGE JANSEN

PHIL MANNING

PROF. TOM DOUGLAS

PAT MCNALLAN

DICK FRERKING

G. NELSON

Alumni Band  
Homecoming 1975



Durward Howard    Lee Boyd Montgomery  
Hugo Gonzalez    Daniel Aleman  
George Nelson    Carlos Luna  
                         Phil Geiger

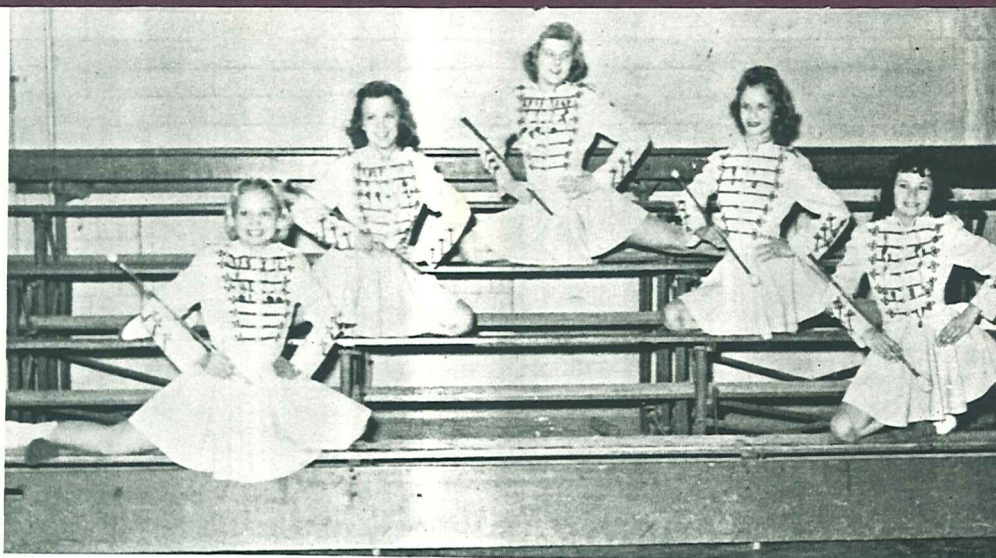
JUDGE'S BREAK  
NUEVO LAREDO, 1987





ivan

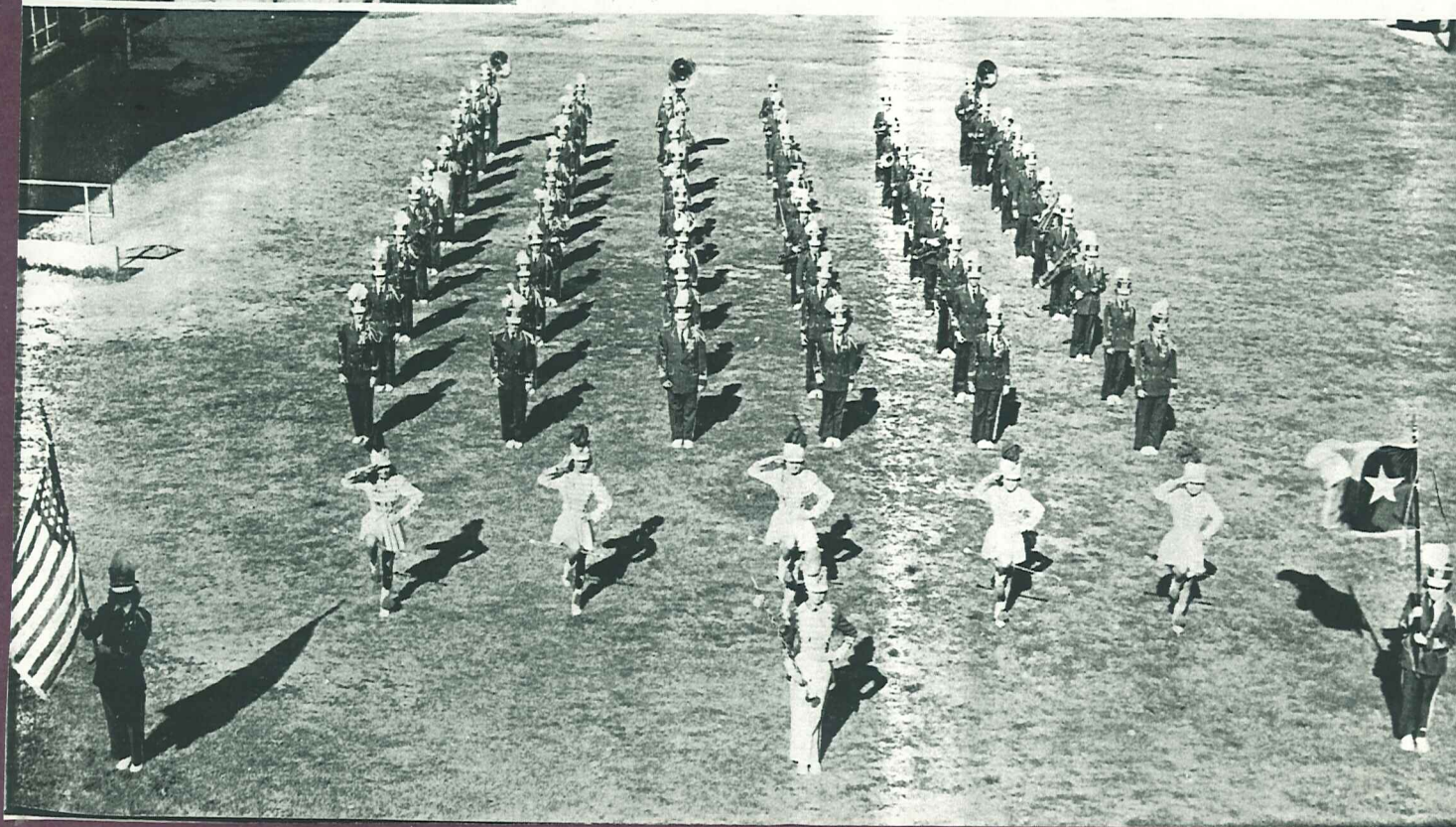
BAND PERT AND PRETTY are the five majorettes of the Eagle Band. They are Pat Gamble, Jo Ann Rosenblad, Cathy Anderson, Karen Thorne, and Alice Valentine.



## GEORGETOWN HIGH SCHOOL BAND 1958

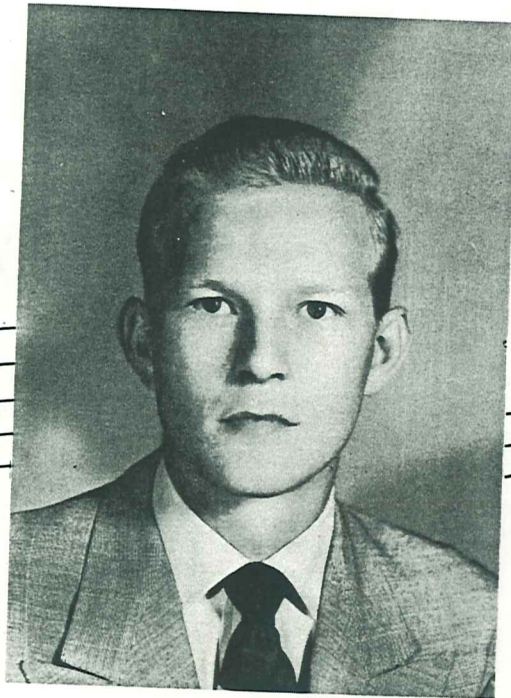
DIRECTING THE BAND in the half-time shows and parades this year is their competent drum major Mary Ann Jones, who led the band in impressive marching shows.

WINNER OF SEVERAL PARADE MARCHING CONTESTS, the Eagle Band brings home many honors. The band won the \$100 prize for first place in the Lampasas Rehabilitation Parade and placed second out of approximately sixty Class "A" bands at the University of Texas Band Day.



# Chorus

1952



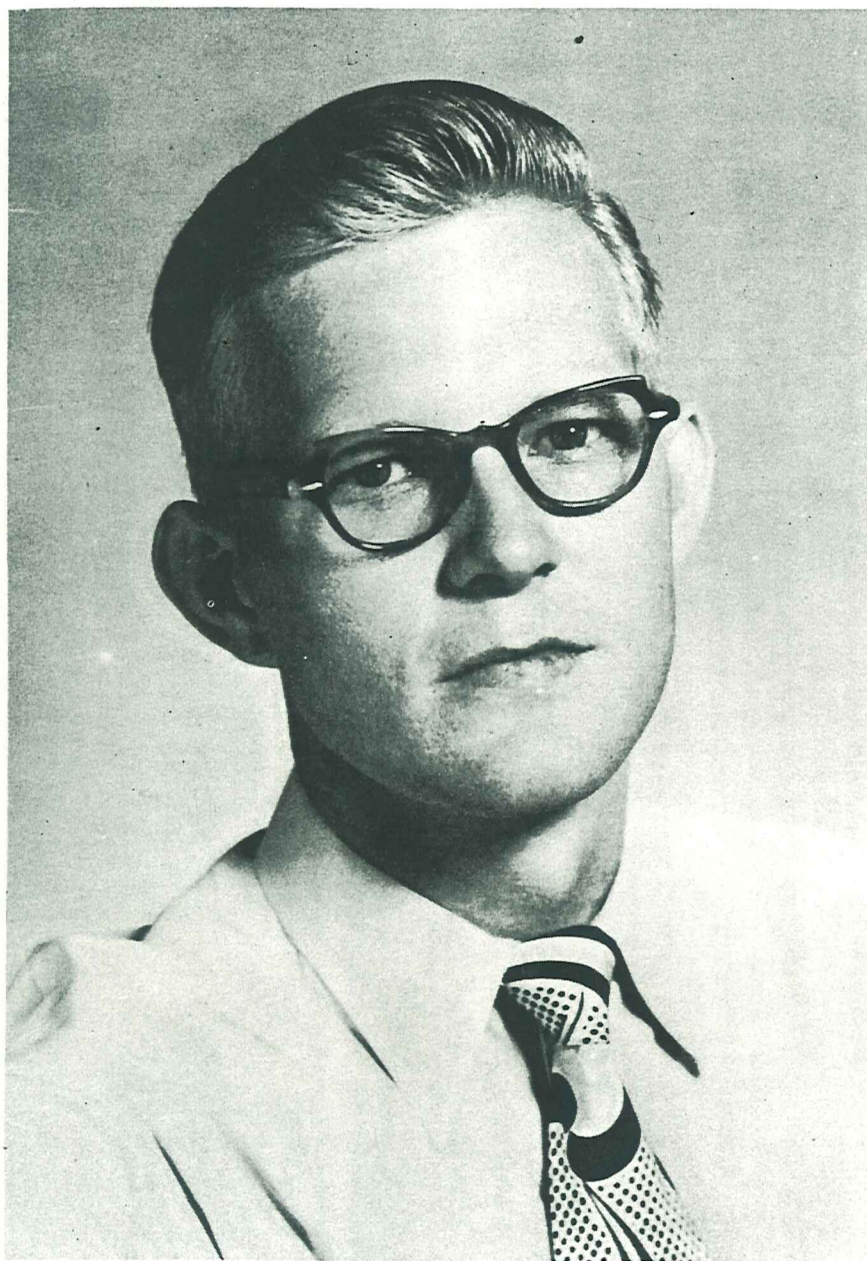
Chorus Director

GEORGE NELSON

Band Director



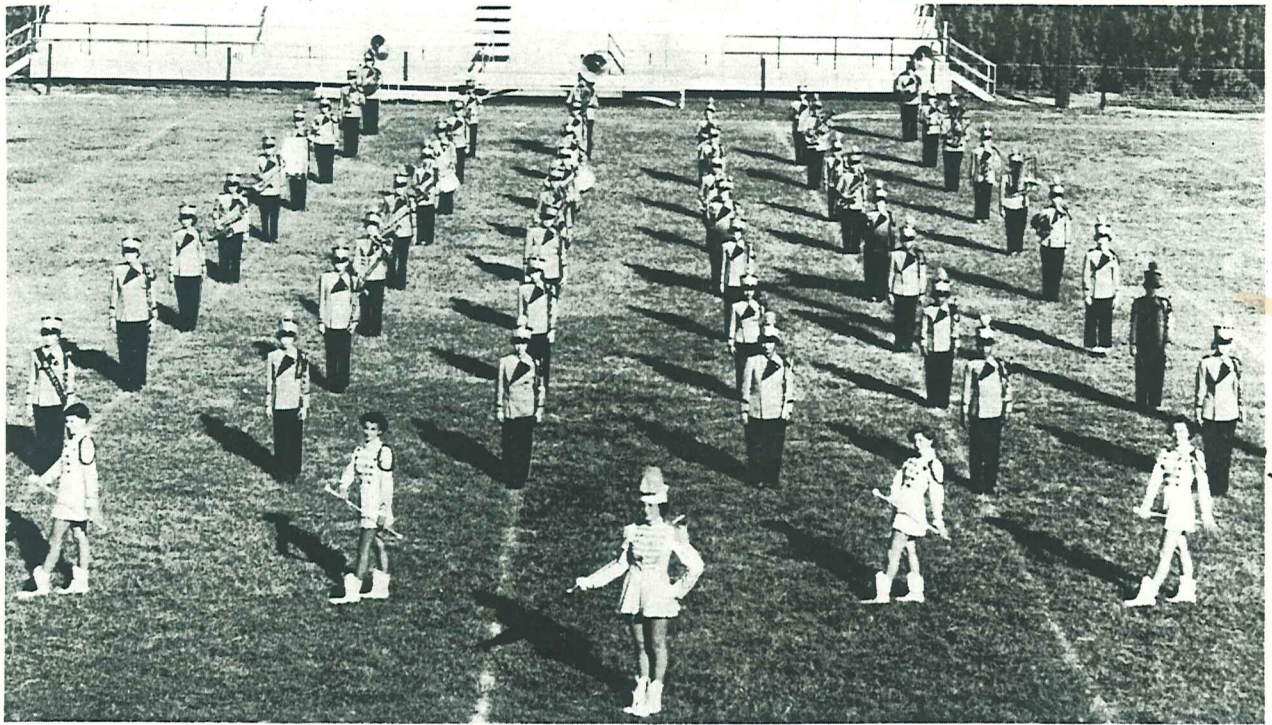
# DEDICATION



GEORGE NELSON

Mr. Nelson has been a member of the E-E Faculty since 1950. His charming personality and passionate devotion to music have won the respect and admiration of the students and faculty. As a tangible expression of our esteem, and as a token of the bond of friendship which exists between him and the students of Edcouch-Elsa High School, we proudly dedicate the 1953-54 La Avispa to him.





**EDCOUCH-ELSA  
YELLOWJACKET BAND**  
1954



**PERFORMING CHORUS**

HONORS/DEGREES

The **A**lumni Association  
of  
Southwestern University

Salutes

George Nelson



"Mr. Homecoming" - 1975

*Warren Roberts*

PRESIDENT, ALUMNI ASSOCIATION

*Marion C. Roney, Jr.*

EXECUTIVE DIRECTOR, ALUMNI ASSOCIATION

*James H. ...*

UNIVERSITY PRESIDENT

Citation for Mr. Homecoming Award

Each year at Southwestern's Homecoming the Alumni Association seeks to honor members of the faculty and staff whose contribution to the University is particularly meritorious. This year two of our most popular, loyal, and dedicated faculty members are sharing the "Mr. Homecoming" honors.

In alphabetical order . . . Tom Douglass has been on the faculty of the School of Fine Arts since 1947. We have all enjoyed his own virtuosity on the strings as well as that of students whom he has taught. His students have "done him proud" on campus and many have gone on to successful professional careers themselves. Of course, Tom is almost equally well-known for his prowess on the golf course!

George Nelson . . . that's Dr. Nelson, if you please . . . is an alumnus of Southwestern, celebrating the silver anniversary of his class of 1950 at this year's Homecoming. He's been teaching and performing musically at Southwestern as a faculty member in the School of Fine Arts since 1958. His musical ensembles, from the full-size stage band to jazz combos and brass quartets, all bear the distinctive "Nelson" touch, which means they're as good as a band or musical group can be!

The Alumni Association takes pride in saluting these two outstanding members of Southwestern's faculty and bestowing on them, with great affection and appreciation, the title

"MR. HOMECOMING" 1975

November 1, 1975  
Georgetown, Texas

MEMBERSHIP



CERTIFICATE

# Phi Beta Mu

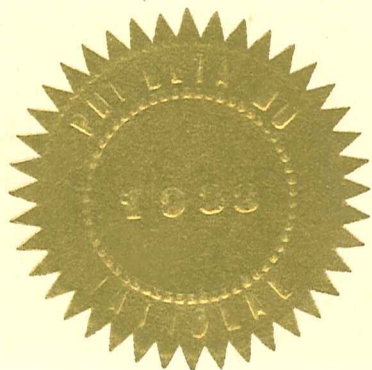
NATIONAL SCHOOL BANDMASTER FRATERNITY

HONORS

GEORGE NELSON

AS AN ACTIVE MEMBER

AND IS ENTITLED TO ALL THE RIGHTS AND PRIVILEGES THEREBY CONFERRED



*Wayne McDonald*  
PRESIDENT

*Jack Mahan*  
SECRETARY

February 13, 1971

DATE

# Southwestern University

On the nomination of the Faculty and  
election by the Trustees of the University  
has conferred upon

**George Edward Nelson**

the degree of

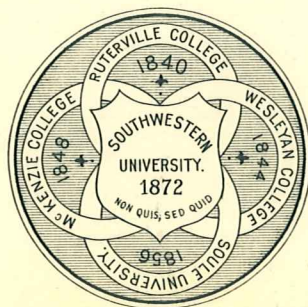
**Bachelor of Music Education**

with all the Honors, Rights, and Privileges to that degree appertaining.

In Testimony Whereof, the seal of the University and the  
signatures as authorized by the Trustees are hereunto affixed.  
Given at Georgetown, Texas, on this twenty-ninth day of May  
in the year of our Lord nineteen hundred fifty

*Claude Carr Cordy*  
CHAIRMAN OF THE TRUSTEES

*Eugene Patton*  
SECRETARY OF THE TRUSTEES



*Wm. O. Lynch*

PRESIDENT

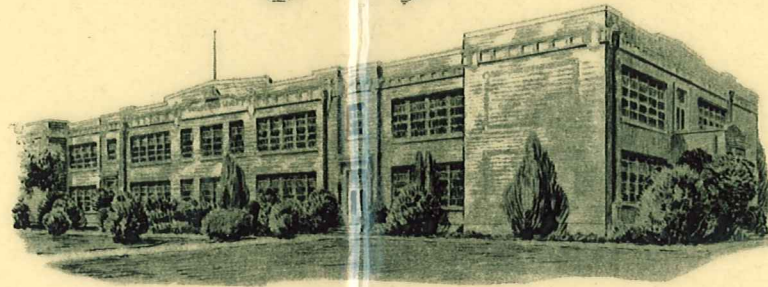
*Henry Edwin Meyer*

DEAN OF THE FACULTY

*Wm. L. Shaw*  
SECRETARY OF THE FACULTY

Taylor  
Senior High School

Taylor



Texas

George Edward Nelson

having completed in a satisfactory manner the regular Course of Study  
as prescribed for the High School Department is entitled to receive this

Diploma

by order of The Board of Education

May 25, 1945  
Date of Award

W. Miles

Edward P. Robbins

# The University of Texas

has conferred on  
George Edward Nelson  
the degree of  
Master of Music

and all the rights and privileges thereunto appertaining.  
In Witness Whereof, this diploma duly signed has  
been issued and the seal of the University affixed.

Issued by the Board of Regents upon recommendation of the  
faculty on this the twenty-seventh day of August A. D. 1953



*James P. Hart*  
Chancellor

*Logan Wilson*  
President

*A. P. Bryan*  
Dean



The University of Texas  
at Austin

has conferred on  
George Edward Nelson  
the degree of  
Doctor of Musical Arts

and all the rights and privileges thereunto appertaining.  
In Witness Whereof, this diploma duly signed has  
been issued and the seal of the University affixed.

Issued by the Board of Regents upon Recommendation of the Faculty  
on this twenty-fifth day of August, A.D. 1973.

*A. G. M. Neese Jr.*  
Chairman, Board of Regents



Stephen H. Spurr  
President



*Texas Music Educators Association*

extends appreciation to

*Southwestern University Band*

*George Nelson, Conductor*

for participation in the

*1991 TMEA Clinic-Convention*

and commends the group for excellence in musical performance

*Frank G. Couch*  
Band Vice-President

*Kathy L. Feshburn*  
President