

## Wilburn Wheeler

1909

Wilburn Wheeler was born on October 6, in Gilmer, Texas. His early years were spent in east and central Texas and he developed a great love for mathematics and for music. He became an excellent performer on his trombone and when he finally decided to go to college, he selected Texas Tech since he could study Math and also get to play his horn. After graduating from Tech he taught at several schools in West Texas, including Rankin, where he was always hired as a Math teacher and assigned to teach band also.

In 1946, he came to Levelland and took over a band program that had almost folded during World War II. He immediately started to recruit and used attendance at the Texas Tech band camp as a reward to those students who did well. He gained almost immediate success and the band received top ratings at the year's contest. Soon the Levelland High School Band was one of the top bands in the area and the top players in the band gained membership in the All-State Band. The band received 11 sweepstakes awards and also won the big contest in Corpus Christi in their class. Prof. ( D.O.) Wiley of Tech always conducted a clinic with the band each spring and as a result, many players went to Tech. In 1958, Levelland founded a Junior College, South Plains, and Wilburn joined to faculty there as Math professor and band director. He built this group into an 80 piece band until his retirement in 1975, which was brought on by his health. During his retirement years he developed a business in Life insurance.

Many former students will remember his beating of a trombone to pieces in rehearsal one day, not knowing it was a junk one, but "it sure got the band to play a lot better." Wilburn died in April of 1988.

*Wilburn Wheeler*

# NEWS

from



Office of Public Relations  
South Plains College  
Levelland, Texas 79336  
806-894-4921

LEVELLAND -- The teaching career of Wilburn Wheeler has spanned 43 years -- in tiny school houses and college classrooms -- as principal, coach, band director, and teacher.

Wheeler, 64, will retire in May from a teaching post at South Plains College, where he joined the faculty in 1958. A faculty and staff reception honoring Wheeler upon his retirement is scheduled for 4 p.m. on Friday (April 12) in the Texan Annex on campus. Hosting the event will be the SPC Faculty Women's Club. He and his wife, Helen, reside at 138 Elgin. Mrs. Wheeler is catalog librarian at the SPC Library.

Wheeler's career began in 1927 as a teacher at the Lubbock County Line School, no longer in existence, and rose to chairmanship of the math and engineering departments at South Plains College.

In between, he has taught at Kerr, Andrews, Rankin, San Saba and Freer before coming to Levelland in 1946. Wheeler was one of two teachers at the Kerr County school during the 1930s where he taught four grades (fifth through eighth). While at Andrews, he had the triple role of high school principal, math and science teacher and coach.

He was junior high school principal and for the first time, band director at Rankin, teaching there for five years. He later taught high school math and directed the high school bands at San Saba and Freer.

(MORE)

Wilburn Wheeler/2

But Wheeler will be remembered most vividly here for his career in Levelland, where he was director of the Levelland High School band from 1946-1958. His band won sweepstakes honors for nine of those 12 years.

For the first 10 years of his tenure at SPC, Wheeler was director of the Texan Band in addition to teaching math. Then, about seven years ago, he was appointed math and engineering departmental chairman.

There are several plaques in Wheeler's office at the College to remind him of accomplishments here. One plaque is an "Excellence in Teaching Award" for 1967-68, presented by the First National Bank of Levelland. Another reminds him of May 7, 1973, "Appreciation Night," in which he was honored by the SPC Texan Band and former members of the LHS band. Seven faculty members at SPC are exes in the high school band.

However, a teaching career wasn't on his mind when he enrolled at Texas Tech University more than 40 years ago. "My big idea was to be an engineer. But the times got a little rough during the Depression. School teachers could get a job and engineers couldn't," he said. "I just drifted out of engineering."

But Wheeler does not regret the switch to teaching. "I have enjoyed most of it all the way through. If I didn't, I would have quit," he laughed.

Wheeler earned a bachelor's degree in math in 1933 and received a master of education degree in 1949 and a master of science degree in 1963, all from Texas Tech.

Besides math, music has been a long love in his teaching career. He recalls playing the trombone as a teenager for the Spearman municipal band and later for the Texas Tech and National Guard bands.

We should like to submit the name of Professor Wilburn R. Wheeler of South Plains College, Levelland, for your careful consideration for one of the ten Minnie Stevens Piper awards for the year 1969.

Accumulating some of the most coveted awards in the field of education in the West Texas area, Prof. Wheeler was the recipient of the "Excellence in Teaching" award in <sup>1968</sup>1967 presented by the First National Bank of Levelland to the SPC instructor considered by the administration and faculty to be the best qualified in the field of instruction. In 1962 he was South Plains College's male candidate for the "Teacher of the Year" award.

He has taught 25 years in the public schools and 10 years in college. He has traveled the whole range of the teaching professions---classroom teacher, coach, administrator, as well as band director. The son of a Methodist minister, at the age of eighteen, Wheeler got his first teaching position at a rural school in Lubbock County, and with only one year of college completed, he taught science and mathematics in the rural high school and several fourth grade subjects. After completing college, he served as high school principal, mathematics teacher, football and basketball coach at Andrews High School. Later in Rankin, Texas, he served as junior high principal.

It was here he began his career as a band organizer. He held the job of band director in San Saba and later a similar position in Freer. The move to Levelland came next when he began at Levelland High School as teacher and band director. His teaching career was briefly interrupted when, at the age of thirty-five, he served in the Navy during the latter part of World War II.

(More)

Wheeler...add...1

Serving as chairman of the Department of Mathematics and Engineering at South Plains College, Wheeler also served as band director from the College's inception until this year, when he relinquished the latter role.

He received the Bachelor of Arts degree in Mathematics in 1933, Master of Education degree in 1949, and Master of Science degree in Mathematics in 1963, all from Texas Technological College. He attended McMurry College before entering Tech.

Always striving to upgrade his quality of instruction, Wheeler has been awarded National Science Foundation Grants and attended a summer institute at San Jose College, San Jose, California in 1960; he studied basic engineering courses at the University of Missouri in 1961; and studied computer science at Texas A&M in 1965. In 1966 he attended the University of Arkansas where he studied engineering mechanics and related courses.

He carries a teaching load of <sup>twelve</sup> ~~fifteen~~ hours including at various intervals algebra, ~~mathematics of finance~~, analytic geometry, differential and integral calculus, and <sup>Engineering Mechanics</sup> ~~statics~~. He helps select the text books and prepares his own syllabi for these courses. He cooperates with the other instructors in the Math and Engineering Department to prepare South Plains students for senior college work by giving them the best possible background.

An enthusiastic contributor to community enterprises, Wheeler taught a course in community band at South Plains College during the evenings in 1967 with people from all over the community participating.

One event highlighting his life was in 1961 when he was honored by the entire community at a Levelland High School football game during halftime.

(More)

Wheeler...add....2

The High School Band and the director, Bill Woods, arranged the special occasion. As former director of the band, Wheeler was presented with a plaque as a "distinguished service award of 12 years of untiring service." A similar plaque, along with a large framed portrait of himself, were also presented to him to be hung permanently in the Levelland High School Band Hall as a tribute and a "thank you" by former and future band members for the devoted work he gave to the organization. Dr. D. O. Wiley, former director of the Texas Tech College Band and considered to be "Dean of Texas Bandmasters," was there to participate in the ceremonies honoring Prof. Wheeler, a longtime friend.

He married the former Mary Helen Whatley in 1934. She is now employed as Assistant to the Librarian at South Plains College and is equally interested in South Plains College and the field of education.

The couple has two daughters, Mrs. <sup>Sue</sup>~~Ronald~~ Grell of Artesia, New Mexico; and Mrs. <sup>Grace</sup>~~Thomas~~ A. Rogers, Lubbock, Texas; and one son, Bill Wheeler, a senior at Texas A&M, majoring in aero space engineering; and six grandchildren.

Prof. Wheeler is a member of the Methodist Church, Kappa Kappa Psi, Phi Beta Mu, American Mathematical Association, Texas Junior College Teachers Association, and ~~the Kiwanis Club.~~

Often heard to remark, "I wish my students would study half as much as I do!" Mr. Wilburn R. Wheeler can sincerely say this. Since his decision to leave full-time high school band work four years ago and go back into his original field of mathematics, Mr. Wheeler has spent many long hours of study and classroom preparation for his math courses. He has been mathematics teacher and band director at South Plains College since it opened in 1958. South Plains is a public junior college located in Levelland, Texas. The College President is Dr. Marvin Baker.

Mr. Wheeler carries a teaching load of fifteen hours including at various intervals algebra, mathematics of finance, analytic geometry, differential and integral calculus, and statics. He helps select the textbooks and prepares his own syllabi for these courses. He cooperates with the other teachers in the Math Department to prepare South Plains students for senior college work by giving them the best possible background in math.

In connection with these goals, Mr. Wheeler has been awarded National Science Foundation Grants for the last two summers. He studied the first summer at San Jose State College in San Jose, California, in their Graduate Math Department. The second grant sent him to the Graduate Engineering Department of the University of Missouri in Columbia, Missouri. In addition to the courses completed, Mr. Wheeler was closely associated with a cross section of the nation's junior college teachers and was able to gain valuable experience through comparing and exchanging ideas and

information with these diverse groups of teachers.

Besides his main job as mathematics teacher, Mr. Wheeler is also band director at South Plains. Music is one of his particular loves and has consumed a major portion of his life. The band at South Plains consists of about twenty-five members outfitted in bright blue and white Western uniforms. Mr. Wheeler and his group of musicians are a familiar sight at college basketball games and all special college programs. A select group from the band compose the college dance band which Wheeler also directs, and they play for the major college dances.

An extremely friendly and affable man, Mr. Wheeler is always available for conferences with any of his students to help them with problems of both an academic and personal nature. So many students gather in his office in the afternoons that he has been asked jokingly if he were teaching a math lab.

Before coming to South Plains College, Mr. Wheeler served in the Levelland Public School System for twelve years as high school band director. Starting in 1946 with only fifteen students, he worked hard to establish an expanding music program for the Levelland Schools and met with considerable success. While there, his bands won nine Sweepstakes Awards in competition and became known as one of the finest bands in the state, winning recognition at the State Fair of Texas in Dallas, the annual Battle of Flowers Celebration in San Antonio, the Tri-State Band Festivals in Enid, Oklahoma, and the Buccaneer Music Festival in Corpus Christi.

A time-consuming job, Mr. Wheeler had at first both junior



and senior high school bands and, for a while, taught string instruments as well. However, he always felt his time and efforts well spent for he looked upon his bands not only as an enjoyable extra-curricular activity for his students, but a character-building one as well. This contribution to the lives of young people was his investment in the future, he felt.

His thirty-one years of teaching experience is not limited to band direction, however. He has traveled the whole range of the teaching profession---classroom teacher, coach, administrator, as well as band director. At eighteen, Mr. Wheeler got his first teaching position at a rural school in Lubbock County, and with only one year of college completed, he taught science and mathematics in the rural high school and several fourth grade subjects. After completing college, he served as high school principal, mathematics teacher, and football and basketball coach at Andrews High School. Later in Rankin, Texas, he served as junior high principal, and it was here he began his career as a band organizer. He held the job of band director in San Saba, and later a similar position in Freer, in then notorious Duval County. The move to Levelland came next, and here he remained until he joined the faculty at South Plains. His teaching career was briefly interrupted when, at the age of thirty-five, he served in the Navy during the latter part of World War II.

Mr. Wheeler attended both McMurry College in Abilene and Texas Technological College in Lubbock, graduating from Texas Tech in 1933 with a Bachelor of Arts Degree in Mathematics. He

earned his Masters Degree in Music Education from Texas Tech in 1949. Since then he has had fifty-two hours of post-graduate work including twenty-nine hours of advanced mathematics taken to prepare further for his junior college teaching position.

Wheeler is an honorary member of Kappa Kappa Psi, national band fraternity and Phi Beta Mu, national band masters fraternity. He served in 1956 as Contest Chairman of Region I Texas Music Educators Association. He was Secretary-Treasurer of that same organization for four years.

Mr. Wheeler holds memberships in the Texas Music Teachers Association, and the Texas Junior College Teachers Association. He attended the State Junior College Teachers Convention held in Dallas in 1940. He has been notified that he will appear in Volume XX of WHO'S WHO IN AMERICAN EDUCATION.

Mr. Wheeler is a member of the Kiwanis Club and the Levelland Chamber of Commerce. He is active in the First Methodist Church in Levelland where he has served as Sunday School teacher and as a member of the board of stewards. For four years, he coached a Little League baseball team, an experience he recalls fondly as his son, Bill, played on most of his teams. For eight years he has been actively participating in Cub Scout and Boy Scout work and served as Cub Master, Assistant Scout Master, and committeeman.

Mr. Wheeler has always encouraged his students to secure a college education, and several of his most talented musicians have pleased him by following in his footsteps, making a career of band direction. He has always had a warm affection and a friendly

relationship with his students evidenced by the fact that many of his former students, now grown and married, return year after year to visit with him and tell him of their families and jobs.

Two events have highlighted the life of Mr. Wheeler this school year . Last October he was surprised and thrilled when the Levelland High School Band and their present director, Mr. Bill Woods, honored him at their half-time performance during one the the high school football games. As former director of this group, Mr. Wheeler was presented with a plaque as a "distinguished service award of 12 years of untiring service." A similar plaque, along with a large framed portrait of himself, were also presented to him to be hung permanently in the Levelland High School bandroom as a tribute and a "thank-you" by former and future band members for the devoted work he has given to this organization. Dr. D.O. Wiley, former director of the Texas Tech College Band and considered to be "Dean of Texas Bandmasters," was there to participate in the ceremonies honoring Mr. Wheeler, a longtime friend.

Another thrill was accorded Mr. Wheeler when his fellow teachers at South Plains College selected him as their male candidate for "Junior College Teacher of the Year."

Mr. Wheeler married his wife, Mary Helen Whatley, in 1934. She is equally interested in South Plains College where she works as Assistant to the Librarian. They have two daughters and a son, and they are all musicians. Sue, now Mrs. <sup>Sue</sup> ~~Ronald~~ Grell, has three

daughters of her own. She attended Eastern New Mexico University in Portales, New Mexico, on a music scholarship. Grace, now Mrs. Thomas Rogers, has <sup>3 sons</sup> ~~a son and~~ a daughter. She graduated with high honors from her father's alma mater, Texas Tech, in 1958 with a Bachelor of Arts Degree in English, and taught briefly in the Lubbock School System. Their son, Bill, is an honor student in the ~~ninth grade~~ in Levelland Junior High School. If asked what his present hobbies are, Mr. Wheeler will smilingly admit to having five of them--his four granddaughters and his <sup>15</sup> grandson. Also well known is the fact that he enjoys photography which mainly involves taking pictures of his five "hobbies."



Sun-News photo WINNIE REID

### Levelland's music man

Wilburn R. Wheeler is the personification of music for many Levelland citizens. His winning personality, talent, versatile arrangements and knowledge of

music and mathematics has earned him a great deal of love and respect from students, teaching associates and most Levelland citizens who know him.

## Residents know Wheeler as 'Mr. Music Man'

When many graduates of LHS or SPC think of music they think in terms of "Mr. Wheeler". Wilburn R. Wheeler was band director in the Levelland High School for twelve years before moving to the music department of South Plains College where he served in the music department and was an instructor in the mathematics department until his retirement.

Wheeler was born in Gilmer, Tex., the son of a Methodist minister. Since the family moved so often Wheeler waited until he moved to Levelland to call any particular place "home".

"The music department of Levelland High School provided me with the most pleasant memories I have ever had," Wheeler said.

The musician played the trombone in his younger years and was a member of the first Texas Tech Band, organized in 1926. When a very young man, Wheeler was a member of the town band of Spearman, Tex.

"I like all types of music. I am especially fond of the sounds emitted during the 'Big Band Era'. Jack Teagarden was one of my favorite trombonists."

"I recall a rather humorous incident regarding Teagarden. When I was teaching down at Rankin, there was a young man in the band whose name was Teagarden. One day he came up to me and said, 'I guess you are familiar with my dad'."

"I asked the young man who his father was. He told me his name was Jack Teagarden."

"Several years ago when Teagarden was in Lubbock for a performance I went backstage to talk to him. I told him who I was, and that had at one time had his son in the Rankin High School Band."

"We had a lovely visit and

I found out all about Jackie—where he lived and what he was doing. Teagarden is one of the nicest people I have ever met," Wheeler said.

When Wheeler was instructor at South Plains there were, at one time, six members of the faculty who had been in his band. Helen Roberts, current drama instructor, was a band member and twirler during the time Wheeler was band director.

"One of the nicest things that ever happened to me took place just before I left South Plains College. Several employes of the college, whom I had taught, found out I was leaving the teaching profession. They set up easels in the hallways at the schools. The easels held newspaper clippings and pictures of all the highlights of my teaching career. On top of this they presented me with a plaque. This I shall always treasure. Some of the ones involved were Helen Roberts, Glenn Pounds, Bill Billingsley, Scott Couch, Mitchell Masters and Polly Parmer. I know Jack Nowlin had a hand in it too," said Wheeler.

Wheeler spent 43 years as an educator in the field of music.

He and his wife, Helen, have three children. One daughter, Mrs. R.H. Gress (Sue) lives in Artesia, N. M. Another daughter, Mrs. Thomas A. Rogers (Grace) lives in Lubbock. Their son Bill lives in Oakmont, Pa. where he is employed by Westinghouse as an engineer. The couple have seven grandchildren and one great grandson.

Helen Wheeler served in the South Plains College Library for 13 years. Shortly before she left she helped with the change over from the Dewey Decimal to the Library of Congress system.

## Scrap iron thefts cleared by officers

Hockley County Sheriff's department, apprehended a subject Wednesday, who had been taking scrap iron and farm equipment that he sold for the going price on scrap iron.

men recovered a set of racing slicks and wheels which were removed from a racing car parked at Frontier Dodge on Nov. 24. Recovery of the tires was made on Wednesday.

In a joint effort the deputies, working with Lubbock County deputies recovered \$300 in money orders which was taken in an armed robbery recently in the

Law enforcement officials apprehended the subject who had been successful in selling

# W.R. Wheeler will be honored by former students and band

The South Plains College Texan Band's Annual Spring Concert Program will be performed in honor of Mr. Wilburn R. Wheeler, former director of the SPC Texan and Levelland High School Bands, May 3, in the South Plains College Auditorium, beginning at 8:00 p.m.

This will be a special date for many former band members of Levelland High School and South Plains College, and Mr. Wheeler is honored for his efforts throughout the years of service to the community.

This outstanding band director and bandsman, conducted the Levelland High School Band from 1946 until 1958, during which time he led his musicians to nine Sweepstakes wins. These bands accomplished these sweepstakes during the ten years from 1949-1958—a fete not likely to be matched again.

In the Fall of 1958, Wheeler took the baton of the South Plains College Texan Band, leading these groups until 1969. At present time, he is serving as Chairman of the Mathematics Department at SPC, an area with which he has also been associated with since 1958.

The public is cordially invited to attend this concert free of charge; however, various persons have been invited to the concert which are for-

mer students of Mr. Wheeler's from SPC and LHS. The concert will be under the direction of SPC Conductor, Jack Nowlin, and the program will begin promptly at 8:00 p.m. in the SPC Auditorium. The program will include musical selections by the SPC Band, guest directing by Mr. Wheeler and recognition of this fine music educator.

Included in the program are these selections: "First Suite in E Flat" by Kimsky-Korsakoff,

"March 'Differente'" by Maxwell, "Selection from Shaft" by Issac Hays, and four selections from Carl Orff's "Cormina Burana" which include "O Fortuna", "Velt Luna", "Eccegratum", "Tanz", and "Were dui werltalle min".

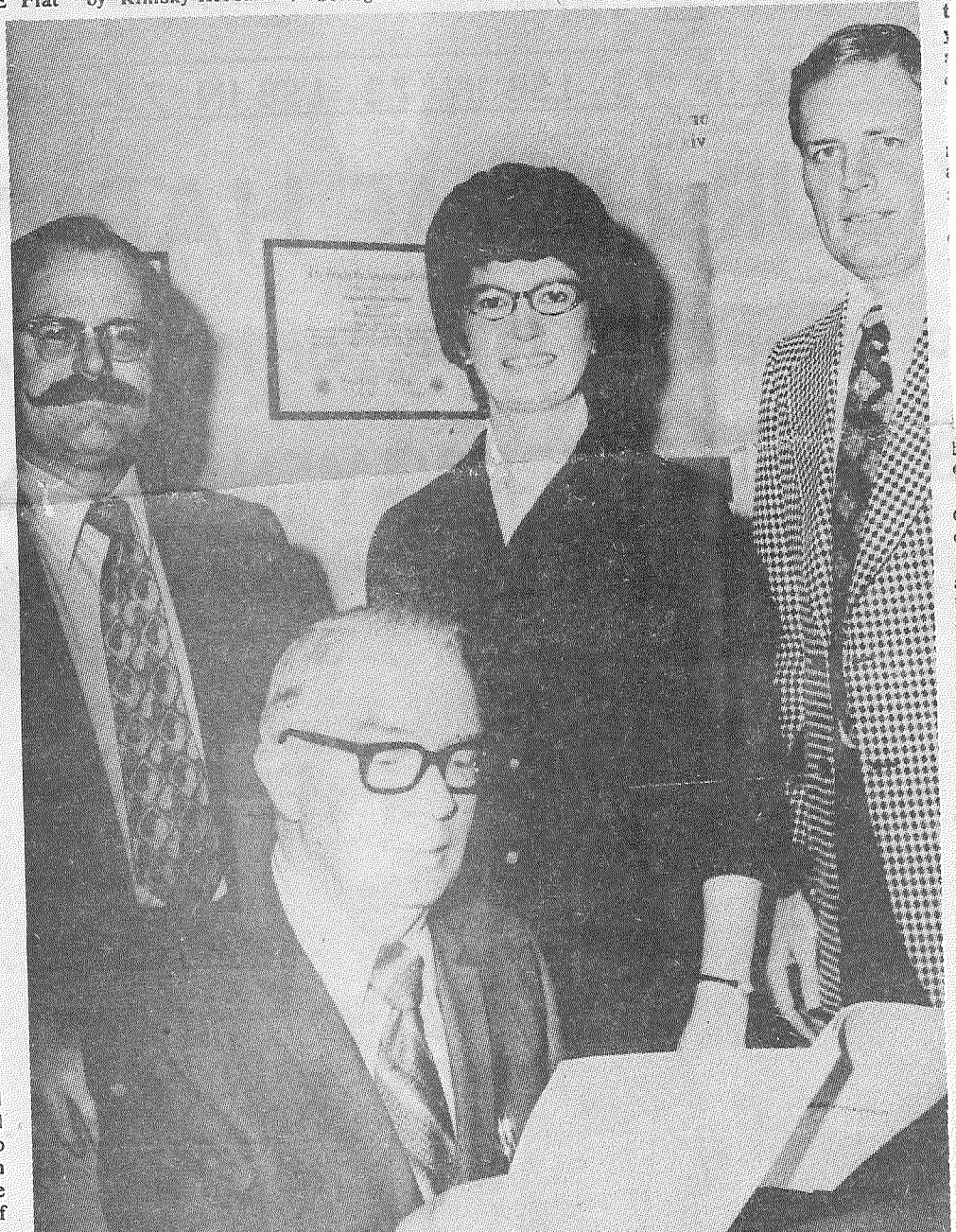
A reception for Mr. Wheeler will be held immediately following the concert in the foyer and in the band hall of the Fine Arts Building at South Plains College.

It is quite difficult for the committee who is contacting former band members to locate all of these people. Therefore, if relatives and friends of these former students would assist in contacting them, they and the committee would greatly appreciate the effort. This committee is headed by Mrs. A Helen Roberts and she is being assisted by Glenn Pounds, Bill Billingsley, Polly Parmer, and T Jack Nowlin.

## Optometric society to meet here

Fourteen area optometrists met Tuesday for the monthly meeting of the South Plains Optometric Society in the offices of Dr. George W. Payne, Sr. and Dr. George W. Payne, Jr.

The monthly society meetings promote continuing education and promote forums for discussions of patient care, optometric and health care legislation, and various other topics relevant to optometry. Optometrists in attendance were: Dr. G.W. Payne Sr. and Dr. G.W. Payne, Jr. of



# Pioneer Teacher Served as First SPC Band Director

By ANN COLLINS

When the doors of South Plains College first opened in 1958, W.R. Wheeler was one of the first faculty members on the staff. He taught mathematics

and was band director for ten years starting with a band which consisted of the following 11 members: Jerry Myatt, tuba; Daniel McClellan, drum; Kay Marlar, drum; Carl Shambur-

ger, drum; Thomas Taylor, cornet; Bob Dwing, cornet; James Love, cornet; Leon Tatham, saxophone; Ronald Claypool, baritone; Alton Macon, saxophone; and Ronald Rhodes, saxophone. Wheeler is now chairman of the College Math Department.

He is a graduate of Spearman High School and received his BA and MS in Mathematics and Master of Education degree with a major in music from Texas Tech. After graduation, Wheeler became principal and coach at Andrews High School and also taught mathematics and was band director at the following high schools before coming to Levelland: Rankin, San Saba, and Freer. He was band director and mathematics teacher at Levelland High School from 1946-1958. During that 12 years Levelland High School Band won nine sweepstakes awards.

Last spring, Wheeler was recipient of the Levelland First National Bank's annual "Excellence in Teaching" award. He was presented an award of

\$1,500 along with an engraved plaque. South Plains College faculty members made the selection.

Wheeler is a member of First Methodist Church, Kappa Kappa Psi, Phi Beta Mu, American Mathematical Association, and Texas Junior College Teachers Association.

His wife, Helen, has been assistant librarian at SPC for the past seven years. She has also attended classes at the college.

His father, Rev. J.A. Wheeler is a retired Methodist minister and long time resident of Levelland.

They have three children and seven grandchildren. Their daughter, Mrs. Ronald Grell, attended Eastern New Mexico University and is currently an assistant teachers aide in Artesia N.M.; Mrs. Tommy Rogers of Lubbock is a graduate of Texas Tech; and their son, Bill, is a senior at Texas A&M where he is majoring in Aero-Space Engineering. All three children are graduates of Levelland High School.

A pioneer teacher at SPC, Wheeler is admired and respected by faculty members and students.



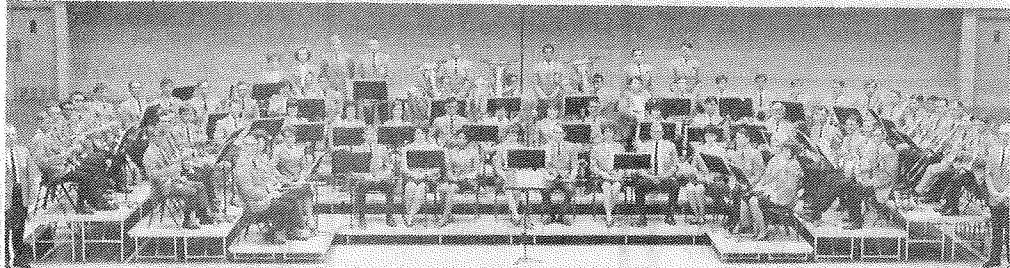
SECOND YEAR SPC BAND—Pictured above are the 17 members of South Plains College second year band. Remember the cowboys hats? — the year, 1959-60. (College Photo)

OCT 8 1968



Levelland Daily Sun-News  
Levelland  
Texas

**PIONEER BAND DIRECTOR**—W.R. Wheeler, first band director at SPC started in 1958 with a band consisting of 11 members, and ending his career as band director in 1968 with a band consisting of approximately 70 members. (Staff Photo)



Geo. C. Price Funeral Home  
1400 Avenue J, Box 517  
Levelland, Texas 79336

**SPC BAND**—Pictured above is the 1968 South Plains College Band. Quite a difference from the 1958 Band of 11 members.













# Wilburn Wheeler to end colorful teaching career

APR 11 1974



The teaching career of Wilburn Wheeler has spanned 43 years--in tiny school houses and college classrooms---as principal, coach, band director, and teacher.

Wheeler, 64, will retire in May from a teaching post at South Plains College, where he joined the faculty in 1958. A faculty and staff reception honoring Wheeler upon his retirement is scheduled for 4 p.m. on Friday (April 12) in the Texan Annex on campus. Hosting the event will be the SPC Faculty Women's Club. He and his wife, Helen, reside at 138 Elgin. Mrs. Wheeler is catalog librarian at the SPC Library.

Wheeler's career began in 1927 as a teacher at the Lubbock County Line School, no longer in existence, and rose to chairmanship of the math and engineering departments at South Plains College.

In between, he has taught at Kerr, Andrews, Rankin, San Saba and Feer before coming to Levelland in 1946. Wheeler was one of two teachers at the Kerr County school during the

Geo C. Price Funeral Home  
1400 Avenue J, Box 517  
Levelland, Texas 79336

LEVELLAND DAILY SUN NEWS  
LEVELLAND  
TEXAS

**MATH TEACHER AT SPC RETIRING AFTER MORE THAN 40 YEARS**—Wilburn Wheeler, chairman of the math and engineering department at South Plains College, will retire in May after 43 years of service in the teaching field. The SPC Faculty Women's Club is hosting a reception in his honor at 4 p.m. Friday, April 12 in the Texan Annex. Faculty and staff at the College are invited to attend. (SPC Photo)

1930s where he taught four grades (fourth through eighth). While at Andrews, he had the triple role of high school principal, math and science teacher and coach.

He was junior high school principal and for the first time, band director at Rankin, teaching there for five years. He later taught high school math and directed the high school bands at San Saba and Freer.

But Wheeler will be remembered most vividly here for his career in Levelland, where he was director of the Levelland High School band from 1946-1958. His band won sweepstakes honors for nine of those 12 years.

For the first 10 years of his tenure at SPC, Wheeler was director of the Texan Band in addition to teaching math. Then, about seven years ago, he was appointed math and engineering departmental chairman.

There are several plaques in Wheeler's office at the College to remind him of accomplishments here. One plaque is an "Excellence in Teaching Award" for 1967-68, presented by the First National Bank of Levelland. Another reminds him of May 7,

1973, "Appreciation Night," in which he was honored by the SPC Texan Band and former members of the LHS band. Seven faculty members at SPC are exes in the high school band.

However, a teaching career wasn't on his mind when he enrolled at Texas Tech University more than 40 years ago. "My big idea was to be an engineer. But the times got a little rough during the Depression. School teachers could get a job and engineers couldn't," he said "I just drifted out of engineering."

But Wheeler does not regret the switch to teaching. "I have enjoyed most of it all the way through. If I didn't I would have quit," he laughed.

Wheeler earned a bachelor's degree in math in 1933 and received a master of education degree in 1949 and a master of science degree in 1963, all from Texas Tech.

Besides Math, music has been a long love in his teaching career. He recalls playing the trombone as a teenager for the Spearman municipal band and later for the Texas Tech and National Guard bands.

His family shares his interest in teaching and music. Brother Marvin Wheeler of Brownfield is

a teacher at Union. A sister Mrs. Mary Frances Rowelette, teaches math at McKenzie Junior High and another sister, Mrs. Lucille Tune, is a private piano teacher, both in Lubbock. A brother John Wheeler is in the farm implement business in Lubbock.

Wheeler's father, J.A. Wheeler a retired Methodist minister, resides at 127 Cactus Drive in Levelland. He is 92.

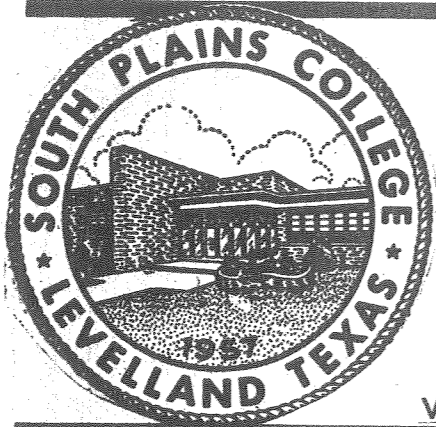
The Wheelers are the parents of two daughters, Mrs. Helen Sue Grell of Artesia and

Mrs. Mary Grace Rogers of Lubbock, and a son, Bill of St. Louis Mo. They have seven grandchildren.

Wheeler is proud of the fact that his oldest grandchild, Sherry Ann plans to enroll next fall as a freshman at SPC.

He doesn't have too many definite plans as yet on what he will do after retirement, "probably do some traveling," he said.

But no matter. Those he has touched through his teaching and music will long remember what he has done.



# THE PLAINSMAN PRESS

VOLUME XVII NO. 14

SOUTH PLAINS COLLEGE, LEVELLAND, TEXAS

WEDNESDAY, APRIL 24, 1974

## Wilburn Wheeler To Resign SPC Post

### Robert Pearce To Assume Department Head Duties

Following the retirement of Wilburn R. Wheeler, Instructor Robert Pearce will become chairman of the mathematics and engineering department at South Plains College. Pearce has taught math at SPC for the past eight years.

Pearce taught math at Levelland High School for two years, then became a teaching assistant at Texas Tech University and taught math at Eunice, New Mexico for another two years before joining the SPC faculty in 1965.

Pearce has a bachelor of science degree from West Texas State University, and a master of education at Texas Tech. He has done graduate work at

Tech, San Jose State, The University of North Carolina, and the University of Houston. He is an associate professor of math and teaches math and engineering courses at SPC.

A native of McKinney County, Pearce and his wife Joy have a son, Mitchell, 9, a fourth-grade student at South Elementary and a daughter Adrienne, 6, a first grader at South.

Pearce is a member of the National Council of Teachers of Mathematics is director of the bus ministry at the First Baptist Church, and is a sponsor of the Baptist Student Union on the SPC campus.



The teaching career of Wilbur Wheeler has spanned 43 years — in tiny school houses and college classrooms — as principal, coach, band director, and teacher.

Wheeler, 64, will retire in May from a teaching post at South Plains College, where he joined the faculty in 1958. A faculty and staff reception honoring Wheeler upon his retirement was at 4 p.m. on Friday, April 12 in the Texan Annex on campus. Hosting the event was the SPC Faculty Women's Club. He and his wife, Helen, reside at 138 Elgin. Mrs. Wheeler is catalog librarian at the SPC Library.

Wheeler's career began in 1927 as a teacher at the Lubbock County Line School, no longer in existence, and rose to chairmanship of the math and engineering departments at South Plains College.

In between, he has taught at Kerr, Andrews, Rankin, San Saba and Freer before coming to Levelland in 1946. Wheeler was one of two teachers at the Kerr County school during the 1930s where he taught four grades (fifth through eighth). While at Andrews, he had the triple role of high school principal, math and science teacher and coach.

He was junior high school principal and for the first time, band director at Rankin, teaching there for five years. He later taught high school math and directed the high school bands at San Saba and Freer.

But Wheeler will be remembered most vividly here for his career in Levelland, where he was director of the Levelland High School band from 1946-1958. His band won sweepstakes honors for nine of

those 12 years.

For the first 10 years of his tenure at SPC, Wheeler was director of the Texan Band in addition to teaching math. Then, about seven years ago, he was appointed math and engineering departmental chairman.

There are several plaques in Wheeler's office at the College to remind him of accomplishments here. One plaque is an "Excellence in Teaching Award" for 1967-68, presented by the First National Bank of Levelland. Another reminds him of May 7, 1973. "Appreciation Night," in which he was honored by the SPC Texan Band and former members of the LHS band. Seven faculty members at SPC are exes in the high school band.

However, a teaching career wasn't on his mind when he enrolled at Texas Tech University more than 40 years ago. "My big idea was to be an engineer. But the times got a little rough during the Depression. School teachers could get a job and engineers couldn't," he said. "I just drifted out of engineering."

But Wheeler does not regret the switch to teaching. "I have enjoyed most of it all the way through. If I didn't, I would have quit," he laughed.

Wheeler earned a bachelor's degree in math in 1933 and received a master of education degree in 1949 and a master of science degree in 1963, all from Texas Tech.

Besides math, music has been a long love in his teaching career. He recalls playing the trombone as a teenager for the

See WHEELER Page 4

### Parking Tickets Must Be Paid Before Exams

Those listed below will not be able to take their final exams without paying their parking tickets. Delinquent violations are as follows.

Harrell, Robert Hays, Dana Henderson, Jimmy Henderson, Ramaldo Hinjosa, Jacky Hill, Dough Howell.

Danny Jackson, Mamie Jackson, Masque Johnson, John Joseph Perry



# rested ork



BURKS

## Wheeler To Direct College Band-

(Continued from Page One)  
celebration at San Antonio for three years.

Wheeler has taken his band groups to State Fairs, several State Band Festivals at Enid, Okla. and nearly every local function Levelland has had.

Wheeler and his band have played and marched at every football game Levelland has played except one since 1946. The one they missed was a game in El Paso.

Born Oct. 6, 1909, Wheeler is the son of a now retired Methodist minister, Rev. J. A. Wheeler, Rev. Wheeler, who is often a minister of visitation at the First Methodist Church here, lives with his wife at 126 Cherry.

Wheeler's father came to Texas from Alabama and taught school several years in East Texas Normal College at Commerce. Rev. Wheeler traveled through much of north and west Texas in his 40 years as a minister.

Wheeler, his two brothers and two sisters, enrolled and withdrew from many schools before their graduation. Wheeler began school at Ravenna, near Bonham, and attended seven schools before he graduated from Spearman High in 1926.

Besides his interest in the town band, Wheeler was an avid photographer and worked for a portrait studio during high school. He kept up with his hobby until about 1946, when his band work became too time-consuming.

Wheeler enrolled in Texas Tech in the fall of 1926 and the second semester transferred to McMurry College in Abilene. With the one year of college, he got his first teaching position at a rural school in Lubbock County.

Eighteen-year-old Wheeler taught science and math in the rural high school and several fourth grade subjects.

The next summer and fall he worked in a drygoods store at Turkey. Later, he transferred to Tech and graduated in 1933 with a B.A. degree.

Wheeler's first teaching job after his graduation was as high school principal, mathematics instructor, football and basketball coach at Andrews High School.

"I only got \$100 a month for the four-jobs-in-one," says Wheeler, "but at that particular time, I was glad to get it."

During his Tech days, Wheeler was a member of the National Guard band and also played with

the first grade. 42 students, didn't speak English and 11 other students attending a school in on her. The lady was unward me. She of us in one

he entered the was a radar-S. S. Begor in the South charged after ned to Tech, or a summer Navy. ring in chem-ology, and tion to stay. longed to the st president b, vice pre- Teachers and dancing how before icity editor ved his BS 1950 and

he worked building Lips Refiner-ber Plant line crew service. Burks was at Tech er from His mo-d.

was a August ng here s have on, 3 1/2 grade ary. ership rs As- ed his -state Coun- Kappa n fra- l Ed- audio- was

Lock-stra-

a band at McMurry.

Wheeler's brother, Marvin, who is now principal at West Elementary here, usually played as drummer in the same band as Wheeler.

In the summer of 1934, Wheeler went to a National Guard camp at Mineral Wells and met his wife, Mary Helen Whatley, who was staying with the band director's wife there. The couple married and returned to Andrews for the fall school term.

Wheeler's first experience as a band director came in 1935 when he moved to Rankin as junior high principal and began organizing a band there.

"We really started from scratch" Wheeler remembers. "Most of the kids had never seen a musical instrument; but before long we had a 40 or 50-piece band, new uniforms, and the kids could play pretty good."

Wheeler's initial first place win at a contest came in 1940 when he went to San Saba as band director and math teacher. The band received a first division in Class B at an Abilene contest. The next year, Wheeler's group won a first division in marching at a national regional contest.

After two years in San Saba, Wheeler moved to Freer, in Duval County, as high school director in a school of about 250 students.

Freer is right in the middle of political boss George Parr's territory and Wheeler recalls that even during the war in Duval County, which has been in the state and national spotlight the past few years.

Wheeler spent one year in the Navy while his family remained at home.

"I was the only music teacher in the school system in 1946," Wheeler recalls, "and we had about 50 band pupils that first year. All the kids were beginners outside of about 15 who had played before."

Since his first year in Levelland, Wheeler has become well-known for his constructive and patient work with Levelland's children.

His two daughters, Sue (now Mrs. Ronald Grell) and Gracie (Mrs. Tommy Rogers) were members of their father's band during their school years. Sue was a majorette in the band and played clarinet. Grace, who graduated in 1955 and is now attending Texas Tech, was drum major her senior year and played flute.

Besides his work nine months every year with the high school band, Wheeler now teaches summers at the Tech band school. He received his masters degree from Tech in 1949.

"My main hobby now is Little League baseball," says Wheeler. He is one of the managers of the Indians team and his son, 11-year-old Bill, plays with the Little League.

Wheeler is also instructor of a Sunday School class — the young adult group — at the First Methodist Church. A former member of the Lions Club, he is now a Chamber of Commerce member, and — chairman of the Region I Texas Music Educators Association. He has been Cub Master of Pack 109 for the past two years.

He is honorary member of Kappa Kappa Psi, national band fraternity and Phi Beta Mu, national band master's fraternity. The Wheelers have one grandchild, Sheri Ann Grell, who is one and a half years old.

R  
In  
Er

SECTION EIGHT

The Levelland Daily Sun Ne

PROGRESS EDITION

SUNDAY, MAY 18, 1958

COLLEGE STAFF: W. R. WHEELER

CO

Top Director To Head Band

A man who has proved himself in two vastly different fields of educational endeavour will di-

rect the South Plains College band when the institution opens its doors to students for the first time on Sept. 15.

He is W. R. Wheeler, who has directed the Levelland High School band to nine regional music competition sweepstakes awards in ten consecutive years of competi-

tion. Besides being a top musician, Wheeler is also a whiz at mathematics, and as a result, he will also serve as a part-time instructor of math at the college while the college band is in its organization stages.

A band director and organizer since 1935, Wheeler has always possessed a great love for music and for children — a combination which he has used to bring a great deal of recognition to Levelland through its prize-winning high school band.

Playing in the high school band is not only an enjoyable extracurricular activity, but a character building one, as well.

"The main thing we do in band work is try to train students to be good citizens through their music," Wheeler said. "We don't try to train every student for a professional career in music, because many of them are not meant for such a career."

On the other hand, for any student who feels that he wants to make some phase of music his life's work Wheeler is the first to encourage and offer a helping hand.

Several of Wheeler's former band students are now band directors and more are studying in college for that profession.

Wheeler's band days began when he was in high school, playing with the town band. High school bands were a rare thing in the 1920's, but everyone had an opportunity to play in the town band.

"Businessmen, high school students, and even housewives joined in the weekly concerts downtown," Wheeler remembers. The "band director" of the first town band Wheeler played with was also owner of the local produce house.

Wheeler's musical career began with the trombone and although he has mastered nearly every instrument now used in the band, the trombone remains his favorite.

While playing with the town band in Spearman, Wheeler attended his first band contest at the Tri-State Fair in Amarillo.

Since that time Wheeler and his band students have walked away from many contests with the top Sweepstakes award. In 1949, Wheeler and his group of Levelland band students won the first Sweepstakes award for their school — and one every year after except for one.

The Levelland band has become known as one of the finest in the state and has received recognition at the annual Battle of the Flowers

(Continued on page two)



W. R. WHEELER

EXPERIENCE PROGRESS!!

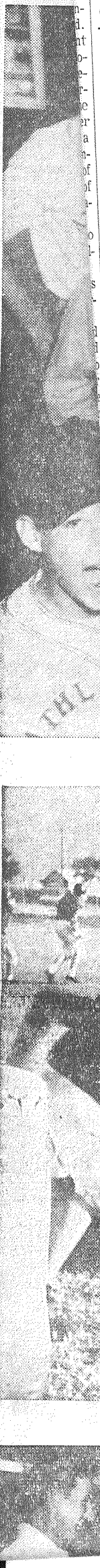
Carl Woodson  
8 Years  
Owner and Operator

Mary Ruth Woodson  
8 Years  
Accounting and Sales

Carlton Woodson  
2 Years  
Assistant Manager and Sales

Orel Moore  
10 Years  
Car Washing and Polishing

Sim Saunders  
12 Years  
Lubrication Experience



# Teaching Award Goes To SPC Instructor

Wilburn R. Wheeler, South Plains College band director and chairman of the college Math Department was the recipient of the Levelland First National Bank's fourth annual "Excellence in Teaching" Award.

The award of \$1,500.00 along with a plaque was presented Wednesday at 4 p.m. by Hobart Lewis, president of the local bank.

Other recipients of the coveted award have included Earl Erstenberger in 1965, Don Arling in 1966 and Don Stroud in 1967.

South Plains College faculty members who made the selection and members of the administration were on hand to offer congratulations to Wheeler.

He has been with the college since its opening in the fall of 1958 and has seen SPC grow from only a few members to 61 members this year. Wheeler is also conducting a band course in the evenings for adults in the community.

Wheeler received BA, M. Ed., and MS degrees from Texas Tech and began his teaching career as a principal and coach at Andrews High School. He also taught band at Ranking, Saba and Freer before coming to Levelland High School as band director in 1946.

He was at LHS until 1958 compiling a successful record in winning the sweepstakes band award for most of the years he was there.

Wheeler is a member of the First Methodist Church, Kappa Kappa Psi, Phi Beta Mu, American Mathematical Association, Texas Junior College Teachers Association.

Mr. and Mrs. Wheeler are parents of three children, S. R.H. Grell, of Artesia, N.M.; Mrs. Thomas A. Rogers, of Amarillo.



SPC INSTRUCTOR RECEIVES TEACHING AWARD—Wilburn R. Wheeler, South Plains College band director and chairman of the college Math Department, left, accepts an "Excellence in Teaching" award from Hobart Lewis, president of First

National Bank while Dr. Marvin L. Baker, center, president of the college looks on. The award is the fourth made by the bank since 1965. (Staff Photo)

## TO DEBATE

# Carr Issues Challenge To Yarborough

By United Press International sionals that know how to do it." he would make a reduction in top projects. "I will appoint a

Of Apr 10 1968

By United Press International Vice President Humphrey, still for signs his pro would be a win up more high-le his still unlaun

Wilbur Cohen signate of health welfare, and N Gov. John W. K support to th presidential bo

Cohen was th officer to endo joining Labor Willard Wirtz a Secretary Orvill Outgoing Postmas Lawrence F. O Robert S. McNamara endorsed Sen. Robert F. Kenn dy.

The new HEW chief laude Humphrey as "a great man wh" SEE CANDIDATE PAGE 12

## Soft Ball Program Scheduled

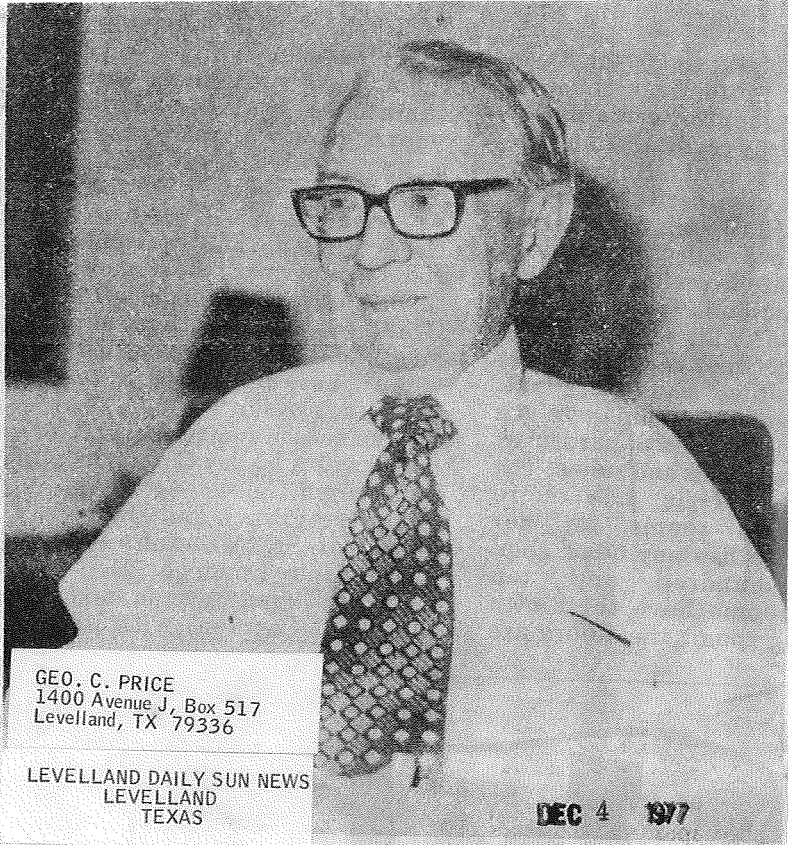
An organizational meeting has been announced by Melvin Kunkel, who along with his wife serves as treasurers for the Summer Softball program for girls.

The meeting has been slated for 7:30 p.m. in the Reddy Room Monday, April 29.

New officers will be elected during the meeting.

Last year the program included approximately 14 teams with 12 to 14 girls on each team. The girls practice at various spots in Levelland and schedule tournaments during the six weeks program.

The program is in need of coaches and managers and anyone interested in assisting the softball program is urged to



GEO. C. PRICE  
1400 Avenue J, Box 517  
Levelland, TX 79336

LEVELLAND DAILY SUN NEWS  
LEVELLAND  
TEXAS

DEC 4 1977

Sun-News photo WINNIE REID

## Levelland's music man

Wilburn R. Wheeler is the personification of music for many Levelland citizens. His winning personality, talent, versatile arrangements and knowledge of

music and mathematics has earned him a great deal of love and respect from students, teaching associates and most Levelland citizens who know him.

# Residents know Wheeler as 'Mr. Music Man'

When many graduates of LHS or SPC think of music they think in terms of "Mr. Wheeler". Wilburn R. Wheeler was band director in the Levelland High School for twelve years before moving to the music department of South Plains College where he served in the music department and was an instructor in the mathematics department until his retirement.

Wheeler was born in Gilmer, Tex., the son of a Methodist minister. Since the family moved so often Wheeler waited until he moved to Levelland to call any particular place "home".

"The music department of Levelland High School provided me with the most pleasant memories I have ever had," Wheeler said.

The musician played the trombone in his younger years and was a member of the first Texas Tech Band, organized in 1926. When a very young man, Wheeler was a member of the town band of Spearman, Tex.

"I like all types of music. I am especially fond of the sounds emitted during the 'Big Band Era'. Jack Teagarden was one of my favorite trombonists."

MAY 5 1973



Geo. C. Price Funeral Home  
1400 Avenue J, Box 517  
Levelland, Texas 79336

Levelland Daily Sun-News  
Levelland  
Texas

**BAND DIRECTOR HONORED:** Winburn Wheeler (center) longtime director of bands at Levelland High School and South Plains College was recognized during this year's annual Texan Band Spring Concert, May 3 at the college. Wheeler was presented a special plaque and framed portrait by former band members Mitchell Masters, Levelland, (left) and Charles Watson, Hereford (right). A special reception for Mr. Wheeler followed the concert program in the foyer of the Fine Arts Building at SPC. A number of Wheeler's former students were on hand for the special presentation. (SPC Photo)



## *Band director honored*

Former Levelland High School band director Wilburn R. Wheeler, left, receives a portrait of himself from close friend Earl Ray of Lubbock, also an ex-band director. Prof.

D. O. Wiley, director of the Tech band for many years, applauds at right.

(Staff Photo by Bud Guess)

# Band pays tribute to Wheeler

LEVELLAND HIGH SCHOOL'S band surprised former director W. R. Wheeler, now band director and math teacher at South Plains College, with a special tribute at half-time at the Hereford football game Friday night.

While public address system announcer Roger Lawton read biographical material, the band formed an "AHS" for Andrews High School, where Wheeler was formerly a coach and teacher.

**THE FORMATION SWITCHED** to an "LHS" as Wheeler's role in bringing prominence to the Levelland band was cited.

The nine sweepstakes awards and other honors achieved by the band under Wheeler's direction were outlined.

**WHEELER MADE THE LONG** walk from the stands onto the field after his name was announced, where he was presented a protrait of himself, which will go up permanently in the Levelland band hall. The presentation was made by an old friend and ex-band director, Earl Ray.

Former Tech Band Director D. O. Wiley, on hand for the event, directed the band during the ceremony in two numbers, one of them "Everything's Coming Up Roses."

Wheeler directed the band, which he had headed for so many years, in the Levelland school song as the tribute drew to a close.

**BAND OFFICIALS SAID THE** tribute caught the former director "completely by surprise."

Band director Bill Woods, the third director of the local band since Wheeler resigned to join the local college faculty in 1958, said before the tribute that he was simply surprised that it hadn't been done previously.

He pointed to Wheeler's record as one which would be almost impossible to match.





TEXAS TECHNOLOGICAL COLLEGE  
LUBBOCK, TEXAS

May 4, 1949

Mr. W. R. Wheeler, Director  
Levelland High School Band  
Levelland High School  
Levelland, Texas

Dear Sir:

The Concert Band of Texas Technological College, Lubbock, Texas, is proud of you and your band for your Honor Rating at the Region I Interscholastic League Contest, 1949.

In showing our congratulations, we would like to extend an invitation to you and your band to be our Special Honor guests at our Annual President's Concert, Monday evening, May 9, at 8:00 P.M. at the Lubbock Senior High School Auditorium.

This is our final Spring Concert of the 1948-49 season at which time we honor our President of the College.

Your band will be one of three special guests invited to the concert and we would like to have your band attend in uniform,

If you can accept our invitation please let us know as soon as possible so we may make arrangements.

Please accept our sincere congratulations.

*Wayne McDonald*  
Wayne McDonald, Pres.  
Kappa Kappa Psi  
National Band Fraternity

Sincerely,  
*D.O. Wiley*  
D.O. Wiley, Dir.  
Tech Bands



WEST TEXAS STATE BANDS

WEST TEXAS STATE COLLEGE

CANYON, TEXAS

THE BUFFALO MARCHING BAND  
THE CONCERT BAND  
THE COLLEGIANS

May 6, 1949

Music Directors  
Region I High Schools

Dear Fellow-Directors:

Another Interscholastic League music competition year is completed, and while the contests are still fresh in your minds there are several things which I should like to mention to you.

First, I want to compliment every director who attended the contests on the department of his or her students. In the three and a half days of competition, not a single complaint was heard about misbehavior of any of our guests. That in itself is evidence of the fine work you are doing.

Also, I would like to tell you how much every one of us here at West Texas State College appreciates the chance we have had to be of service to you. We have done our best to administer both contests in the way that seemed most beneficial to you. We have learned a lot; and, if our Executive Committee sees fit to allow us to be your hosts again next year, we believe we can do still better.

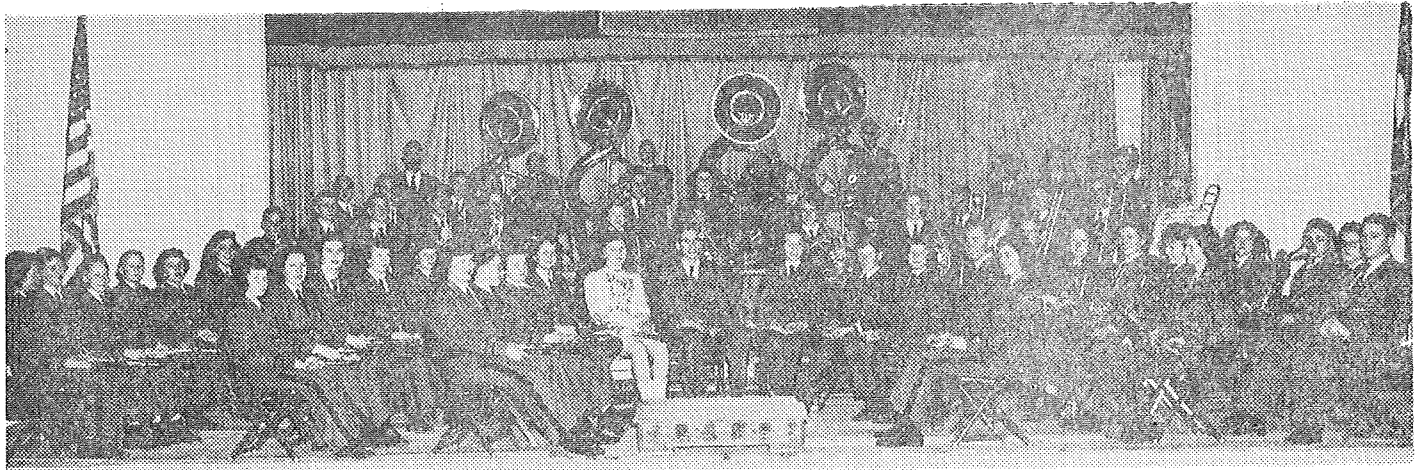
In regard to the improvement of future competition-festivals, I wish to ask a favor of every director in Region I. I am prepared and willing to make a number of recommendations to our Executive Committee, but before doing so I would like to know your opinion on each item. Will you please, at your earliest convenience, fill the enclosed sheet with your ideas and return it to me?

Thank you for the splendid cooperation we have received this year. Our work with the contests has been a distinct pleasure, due mostly to the directors who participated.

Sincerely yours,

  
M. J. Newman

*Congratulations to you and that superb band !!*



# Levelland High Band Has Won Respect of Community

by

Jerry Johnson, Secretary

Three years ago the band program of Levelland was re-organized under the direction of W. R. Wheeler. During this time the band has grown steadily and through its achievements has won not only the support of the school administration but of the citizenship of Levelland. Due to this fine support the band has acquired many needed instruments, a good library, and ninety wool uniforms.

Beginning in September our High School will be housed in a fine new building. The Lobo Band will occupy new quarters in this building consisting of a large accoustically treated rehearsal room, six practice rooms, library, office, and store rooms. The Junior High school band, under the direction of Burl Harris, will occupy the present band hall.

In April, 1949, the Levelland High school band was the only Class A band in Region I to receive the prized sweeps'take award, which is given only to bands making first division in concert, sight-reading, and marching. In addition to these awards the members of this band received 13 first division medals and 33 second division awards in solo and ensemble competition.

The band presents several public concerts, plays for all football games, and is called upon to participate in parades and many civic affairs.

Our school furnishes transportation to enable band students to at-

tend the Texas Tech Summer Band school each summer. Thirty-five members of the band attended this past summer.

There are approximately 200 students in the band program of our school. The senior band last year numbered 60 members but is expected to number over 80 this year. We expect also to have a large Junior High band and many more beginners.

Our director, Mr. Wheeler, is a graduate of Texas Tech and received his Master's Degree from the same institution in 1949. He has had other fine bands but says that the

Levelland Band is the best. The students, the parents, the school and the town are very proud of the Levelland Lobo band.



W. R. WHEELER  
Director

**STANBURY UNIFORMS** Choice of America's Leading School Bands

for **QUALITY-STYLE-SENSIBLE PRICE**

featuring the Revolutionary **NEW**

**Stanbury YEAR-YEAR FITTING SYSTEM**

Conventionally tailored uniforms that can be refitted to your band each succeeding year without loss of style, beauty, and without expensive alterations. An exclusive Stanbury development. Write for complete details.



**Available in Woolen and Cotton Fabrics**

Let Stanbury design your new uniforms in the latest style and color in either Woolen or Cotton Fabrics. Low Prices. Prompt shipments.

Write for Complete Details

**STANBURY & COMPANY**  
210 West 8th St., KANSAS CITY 6, MO.

THE TEXAS MUSIC EDUCATOR

1949

# Wheeler Honored At Band Banquet

In The **SUN**  
A Day

By **ORLIN BREWER**  
A boy who works hard and his lessons, according to the final theory, always wins out in the end.

But it didn't work out that way at City Hall Monday night.

The city council prepared to sell Levelland's remaining paving bonds and two bond men, familiar figures at public school, county, college and city governmental meetings came to the session without figuring their bids in advance.

Howard Kenyon of Rauscher-Pierce Co., whose company won fiscal agency for the college, left the council chambers and tediously figured out his retirement schedule and bid to the last decimal point.

Bob Davis of Columbian Securities, walked out, wrinkled his brow and grabbed a bid figure "out of the air."

ooo

Back in the council chamber a few minutes later, the council opened Kenyon's sealed bid first. When the 2.68 (per cent interest charge) bid of Rauscher-Pierce was read out, Davis virtually died laughing.

The puzzled Kenyon turned to Davis and asked, "What did you bid, Bob?"

"Two sixty-seven," Davis replied. The 2.67 bid meant that Columbian Securities which has bought every city bond since 1946, had done it again. The one-hundredth of one per cent difference did the trick.

A third bidding company, First of Texas, bid 2.78 and was out of the running.

ooo

Mrs. Orville Bynum, who lives three miles northwest of Levelland on the Oklahoma Flat road, is digging up a large quantity of Chrysanthemums.

It runs against her constitutional love for flowers to throw them away so consequently he'd like to give them to somebody who would appreciate them.

Anybody interested is invited to contact Mrs. Bynum. Her phone (DAY IN THE SUN—Page 2)

Members of the Levelland High School band paid a farewell tribute to the most successful band director in Levelland Public School history at their annual banquet, Monday night, sponsored by the Senior Band Parents Club.

Director W. R. Wheeler is leaving the public school system to become band director and math instructor at South Plains College.

Bands directed by Wheeler have won nine Sweepstakes awards since he had headed the band program, missing the honor by the barest fraction on only one year.

The group will go after the tenth Sweepstakes for a Wheeler-directed band this coming Saturday in sight-reading and concert competition at Monterey High School in Lubbock.

Banquet decorations followed a "bon voyage" theme and Wheeler was presented four shirts by the sponsoring band parents.

Sharing the spotlight with the director, were graduating seniors, who recounted experiences during their years with the band.

The band will lose 24 members through graduation at the end of the current year. They include:

Gloria Blakley, Nancy Burelsmith, Sue Copeland, Davie Mac Costin, Jerry Cox, Eddy Curry, Jerry Dison, John Dupre, Rosabeth Gilmore, Lutine Harris, Nina Haven, Frank Lawlis, Alton Maccon, Mike Metze, Jerry Myatt, Billy Rutherford, Carl Shamburger, Lynn Sherrod, Richard Shirley, Tom Spencer, Mac Tubb, Nita Woodley, Carolyn Poindexter and James Peeler.

Dison served as master of ceremonies for the banquet, sharing the head table with Band Parent President and Mrs. Bob Roberson, Mr. and Mrs. Wheeler and the incoming president, Mrs. L. L. Miller.

The Saints of Dixieland provided musical entertainment.

Costin presented the invocation and Lynn Sherrod the benediction.

## 18 Hurt in Texas

# Tornado Tears Child from Arms Of His Mother

MIDLOTHIAN, Tex. (P) — Writhing erratically, a tornado smashed farm houses, injured 11 persons and snatched a small boy from his mother's arms late yesterday.

Gary Froning, a chubby 2-year-old, was sucked from his collapsing home and whirled 50 yards into a pasture as the twister slashed back and forth across a dozen square miles.

Although debris fell all around him, the youngster suffered only a cut chin.

The tornado, which swept across the farm area south and east of this central Texas town, apparently scored a direct hit on the four-room frame home of George Froning, six miles southeast of Midlothian.

Another tornado struck about two hours later near Marlin, about 90 miles south of here. It tore up barns and uprooted trees. Damage was heaviest on the J. E. Roberson, Richard Liecke and Danny Shook farms.

"It was raining so hard you couldn't see, but we didn't know anything about a tornado coming because of the noise from hail pounding on the tin roof of our sun room," Froning said.

"Then a window blew in, and my wife and I grabbed the children."

Mrs. Froning pushed the little boy to the floor and lay across his body protectively.

"All I could think of was my little boy in my arms, she said. "Then I felt the wind lifting us, and I couldn't hold onto him any longer."

Froning and his daughter Gloria, 7, were in the kitchen. She crawled under a table, and that saved her life.

After the storm passed on, Froning picked himself up 100 feet west of where only the foundation of the house remained. He had a head cut.

In requiring the petition council stated it would show residents are interested issue and it also will indicate at least 200 persons in the will have some knowledge issue, thus assuring a family vote.

The issue arose recently four Levelland postmen — Williams, Owen Carter, Stephenson and Gene War appeared before the council to request that some action be taken on straying dogs.

The council also decided to adopt the Levelland Public plan of equalization on tax subject to City Attorney Frank examination of the tax engineering contract with the school to determine whether the city would be deterred from using the plan. If the plan is adopted the council voted to check individually each piece of property in the city so there would be no question on equalization.

In line with this latter action the board re-appointed a three-member board of equalization — Conatser, R. J. Dison and Boley.

The city tax rate will not be as high as the school's as it is a 25 per cent base, where the school's is on a 30 per cent base.

In other action the board

(1) Heard two representatives W. C. Glover and J. A. speak in behalf of a residence on East Jefferson Street who are asking paving for the thoroughfare and a third, Mitt Dowlen, representing residents of Avenue are seeking paving from 15th Street to 15th Street. In each case the groups lacked one person having 100 per cent participation on their petitions and the council advised them to seek to complete the roster and appear before the Council again on May 5.

(2) Reheard Doug Sam

(CITY COUNCIL—Page 2)

## Latin Youths Still

# Stiff Bo In Cour

Bonds were set Monday for Latin - American youths from Anton - Roundup area who

# Collision of Airliner, Jet Fighter Shows Air Space Control Problem

LAS VEGAS, Nev. (P) — In Washington, D.C., the Civil Aeronautics Board discussed the problem of air space control. At the same time, on the Nevada desert, the wreckage of an airliner gave dramatic evidence of the problem.

The United Air Lines DC7, carrying 47 persons, collided with an Air Force F100 on an instrument training mission near Las Vegas yesterday at 21,000 feet. It was a clear day.

Two men were in the F100. All aboard both planes perished.

On the airliner were a number

of prominent businessmen. Also aboard was an inventor whose creation was designed to help prevent the thing that killed him.

The airliner was bound from Los Angeles to New York.

The F100 was on a 1½-hour mission out of Nellis Air Force Base near Las Vegas. Aboard the dual-control plane were an instructor and a student pilot, the latter sitting toward the rear under a hood, where he could fly the craft by instruments with no outside vision. The instructor was not hooded.

The F100 was given permission by Nellis to make its descent instruments.

About two minutes late 8:30 a.m., the planes met.

Just after the collision picked up the aviator's call—"mayday."

A frantic call also was received from the stricken airline pilot said: "United Air Lines (flight number). Mayday. collision over Las Vegas. 7 more was heard."

Brig. Gen. James C. M (AIRLINER, JET—Page 2)

**At The Theatres TODAY!**  
**The WALLACE**  
DON'T GO NEAR THE WATER  
with Glen Ford  
**SPADE Drive-In**  
**THE TEAHOUSE OF THE AUGUST MOON**  
with Marlon Brando

# LHS Band Cops

## Sweepstakes For Tenth Time

The Levelland high School band copped Division I ratings in sight reading and concert Saturday in the district contest at Lubbock to win Sweepstakes honors for the tenth time in 11 years for Lobo bands directed by W. R. Wheeler.

Wheeler is leaving the Levelland system at the end of the current school year to take over the band director's post at South Plains College.

The one Levelland band in the past 11 years which did not win a sweepstakes award lost by only a small margin. The first year, he was in Levelland, Wheeler's band also failed to win sweepstakes.

The Levelland Junior High musicians, directed by Don Eiring, almost made the sweepstakes list for the first time, but a Division II rank in marching prevented achievement of the honor. However, the band will receive a plaque in honor if its I ratings.

The high school band shared the spotlight with Littlefield as the Lamb County group also won a Sweepstakes Award. The Littlefield

# Band Meet-

(Continued from Page One)  
senior group by nabbing three Division I ratings.

In high school competition, Brownfield achieved Division II rankings in sight reading and concert. However, two Brownfield student conductors, Mary Brownfield and Sue Shumaker, received Division I rates.

The Sundown Junior High organization won a Division II rating in sight reading and Division III in concert. Brownfield Junior High had II ratings in each.

## MEMBERS

La Rue Gillmore  
\*Bobby Hugill  
James Johnson  
\*Maurice Nunley  
Barbara Shamburger  
Hazel Wheeler  
\*Sue Wheeler  
\*Gerald Don Abel  
Jimmy Black  
Larry Cook  
Don Copeland  
Lynn Dudney  
\*Freddie Lowe  
Mitchell Masters  
Marshall Metz  
Phil Phillips  
Leighen Railsback  
Jackie Reynolds  
Wayne Tompson  
\*Charles Watson  
Jimmy Yeary  
Roe Ann Adams  
Richard Bailey  
Lucinda Birtciel  
Sue Jo Cole  
Scott Couch  
Charline Didway  
Donald Gillispie  
Laura Hamill  
Margaret Johnson  
Marvene Landers  
Polly Ann Kennedy  
Nancy Lawlis  
George Marcom  
Richard Miller  
Dwight Pounds  
Kay Russell  
Charles Simon  
Sarabeth Simpson  
Julia Terry  
Charles Turpen

Dick Haynes  
Ronald Brock  
Tommy Drinkard  
Anita Awbrey  
Peggy Brown  
Sammie Cox  
Janelle Hamill  
Jerry Holt  
Sherrill Horn  
Patsy Lincoln  
Ray Martin  
Danny Mitchell  
Betty Morton  
Mae Petty  
Olen Petty  
Jerry Pickens  
Gene Ray  
Travis Shoffners  
Fred Spears  
J. L. Turnbow  
Dan Vasquez  
Gracie Wheeler  
Patsy Awbrey  
Janelle Sinclair  
Bill Billingsley  
Barbara Blair  
Ronnie Brown  
Sandra Brown  
Walter Didway  
Ann Dupre  
Wayne Durham  
Eddie Harris  
Rose Holman  
Mary Helen Jones  
Marilyn Marcom  
Sandra McGuire  
Joe Nipper  
Sherrill Pounds  
Nick Vasquez  
Oliver Watson  
\* Officers

## HISTORY of BAND

In the year 1946, W. R. Wheeler moved to Levelland to undertake the job as high school band director. There were approximately ten kids that knew how to play. That year the band went to contest at Pampa and came out III in concert, III in sightreading, and II in marching. There were around sixty kids that participated in that contest. In the year 1947 the band grew to 70 and went to contest at Canyon, coming out II, I, II. In 1948 the band had about 80 kids in it and again they went to Canyon, coming out with their first Sweepstakes. In 1949 the band made Sweepstakes again and got to go on their first big trip—the State Fair of Texas. In 1950, '51, and '52, the band made Sweepstakes awards a regular tradition for the Lobo band. In 1951 the band went to Enid, Oklahoma, for the Tri-State Band Festival, and in 1952 the band went to Dallas again for the State Fair.

Now the Levelland band is known all over Texas as one of the best, thanks to the wonderful cooperation of the band parents club and our wonderful director.

# Top General Killed In Viet Nam Action

IGON, South Viet Nam (AP) — Trinh Minh The, top Cao Dai general and one of the chief supporters of the free Viet Nam Revolutionary Committee was killed in action tonight.

His death was disclosed a short time after hard-hitting troops of the Cao Dai religious sect joined the Nationalist army of Premier Ngo Dien Diem in an offensive against the Binh Xuyen rebels.

Gen. The's Cao Dai forces were once allied with the Biny Xuyen Society and the Hoa Hao Sect in a united front demanding Diem's resignation. But the general switched sides three months ago when Gen. Le Van Vien, the Binh Xuyen leader, rejected demands that armed struggle be avoided.

Gen. The had thrown four battalions of his troops, perhaps 2,400 men, to Diem's support in mopping up Vien's battered force of 2,000 men on Saigon outskirts.

He died while directing the battalions in this action.

The Cao Dai general was fired upon by Binh Xuyen commandos in an armored motorboat and died instantly.

This blow to the armed forces supporting Diem came as the premier was marshalling all his support for a political victory over Diem.

The Premier formally convoked the states general an assembly of political party representatives and municipal and provincial officials to pass judgment on the National Revolutionary Committee's weekend recommendation to depose Bao Dai. The assembly was called to meet in Saigon tomorrow.

In a nationwide broadcast, Diem said the national army also would have voice in the final decision on the committee's recommendations. Both the states general and the army were expected to approve the ousting of the playboy ex-emperor, who has been living on the French Riviera for the past 13 months.

The demands for Bao Dai's deposition followed his cabled order last week for Gen. Nguyen Van Vy, a supporter of his, to supplant Diem. The army refused to follow Vy, who scurried back to the hill resort of Dalat.

Reports of new French support and renewed U.S. backing bolstered the Premier. French offi-

cialists in Paris said last night that their government and the United States are prepared to "sacrifice" Bao Dai if his removal would promote stability.

In Washington, Henry Suydam, chief State Department press officer, told newsmen the United States "continues to support the legal government of free Viet Nam" headed by Diem. He re-

(Continued on page five)



W. R. WHEELER  
... He Turns Out Winners

## Individual Local Winners Listed

# Top Awards Becoming Habit with Wheeler

Sweepstakes awards — the highest rating in Interscholastic League musical competition — are becoming tradition with bands directed by W. R. Wheeler, genial bandmaster at Levelland High School.

Levelland band students were back in classes again Monday with their seventh consecutive sweepstakes rating under their belts after competing in Plainview Saturday.

Wheeler came to Levelland from Freer, Tex., in 1946 and turned out his first Sweepstakes band in 1949. Since that time, Sweepstakes awards seem to have been a matter of routine.

Lobo bands have walked off with first division ratings in concert playing, sight reading and marching. It takes superior performances in all three categories to produce a Sweepstakes winner.

And of course it takes individual musicians who have the ability to more than hold their own in top-flight competition.

Individual winners in Plainview Saturday, previously unannounced, were released by Wheeler Monday. They include:

### Ensembles

Flute quartet — Gracie Wheeler, Marilyn Marcom, Barbara Blair and Gloria Petty, first division.

Brass sextet — Jerry Pickens, Thomas Taylor, Bill Billingsley, Sherril Pounds, Oliver Shirley and Ross Holman, first division.

### Solos

Mariohn Rowe, flute, 2nd division; Jerry Pickens, cornet, 1st; Jimmy Metze, baritone, 2nd; Jimmy Metze, trombone, 1st; Jimmy Vinson, cornet, 2nd; Mike Metze, cornet, 1st; Thomas Taylor, cornet, 1st; Ann Dupre, student conductor 1st; Ann Dupre, student conductor

1st; Jerry Cox, Oboe, 1st.  
Twirlers — George Evelyn Roberts, 2nd; Gleada Miller, 3rd; Sharon Lee, 2nd; Nancy Derington, 1st, Bobbie Reid, 1st.

## Governors Split On Highway Plan

By HERB ALTSCHULL

WASHINGTON (AP) — Administration leaders reported to a pretty well split group of the nation's governors today on what it plans to do about salvaging its big highway program.

The meeting was held behind closed doors.

A briefing was scheduled after the close of the session.

Meanwhile, Gov. Robert F. Kennon of Louisiana, chairman of the governors' conference, said he and his supporters will campaign among members of the House of Representatives to revive the administration's controversial road financing program.

That plan has been scrapped by the Senate Public Roads subcommittee, which instead adopted a "pay-as-you-go" formula proposed by Sen. Gore (D-Tenn).

Some of the governors, notably Averell Harriman of New York and George M. Leader of Pennsylvania, endorsed the Gore formula.

Reporting to the governors were Secretary of the Treasury Humphrey, Gen. Lucius D. Clay, head of President Eisenhower's highway committee; and Francis V. Du-

(Continued on page five)

## Mrs. Lawrence Rowe Sister of Bill White

# Local Woman 'Thrilled, Excited' That Brother Won Pulitzer Prize

"I was so thrilled and excited I could hardly contain myself."

That was Mrs. Lawrence Rowe's reaction to news that her brother, William S. White, 49, had been awarded the Pulitzer prize for his biography of the late Sen. Robert A. Taft, "The Taft Story."

Mrs. Rowe, a Levelland housewife and a former dental assistant, said Tuesday she learned of the award in a telephone conversation with her mother Monday night.

White's mother was in Waco re-

sociated Press. He was also a correspondent for the AP in Houston before going to New York as war editor for the AP, a post he held until 1943 when he asked for assignment overseas and was transferred to London.

After the war, White returned to the US and joined the New York Times, working as a member of the Washington Bureau.

It was here that he came to know the late Sen. Taft and began the association which was to

## Expenditures, Income Down

Members of the city council Monday night approved a \$314,712.50 budget for the city of Levelland for the coming fiscal year, incorporating a \$9,735 wage boost for employes approved two weeks ago.

Even with a wage increase, however, the proposed budget shows a drop in expenditures of \$7,801.75 from the \$322,514.25 spent in the operation of the city's business during 1954.

The city is also counting on a general reduction of income during the next 12 months, with estimates scaled down as City Manager Kenneth Harper put it, just to be "conservative."

The \$314,712.50 listed as anticipated income will come primarily from water sales, with two new city wells now being completed expected to give greater water production capacity than before.

Income from water collections were estimated for 1955 at \$130,000 as compared to \$132,391.38 for last year. Actually, a rainy summer season could reduce water sales, despite increased production facilities.

The next biggest income item is \$45,000 estimated from current tax collections. After this comes garbage collections, \$33,000; then sewer collections, \$32,000.

Other major items include street and alley rentals, \$12,000; fines and fees, \$13,532; parking meter collections, \$11,000; cemetery revenue, \$8,000; swimming pool revenue, \$3,900 and tanning charges, \$3,000.

A transfer to \$10,000 from the city betterment fund is also expected to boost available cash.

The water and sewer department, the biggest source of revenue is expected also to be the biggest expense during the year. Disbursements in this department are estimated for 1955 at \$88,770.

Police protection for the city of Levelland is expected to cost \$47,995 during the coming year.

Other disbursements provided for in the budget include administrative and general, \$31,955; sanitation, \$39,770; street department, \$30,925; fire department, \$18,440; park department, \$10,020; swimming pool, \$4,205; airport, \$600; cemetery, \$8,415; social security, \$2,700; deposit first National Bank, \$28,537; deposit betterment and improvement fund, \$1,500; and interest in Temporary Loans \$73.33.

Approval of the budget was one of only several actions at the council meeting Monday night. The council also:

1. Named the First National Bank as depository for city funds after the bank submitted a bid offering 1 1/4 per cent interest on time deposits and agreed to allow the city to borrow money during the term of the contract at a rate of 1 1/4 per cent.

2. Approved on second reading an ordinance require inspection for all meats sold in the city of Levelland.

3. Named Howard Brown, Bill Simon and Gene Aycock to the city equalization board.

## House Approves 4 Amendments

AUSTIN (AP)—Four proposals to change the Texas Constitution were final passage in the House today and were sent to the Senate.

## Still No Word On Polio Shots

Dr. R. E. Johnson of Brownfield, head of the 5-county South Plains Health Units there, said here Tuesday he still has no information on when Hockley County's first and second graders can be given their second polio shots.

"We have no information about when our clinic can be inasmuch as we haven't had information from the State Health Department ... as to the availability of the vaccine, he said.

Dr. Johnson said, in view of newspaper information he had received, that it appeared unlikely that the second clinic might be held here as early as May 10.

He pointed out, however, that if supplies of the vaccine are received by the end of the week, a clinic could still be held on the 10th.

He said the shots would be given on a Tuesday, "as soon as

# The Sun-News



## Judges Scoring Sheets Accent Band Triumph

Complete result scoring sheets were received Wednesday in the office of the band director, with ratings of "superior" on every tally marked. Most judges added a plus to the division one scoring made by the High School Band here, and one enthusiastic member of the judging panel added extra pluses to underline his appreciation of the performances of the band members and of the capable conducting of the director, W. R. Wheeler.

"I have had scoring sheets that I wasn't so proud of," Wheeler told an interviewer Wednesday, "but I want you to see these."

A very few minor criticisms were pencilled in by judges, but the critics in each case were lavish in their praise of the group and its director.

Bernard Fitzgerald, concert band director at the University of Texas, offered these comments:

"This proves again that results are good when the director is capable. Congratulations for a grand performance."

James Neilson of OCU added pluses all around the figure one which connoted the division in which he rated the performances of the Levelland High School Band. His pencilled note said, "A superior band anywhere."

Roger Fenn of Tulsa University commented after the overture, "All sections are well trained. The director shows a very good understanding and ability. A well taught band." His added note that the band was the best he'd heard that day, was borne out by the final grading of the group.

One judge noted during the performance that the "general effect of the performance is excellent and indicates sound musicianship and good playing habits on the part of the individual players."

"A performance of fine musical taste and judgment. Congratulations on your outstanding achievement—and again congratulations!" his note concluded.

James Kerr, member of the panel from the University of Wichita, forwarded these comments to Wheeler during the band's performance:

"I'm enjoying the band very much—You, the students, school, parents and the town should be congratulated highly—a MOST WONDERFUL job!"

## Director Wheeler With Band 3 Years

W. R. Wheeler began directing the Levelland High School Band three years ago when there were only 15 students in the organization who had ever played before.

From that group of beginners has evolved one of the two finest bands in this region, judging from the reaction of men experienced in the field who rate the local group in Division I all across the board.

Since his graduation from Texas Tech in 1933, Wheeler has been associated with schools in Andrews, Rankin, San Saba, and Freer; from Freer he came to Levelland.

G. C. Clapp, high school principal, relates the story of Wheeler's choice of professions. His original choice of teaching subject was mathematics, according to Clapp, but when, during the war years, band directors were in great demand, Wheeler made the change from mathematics, and aided by his minor in music, found this present field the better for him.

Certainly the implication is that music, and specifically band directing, is his vocation, what with the eminently successful trip to Canyon for the Band Competition Festival.

## Eighty Members Expected In 1950

At least eighty boys and girls are expected to enroll as members of the Levelland High School Band for the school term 1949-50, W. R. Wheeler, band director, revealed in an interview this week.

The increase is attributed to a greater interest in the band program, as well as to an increasingly large school enrollment.

Players will be able to hear how their music really sounds when the high school plant now under construction is completed. Ample provision has been made to accommodate the band in the new building, and acoustical results are expected to be far better. The low ceiling in the present structure utilized by the organization prohibits members' hearing their music at its best.

"When we played in Canyon, there was really a big difference



W. R. Wheeler, director of the Levelland high school band, holds the special plaque "Sweepstakes" award, brought home by a group of sixty-four band members. The award signifies excellence ratings in all three divisions of group competition, and performances of the local band elicited highest praise from the panel of judges.

## Eleven Seniors To Leave Band In May

Eleven graduating seniors will deplete the membership of the high school band, W. R. Wheeler director, said Wednesday.

Most extensive depletion will occur in the trombone section Wheeler said, with the loss there of three of the five players.

Freddie Jackson, Paul Russell, and James Sinclair will leave the organization with their graduation in May. However, Wheeler averred that six trombone players, each with two years' experience, will go into the section, making a total of three more in that group than the band has had this year.

"We'll miss those eleven good players who are leaving the band," Wheeler declared.

Outside the trombone section, these are the students who will be graduated: Peggy Bruner, clarinet; Bobby Garrison, bass; Joy Hamill, clarinet; Don House, cornet; Jerry Johnson, cornet; George Ann McKee, clarinet; Miles Rutherford, baritone; and Earline Shrum, French horn.

in the sound," Wheeler said. "The excellent tonality of the band was reproduced favorably on the stage there, and the students, on hearing the real results of their efforts played even better. It encouraged them," Wheeler pointed out.

## Sweepstakes Award For Class A To Lobo Band

### Other Good Bands But This One Tops

W. R. Wheeler, who has been directing the band organizations here since 1946 has had what he felt were "good bands" before, but never one as good as the band he led to a sweepstakes award in competition at Canyon recently, he told a reporter this week.

"We've really got a band now!" Wheeler declared. He added that the kids were "tickled to death" over the excellence award ratings given them by judges of the festival competition.

Contest lists, published by the Interscholastic League, are sent each school before the festivals, according to the band director. Of this list, bands entering are required to play one of a group of three, selected by the judges, and are allowed to select one number from the remaining seven for presentation.

"We don't go over and over the same pieces from the time we get the lists," Wheeler said, "but we do play them at odd times. Then, "he continued, "just before the competition we thicken the polish on 'em."

"The school plant furnished the larger instruments," Wheeler pointed out, "but most of the kids have their own."

## Strict Judging Is An Added Tribute

In added tribute to the Levelland band organization, the director said that judging in the Band Competition Festival was "very, very strict."

Judges of band performance were James Kerr, University of Wichita; Bernard Fitzgerald director of concert band at the University of Texas and Roger Fenn, Tulsa University.

Individual performance was rated by Robert Maddox, Odessa high school; William Wehrend, Denver City; Pat Arsers, Alamo Heights high school; and Verne Reimer, Fort Stockton.

**Band Members Listed**  
Band members, who competed in both group and individual portions of the festival, were Eugene Moss, Mary Grace Wheeler, Richard Bailey, Lucinda Bertciel, Walter Scott couch, Lonnie Howard, Marvene Landers, George Marcom, Dwight Pounds, Kay Russell,

The Levelland High School Band, directed by W. R. Wheeler, was one of the two organizations out of 43 entrants to win the special plaque "Sweepstakes Award" at a competition held recently in Canyon.

Fourteen band groups were in the Class A division of the festival, as was the Levelland band, but the organizations presented their number one excellence, rating with each school sponsoring them.

No band organization in the AA-1 class qualified for the special award, and only one AA band was rated in the first division for each of the three adjudgements: sight reading, marching, and concert playing. The Plainview band received the "Sweepstakes" designation.

This is the first year the local group has made first division in all portions of the competition, though sight reading was apparently their forte last year when the band scored a first rating.

Wheeler said attention of band members was concentrated on sight reading at the beginning of his association with them, in order to facilitate and expedite their musical agility.

Charles Simon, Jean Star, Bennie Wooten, Gerald Don Abell, Roland Barton, Jimmy Black, Bennie Collins, Charlene Ellison, Donald Gillespie, Mitchell Masters, Jackie Reynolds, Wayne Thompson, Charles Watson, Betty Young, Freddie Low, Bobby Hugill, Ruth King, Barbara Shamberger, Amy Sue Vaughan, Helen Wheeler, Hazel Wheeler.

**More Bandsmen**  
Other boys and girls, also associated with the band, who made the triumphant journey to Canyon, are: Peggy Bruner, Bobby Garrison, Joy Hamill, Don House, Freddie Jackson, Jerry Johnson, George Ann McKee, Miles Rutherford, Paul Russell, Earline Shrum, James Sinclair, David Bates, Clara Jane Cole, Billy Campbell, Edward Davis, Jimmy Dobbs, Homer Hailey, James Heath, Eleanor Lincoln, Bonnie Rutherford, Shannon Rutherford, Mary Stark, Sally Wiley, Bobbie Bates, Wynell Bailey, Willa Faye Breshears, Wallie Gravitt, Edith Morton, Helen Starr, Dona Stephens, Mary Ann Vaughan, Mary Weaver, and Elnora Wright.





1941

1942

## W. R. Wheeler Gets Band Leader Job With Freer Public Schools

Much regret was expressed here this week when it became known that Prof. W. R. Wheeler, who has been our able and efficient school band instructor for the past two and a half years, has accepted the offer of the band director post in the public schools of Freer, Texas. The offer came unsolicited. He took over his duties there Sept. 1st.

Freer schools have an enrollment of some 1200 pupils, about the same as here, we understand, but it is in a rich oil district where the schools have plenty of money. They offered him a salary amounting to much more than he has been receiving here annually. They have a fine band house, splendid equipment, fine uniforms and two school bands. He has no classes to teach except band.

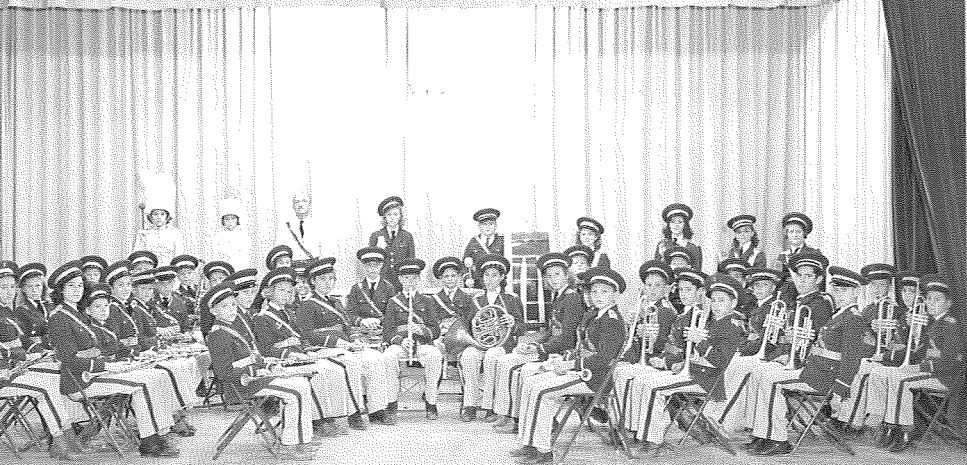
Mr. Wheeler came to the local schools from the Rankin school system in West Texas where he had been for five years. In a comparatively brief time he has developed our junior and senior school bands into outstanding musical organizations, ranking well up with the best in the state. It was largely thru his efforts that the fine uniforms and much of the band instruments, were made possible.

It is therefore with sincere regret that we lose Mr. Wheeler, and his estimable family, from our midst but wish for them continued success and happiness in their new field.



SCHOOL DAYS 1943-'44  
Freer High

F









**THIS GROUP** of students is from Mrs. Birtciel's high school journalism class. They spent the day Monday taking a look at the SPC campus to observe the Journalism department and getting acquainted with Doctor Cooper, Journalism instructor.

## Reese Summer Schedule

SOUTH PLAINS COLLEGE  
DIVISION OF CONTINUING EDUCATION  
REESE AIR FORCE BASE SCHEDULE  
SUMMER, 1974

### FIRST SUMMER TERM

**REGISTRATION:** First Summer Term. Date: Thursday, May 30. Time: 2:00-5:00 p.m.; 6:30-8:30 p.m. Place: Base Education Office, Reese Air Force Base. Late Registration: June 4 and 5 from 5:30-7:00 p.m. in the Academic Building, Reese Air Force Base.

**COST:** 3 Semester Hours-\$40.50; 4 Semester Hours-\$41.50; 6 Semester Hours-\$43.50; 7 Semester Hours-\$47.50.

**ADDITIONAL COSTS: SM**

**ADDITIONAL COSTS:** Mgt. 241-As a ten week course an additional \$12.50 is charged. Bio 142-Lab Fee \$5.00

**MEETING PLACE:** All classes, except Biology, meet in the Academic Building at Reese Air Force Base. The Academic Building is No. 820. Biology will meet in Building No. 91 at Reese Air Force Base.

**LAST DAY TO DROP COURSES WITHOUT GRADE PENALTY:** June 21.

**CLASSES BEGIN:** Tuesday, June 4.

**HOLIDAY:** July 4.

**FINAL EXAMS:** July 8 and 9.

### SECOND SUMMER TERM

**REGISTRATION:** Second Summer Term. Date: Wednesday, July 10. Classes Begin: Thursday, July 11; Final Exams: August 12 and 13; Last Day to Drop Classes Without Grade Penalty: July 24.

**FOR FURTHER INFORMATION:** Contact either the Registrar's Office, South Plains College, Levelland, Texas - 79336, Phone 894-4921, or the Education Office, Reese Air Force Base, Phone 885-4511, Ext. 2634.

## SPC Holds Volleyball Tournament

South Plains College hosted both the I-B and I-A Regional Girls' Volleyball Tournaments on Friday, and Saturday, April 5 and 6.

This brought twelve high school teams into the Women's Gym in addition to many of the player's parents and other team supporters.

Anthony was the winner of the I-B competition by defeating Buena Vista of Imperial in a very exciting championship game. Wink had little or no competition in winning their division beating Jim Ned with scores of 15-1 and 15-4.

Mrs. Shea, Regional Director for the two tournaments, said that she especially wanted to thank the SPC students who worked as officials, scorers, timekeepers, and linesmen. It would be impossible to conduct these tournaments without the aid of the students.

The following students worked: Lydia

# Upchurch Sets School Mark In Austin Meet

By: Johnny Claborn

With track season heading into the final lap, many teams begin to set their sights

## WHEELER From Page 1

Spearman municipal band and later for the Texas Tech and National Guard bands.

His family shares his interest in teaching and music. Brother Marvin Wheeler of Brownfield is a teacher at Union. A sister, Mrs. Mary Frances Rowlette, teaches math at McKenzie Junior High and another sister, Mrs. Lucille Tune, is a private piano teacher, both in Lubbock. A brother, John Wheeler, is in the farm implement business in Lubbock.

Wheeler's father, J.A. Wheeler, a retired Methodist minister, resides at 127 Cactus Drive in Levelland. He is 92.

The Wheelers are the parents of two daughters, Mrs. Helen Sue Grell of Artesia and Mrs. Mary Grace Rogers of Lubbock, and a son, Bill of St. Louis, Mo. They have seven grandchildren.

Wheeler is proud of the fact that his oldest grandchild, Sherry Ann, plans to enroll next fall as a freshman at SPC.

He doesn't have too many definite plans as yet on what he will do after retirement, "probably do some traveling," he said.

But no matter. Those he has touched through his teaching and music will long remember what he has done here.

The Los Tejanos would like to extend their appreciation to Mr. Frank Gonzales and Mr. Robert Guajardo for their support and appreciation in the past year.

Turner, Lori Wilhite, Doris Smart, Vanessa Word, Amy Ledesma, Kena Arthur, Janie Rendon, Donna Brockman, Linda Smyer, Cecilia Neal, Kathy Lane, Paula King, Camille Haberer, Ginger Herrington, and others.

on region meets. Despite adverse weather throughout most of the year, hampering performers' efforts, South Plains, somehow, managed to remain relatively injury free and post some times well within the realm of competition with other schools in Region V. So strong are Texan intentions, Track Coach Clint Ramsey says, "We expect a good run for the meet tible between

Odessa Junior College. New Mexico Junior College, and SPC.

The Region V meet for junior colleges was run Saturday, April 20, in Hobbs, New Mexico.

The Texas Relays were reeled off in Austin two weeks ago, featuring some of the best competition in the nation. Only ten Texans made the trip but of the few who went several team points were collected although no official team standings were tallied in the junior college division.

Cliff Upchurch was a fourth place finisher among shotputters. His effort of 47'7" earned him a personal best of the year and in the time he set a new school

mark. Ironically, was the fact, Upchurch had three tosses; each bettered the school record.

Carl Hutchinson, leaped 6'4" in high jump to record a fourth place finish. In meets past Hutchinson has cleared greater heighbs.

Coach Ramsey praised the effort of sprinter Marvin Baker, who clocked a 9.7 seconds century to give him second place. Baker also was a member of the second place finishing 440 yard team. The four relay team members combined forces climaxed with a time of 41.3 seconds. The best time for four sprinters together, of Baker, Olda Lewis, James Sanders, and James Parker, still stands at 41.2. Coach Ramsey felt some disappointment in his relay team, "We all felt they (the relay team) could or should have won the race."

Tim Givens also turned in a personal best in the 440 yards Intermediate Hurdles. H did not place in the top six but his time of 55.5 seconds placed him in a position of strong contention in the Region V meet two weeks away.

All Region V junior colleges entered the track meet in Austin, with Ranger taking control of the helm. They were the dominant team. Probably their biggest feat of the meet came in the 440 relay. Ranger ripped-off a time of 40.5 to win the event, while setting a new national record in the event. The old record originally stood at 40.6.

South Plains faced virtually the same competitors, as in the Texas Relays, in Hobbs last weekend for the Region V, Western Junior College Conference meet.

## Frazier Hall Retains Lead In Softball

by David Gillis

With intramural softball coming to an end, it looks as though the Frazier Animals will take first place. The Animals were beaten last week by the Vochais, 19-7, but it will not count as the Vochais had a player who had not signed the team roster. Thus, Frazier remains undefeated with a perfect 3-0 record.

In second place is Lamar, who staged a

dramatic comeback to slip past B.S.U., 26-21. Lamar was down 16-15 going into the 6th inning, but exploded for 10 runs to ice the victory. In other action this week, Lamar also massacred Vochais, 33-21. It appears that the Vochais are having a lot t tougher time winning in softball, than when they won the title in basketball.



# Wilburn Wheeler

LEVELLAND (Special) - Services for Wilburn R. Wheeler, 78, of Levelland will be at 2 p.m. today in First United Methodist

Church with the Rev. David H. Robertson, pastor, officiating.

Burial will be in City of Levelland Cemetery under direction of Geo. C. Price Funeral Directors.



Wheeler

He died at 11:25 a.m. Tuesday in South Park Medical Center after a lengthy illness.

He was born in Gilmer and moved to Levelland in 1946. He graduated from Texas Tech University in 1933. He was a member of Phi Beta Mu. He was awarded a distinguished professorship from South Plains College in 1974. He was a retired music instructor at South Plains College. He was a member of First United Methodist Church. He married Helen Whatley on July 7, 1934, in Fort Worth.

Survivors include his wife; a son, Dr. William Ray of Bay Shore, N.Y.; two daughters, Helen L. "Sue" Grell and Mary Grace Rogers, both of Lubbock; his stepmother, Ella Wheeler of Levelland; two brothers, Marvin of Brownfield and John A. of El Paso; two sisters, Lucille Tune and Mary Frances Rowlette, both of Lubbock; nine grandchildren; and four great-grandchildren.

Pallbearers will be Harold Jones, Guy Miles, Paul Rogers, Joel Rogers, Mark Rogers and Jim Blasingame.

The family suggests memorials to the Wilburn R. Wheeler Scholarship Fund at South Plains College or a favorite charity.

4 - 19-1989