

EARL R. RAY

Earl was born in Lyra, Texas (near Mingus) on April 16, 1908. He attended Mingus High School, graduating in May, 1925. Since his parents could not interest his older brother in music, Earl had to do it on his own. He borrowed a violin from an uncle and took lessons to prove to his family that he was serious about music. The violin not only opened a new world for him, it also got him out of a lot of chores such as milking, churning and chopping wood. However, it didn't satisfy him for long. Mingus had a municipal band and Earl decided that would be more fun. He couldn't use his violin, so the director loaned him a baritone and it became the love of his life.

After graduating in 1925, he enrolled in John Tarleton and then a two-year military college. There he continued playing in the band and became an officer. While in school his family moved to Breckenridge and after finishing Tarleton, money was scarce, so he spent a lot of time in the High School band room with Pop Frazier. One day, Pop told him that Monahans was wanting some one to come out and start a band and said that he should take the job. Pop gave Earl a two week crash course on reed instruments and the art of conducting.

On January 1, 1928 he became the first Monahans Band Director. Although they wanted a band, there was no money for salary so he charged each student \$5.00 per month when he could collect. In a short time, he had a 17 piece band that played well enough to enter the West Texas Chamber of Commerce Contest in Fort Worth where they won 2nd place in the six months class. That was in May, 1928.

That fall, Wink hired him to come over where they were organizing a school and start a band there. He got his first regular paycheck, and for one year, he commuted between the two schools, but went full time with Wink in 1929. In the seven years he taught there, his bands won First Place in Class C 3 years (now class A & AA), and First Place in Class B 1 year (now class AAA & AAAA). This was before UIL had a rating system. He then entered his Class C band in Class A (now 5A) and won 1st Division in Alpine, Lubbock and Abilene. While in Wink, he took his band to his first National Contest in Tulsa, Oklahoma. There he met John Philip Sousa who conducted the massed band. This was extra special to Earl because Mr. Sousa died the next year and so he treasured this experience.

In 1935, was the big move to Abilene, Kansas where he took over a 35 piece band and won a First Division his second year there. He continued winning for the next six years, including National Regional Contests in Omaha, Nebraska, Lawrence, Kansas, Topeka, Kansas, Kansas City, Missouri and Colorado Springs, Colorado. He won under such famous judges as William Revelli, Mark Hindsley, A. A. Harding, Harold Bachman, D. O. and Russell Wiley, and Earl D. Irons.

Earl had to continue his education after Tarleton during the summer months. He studied with Joseph DeLuca, an eminent Euphonium soloist with the Sousa Band at the Southwestern Band and Orchestra Conservatory on the SMU Campus. He also attended the University of North Texas, Hardin-Simmons University, Kansas University, Texas Tech University (Bachelor's Degree), and the University of Northern Colorado (Master's Degree). He was also a member of the National Guard Mounted Band out of Camp Walters in Mineral Wells, Texas.

In 1942, Earl accepted the band job at North Dallas High School where he taught for the next four years. The 1946-47 school year he spent as the Coordinator of Instrumental Music in the Highland Park system.

EARL RAY

PLAYER, TEACHER, SUPERVISOR, MUSIC DEALER ARE EACH A PROFESSION AND EARL RAY HAS DONE EACH. HE WAS BORN ON APRIL 16, 1908 AT LYRA, NEAR MINGUS, IN CENTRAL TEXAS. EARL GRADUATED FROM MINGUS HIGH SCHOOL IN 1925. SINCE HIS PARENTS COULD NOT INTEREST HIS OLDER BROTHER IN MUSIC, EARL HAD TO DO IT ON HIS OWN. HE BORROWED A VIOLIN FROM AN UNCLE AND TOOK LESSONS TO PROVE THAT HE WAS SERIOUS ABOUT MUSIC, AND IT GOT HIM OUT OF CHORES SUCH AS MILKING, CHURNING, AND CHOPPING WOOD. BUT SINCE MINGUS HAD A MUNICIPAL BAND, EARL PUT DOWN HIS VIOLIN AND LEARNED TO PLAY BARITONE.

AFTER GRADUATION FROM HIGH SCHOOL, EARL ATTENDED JOHN TARLETON, A TWO YEAR MILITARY SCHOOL. HE CONTINUED PLAYING IN THE BAND AND BECAME AN OFFICER. EARL'S FAMILY MOVED TO BRECKENRIDGE WHILE HE WAS STILL IN SCHOOL. AFTER GRADUATING FROM TARLETON, EARL FOUND OUT THAT MONEY AND JOBS WERE SCARCE, SO HE HEADED FOR BRECKENRIDGE TO LIVE WITH HIS FAMILY UNTIL HE COULD FIND A JOB. POP FRAZIER WAS BAND DIRECTOR AT THE HIGH SCHOOL, AND THAT IS WHERE EARL SPENT MOST OF HIS TIME. ONE DAY POP TOLD HIM THAT MONAHANS WAS WANTING SOMEONE TO COME OUT AND START A BAND AND SAID THAT HE SHOULD TAKE THE JOB. POP GAVE EARL A TWO WEEK CRASH COURSE ON REED INSTRUMENTS AND THE ART OF CONDUCTING.

ON JANUARY 1, 1928 EARL BECAME THE FIRST MONAHANS BAND DIRECTOR. THERE WAS NO MONEY FOR SALARY SO HE CHARGED EACH STUDENT \$5.00 PER MONTH WHEN HE COULD COLLECT. THAT FALL, WINK HIRED HIM TO START THEIR BAND. HE THEN GOT HIS FIRST REGULAR PAYCHECK, AND FOR ONE YEAR HE COMMUTED BETWEEN THE TWO SCHOOLS. IN 1929, EARL CHOSE TO GO FULL TIME AT WINK BECAUSE THE TOWN AND SCHOOL WAS LARGER. DURING THE SEVEN YEARS HE TAUGHT AT WINK, HIS BANDS WON FIRST PLACE IN CLASS C FOR THREE YEARS, AND FIRST PLACE IN CLASS B ONE YEAR. THIS WAS BEFORE U.I.L. HAD A RATING SYSTEM.

THE NEXT BIG MOVE WAS IN 1935 TO ABILENE, KANSAS, WHERE HE TOOK OVER A 35 PIECE BAND AND WON A FIRST DIVISION HIS SECOND YEAR THERE. HIS BANDS CONTINUED THEIR WINNINGS THE NEXT SIX YEARS AT THE NATIONAL REGIONAL CONTESTS IN OMAHA, NEBRASKA, LAWRENCE, KANSAS, TOPEKA, KANSAS, KANSAS CITY, MISSOURI, AND COLORADO SPRINGS, COLORADO.

EARL HAD TO CONTINUE HIS EDUCATION DURING THE SUMMER MONTHS. HE STUDIED WITH JOSEPH DeLUCA, AN EMINANT EUPHONIUM SOLOIST WITH THE SOUSA BAND. HE ALSO ATTENDED THE UNIVERSITY OF NORTH TEXAS, HARDIN-SIMMONS UNIVERSITY, KANSAS UNIVERSITY, AND TEXAS TECH WHERE HE RECEIVED HIS BACHELOR'S DEGREE. HE RECEIVED HIS MASTER'S DEGREE FROM THE UNIVERSITY OF NORTHERN COLORADO. IN 1942, EARL MOVED

TO NORTH DALLAS WHERE HE TAUGHT FOR 4 YEARS. HE SPENT THE 1946-47 SCHOOL YEAR AS THE COORDINATOR OF INSTRUMENTAL MUSIC IN THE HIGHLAND PARK SYSTEM.

EARL JOINED THE BUSINESS WORLD IN 1948 IN LUBBOCK. HE BOUGHT HIS OWN BUSINESS AFTER EIGHT YEARS OF WORKING FOR SOMEONE ELSE, AND HE HAS SOLD INSTRUMENTS AND TAUGHT BAND DIRECTORS UNTIL 1984 WHEN HE RETIRED. HE NOW SERVES AS SPONSOR ON BUS II (2) FOR THE TECH BAND, A POSITION HE AND LAVERNE HAVE HELD FOR 31 YEARS.



Mingus Municipal Italian Band

taken in 1924.

Earl Ray at age 15 (third left
on back row)

Director: Dan Rafaele (left)



EARL'S MARCH

by
Charles A. Wiley

TRN Music Publisher

Program Notes - - - (long version)

Earl's March was composed for and dedicated to **Earl Ray** in the summer of 1980 when Charles A. "Pete" Wiley and his wife, Mary Jane, spent two weeks as guests in the New Mexico mountain vacation home of Earl and LaVerne Ray. The Rays were long-time friends of the Wiley family. **Earl** was a pioneer in the band field in Texas and Kansas. Professional player, music teacher, music supervisor, and music dealer are each a profession in its own right, and **Earl Ray** did each of these in turn. He was born on April 16, 1908 at Lyra, near Mingus, in Central Texas. As a young lad, **Earl** borrowed a violin from an uncle and took lessons. His seriousness about practicing his violin got him out of many farm chores. But since Mingus had no town orchestra--only a municipal band!-- **Earl** put down his violin, learned to play the baritone horn, and joined the band.

After graduation from Mingus High School in 1925, **Earl** attended John Tarleton College, a two year military school. He played in the college band and became an officer. **Earl's** family moved to Breckenridge, Texas, while he was still in school, and **Earl** went to live with his family in Breckenridge until he could find a job. Breckenridge High School had a powerful football team, had plenty of money because of the Breckenridge oil boom, and was one of the few high schools in the state with a band and a band director. The director was Pop Frazier. **Earl** spent all of his waking hours with Mr. Frazier in the high school band hall. One day Mr. Frazier told **Earl** that the West Texas town of Monahans wanted someone to come out and start a band, and told **Earl** that he should take the job. **Earl** took a two week crash course in the teaching of woodwind instruments and the art of conducting, and got the job.

On January 1, 1928, **Earl** became the first Monahans band director. There was no money for salary as a regular teacher at the school, so **Earl** charged each student \$5 per month when he could collect it. That fall a neighboring town, Wink, Texas, hired **Earl** as a part time teacher to start their band, so for the next year Earl commuted between the two schools. In 1929, Earl chose to go full time at Wink because the town and school were larger, no longer true today. During the seven years he taught at Wink, his bands won first place in Class C for three years, and first place in Class B for one year. This was before the University Interscholastic League in Texas was given control of the band contests, and no rating system had yet been developed---just first place. (Both bands have been consistent first division winners to this day, and Monahans was chosen recently as Honor Band in their class and performed at the state convention of the Texas Music Educators Association.)

Earl's next move was in 1935 to Abilene, Kansas, where he took over a 35 piece band and won a first division his second year there. His bands continued their winning ways the next six years at the National Regional Contests in Omaha, Nebraska, Lawrence and Topeka Kansas, Kansas City, Missouri, and Colorado Springs, Colorado.

Earl continued his education during the summer months. He studied with Joseph DeLuca, an eminent euphonium soloist with the Sousa Band. He also attended the University of North Texas, Hardin-Simmons University, Kansas University, and Texas Tech University where he received his Bachelor's degree. He received his Master's degree from the University of Northern Colorado. In 1942, **Earl** moved to North Dallas where he taught for four years. He spent the 1946-7 school year as the Coordinator of Instrumental Music in the famous Highland Park area of Dallas.

Earl joined the business world in 1948 in Lubbock, and after eight years of service with the Adair Music Company, he bought out their band instrument department, and later opened his own store, the **Earl Ray Music Company**. As **Earl** himself put it, "for the next 28 years I sold instruments and taught band directors." He sold his store and retired in 1984, but he and his wife LaVerne still serve as sponsor/chaperones on Bus #2 when the Texas Tech Red Raider Marching Band travels with their eight to ten busses to football games, positions of honor and responsibility they have held since 1960.

Program notes - - - short version)

Earl's March was composed for and dedicated to **Earl Ray** in the summer of 1980 when Charles A. "Pete" Wiley and his wife, Mary Jane, spent two weeks as guests in the New Mexico mountain vacation home of Earl and LaVerne Ray. The Rays were long-time family friends of the Wileys. Each section of the march has a special meaning to its composer. The introduction, with its use of the natural harmonic series, refers to **Earl Ray's** theoretical musicianship. The simple beauty of the melody in the first strain was inspired by **Earl's** quality of kindness. The vigor of the second strain refers to his strength of character. The use in the trio section of a few bars from *Alouette*, a happy children's song from France, alludes to **Earl's** natural sense of humor and youthfulness. **Earl**, born in Mingus, Texas in 1908, was a pioneer band director, starting his teaching career in 1928. He was the founder and first teacher of the bands in Monahans and Wink, Texas. He later taught in Abilene, Kansas and was Supervisor of Music in the famous Highland Park district of Dallas. He was a consistent first division winner with his bands. He entered the business world in 1948, and was owner of **Earl Ray Music Co.**, Lubbock, Texas for many years. **Earl's** life story is very similar to many of the band music store owners and managers of this country. **Earl** and others like him, who have through the years supplied the bands with fine music and instruments, have kept the instruments in good repair, and through their continual personal guidance and counsel, have been a stimulus to many a director, young and old, to continually strive for the highest.

On October 24th at the Tulsa-Tech football game, the Tech Band spelled "EARL", and we were called to the 50 yard line to receive a beautiful plaque. It read:

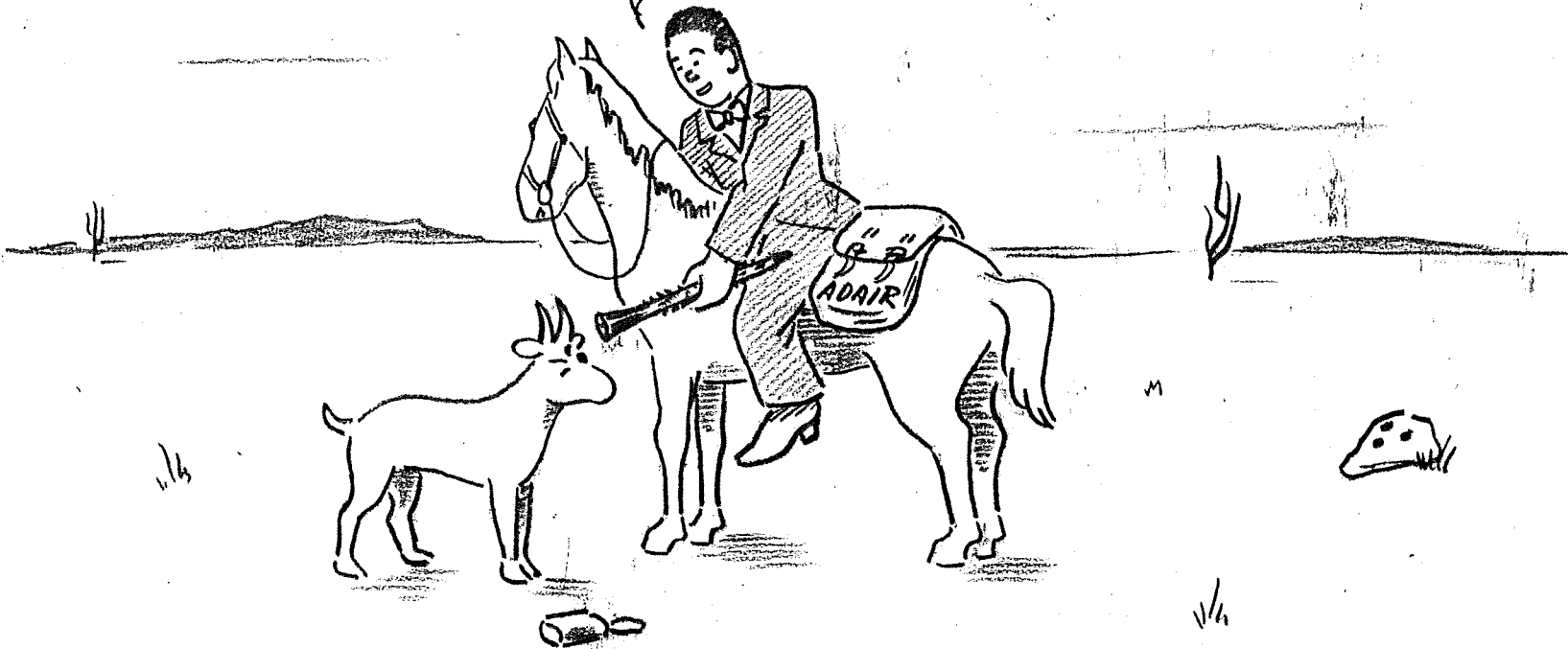
IN APPRECIATION TO
MR. & MRS. EARL RAY
FOR 28 YEARS OF
LOYALTY & SUPPORT TO THE
"GOIN' BAND FROM RAIDERLAND"
WE LOOK FORWARD TO
MANY MORE YEARS.
1987 "Goin' Band From Raiderland"

Believe me, it looks much better on the plaque than I can do on this typewriter. We have made all the out-of-town games with the Band for the last 28 years....even with our back braces after the motor home accident. It has been the high point of our year. We are always on Bus Two, and some of the kids have ridden with us all four years in Tech. It's great to be rewarded for something that we enjoy so much, and doesn't cost any thing.

LaShane Ray



ONLY \$125
COMPLETE WITH CASE!



EARL RAY IN JEFF DAVIS COUNTY

Certificate of Recognition

for

Twenty Years Continuous Membership

Texas Bandmasters' Association

EARL RAY
SAN ANTONIO, TEXAS

PLACE _____

DATE _____

JULY 27, 1971



PRESIDENT



FIRST VICE PRESIDENT



EXECUTIVE SECRETARY

Tau Beta Sigma

Honorary Bond Fraternity



This is to certify that

Earl Ray

is hereby granted an

Honorary Membership

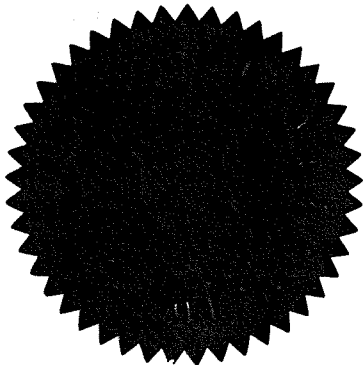
in Tau Beta Sigma

having been initiated into

The Beta Chapter

on

May 3, 1962



Sibyl Ingle Snyder
NATIONAL RESIDENT

John R. R. R.
NATIONAL SECRETARY

A photograph of the Earl Ray Music Co. storefront at night. The building has a dark facade with a large, illuminated sign that reads "EARL RAY MUSIC CO." in a bold, sans-serif font. The sign is set against a textured, diamond-patterned background. Below the sign is a large glass window and a glass entrance door. Through the glass, the interior of the store is visible, showing several upright pianos and other musical instruments. The floor in front of the store is paved with cobblestones. The overall scene is lit by the store's interior lights and the sign's illumination, creating a warm glow against the dark night sky.

EARL RAY MUSIC CO.

New location 1962

1502 Ave. Q

Photocraft
LEVELLAND



EARL RAY *music co.*

1502 Avenue Q Lubbock, Texas

11-3782

IN APPRECIATION

Carl Kay

Is Hereby Made An Honorary Member Of

The Belton High School



BAND

Belton, Texas

Richard Crain
Band Director

The
Texas Technological College Band

presents this Certificate of Appreciation to

Mr. and Mrs. Earl Ray

*for unswerving aid and concern for the welfare and progress of the
Goin' Band from Raiderland.*

Presented May 1, 1965

Dean Killin

Band Director

Joe A. Melcher

President

Colorado State College of Education

The Trustees of Colorado State College of Education, upon the recommendation of the Faculty and by virtue of the authority in them vested, have conferred upon

Carl Robert Ray

who has satisfactorily pursued the studies, passed the examinations, and complied with all the other requirements therefor, the degree of

Master of Arts

with all the rights, privileges, and honors therewith appertaining.

Given at Greeley, Colorado the seventh day of August, in the year of our Lord one thousand nine hundred and forty-two



G. W. Mason

President of the College

H. K. Keifer

President of the Board of Trustees

Wm. C. Young

Secretary of the Board of Trustees

Dr. J. L. Lewis

State Superintendent of Public Instruction

THE TEXAS TECH BANDS

THE TEXAS TECHNOLOGICAL COLLEGE



D. O. WILEY, Director

Nov. 24, 1943

LUBBOCK, TEXAS

Col. Earl R. Ray, Director
North Dallas High School Band
Dallas, Texas

Dear Col. Ray:

Just a line to tell you and your fine band how much we all appreciated your playing for Texas Tech at the Tech-SMU football game last Saturday.

There were a lot of people from Tech on the West side of the field, and it was their unanimous opinion that your Band was the best one at the game! Don't tell the SMU boys that, but they really thought so.

I don't know when I have enjoyed being with a bunch of youngsters as much as I enjoyed being around your band members. They are on the beam all the time, and a fine bunch of kids they are.

Old absent minded professor (that's me) left his overcoat in your closet. Some time before too long, send that to me express collect.

Tell Laverne again that I sure had a fine time staying at your house. Also Bobby Lee and Mrs. Rogers. Guess that kitten will be a big cat the next time I am in Dallas.

Willie is fine. She is having some cabinets made in one of the rooms that has the house all messed up now. It will give us some more room for some more junk, I guess.

Write me a line as you have time.

Sincerely yours,


D.O. Wiley

P.S. Tell your Principal thanks for us, too.

NEW YORK WORLD'S FAIR 1940

INCORPORATED

ADMINISTRATION BUILDING · WORLD'S FAIR · NEW YORK

OFFICE OF THE CHAIRMAN

January 15, 1940

Director of Music
Abilene High School
Abilene, Kansas

Dear Sir:

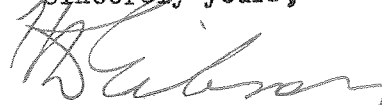
Captain LaBarre, Conductor of the New York City Police Band, has told me of your very excellent High School Band and that he has written you a personal letter with the hope of interesting you in bringing your band to the New York World's Fair in 1940. He has highly recommended your organization as an outstanding concert unit which should be heard at the Fair, and it gives me great pleasure to extend an invitation to your band to play here next summer.

The railroads and transportation companies have made extremely low rates for High School musicians so your trip would be inexpensive. The Fair can bear no expense, however, other than that of admission to the grounds and checking facilities for the band instruments.

We have made many interesting changes in the Fair as to new exhibits, concessions and entertainment features. The original admission price has been lowered and food will be obtainable at moderate prices. Our endeavor is to present a Fair in 1940 that may be enjoyed by all at little cost.

I hope we may have the privilege of scheduling your Band on our Calendar of Events during our 1940 season.

Sincerely yours,



Chairman of the Board

CAPTAIN GENE LABARRE
BANDMASTER, POLICE BAND
CITY OF NEW YORK

January 8, 1940

Director of Music
Abilene High School
Abilene, Kansas

Dear Friend:

I have been told that you have a very fine High School Band. Please accept congratulations from one who has made a lifetime study of band improvement. I can fully appreciate the qualities of a truly fine organization such as yours. The citizens of your community are indeed fortunate in having your concerts to enjoy. It seems a shame, however, that your band may be heard only by those in your vicinity while the whole country is hungry for real good band music.

Can't you arrange to bring your band to the New York World's Fair sometime during the period of May 11 to October 25, 1940? I am sure that your players and the accompanying boosters would get a real thrill out of the trip because the Fair will be well worth visiting next season, owing to many changes being made for the comfort, edification and better accommodation of its patrons.

An extensive musical program to create festive spirit is being formulated and your contribution of some splendid concerts would be greatly appreciated by visitors from all over the world. It would be a "feather in your cap" as well as a great source of pride to the citizens of your town who sponsor the trip.

As a nucleus to this musical program, there will be an official World's Fair Band, second to none in the history of bands. This unique band will be made up of first chair players from the most famous professional musical organizations. Many of the instrumentalists are authors of instruction books widely used in the school instrumental classes. The Musicians' Union of New York City has no objection to School bands playing at the Fair. A World's Fair Certificate of Merit will be awarded to bands giving outstanding performances.

The railroads and bus companies have made attractive low rates for schools, so your trip would not be expensive. I am sure that the Fair Administration would be delighted to invite you, provided there would be no expense to them other than that of free admission for bandmen to the grounds.

Please write me as to the possibility of your coming. I will then pass the word on to the Fair management in order that they may make further arrangements with you as to dates, publicity and other matters requisite to the presentation of your band to the best advantage. Your visit would be an enjoyable one as well as an EVENT long remembered.

I hope to have the pleasure of hearing from you shortly.

Very sincerely yours,



Gene LaBarre

34-20 83rd Street
Jackson Heights, N. Y.

FIRST DIVISION PLAQUES - NATIONAL REGIONAL CONTESTS: MARCHING

Omaha, Neb. 1938, Colorado Springs, Colo. 1939, Kansas City, Mo. 1940, Topeka, Kans. 1941



FIRST DIVISION PLAQUES NATIONAL REGIONAL CONTESTS: CONCERT

Lawrence, Kan. 1937; Omaha, Neb. 1938; Colorado Springs, Colo. 1939;
Kansas City, Mo. 1940; Topeka, Kansas 1941

RECORD TO BOAST OF

New Music Instructor Prominent in Southwest Band Work

Earl R. Ray, who is the new music instructor in the Abilene high school, comes here with a fine musical record. He is a graduate of John Tarleton college at Stephenville, Texas, class of 1925, attended North Texas State Teachers college, Southwestern Band and Orchestra Conservatory in Dallas, and Kansas University.

He served as assistant instructor at Southwestern Band and Orchestra Conservatory, Simmons University and Texas Tech.

He has been a member of the Texas State Band Teachers As-



EARL R. RAY

sociation for eight years, is a former vice president of the association and at present is president of the Western Division of the organization.

The Wink, Texas, high school, where he has been teaching, has won the last seven state band contests, starting in Class C, which was won three years; then competing in Class B and winning it for one year. The following year the group competed in Class A and took first place in three contests. The Wink high school band is considered one of the outstanding bands in the southwest.



Abilene Kansas High School Band 1937

Earl Ray, Director

Bob didn't march in the parade that afternoon, but he was in the contest that night. Notice the water on the street.

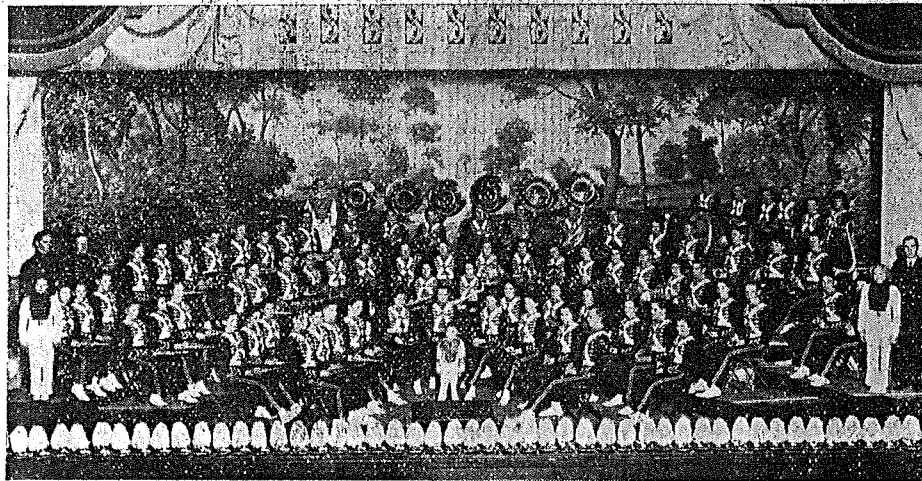
COLORADO SPRINGS GAZETTE—SATURDAY, MAY 13, 1939

ellar Band of the Music Festival

During Friday's rain, the band won a rating of A plus, the only one given by the judges. The organization is shown here marching north on Tejon St., its members decked out in brown style uniforms, trimmed in red, and plumed hats. Abilene rated first division at Lawrence in 1937 and at Omaha in 1938. Director of the outfit is Earl Ray. Below are two other bands that marched Friday afternoon in the parade: Alamosa, Colo., left, and Herndon, Kan.

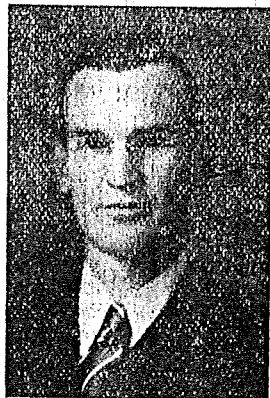


REGIONAL CHAMPIONS FOR THIRD TIME



The Abilene high school band, shown above in complete uniform, won its third national regional championship Friday in competition at Colorado Springs, Colo. Under the direction of Prof. Earl R. Ray, the band won "highly superior" ratings in concert and sight reading Friday afternoon and then went on to receive a "highly superior plus" grade from the judges in parade work during the evening. The band, making the trip to the regional in two chartered buses, will return Saturday evening. A celebration has been planned to welcome them home.

BAND MAESTRO



PROFESSOR EARL R. RAY

director of the high school band, who led his 81-piece organization to its third national regional title Friday.

BUSINESS MANAGER



IVAN ROBERSON

HIGH SCHOOL BAND IS WINNER AT COLORADO SPRINGS CONTEST

Has Highest Ratings in Concert and Parade Work

ITS THIRD TITLE

Bandsmen to Receive Royal Welcome on Return Home

Double honors went to the Abilene high school band Friday as it competed in the National Regional Music contest in Colorado Springs, Colo. Obtaining a "highly superior" rating in the Class B division of concert and sight reading competition during the afternoon program, the band went on to add a "highly superior plus" rating in open competition in pa-

To Arrive at 7:30

The band will arrive home tonight between 7:30 and 8 o'clock, Principal M. W. Van Osdol informed Ivan Roberson, secretary of the Chamber of Commerce this afternoon in a telephone message from Oakley. They reached Oakley at 2:30 p. m.

rade work during the evening. The "plus" rating...

The band, parading in a drizzling rain, received a numerical rating of 97.41—four points better than the second place Limon, Colo., unit. Other scores were:

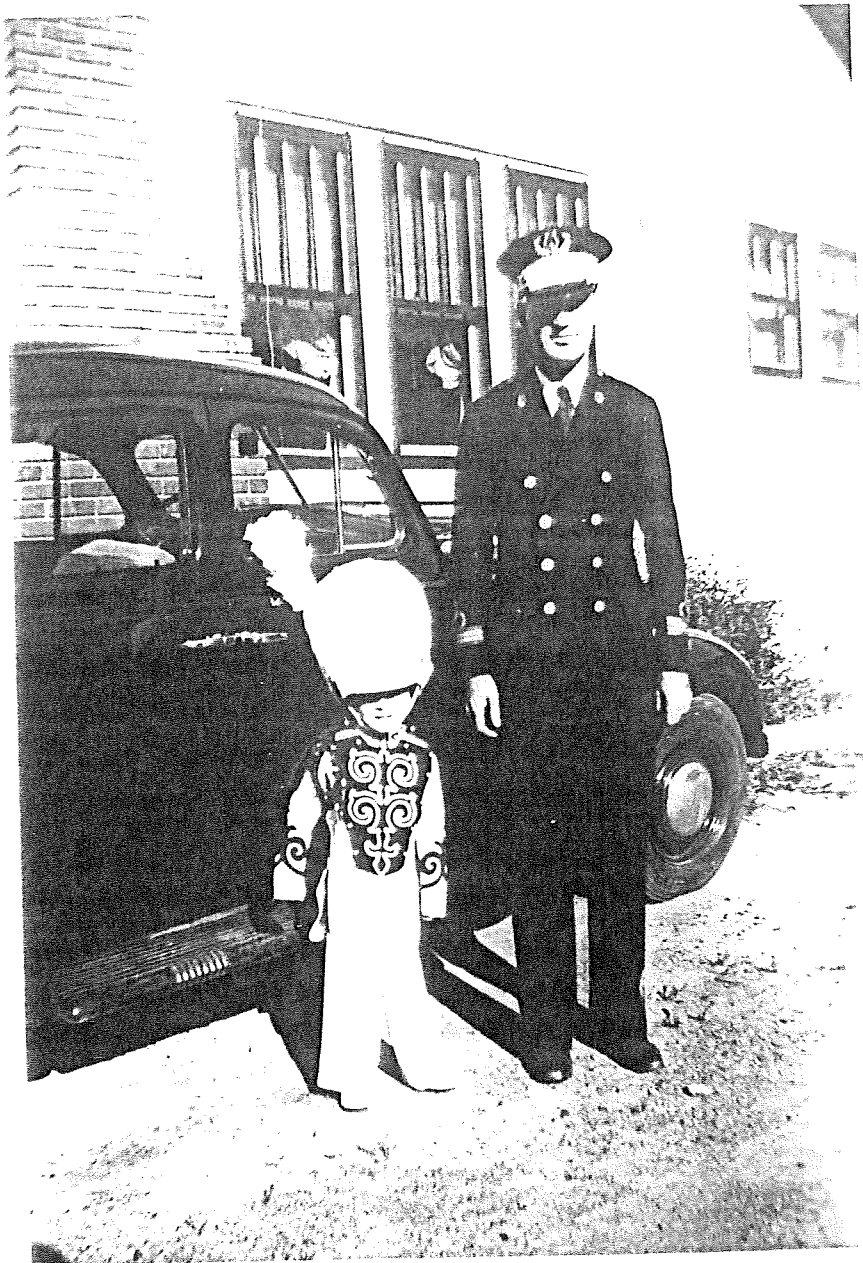
- LaCrosse, Kan.—91.91 B.
- Colorado Springs—90.41 B.
- Canon City, Colo.—89.25 B.
- Goodland, Kan.—88.33 C+
- Alamogordo, Colo.—86.50 C.
- Ellsworth, Kan.—86.08 C.
- Heindon, Kan.—85.75 C.
- Imperial, Neb.—85.25 C.

The "highly superior" rating in concert and sight reading work marked the third consecutive time that the local band has obtained that honor in national regional competition. In 1937 top honors were awarded in the contest held in Lawrence on the Kansas University campus. The band repeated in 1938 with top ratings in the Omaha, Neb., regional.

In all 35 bands from Midwestern and Rocky Mountain states were entered in the contest, although only 10 competed in the parade maneuvers due to the rain.

Prof. Earl R. Ray, the director who has brought national recognition to the band, is completing his third year in the school system here. An 81-piece unit was taken to Colorado Springs under his direction. The bandsmen are uniformed in trim, cadet style, orange and brown outfits.

Plans for the welcoming celebration tonight call for a police escort for the two buses into town with a motor caravan to meet them at the western city.



Earl Ray, Director

Bob Ray, Mascot

Abilene Kansas High School Band 1939

COLORADO SPRINGS HIGH SCHOOL
COLORADO SPRINGS, COLORADO
WILLIAM S. ROE, PRINCIPAL
E. L. ANDERSON, BUSINESS MANAGER

May 16, 1959

Mr. Earl D. Ray
Director of High School Band
Abilene, Kansas

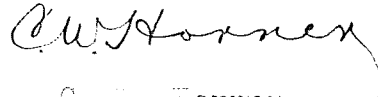
Dear Mr. Ray:

You will remember me as the gentleman who transported you from the City Auditorium to the Chief Theater last Friday afternoon.

I just want to tell you how much I enjoyed the playing of your band on the parade and how thrilled I was at your excellent marching at the Broadmoor Stadium in the evening. Your band can both march and play. You might be interested in the statement of an old friend of mine, an old Annapolis man, who said that he picked your band to win a superior rating and stated that he felt that your outfit had a rhythm and precision that no other outfit had.

We can't tell you how we enjoyed having these groups with us and that we hope that we may have a similar occasion in the not too distant future. We are both disappointed in and apologetic for the brand of weather we displayed.

Very cordially yours,



C. W. Horner
Business Coordinator

Student Secretary
Della McCutchen

NAME DATE FOR ANNUAL CONCERT ABILENE BANDS

High School and Junior High Organizations Present Their Programs in City Building March 5

DOWNEY DIRECTOR

Kansas State Conductor Accepts Invitation to Appear as Guest Leader of the Groups

The annual concert of the Abilene high school and junior high bands will be presented March 5 at the city auditorium with Lyle Downey of Kansas State college at Manhattan as the guest conductor, according to an announcement made last night by Earl R. Ray, local band instructor.

With Downey will be two of his student soloists, Charles Horner, baritone, and Bueford Roper, trumpet. Horner is the son of Mr. and Mrs. Charles Horner of Abilene and will play a modernistic rhythmic pattern entitled, "El Matador," by David Bennett, which is a light and interesting number.

Roper will play "Facilita" by Hartman. These soloists will be accompanied by the high school band with Downey directing.

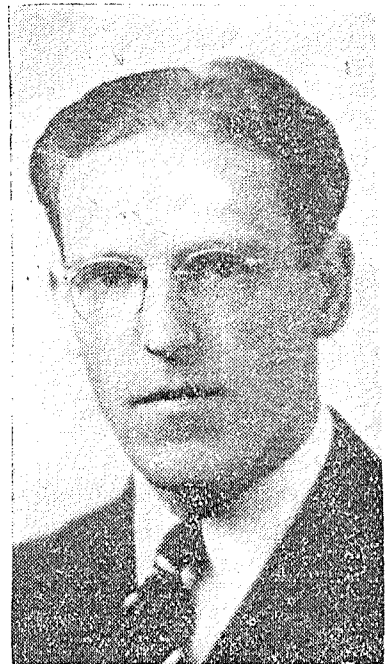
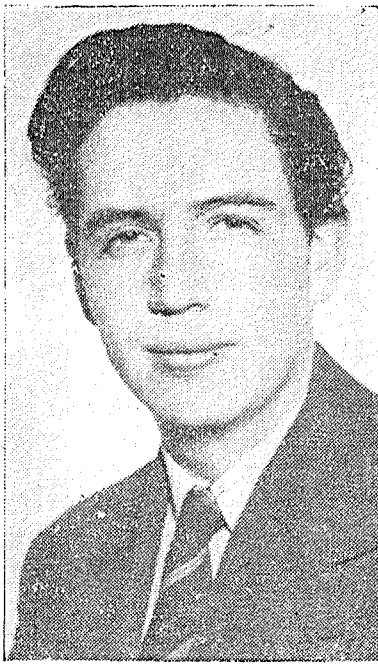
To Play Ten Selections

The concert program will consist of ten numbers including the two solos. The first part of the program will be presented by the 75 piece junior high school organization. Their selections will consist of several marches and one heavy number, "Traveller Overture," by Forest Buchtel.

Several of the highlights of the high school band program will be a brilliant number, "Mars and Venus" from the "Looking Upward Suite" by Sousa, "Manx Overture" by Haydn Wood, which is a Class A band nationally required contest number, "Niobe Overture" by N. De Rubertis, a Kansas City composer, a Class B required contest number.

A light paraphrase, "The World Is Waiting for the Sunrise," by Alfred, a concert number, "Mayfair Cinderella" by Katilbe and a patrol march, "Soldiers on Parade," by Joseph Deluca also will be heard in the evening's entertainment.

It has been the custom of the band in previous years to present an outstanding conductor with each year's concert. Other conductors who have made appearances were Russell Wiley, University of Kansas, George Wilson of Emporia State Teachers college and Colonel Earl Irons of Arlington, Texas.



Center above is Lyle Downey, associate professor of music at Kansas State college in Manhattan, who will be the guest conductor of the Abilene high school bands in their appearance next Tuesday night at the City auditorium. Downey has played professionally with various organizations, including the Chicago Civic Symphony. At Kansas State he has composed a new school marching song, "Roll On Kansas State." Left above is Charles Horner, an Abilene boy, who is a junior at Kansas State in music education. Horner plays first baritone in the Kansas State band, and has chosen a David Bennett number for his appearance here Tuesday. Right above is Bueford Roper of Atchison, a senior music student at Kansas State. He will play a cornet solo in the program here Tuesday.

155 HIGH SCHOOL MUSICIANS WILL GIVE CONCERT

Junior and Senior High Bands to Present Annual Program in Auditorium, March 5

GUEST DIRECTOR

Lyle Downey of Kansas State College Will Conduct the Organizations; Also Guest Soloists

One hundred and fifty-five Abilene high school and junior high school musicians will present their annual concert Tuesday, March 5, in the city auditorium. Lyle Downey, associate professor of music at Kansas State college will be guest conductor.

This annual spring concert by the school bands has come to be an event eagerly anticipated by parents and other townfolk.

Accompanying Downey, will be two of his soloists, Charles Horner and Bueford Roper. Horner is the son of Mr. and Mrs. Charles Horner of Abilene.

The program will include ten numbers, the first three being played by the 75-piece junior high organization, and the remainder by the high school band.

Members of Bands

SCHOOL BANDS REACH CLIMAX OF YEAR TONITE

One Hundred and Fifty-five Students Appear in Annual Concert at City Auditorium

DOWNEY TO DIRECT

Two Kansas State Students To Appear with Conductor as Guest Artists on Program

The musical talent of Abilene's high school and junior high, 155 strong, will be on its good behavior today in preparation for the annual spring concert in the City auditorium tonight.

With Lyle Downey, associate professor of music at Kansas State college in Manhattan here as guest conductor, parents will find their children more reluctant than usual to do their chores today, particularly, if they are to appear in the concert tonight. If Johnny happens to play the bass horn, he won't want to run down to the store after a cake of yeast, preferring to save the capacity of his lungs to toot the big horn tonight.

Girls in the violin section, in order to keep their fingers nimble, won't be kneading any dough for mother, although, if a new dress is in order they may be needing (Editor's note: Our reporter's pun had to be omitted for obvious reasons).

The boys in the cornet and trombone sections surely won't eat any persimmons today; and it's a safe bet that whoever handles the bass fiddle won't carry any wood, saving all the power in his biceps to whang the big strings.

Seriously, this annual concert of the high school and junior high is the big musical event of the year for the schools. In this appearance, the young musicians reach the climax of the school year. Having a guest conductor as famed as Lyle Downey, is in itself a big incentive for a fine performance. But in addition, Kansas State will send two of its better student musicians here for the concert tonight.

One of the visitors is an Abilene boy. He is Charles Horner, who plays first baritone in the Kansas State band. The other is Bueford Roper of Atchison, a senior music student at Kansas State, who will play a cornet solo.

The complete program for tonight follows:

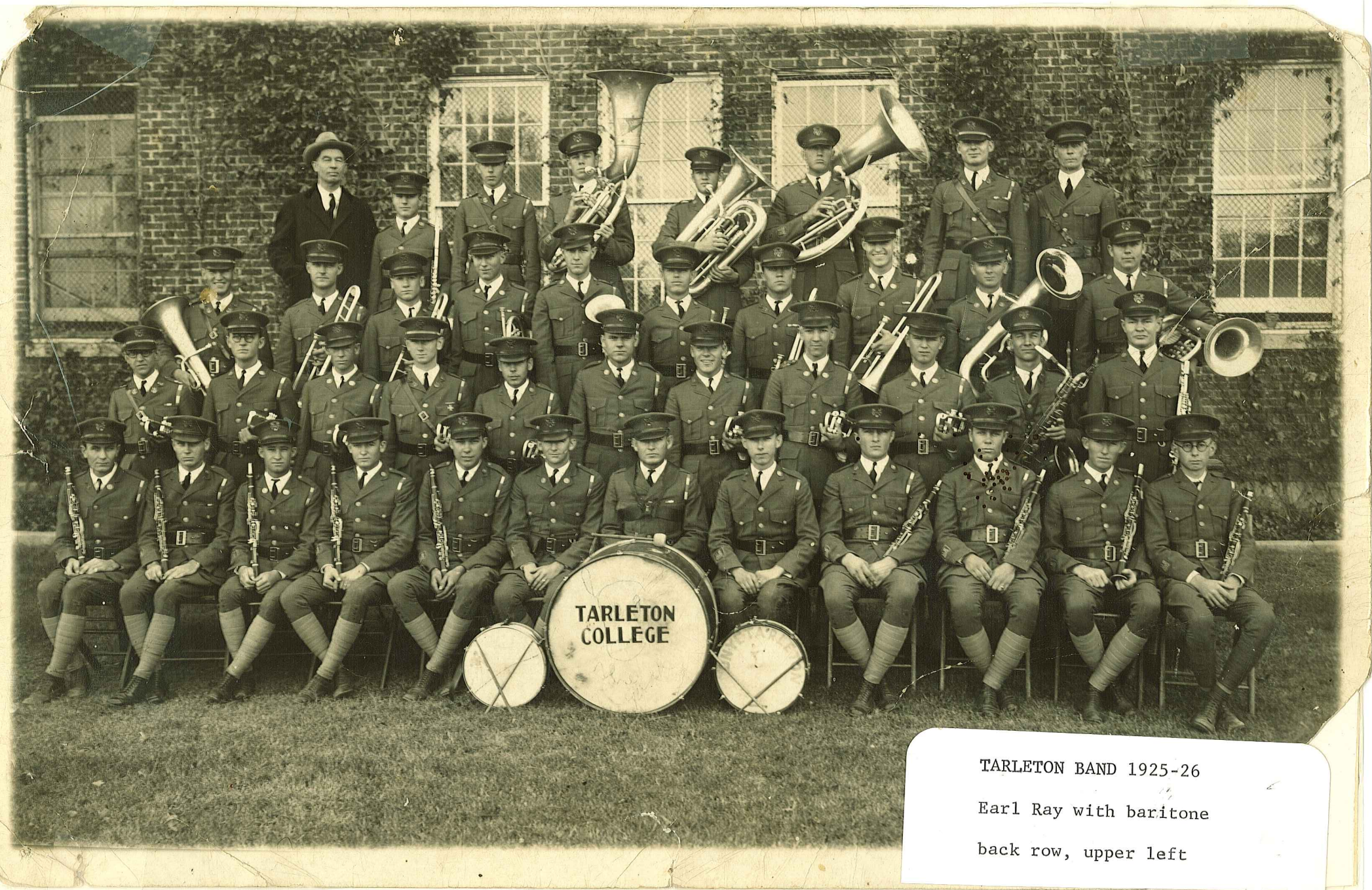
- Part I
- The Comet-March Olivado
- The Traveler, Overture Buchtel
- Loyalty, March Skirmick
- Part II
- Victory and Fame, March
- Holme
- Niobe, Overture N. DeRubertis
- (Class B National Required Number)
- Mars and Venus from "Looking Upward" Suite Sousa
- Baritone Solo, El Matador.....
- Bennet
- Played by Charles Horner
- The World is Waiting for the Sunrise, Paraphrase
- Alford
- Manx, Overture Woo
- (Class A National Required Number)
- A Mayfair Cinderella, Waltz
- Ketelb
- Cornet Solo, Facilita Hartma
- Played by Bueford Roper
- Soldiers on Parade, Patro ...
- DeLuc
- Flanders, March McNich



Wink High School Band 1933-34

Earl Ray Director (Dark Coat)

Major A. E. Lang, Supt (White Coat)



TARLETON BAND 1925-26
Earl Ray with baritone
back row, upper left



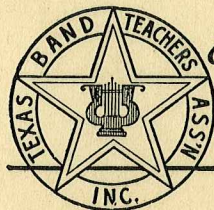
Lt. Earl Ray, 18 while at
Tarleton State University in 1927

In 1927 the school was Jkhn Tarleton
Agricultural College and was a
Military School

Ray
ENVILLE, TEX.

CERTIFICATE of MEMBERSHIP

IN THE



Texas Band Teachers Ass'n., Inc.
More Bands, Better Bands, Larger Bands

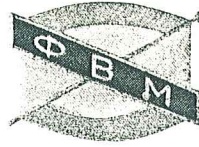
THIS CERTIFIES THAT Earl R. Ray
is a member of the TEXAS BAND TEACHERS ASSOCIATION, Inc., in good standing for the year 1931.

IN WITNESS WHEREOF, the Corporation has caused this Certificate to be signed by its duly authorized officers this 23rd day of January, A. D. 1931.

Ralph W. Beck
Secretary

Richard W. ...
President

MEMBERSHIP



CERTIFICATE

HALL OF FAME

Phi Beta Mu

INTERNATIONAL SCHOOL BANDMASTER FRATERNITY

HONORS
Earl Kay
Alpha

AS A MEMBER OF THE _____ CHAPTER HALL OF FAME

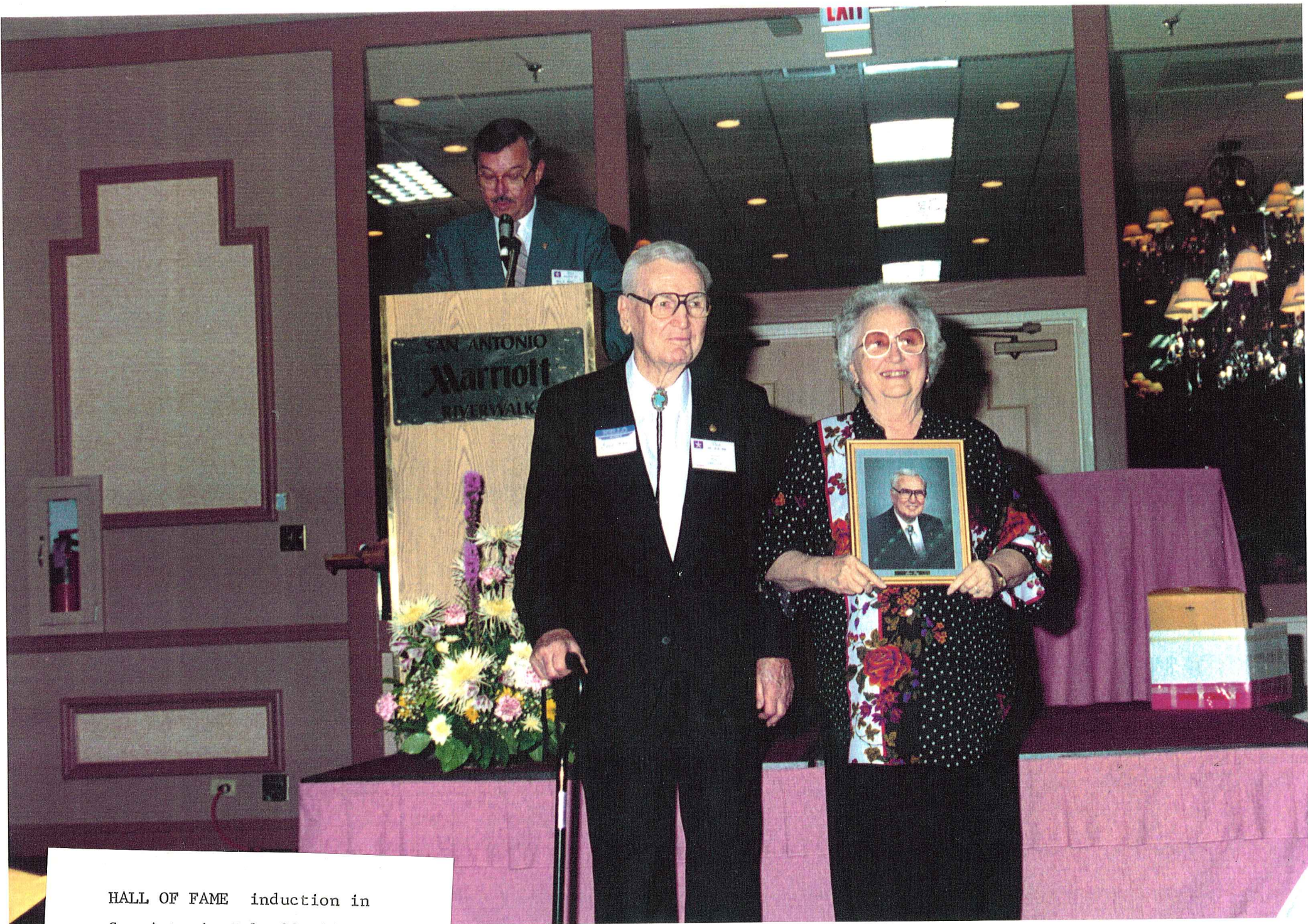
AND IS ENTITLED TO ALL THE RIGHTS AND PRIVILEGES THEREBY CONFERRED



Ray Meza _____
PRESIDENT

Durward Howard _____
SECRETARY

29 July 1991 _____
DATE



HALL OF FAME induction in
San Antonio July 29, 1991



Sunday, March 26, 1995

Earl Ray

Memorial services for Earl R. Ray, 86, of Lubbock will be at 11



Ray

a.m. Monday in Second Baptist Church with the Rev. Charles Foster Johnson, pastor, officiating.

Private burial was under direction of Rix Funeral Directors.

Ray died Friday, March 24, 1995, in Methodist Hospital.

He was born in Mingus. He attended John Tarleton Junior College and graduated from Texas Tech University. He received a master's degree from Northern Colorado University. He was a member of Second Baptist Church, the Lubbock Rotary Club, Texas Music Educators Association, Texas Bandmasters Association, American Bandmasters Association, Phi Beta Mu Hall of Fame and the Yellowhouse Masonic Lodge. He was a 32nd Degree Scottish Rite Mason and a Shriner, and he was a life member of Kappa Kappa Psi and Tau Beta Sigma. He married La Verne Morris on Sept. 18, 1931, in Carlsbad, N.M.

He was a band director at Monahans, Wink, Abilene, Kan., and North Dallas High School. He was coordinator of music at Highland Park, and he managed the band department of Adair Music Co. He operated Earl Ray Music Co. for 39 years, retiring in 1984.

Survivors include his wife; a son, Bob L. Ray of Lubbock; a brother, Cap. Prentice Ray of Alexandria, Va.; and two granddaughters.

Pallbearers will be Dean Killion, Bill Woods, Lee Boyd Montgomery, Dick Whitten, Keith Bearden, C. Doyle Gammill and O.T. Ryan.

The family will receive friends at the funeral home from 6:30 p.m. to 8:30 p.m. today.

The family suggests memorials to the Texas Tech Band Scholarship Fund.

*The Senate of
The State of Texas*

FLORENCE SHAPIRO
District 8

P.O. Box 12068
Austin, Texas 78711

RODNEY ELLIS
District 13



August 16, 2006

Mr. Frank G. Coachman, Jr., Deputy Director
Texas Music Educators Association
PO Box 140465
Austin, TX 78714-0465

Dear Mr. Coachman:

While the two of us come from different areas of the state, different backgrounds and different political parties, there is one issue that transcends geography, demographics and politics, where we see eye to eye – education. We hope you agree, and invite you to become involved with the TEXAS Grant Program.

As business men and women, you understand that having better educated Texans will do more for the economic and social future of our state than perhaps any other single factor. Consider this – people with at least some post-secondary education earn more money to support their families and invest in their communities. They also pay their share of taxes, but use less in government services, contribute more to charitable causes, and stay more involved in civic events. **Every segment of Texas – including your organization – benefits from a better educated society.**

Unfortunately, Texas is falling behind other large states in the number of students attending and graduating from college. We need more than 600,000 new students in our institutions of higher education by 2015 just to catch up with other states.

But, many of these new students will need financial help. They will come from lower income families, some of whom will likely be the first in their families to attend college. Even for middle income families, scholarships and grants can make a big difference in their ability to send their children to college. Even with student loans, the prospect of finishing college deeply in debt is daunting. It is a challenge we are committed to meeting, and we hope you are too.

That's where our state's TEXAS Grant program comes into play. It was designed to help by giving qualified students a grant to cover basic tuition and fees. *It is not something for nothing.* Students are expected to take college preparatory courses in high school and to continue to make academic progress in college. The state has made a strong commitment to TEXAS Grant, providing over \$330 million in the last legislative session and helping over 65,000 students get into college since the program's inception in 1999.

Here's how you can help. In the 2005 legislative session, the law was changed to allow the Texas Higher Education Coordinating Board to solicit private contributions to TEXAS Grant. Almost before

the ink was dry on this legislation, one of your fellow associations – the Texas Retailers Association and its 1,500 members – stepped forward to make the first private grant through their foundation.

This year the Texas Retailers Education Foundation (TREF) made an incredibly generous gift of \$500,000 gift to TEXAS Grants that resulted in almost 400 students receiving timely, critical aid to complete their degree or certificate programs. These new graduates will soon enter the workforce and begin making positive contributions to their families, companies, communities, and our state. *Your organization can have this same kind of direct impact.*

We all tout the importance of an educated workforce, and here's the chance to put your money where your mouth is. The TEXAS Grant program is an excellent example of how private industry should and can invest in our state's future most directly – through the education of our children. We have always been strong proponents of the public-private partnership, and this is just the opportunity for such an alliance to be formed.

We invite you to join with TREF and the State of Texas in creating a better future for all Texans. Your organization already does so much to make our state a great place to live, work and raise a family, and we know you will want to take advantage of this opportunity to do even more.

We urge you to consider a gift to TEXAS Grant. By doing so you not only invest in the future of Texas, you also invest in the future of individuals who will know that your organization supported them at a critical time in their lives.

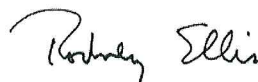
Your gift can be earmarked for specific institutions or certain parts of the state. **You will have the ultimate say. But please say “yes!”** We will help you work out the details.

Please contact the Texas Higher Education Coordinating Board about your interest in contributing to TEXAS Grant Program. The contact information is below, and we look forward to hearing from you.

Sincerely,



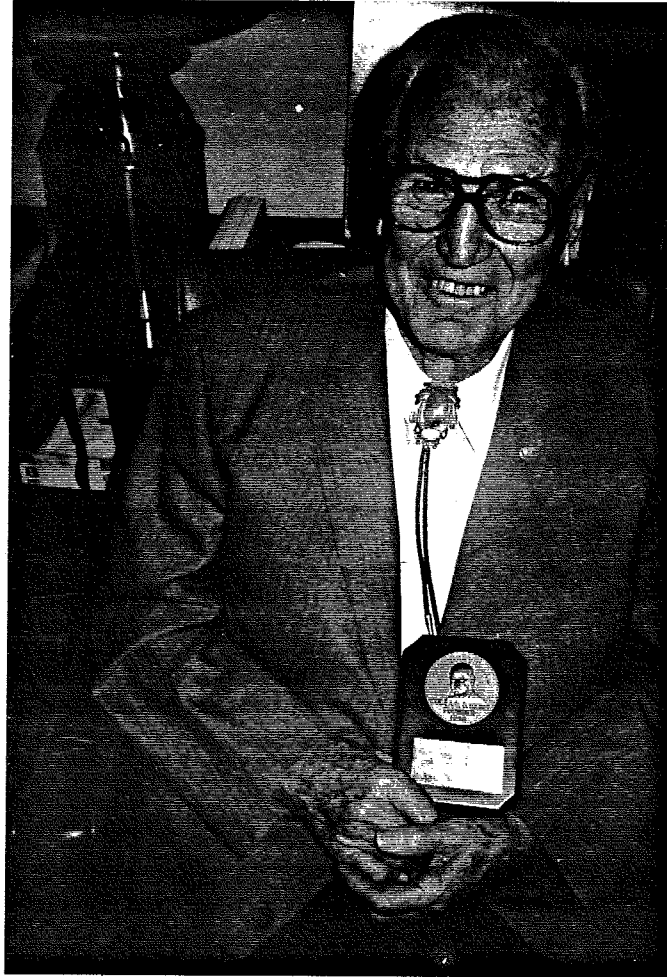
Florence Shapiro
Texas State Senator



Rodney Ellis
Texas State Senator

Texas Higher Education Coordinating Board
Office of Strategic Alliances
P.O. Box 12788
Austin, Texas 78711

Mark Zafereo, Assistant Director
Corporate, Institutional and Federal Relations
512.427.6162
mark.zafereo@theccb.state.tx.us



EARL R. RAY

COL. IRONS HERE FOR SCHOOL BAND CONCERT FRIDAY

Prominent Texas Director and Wayne Snodgrass of Clay Center High to Be Guest Conductors

A 'LIGHT' PROGRAM

New Novelty Numbers Will Be Features of Program Announced by Prof. Earl Ray

Colonel Earl D. Irons of Wellington, Texas, one of the foremost band directors of the Southwest, and Wayne Snodgrass, director of the Clay Center high school band, will be guest conductors of the Abilene high school eighty-piece band when it presents its annual spring concert Friday evening on the city auditorium stage beginning at 8 o'clock.

Colonel Irons, who was one of the guest conductors of the band during its rehearsals last summer, will stop in Abilene enroute home from the convention of the American Band Masters' association in Ft. Dodge, Iowa.

The program will be of the light, novelty type, built around new tunes like "Three Blind Mice," "Uncle Tom's Cabin" and "Trombone Antics," in place of the usual three or four overtures, according to Professor Earl R. Ray, director of the band, who announced the program yesterday. The number, "Uncle Tom's Cabin," is on the order of the well-known "Three Trees" and should prove very entertaining. Tom Harris will be the reader.

The grand finale of the concert will come when the high school organization is augmented by the Junior high school band on the stage for the last two numbers.

The complete program, as announced by Director Ray, is as follows:

- March, "Mon Ami" O'Neill
- Elsa's Procession to the Cathedral from "Lohengrin" Wagner
- Popular, "Deep Purple" DeRose
- March, "Miami" Fillmore
- Clarinet Trio Novelty, "Three Blind Mice"
- Kenneth Nicolay, Harlow McCosli, Kenneth Chapman
- March, "National Victors" Ollvadoti
- Directed by Mrs. Snodgrass
- Vocal Solo, "Invictus" Huhn
- Henry Wise
- Concert March, "Manitou Heights" Christiansen
- Popular, "Star Dust" Hoagy Carmichael
- Radio Movie, "Uncle Tom's Cabin" Alford
- Tom Harris, Speaker
- "Jolly Robbers Overture" Suppe
- (Class B National required number)
- Directed by Col Irons
- "March Yam" Irons
- Directed by Col. Irons
- Novelty, "Trombone Antics" Weber
- Junior and Senior High School Band
- "Headway March" Bennett
- Junior and Senior High School Band

GUEST CONDUCTOR



COL. EARL D. IRONS

TO DIRECT BAND

Colonel Irons, Outstanding Texas Bandman, Here This Week

Col Earl D. Irons, one of the outstanding band men of the southwest, is to begin work tomorrow morning as guest director at the summer session band school, a vacation school being conducted at the local high school by Prof. Earl Ray. Colonel Irons will direct the senior high school group each morning this week from 10 until 12 o'clock.

Colonel Irons, director of the North Texas Agricultural college band at Arlington, Texas, is one of the best known band men in this section of the country. He is a past president of the Texas Band Teachers association and a member of the American Bandmasters Association.

He has gained much recognition as a judge of music events, having served as critic-judge at the Tri-State Festival in Enid, Okla., for the past five years and as judge of the Florida State Festival at Tampa. This spring he was judge at the National Regional contest in Abilene, Texas, an event that drew entries from Oklahoma, New Mexico and Texas.

After leaving Abilene next week he is to go to Lubbock, Texas, where he will be guest conductor at the Texas Tech. Band school.

Those interested are invited to visit the school at any time, Mr. Ray said last night.



EARL R. RAY

RECORD TO BOAST OF

New Music Instructor Prominent in Southwest Band Work

Earl R. Ray, who is the new music instructor in the Abilene high school, comes here with a fine musical record. He is a graduate of John Tarleton college at Stephenville, Texas, class of 1925, attended North Texas State Teachers college, Southwestern Band and Orchestra Conservatory in Dallas, and Kansas University.

He served as assistant instructor at Southwestern Band and Orchestra Conservatory, Simmons University and Texas Tech.

He has been a member of the Texas State Band Teachers Association for eight years, is a former vice president of the association and at present is president of the Western Division of the organization.

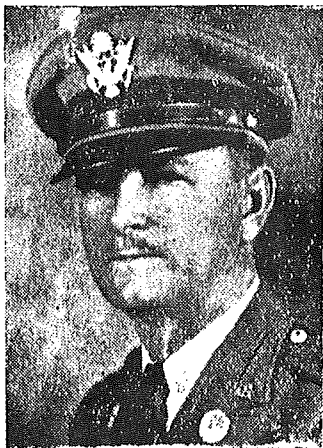
The Wink, Texas, high school, where he has been teaching, has won the last seven state band contests, starting in Class C, which was won three years; then competing in Class B and winning it for one year. The following year the group competed in Class A and took first place in three contests. The Wink high school band is considered one of the outstanding bands in the southwest.



The A. H. S. Band practically vaulted over Pike's Peak. In fact, they brought home everything except the rain. Bless their hearts! they worked so long and so hard to enter this contest in perfect condition. But their work was not in vain. Prof. Earl Ray can never know the true appreciation of the school and the city of Abilene for his splendid work with these band youngsters. Principal Van Osdol observes a great of praise for his generalship in caring for so many youngsters, and the fine and intelligent management of every detail of travel. It is difficult for most parents to travel with only their own family to look after. Imagine a family of 90 and hundreds of pieces of luggage—as well as 90 people to feed three times a day—and with mountain appetites.

If we were only capable of expressing the many tributes paid to Mr. Ray, Mr. Van Osdol and his splendid staff of chaperones—we would write all night.

The morale of the trip, we believe was: Look your best, Play your best, Act like Ladies and Gentlemen, and all the while see everything along the way. And they did — They not only saw but they conquered.



COLONEL EARL D. IRONS



CHARLES S. ESKRIDGE



As far as the more than 3,000 fans were concerned, however, the night show was stolen by two class B Kansas organizations — Abilene and Ellis, and a Nebraska school, Alliance, Abilene, which won the parade competition in the afternoon, strutted its way to a "1 plus" rating in band marching, only "plus" rating awarded in competition during the festival. Ellis, close behind with a "1," was credited with putting on the finest show of the entire program. The blue-and-white-clad Alliance band, last B group to march, won itself a rating of 1.

One official explained the plus rating given Abilene by pointing out that this band kept its music up to concert standard while executing the required movements—and more—flawlessly. Since the association's ratings define "1" as "highly superior," spectators were left to supply their own adjectives for Abilene's 1-plus.

SUMMER SCHOOL FOR BAND PUPILS TO OPEN MAY 23

Colonel Earl D. Irons and Charles S. Eskridge of Texas to Assist With the Teaching

FOR FIVE WEEKS

Students in Third Annual School Will Be Divided Into Three Classes, Mr. Ray Says

Colonel Earl D. Irons and Charles S. Eskridge, both of Texas, will be the guest conductors at the third annual summer band school at the high school band room beginning May 23, it was announced by Earl Ray, director of the school, yesterday. The school will be held over a period of five weeks.

Colonel Irons, who is director of the North Texas Agricultural College band, will teach during the fourth week and Mr. Eskridge, chairman of the sixth National Regional Competition Festival of Oklahoma, Texas and New Mexico and president of the West Texas Band and Orchestra Teachers' association, will teach during the second. The first, third and fifth weeks, Professor Ray will do the teaching.

According to present plans, the school will be divided into three divisions. The more advanced students, members of the high school band, will compose one group, intermediate pupils will be in the second division, and beginners in the third class. All classes will be held in the mornings.

There will be a tuition of \$5.00 which will be charged to cover all costs of the school.

Mr. Ray stated that beginners will be welcome and are urged to attend.

A. H. S. BAND RECEIVES ITS THIRD TOP RATING

Abilene High School Musicians Receive 'Highly Superior' at Colorado Springs Festival

WILL BE FETED ON ARRIVAL TONIGHT

With Previous Victories at Lawrence and Omaha, A. H. S. Breaks Record for Regional Honors

The Abilene High school band, an 80-piece organization performing under the baton of Earl R. Ray, yesterday became the first high school band ever to receive three consecutive "highly superior" ratings in national competition when it was awarded the top ranking at the National Regional Music festival in Colorado Springs. The Abilene group received the rating for both its concert and sight-reading performances.

As the band played yesterday, it was in competition with twenty-three other Class B bands of the Middle West, representing Kansas, Colorado, Missouri, Nebraska and Oklahoma.

The string of honors began in 1937, when the organization was awarded a "highly superior" in the Regional event held on the University of Kansas campus at Lawrence. Last year, the feat was duplicated in the same festival, staged then in Omaha. The winning of a "highly superior" in the Regional, is the highest possible honor a high school band can attain in the United States.

THREE-TIME WINNER



PROF. EARL RAY

To duly honor the musicians who compose the band, the local Chamber of Commerce, in cooperation with the local townspeople, is planning an elaborate

"homecoming" celebration for this evening at about 7:30 o'clock, the time the busses are expected to arrive from Colorado.

According to plans drawn up last evening, a procession of automobiles will meet the busses at the west city limits and escort them into the city. With the block on Third between Cedar and Mulberry streets, barricaded to traffic, the busses will be parked in front of radio station KFBI and the musicians unloaded. The proceedings will be broadcast by a special wire stretched to the street from the station. Staff announcers will conduct short interviews with Director Ray and several of his musicians. Also helping in the celebration, will be the Abilene city band, directed by Harold J. Royer.

BANDS PARADE DESPITE RAIN; ABILENE, KAN., RATES A-PLUS FOR FIRST; LIMON IS SECOND

Stepping high, scornful of the drizzling rain which threatened to wilt their white shakos and spot their trim brown cadet uniforms, members of the Abilene, Kan., high school band marched their way into the parade championship of the national school music competition festival Friday afternoon.

Abilene's band, a class B organization, achieved the phenomenal rating of A plus, with a numerical score of 97.41—four points better than the second place score achieved by Limon, Colo., a class C unit.

Altho not officially a part of the festival program, the parade was the big show of the three-day meet-

ing for Colorado Springs folk, and a crowd estimated at 15,000 persons lined Tejon St. for more than seven blocks to watch the marching youngsters.

There was no noisier group of musicians in Colorado Springs Friday night than the Abilene, Kan., band members, who were cheering and yelling to the world at large over the high rating received in the parade. The Abilene youngsters, far and away the snappiest group to march, didn't miss perfection very far with their 97.41 per cent rating. Earl Ray is director of the Abilene band.

Best Marchers, Too

In a telephone conversation early this morning, Director Earl Ray, stated that the Abilene band had received a "highly superior, plus," rating in the marching contest held last evening. It was the only "plus" rating given during the entire contest. Ellis, Kans., and Alliance, Neb., bands received "highly superiors" in the marching event. Director Ray also stated that it had been raining most of the day in Colorado Springs.